



# Submittal Package

---

## Uninsulated Finishes (UF)

*Project:*

*Location:*

*Architect:*

*General Contractor:*

*Applicator:*

### *Benefits of Master Wall*

- American owned and privately managed, our focus is the customer
- 20+ year track record, projects from coast to coast
- Quality products featuring 100% pure acrylic polymers
- Dedicated to the EIFS & Stucco Markets, it's **what** we do, not part of what our company does
- Experienced Staff—100+ years of experience
- Service—we provide it!
  - Job site visits
  - Color matching
  - Architectural Support
  - Samples
  - Plan, detail and technical reviews
- Dedicated to a culture of excellence

More Information



Uninsulated Finish System

### *Submittal Information:*

- *System Data Sheets*
- *Product Data Sheets*
- *Specifications*
- *Details*
- *Sample Labor/Material Limited Warranty*

Manufactured by



P. O. Box 397  
Fortson, GA 31808  
800-755-0825  
Technical 800-760-2861  
[www.masterwall.com](http://www.masterwall.com)



09 96 63

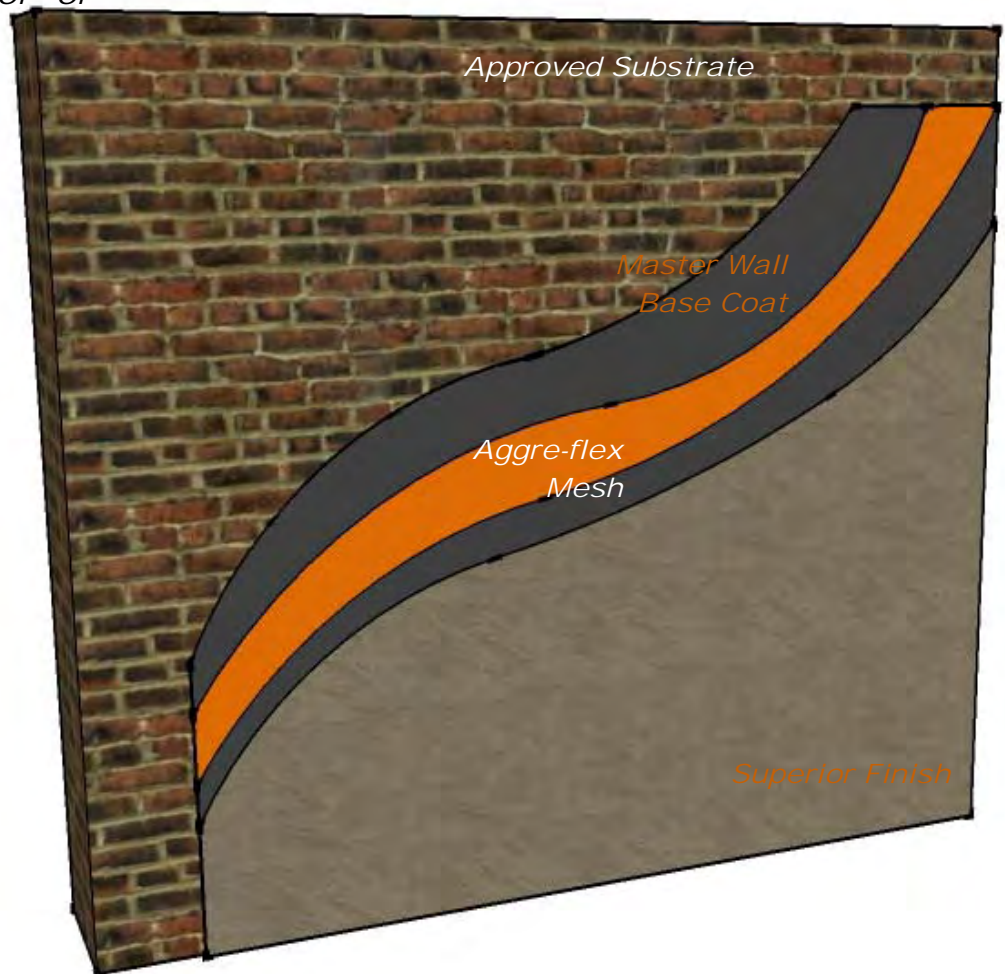
# Uninsulated Finishes

Direct Applied Finish System

*Uninsulated finish systems are one of the easiest ways of improving the look of bare concrete, concrete block stucco or brick. A Master Wall leveling base coat, optional mesh and Superior Finish complete the application. Standard Mesh may help bridge minor cracking and help with leveling.*

## Features & Benefits

- *Easily Applied*
- *Suitable for Interior or Exterior*
- *Class A Fire Rating*



©2011 Master Wall Inc.

P. O. Box 397  
Fortson, GA 31808  
800-755-0825  
Technical 800-760-2861  
masterwall.com

050111

### 1.0 General

This is a short form specification. Refer to Uninsulated Finish specifications and details for additional information.

#### 1.1 System Description

The Master Wall Uninsulated Finish System consists of a leveling base coat, optional reinforcing mesh and a textured finish.

#### 1.2 Design Requirements:

- A. Reference architectural drawings for specific detail requirements.
- B. Slope all surfaces a minimum of 1:2 (6" in 12") to shed water, maximum 12" (305mm) wide.
- C. Maximum deflection of substrates shall not exceed L/360.
- D. Typical acceptable substrates include unpainted brick, masonry, concrete and Portland cement plaster (stucco). Contact Master Wall for other approved substrates.
- E. Expansion joints are required at building expansion joints, panel joints and other areas where significant movement occurs.

#### 1.3 Quality Assurance

- A. The coatings shall be tested for: Accelerated weathering, mildew resistance, salt spray resistance and structural performance.
- B. The coatings shall have been tested for fire performance in accordance with ASTM E-84.

#### 1.4 Job Conditions

- A. Store all materials protected from weather and direct sunlight at temperatures above 40°F (5°C).
- B. The ambient and wall temperature shall be a minimum of 40°F (5°C) and shall remain so for at least 24 hours after installation.

### 2.0 Products

All components of the Uninsulated Finish System shall be manufactured by Master Wall and supplied by an authorized distributor.

#### A. Master Wall Base Coats:

- 1. *F&M Plus*: A high-build 100% pure acrylic-based fiber reinforced adhesive that is field mixed with Portland cement.
- 2. *Foam & Mesh Adhesive (F&M)*: A 100% pure acrylic-based adhesive that is field mixed with Portland cement.
- 3. *Master Wall Bagged Base (MBB) or MBB Plus*: A ready to use dry base that is field mixed with water.

#### B. *Aggre-flex Mesh* (optional): Standard Mesh.

#### C. *Superior Finish*: 100% pure acrylic formulation with integral color and texture. Perfect, Spray, Desert Sand, R-Coarse and Refinish textures.

#### D. Master Wall Coatings:

- 1. *Primecoat*: A water-based primer.
- 2. *Sanded Primecoat*: Sanded water-based primer.
- 3. *Roller-flex*: A water-based architectural finish coating.

### 3.0 Installation

- A. Inspect the substrate to ensure that it is free of all foreign materials that would affect the adhesion of the Uninsulated Finish System.
- B. Apply the products in strict accordance with Master Wall specifications, product data sheets, architectural drawings and architectural specifications.

See full specifications and  
details at [masterwall.com](http://masterwall.com)

# SUPERIOR *finishes*

*Integrally Colored Textured Acrylic Finishes*



*Perfect Texture*



*Spray Texture*



*Desert Sand Texture*



*R-Coarse Texture*



*Refinish Texture*



**M Master Wall Inc.**  
*Building a Culture of Excellence*



*Superior Finish is Master Wall's textured finish line. Available in standard or custom colors, Superior Finishes may be applied over Master Wall Base Coats or prepared substrates including brick, masonry, concrete and stucco. Superior Finishes work great for interior applications as well. Superior Finish is available in five-gallon (19L) pails and is typically troweled onto the wall surface with a stainless steel trowel.*

### **Estimated Coverage**

Perfect: 120-150 sf/pail (11-14 sm)  
 Spray SS: 215-225 sf/pail (20-21 sm)  
 Desert Sand SS: 130-150 sf/pail (12-14 sm)  
 R-Coarse: 90-120 sf/pail (8.4-11 sm)  
 Perfect West: 140-160 sf/pail (13-15 sm)  
 Refinish: Varies with Texture

Coverage will vary by application, applicator skill and substrate conditions. Master Wall assumes no responsibility nor liability for coverage.

### **Finish Properties**

Meets or Exceeds:  
 ASTM E84 Surface Burning  
 ASTM E108 Flame Spread  
 ASTM C67 Freeze/Thaw  
 ASTM E2485/2570 Freeze/Thaw  
 ASTM D2247/E2570 Humidity  
 ASTM D3273 Mold/Mildew  
 ASTM D968 Abrasion  
 ASTM B117 Salt Spray  
 ASTM G53 Weathering  
 ASTM G23/G154/G155 Weathering

### **Approved Substrates**

Master Wall Base Coats  
 Stucco  
 Prepared & Base Coated Surfaces of:  
 Brick  
 Concrete  
 Masonry  
 Others approved in writing

### **Statistics**

Pail Weight: 70 lbs (32 kg), Refinish 65 lbs (29.5 kg)

Working Time: 1/4 hour @ room temperature

Drying Time: 8-12 hours to set, 48-72 hours to dry @ room temperature. High pigment levels, low temperatures, high humidity extend dry times.

Application Range: 40°-110°F (5°-43°C)

Shelf Life: 2 years

### **Application Procedure**

**Job Conditions** - Air and substrate temperature for application of *Superior Finishes* must be 40°F (5°C) or higher and must remain 40°F (5°C) or higher for a minimum of 24 hours. Provide temporary protection to protect the wall system from damage until permanent flashings, caps and sealants are installed. Store materials within prescribed temperature limits and out of direct sunlight. High temperatures will reduce working times, Low temperatures and/or high humidity will extend working, set and dry times.

**Preparation** - The substrate must be approved by Master Wall Inc., clean, dry, structurally sound and free of efflorescence, oil, grease, form release agents and curing compounds or anything that would affect bond. Painted surfaces are not acceptable and must be removed. Concrete and surfaces should cure for a minimum of 28 days. Stucco should be cured until clean, dry and hard—typically 14 days.

Interior drywall should be finished and made ready for paint. Prime surfaces with *Primecoat/Sanded Primecoat* primer prior to finishing.

**Base Coats** - Must be flat, dry hard, and free of efflorescence. Master Wall base coats must cure a minimum of 12 hours before application of Superior Finish. Substrates of brick, masonry or concrete should be leveled smooth using either Master Wall base coats or stucco.

**Mixing** - Thoroughly stir *Superior Finish* using a heavy duty 1/2" drill at 400 - 500 rpm and a heavy duty mixing paddle. Small amounts of clean, potable water may be added to obtain a workable consistency. To avoid color variations, add the same amount of water to each pail. Do not exceed 24 ounces (0.7L) of water per pail of finish.

**Application** — Apply a uniform thickness (about 1/16") of *Superior Finish* to the substrate using a stainless steel trowel. Spread evenly and then scrape the finish coat down to a thickness no greater than the largest aggregate in the material. Immediately float the finish coat using a plastic float to the desired texture. Always maintain a wet edge to achieve uniformity of texture and color.

### **For Professional Results**

- Apply finish coats away from direct sunlight. Cold joints or color variations can occur if the finish dries too quickly.

- Consider priming stucco surfaces with *Primecoat/Sanded Primecoat* to even out finish absorption.
- Surfaces exposed to the weather must be sloped (6:12 minimum).
- Under certain conditions dark colors may show efflorescence on the surface during the cure process.
- Finishes are intended for the approved substrates listed above and should not be applied directly to gypsum board or insulation board products.

**Clean Up**—Tools and equipment can be cleaned with soapy water while the *Superior Finish* is still wet.

### **Available Options**



Elastomeric Additive



Silicone Additive



Excel Mildew Additive



**Master Wall Inc.**  
*Building a Culture of Excellence*

P. O. Box 397  
 Fortson, GA 31808

800-755-0825

Technical 800-760-2861

[masterwall.com](http://masterwall.com)

050111

Information contained in this product data sheet conforms to the standard detail recommendations and specifications for the installation of Master Wall Inc. products and is presented in good faith. Master Wall Inc. assumes no liability, expressed or implied as to the architecture, engineering, or workmanship of any project. This information may be concurrent with, or superseded by other applicable documents, such as specifications and details. Contact Master Wall Inc. for the most current product information.



# F&M Plus



*F&M Plus is the high-build version of our Foam & Mesh*

## High Build Foam & Mesh

**Adhesive & Base Coat**

*Adhesive (F&M) used in Master Wall Systems*

*or over prepared substrates. Fibered F&M Plus is available in five-gallon (19L) pails and is mixed 1:1 with Portland cement to a creamy consistency. F&M Plus trowels out smoothly with a stainless steel trowel to provide superior leveling capability up to 1/4" (6.4 mm) thickness.*

### Application Procedure

**Job Conditions** - Air and substrate temperature for application of *F&M Plus* must be 40°F (5°C) or higher and must remain 40°F (5°C) or higher for a minimum of 24 hours. Provide temporary protection to protect the wall system from damage until permanent flashings, caps and sealants are installed. Store materials within prescribed temperature limits and out of direct sunlight. Working and drying times are based upon normal room temperature conditions and will vary with temperature and humidity.

**Preparation** - The substrate must be approved by Master Wall Inc., clean, dry, structurally sound and free of efflorescence, oil, grease, form release agents and curing compounds or anything that would affect bond. Painted surfaces are not acceptable and must be removed.

**Mixing** - Thoroughly stir *F&M Plus* using a heavy duty 1/2" (12.7 mm) drill at 400 - 500 rpm and a heavy duty mixing paddle. Pour half of the stirred *F&M Plus* into a clean plastic pail. Add Type I or I-II Portland cement to the half pail of *F&M Plus* in a ratio of one-to-one by weight and mix to a homogenous consistency. Let the mixture stand for 3 to 5 minutes and then stir to a creamy consistency. Up to 30 ounces (0.9L) of clean, potable water may be added to a half pail to adjust workability. Do not over mix as faster setting or reduced working time can occur. Do not add accelerators or retarders to the *F&M Plus* mixture.

### Application

Adhesive application – Over gypsum substrates, apply the *F&M* mixture directly to the back of the insulation board using a 3/8"x3/8"x3/8" (9.5x9.5x9.5 mm) or a 3/8"x1/2"x1-1/2" (9.5x13x38 mm) stainless steel notched trowel. With the trowel at a 45° angle, cover the entire back of the insulation board with full beads of adhesive. Apply the adhesive so the ribbons run vertically when applied to the wall.

Over non-gypsum substrates, you may use the above described notched trowel method or the 'ribbon and dab' method. Using a stainless steel plastering trowel, apply a 2" (50.8 mm) wide by 3/8" (9.5 mm) high ribbon of the *F&M Plus* mixture around the entire perimeter of the insulation board. Place 8 dabs of the *F&M Plus* mixture 3/8" (9.5 mm) thick by 4" (102 mm) in diameter approximately 8" (204 mm) on center inside the ribbon.

Immediately place the prepared insulation board on the substrate. Make sure that all edges of the insulation board are abutted tightly and that no *F&M Plus* mixture gets into the board joints. Do not allow the *F&M Plus* mixture to form a skin prior to placing the insulation board on the substrate. Do not apply the *F&M Plus* mixture directly onto the substrate.

For base coat application – All imperfections in the insulation board must be rasped flush and any gaps in the insulation board must be filled with slivers of insulation. Apply the *F&M Plus* mixture over the entire surface of the insulation board or substrate in a thickness greater than that of the reinforcing fabric being used (approximately 1/16" (1.6 mm) for standard mesh and 3/32" (2.4 mm) for Ultra Mesh). Immediately embed the reinforcing fabric into the wet *F&M Plus* mixture and smooth from the center to the edge to avoid wrinkles. The reinforcing fabric must be continuous at all corners and lapped or abutted in accordance to Master Wall specifications. The color of the mesh shall not be visible but a slight mesh pattern may be visible.

### Statistics

#### Coverage (Estimated/varies)

Adhesive & Standard Base: 120 sf (11 sm)  
Single Layer Mesh Only : 240-280 sf (22-26 sm)  
Double Layer Mesh Only: 80-230 sf (7.5-21 sm)  
Notched Trowel Only: 135 sf (12.5 sm)  
  
Pail Weight: 60 lbs (27kg)

Working Time: 1 hour @ room temperature

Drying Time: 12 hours @ room temperature

Application Range: 40°-110°F (5°-43°C)

Shelf Life: 2 years

**Clean Up**—Tools and equipment can be cleaned with soapy water while the *F&M Plus* is still wet.



Information contained in this product data sheet conforms to the standard detail recommendations and specifications for the installation of Master Wall Inc. products and is presented in good faith. Master Wall Inc. assumes no liability, expressed or implied as to the architecture, engineering, or workmanship of any project. This information may be concurrent with, or superseded by other applicable documents, such as specifications and details. Contact Master Wall Inc. for the most current product information.

### Approved Substrates

Exterior gypsum sheathing  
(ASTM C79, C1177)  
Dens Glass Gold®  
GlasRoc®  
FiberBond®  
Gold Bond e<sup>2</sup>xp®  
Securock®  
Durock®  
PermaBase®  
Util-A-Crete®, ProTEC®,  
ProGUARD®  
Concrete  
Brick  
Masonry  
Metal Lath  
Others approved in writing



# MBB Plus



Master Wall MBB Plus is a single-component polymer

## Master Wall Bagged Base

High Build Adhesive & Base Coat

modified high build dry bagged

base coat and adhesive that is mixed with water at time of use. Use MBB Plus in Master Wall Systems or over prepared substrates including brick, masonry, concrete and stucco. MBB Plus is freeze stable in dry form mixes to a creamy consistency.

### Approved Substrates

- Exterior gypsum sheathing (ASTM C79)
- Dens Glass Gold®
- GlasRoc®
- FiberBond®
- Gold Bond e<sup>2</sup>xp®
- Durock®
- PermaBase®
- Util-A-Crete®, ProTEC®, ProGUARD®
- Concrete
- Brick
- Masonry
- Metal Lath
- Others approved in writing

### Application Procedure

**Job Conditions** - Air and substrate temperature for application of MBB Plus must be 40°F (5°C) or higher and must remain 40°F (5°C) or higher for a minimum of 24 hours. Provide temporary protection to protect the wall system from damage until permanent flashings, caps and sealants are installed. Store materials within prescribed temperature limits and out of direct sunlight. Working and drying times are based upon normal room temperature conditions and will vary with thickness, temperature and humidity.

**Preparation** - The substrate must be approved by Master Wall Inc., clean, dry, structurally sound and free of efflorescence, oil, grease, form release agents and curing compounds or anything that would affect bond. Painted surfaces are not acceptable and must be removed.

**Mixing** - Add 5 to 6 quarts (4.7-5.7L) of potable water to a clean plastic pail. Add the MBB Plus slowly while stirring using a heavy-duty 1/2" (12.7 mm) drill at 400 - 500 rpm and a heavy-duty Mixer. Mix thoroughly to a homogenous consistency. Let the mixture stand for 3 to 5 minutes and then stir to a creamy consistency. Small amounts of clean, potable water may be added to obtain a workable consistency. Do not over mix. Excessive stirring may cause faster setting and reduced working time. Do not add accelerators or retarders to the MBB Plus mixture.

### Application

**Adhesive Application** - Over gypsum substrates, apply the F&M mixture directly to the back of the insulation board using a 3/8"x3/8"x3/8" (9.5x9.5x9.5 mm) or a 3/8"x1/2"x1-1/2" (9.5x13x38 mm) stainless steel notched trowel. With the trowel at a 45° angle, cover the entire back of the insulation board with full beads of adhesive. Apply the adhesive so the ribbons run vertically when applied to the wall.

**Masonry Substrates (non-drainage)** - Use the above described notched trowel method or the 'ribbon and dab' method. Using a stainless steel plastering trowel, apply a 2" (50.8 mm) wide by 3/8" (9.5 mm) high ribbon of the MBB Plus mixture around the entire perimeter of the insulation board. Place 8 dabs of the MBB Plus mixture 3/8" (9.5 mm) thick by 4" (102 mm) in diameter approximately 8" (204 mm) on center inside the ribbon.

Immediately place the prepared insulation board on the substrate. Make sure that all edges of the insulation board are abutted tightly and that no MBB Plus mixture gets into the board joints. Do not allow the MBB Plus mixture to form a skin prior to placing the insulation board on the substrate. Do not apply the MBB Plus mixture directly onto the substrate.

**Base Coat Application** - All imperfections in the insulation board must be rasped flush and any gaps in the insulation board must be filled with slivers of insulation. Apply the MBB Plus mixture over the entire surface of the insulation board or approved substrate in a thickness greater than that of the reinforcing fabric being used (approximately 1/16" (1.6 mm) for standard mesh and 3/32" (2.4 mm) for Ultra Mesh).

### Statistics

#### Coverage (Estimated/varies)

Adhesive & Standard Base: 50-60 sf (4.6-5.6 sm)

Single Layer Mesh Only : 100-125 sf (9-11.5 sm)

High Build (1/8"): 50-60 sf (4.6-5.6 sm)

Notched Trowel Only: 56 sf (5.2 sm)

Bag Weight: 50 lbs (22.7kg)

Working Time: 1 hour @ room temperature

Drying Time: 12 hours @ room temperature

Application Range: 40°-110°F (5°-43°C)

Shelf Life: 1 year

Immediately embed the reinforcing fabric into the wet MBB Plus mixture and smooth from the center to the edge to avoid wrinkles. The reinforcing fabric must be continuous at all corners and lapped or abutted in accordance to Master Wall specifications. The color of the mesh shall not be visible but a slight mesh pattern may be visible.

**Clean Up**—Tools and equipment can be cleaned with soapy water while the MBB Plus is still wet.



Information contained in this product data sheet conforms to the standard detail recommendations and specifications for the installation of Master Wall Inc. products and is presented in good faith. Master Wall Inc. assumes no liability, expressed or implied as to the architecture, engineering, or workmanship of any project. This information may be concurrent with, or superseded by other applicable documents, such as specifications and details. Contact Master Wall Inc. for the most current product information.

P. O. Box 397  
Fortson, GA 31808  
800-755-0825  
Technical 800-760-2861  
www.masterwall.com



*Foam & Mesh Adhesive (F&M) is a high performance base coat and adhesive used in Master Wall Systems or over prepared substrates including brick, masonry, concrete and stucco. F&M is available in five-gallon (19L) pails and is mixed 1:1 with Portland cement to a creamy consistency. F&M trowels out smoothly with a stainless steel trowel and is the premium choice for embedding mesh or leveling walls.*

## Foam & Mesh Adhesive & Base Coat

### Application Procedure

**Job Conditions** - Air and substrate temperature for application of F&M must be 40°F (5°C) or higher and must remain 40°F (5°C) or higher for a minimum of 24 hours. Provide temporary protection to protect the wall system from damage until permanent flashings, caps and sealants are installed. Store materials within prescribed temperature limits and out of direct sunlight. Working and drying times are based upon normal room temperature conditions and will vary with temperature and humidity.

**Preparation** - The substrate must be approved by Master Wall Inc., clean, dry, structurally sound and free of efflorescence, oil, grease, form release agents and curing compounds or anything that would affect bond. Painted surfaces are not acceptable and must be removed.

**Mixing** - Thoroughly stir F&M using a heavy duty 1/2" (12.7 mm) drill at 400 - 500 rpm and a heavy duty mixing paddle. Pour half of the stirred F&M into a clean plastic pail. Add Type I or I-II Portland cement to the half pail of F&M in a ratio of one-to-one by weight and mix to a homogenous consistency. Let the mixture stand for 3 to 5 minutes and then stir to a creamy consistency. Up to 30 ounces (0.9L) of clean, potable water may be added to a half pail to adjust workability. Do not over mix as faster setting or reduced working time can occur. Do not add accelerators or retarders to the F&M mixture.

### Application

Adhesive application – Over gypsum substrates, apply the F&M mixture directly to the back of the insulation board using a 3/8"x3/8"x3/8" (9.5x9.5x9.5 mm) or a 3/8"x1/2"x1-1/2" (9.5x13x38 mm) stainless steel notched trowel. With the trowel at a 45° angle, cover the entire back of the insulation board with full beads of adhesive. Apply the adhesive so the ribbons run vertically when applied to the wall.

Over non-gypsum substrates, you may use the above described notched trowel method or the 'ribbon and dab' method. Using a stainless steel plastering trowel, apply a 2" (50.8 mm) wide by 3/8" (9.5 mm) high ribbon of the F&M mixture around the entire perimeter of the insulation board. Place 8 dabs of the F&M mixture 3/8" (9.5 mm) thick by 4" (102 mm) in diameter approximately 8" (204 mm) on center inside the ribbon.

Immediately place the prepared insulation board on the substrate. Make sure that all edges of the insulation board are abutted tightly and that no F&M mixture gets into the board joints. Do not allow the F&M mixture to form a skin prior to placing the insulation board on the substrate. Do not apply the F&M mixture directly onto the substrate.

For base coat application – All imperfections in the insulation board must be rasped flush and any gaps in the insulation board must be filled with slivers of insulation. Apply the F&M mixture over the entire surface of the insulation board in a thickness greater than that of the reinforcing fabric being used (approximately 1/16" (1.6 mm) for standard mesh and 3/32" (2.4 mm) for Ultra Mesh). Immediately embed the reinforcing fabric into the wet F&M mixture and smooth from the center to the edge to avoid wrinkles. The reinforcing fabric must be continuous at all corners and lapped or abutted in accordance to Master Wall specifications. The color of the mesh shall not be visible but a slight mesh pattern may be visible.

### Statistics

#### Coverage (Estimated/varies)

Adhesive & Standard Base: 120 sf (11 sm)  
 Single Layer Mesh Only : 240-280 sf (22-26 sm)  
 Double Layer Mesh Only: 80-230 sf (7.5-21 sm)  
 Notched Trowel Only: 135 sf (12.5 sm)

Pail Weight: 60 lbs (27kg)

Working Time: 1 hour @ room temperature

Drying Time: 12 hours @ room temperature

Application Range: 40°-110°F (5°-43°C)

Shelf Life: 2 years

**Clean Up**—Tools and equipment can be cleaned with soapy water while the F&M is still wet.

### Approved Substrates

- Exterior gypsum sheathing (ASTM C79, C1177)
- Dens Glass Gold®
- GlasRoc®
- FiberBond®
- Gold Bond e<sup>2</sup>xp®
- Securock®
- Durock®
- PermaBase®
- Util-A-Crete®, ProTEC®, ProGUARD®
- Concrete
- Brick
- Masonry
- Metal Lath
- Others approved in writing



Information contained in this product data sheet conforms to the standard detail recommendations and specifications for the installation of Master Wall Inc. products and is presented in good faith. Master Wall Inc. assumes no liability, expressed or implied as to the architecture, engineering, or workmanship of any project. This information may be concurrent with, or superseded by other applicable documents, such as specifications and details. Contact Master Wall Inc. for the most current product information.

P. O. Box 397  
 Fortson, GA 31808  
 800-755-0825  
 Technical 800-760-2861  
[www.masterwall.com](http://www.masterwall.com)



*Master Wall Bagged Base (MBB) is a dry version of*

## Master Wall Bagged Base Adhesive & Base Coat

*our Foam & Mesh Adhesive (F&M). Use MBB as an adhesive or base coat in Master Wall Systems or over prepared substrates including brick, masonry, concrete and stucco. MBB is freeze stable in dry form and is easily mixed with clean potable water to a creamy consistency.*

### Application Procedure

**Job Conditions** - Air and substrate temperature for application of *MBB* must be 40°F (5°C) or higher and must remain 40°F (5°C) or higher for a minimum of 24 hours. Provide temporary protection to protect the wall system from damage until permanent flashings, caps and sealants are installed. Store materials within prescribed temperature limits and out of direct sunlight. Working and drying times are based upon normal room temperature conditions and will vary with temperature and humidity.

**Preparation** - The substrate must be approved by Master Wall Inc., clean, dry, structurally sound and free of efflorescence, oil, grease, form release agents and curing compounds or anything that would affect bond. Painted surfaces are not acceptable and must be removed.

**Mixing** - Add 5 to 6 quarts (4.7-5.7L) of potable water to a clean plastic pail. Add the *MBB* slowly while stirring using a heavy-duty 1/2" (12.7 mm) drill at 400 - 500 rpm and a heavy-duty Mixer. Mix thoroughly to a homogenous consistency. Let the mixture stand for 3 to 5 minutes and then stir to a creamy consistency. Small amounts of clean, potable water may be added to obtain a workable consistency. Do not over mix. Excessive stirring may cause faster setting and reduced working time. Do not add accelerators or retarders to the *MBB* mixture.

### Application

Adhesive application – Over gypsum substrates, apply the *F&M* mixture directly to the back of the insulation board using a 3/8"x3/8"x3/8" (9.5x9.5x9.5 mm) or a 3/8"x1/2"x1-1/2" (9.5x13x38 mm) stainless steel notched trowel. With the trowel at a 45° angle, cover the entire back of the insulation board with full beads of adhesive. Apply the adhesive so the ribbons run vertically when applied to the wall.

Over non-gypsum substrates, you may use the above described notched trowel method or the 'ribbon and dab' method. Using a stainless steel plastering trowel, apply a 2" (50.8 mm) wide by 3/8" (9.5 mm) high ribbon of the *MBB* mixture around the entire perimeter of the insulation board. Place 8 dabs of the *MBB* mixture 3/8" (9.5 mm) thick by 4" (102 mm) in diameter approximately 8" (204 mm) on center inside the ribbon.

Immediately place the prepared insulation board on the substrate. Make sure that all edges of the insulation board are abutted tightly and that no *MBB* mixture gets into the board joints. Do not allow the *MBB* mixture to form a skin prior to placing the insulation board on the substrate. Do not apply the *MBB* mixture directly onto the substrate.

For base coat application – All imperfections in the insulation board must be rasped flush and any gaps in the insulation board must be filled with slivers of insulation. Apply the *MBB* mixture over the entire surface of the insulation board in a thickness greater than that of the reinforcing fabric being used (approximately 1/16" (1.6 mm) for standard mesh and 3/32" (2.4 mm) for Ultra Mesh). Immediately embed the reinforcing fabric into the wet *MBB* mixture and smooth from the center to the edge to avoid wrinkles. The reinforcing fabric must be continuous at all corners and lapped or abutted in accordance to Master Wall specifications. The color of the mesh shall not be visible but a slight mesh pattern may be visible.

### Statistics

#### Coverage (Estimated/varies)

Adhesive & Standard Base: 50-60 sf (4.6-5.6 sm)

Single Layer Mesh Only : 100-125 sf (9-11.5 sm)

Double Layer Mesh Only: 30-110 sf (2.5-10 sm)

Notched Trowel Only: 56 sf (5.2 sm)

Bag Weight: 50 lbs (22.7kg)

Working Time: 1 hour @ room temperature

Drying Time: 12 hours @ room temperature

Application Range: 40°-110°F (5°-43°C)

Shelf Life: 1 year

**Clean Up**—Tools and equipment can be cleaned with soapy water while the *MBB* is still wet.



## Master Wall Inc.

Building a Culture of Excellence

Information contained in this product data sheet conforms to the standard detail recommendations and specifications for the installation of Master Wall Inc. products and is presented in good faith. Master Wall Inc. assumes no liability, expressed or implied as to the architecture, engineering, or workmanship of any project. This information may be concurrent with, or superseded by other applicable documents, such as specifications and details. Contact Master Wall Inc. for the most current product information.

### Approved Substrates

- Exterior gypsum sheathing (ASTM C79)
- Dens Glass Gold®
- GlasRoc®
- FiberBond®
- Gold Bond e<sup>2</sup>xp®
- Durock®
- PermaBase®
- Util-A-Crete®, ProTEC®, ProGUARD®
- Concrete
- Brick
- Masonry
- Metal Lath
- Others approved in writing

# Aggre-flex Mesh



Master Wall Aggre-flex Mesh is a specially woven, **AR Glass Fiber** glass fiber mesh with AR Coating (Alkali Resistive). **Master Wall Systems**

Embedded in Master Wall base coats, Aggre-flex Mesh is the key impact and tensile component in Master Wall EIFS and wall systems. It can also improve crack resistance in Master Wall Stucco Systems or traditional stucco.

## General

### Mesh Properties

ASTM D76, D578, D579, D3659, D4029, D5035, E2098, E2486  
MIL-Y-1140

Weave: Leno

Mesh	Weight	Roll Size	Tensile (warp/fill)	Coverage*
<b>Detail</b>	4.5 oz/sy (113 g/sm)	9.5" x 150' (96.5cm x 45.7m)	140/150	119 sf (11 sm)
<b>Standard</b>	4.5 oz/sy (113 g/sm)	38" x 150' (96.5cm x 45.7m)	140/150	475 sf (44.1 sm)
<b>Hi-Tech</b>	6.0 oz/sy (202 g/sm)	38" x 150' (96.5cm x 45.7m)	140/250	475 sf (44.1 sm)
<b>Medium</b>	12.0 oz/sy (313 g/sm)	38" x 75' (96.5cm x 22.8m)	300/500	238 sf (22.1 sm)
<b>Strong</b>	15.4 oz/sy (508 g/sm)	38" x 75' (96.5cm x 22.8m)	350/600	238 sf (22.1 sm)
<b>Ultra</b>	21.0 oz/sy (675 g/sm)	38" x 75' (96.5cm x 22.8m)	750/500	238 sf (22.1 sm)
<b>Corner Roll</b>	9.5 oz/sy (238 g/sm)	9.5" x 150' (96.5cm x 45.7m)	274/274	150 lf (45.7 m)

\*Allow about 10% waste for lapping all meshes (Strong, Ultra and Corner Roll Meshes are butted). Coverage will vary.

## Mesh Types

**Detail Mesh** – super soft, pliable mesh used for backwrapping, special shapes, and detail work.

**Standard Mesh** – Standard weight mesh for wall areas and general detailing.

**Hi-Tech Mesh** – Upgraded heavier weight version of *Standard Mesh* with good workability.

**Medium Mesh** – Extra tough heavy weight mesh. Best for areas of light traffic.

**Strong Mesh** – Great high traffic mesh where impacts are a consideration.

**Ultra Mesh** – Best where abuse is expected. Ultra heavy for high traffic areas.

*Strong Mesh and Ultra Mesh must be used in a two-layer system with Standard Mesh, Hi-Tech Mesh, or Medium Mesh.*

**Corner Roll**– For highly impact resistant corners. Apply under Standard or higher mesh.

## Application Procedure

**Job Conditions** - Air and substrate temperature for application of the *Reinforcing Mesh* must be 40°F (5°C) or higher and must remain 40°F (5°C) or higher for a minimum of 24 hours. Provide temporary protection at all times until the wall system, including flashings, caps, and sealants, is completed to provide protection from climatic conditions and other potential damage.

**Application** - All imperfections in the insulation board must be rasped flush and any gaps in the insulation board must be filled with slivers of insulation. Apply the base coat over the entire surface of the insulation board in a thickness greater than that of the *Reinforcing Mesh* being used, approximately 1/16" (1.6 mm) for Standard Mesh and 3/32" (2.4 mm) for Ultra Mesh. Immediately embed the *Aggre-flex Mesh* into the wet base coat and smooth from the center to the edge to avoid wrinkles. Lap all meshes except Strong Mesh and Ultra Mesh a minimum of 2-1/2" (63.5 mm) on all sides. The reinforcing fabric must be continuous at all corners and lapped or abutted in accordance to Master Wall specifications. The color of the mesh shall not be visible but a slight mesh pattern may be visible. The overall minimum thickness of the base coat should be a nominal 1/16" (1.6 mm) when dry.

When applying **Strong, Ultra or Corner Roll Mesh**, tightly abut all edges and let cure for a minimum of 12 hours. Grind any imperfections with the edge of a stainless steel trowel or grinding stone, taking care not to damage the *Aggre-flex Mesh*, and apply a layer of **Standard Mesh, Hi-Tech Mesh, or Medium Mesh** as per the directions in the preceding paragraph. To minimize wall variations, the lap of the second mesh layer should not coincide with the abutment of the first layer.

### Special Conditions and Recommendations

Apply backwrapping mesh or other approved accessory at all terminations of the insulation board. This includes at the top and bottom of all walls and at all openings.

*Aggre-flex Mesh* may be wrapped from the face of the insulation board onto a foundation or onto the studs of an opening on barrier wall systems. In all cases, the exposed edges of the insulation board must be wrapped with *Aggre-flex Mesh* and base coat or an approved accessory trim.

#### Impact ASTM E2486 (Formerly EIMA 101.86)

Standard Mesh	Medium Impact Resistance	50-89 in-lbs (5.7-10.1J)
Hi Tech Mesh	Medium Impact Resistance	50-89 in-lbs (5.7-10.1J)
Medium Mesh	Medium Impact Resistance	50-89 in-lbs (5.7-10.1J)
Medium & Standard	High Impact Resistance	90-150 in-lbs (10.2-17.0J)
Strong & Standard	High Impact Resistance	90-150 in-lbs (10.2-17.0J)
Ultra & Standard	Ultra High Impact Resistance	150+ in-lbs (over17.0J)



Information contained in this product data sheet conforms to the standard detail recommendations and specifications for the installation of Master Wall Inc. products and is presented in good faith. Master Wall Inc. assumes no liability, expressed or implied as to the architecture, engineering, or workmanship of any project. This information may be concurrent with, or superseded by other applicable documents, such as specifications and details. Contact Master Wall Inc. for the most current product information.

P. O. Box 397  
Fortson, GA 31808

800-755-0825

Technical 800-760-2861

masterwall.com



## **Part 1 General**

### **1.01 GENERAL**

- A. The Master Wall Uninsulated Finish System is comprised of an acrylic modified base coat, fiberglass mesh, and an acrylic finish that is applied over a variety of structural or nonstructural substrates.

### **1.02 SCOPE OF WORK**

- A. Provide all materials, labor, and equipment to install the Field Applied and/or Panelized Master Wall Uninsulated Finish System.
- B. Related Sections:
  - 1. Concrete 03300
  - 2. Unit Masonry 04200
  - 3. Light Gauge Steel Framing 05400
  - 4. Sheathing 06100
  - 5. Sheet Metal Flashing and Trim 07620
  - 6. Sealants 07900
  - 7. Doors and Windows 08000

### **1.03 TERMS / DEFINITIONS**

- A. Applicator – The contractor that applies the Master Wall Uninsulated Finish System.
- B. Base Coat – The material applied to the face of the substrate.
- C. Base Coat Mixture – A field mixed blend of base coat and Portland cement.
- D. Building Expansion Joint – A joint through the entire building structure designed to accommodate structural movement.
- E. Expansion Joint – A designed joint in the continuity of a material, assembly, or system, designed to accommodate movement.
- F. Finish Coat – An acrylic based, factory mixed decorative and protective coating that is applied to the base coat or to an approved substrate that has been properly prepared and primed.
- G. Primer – An acrylic solution applied to the substrate to equalize the absorption and/or enhance the bond of the coating.
- H. Reinforcing Mesh – Balanced, open weave, basic glass fiber mesh supplied by the manufacturer of the Uninsulated Finish System, treated for compatibility with other materials of the system, which functions to strengthen the system and adds impact resistance.
- I. Substrate - The approved material to which the Uninsulated Finish System is applied.
- J. Uninsulated Finish System – Coatings that are applied over a variety of substrates, without insulation, in one or multiple coats.



## 1.04 QUALITY ASSURANCE

### A. Design and Detailing

#### 1. General

- a. Master Wall Inc.'s current published specifications, data sheets, technical bulletins and other literature/information are minimum standards and guidelines that shall be followed when designing and detailing a project with the Master Wall Uninsulated Finish System.
- b. Details shall conform to Master Wall Inc.'s specifications and application instructions and shall be consistent with the project requirements.
- c. Master Wall Inc. must approve deviations from the standard published specifications and application instructions in writing.
- d. The architect, engineer or the designer of the project should determine where the dew point would occur in relationship to the wall assembly and the project location during summer and winter conditions.
- e. The minimum slope of inclined surfaces shall not be less than 6" in 12" with a maximum length of 12" unless approved in writing by Master Wall Inc. Inclined surfaces which are or could be defined as roofs by the building codes or application are not approved by Master Wall Inc.
- f. The Master Wall Uninsulated Finish System shall not be used on parapet caps.
- g. It is the responsibility of the architect and the purchaser to determine if a product is suitable for their intended use. The architect or designer of the project shall be responsible for all decisions pertaining to the design, details, structural capability, attachment details, shop drawings and the like. Master Wall Inc. has prepared specifications, data sheets and technical bulletins to assist as guidelines for the use and installation of the products. Master Wall Inc. is not responsible for the design, details, structural capability, attachment details and shop drawings whether it is based on Master Wall Inc.'s information or not.

#### 2. Substrates

- a. Acceptable substrates are poured in place concrete, precast concrete, block, brick, and conventional stucco.
- b. The flatness and finished appearance of the Master Wall Uninsulated Finish System will depend on the flatness of the substrate and the skill of the applicator.
- c. Substrates not approved in the manufacturer's published literature shall be approved by the manufacturer in writing prior to the application of the system.
- d. The project architect or engineer shall engineer the substrate with regard to the required structural performance.

#### 3. Expansion Joints

- a. Expansion joints
- b. are required at building expansion joints, at prefabricated panel joints, where substrates change, and where structural movement is anticipated. Reference construction documents for specific locations.



#### 4. Sealants

- a. Sealants and backer rod, as required at expansion joints and dissimilar substrates, shall provide a complete watertight system.
- b. The sealants in an expansion joint, or any sealant joint that anticipates significant movement, shall be bonded to the base coat, not the finish coat. Providing reinforcing mesh is used, the color of the mesh shall not be visible and the texture of the mesh shall not be exposed within the base coat at these locations.

#### 5. Flashings

- a. Roof
  - 1) Crickets and step flashing shall be properly installed around chimneys.
  - 2) Flashing shall be installed at rooflines in a manner to prevent any intrusion of water behind the Uninsulated Finish System. This shall include the use of roof kick-out flashing at roof terminations.
- b. Openings
  - 1) Heads, jambs, and sills of all rough openings shall be treated in accordance with the designers' requirements and per window manufacturer requirements in a manner to prevent any intrusion of water behind the Uninsulated Finish System.

#### 6. Penetrations

- a. All penetrations through the system such as hose bibs, dryer vents, lighting fixtures, air-conditioning hoses, etc. must be properly sealed to insure the integrity of the system.

#### B. Qualifications

1. The Manufacturer shall have manufactured Uninsulated Finish System in the United States for at least 10 years.
2. The Applicator shall be knowledgeable in the proper installation of the Uninsulated Finish System.
3. The Applicator shall have demonstrated the ability to install the system on projects of similar size and complexity.
4. The Manufacturer of the substrate shall have demonstrated the ability to manufacture the substrate for projects of similar size and complexity.
5. The Applicator shall provide the proper equipment, manpower and supervision on the job site to install the system in compliance with project plans and specifications.
6. The sealant contractor shall be experienced in the installation of high performance industrial and commercial sealants.
7. Prior to the installation of the Master Wall Uninsulated Finish System, erect sample wall mock-up using materials and joint details required for final work. Provide special features as directed for sealant and contiguous work. Build mock-up at the site where directed of full thickness, indicating the proposed color, texture, and workmanship to be expected in the completed work. Obtain architect's acceptance of the mock-up in regard to aesthetic quality before start of work. Retain mock-up during construction as a standard for judging completed work. Do not alter, move, or destroy mock-up until work is completed, and until final acceptance of the project by architect.



#### 1.05 SUBMITTALS

- A. The Applicator shall submit a list of completed projects of like size and complexity.
- B. The Applicator shall submit a certificate of training indicating that they have been given instructions on the proper installation of the Uninsulated Finish System.
- C. The Applicator shall submit Uninsulated Finish System Manufacturer's current literature, data sheets, brochures, and specifications.
- D. The Applicator shall submit sufficient samples of each finish texture and color selected. The samples shall be prepared with the same tools and techniques required for the actual project. Color and texture should be approved based on the job site mock-up samples.
- E. The Applicator shall provide any shop drawings that may be applicable to the project for approval by the project architect.

#### 1.06 DELIVERY, STORAGE AND HANDLING

- A. Deliver all materials in original unopened packages with labels intact. Verify all quantities, colors, and textures against bill of lading.
- B. Store all materials protected from direct exposure to weather conditions and at temperatures not less than 40° F (4° C) or greater than 110° F (43° C).
- C. Material safety data sheets (MSDS) shall be supplied for the components of the Uninsulated Finish System and be available at the job site.

#### 1.07 JOB CONDITIONS

- A. Ambient air temperatures shall be 40° F (4° C) or greater and rising at the time of installation of the Master Wall Inc. products and shall remain at 40° F (4° C) or greater for at least 24 hours after application.
- B. Provide supplemental heat and protection as required when the temperature and conditions are not in accordance with installation requirements. Sufficient ventilation and time shall be provided to ensure that materials have sufficiently dried prior to removing supplemental heat.
- C. Adequate protection shall be provided to prevent weather conditions (humidity, temperature, and precipitation) from having an affect on the curing or drying time of Master Wall Inc. materials.
- D. Adjacent materials and the Uninsulated Finish System shall be protected during installation and while curing from weather and shall be protected from site damage.
- E. Coordinate installation of the Master Wall Uninsulated Finish System with related work specified in other sections to ensure that the wall assembly is protected to prevent water from getting behind the Uninsulated Finish System. The cap flashing shall be installed as soon as possible after the finish coat has been applied. When this is not possible, temporary protection shall be provided immediately in this area.
- F. All sealants shall be installed in a timely manner. Protect open joints from water intrusion during construction with backer rod, or temporary covering, until permanently sealed.
- G. Sufficient manpower and equipment shall be employed to ensure a continuous operation, free of cold joints, scaffolding lines, texture variations, etc.



## 1.08 REPAIR AND MAINTENANCE

- A. Refer to Master Wall Inc. specific repair and maintenance procedures.
- B. Sealants and flashings shall be inspected annually to verify that the products are not allowing water intrusion behind the Uninsulated Finish System. If sealant and/or flashings are allowing water intrusion behind the Uninsulated Finish System, repairs should be made immediately.

## 1.09 LIMITED MATERIALS WARRANTY

- A. A Limited Materials Warranty shall be issued upon the receipt of a properly completed warranty request form.

## PART 2 PRODUCTS

### 2.01 GENERAL

- A. All components of the Master Wall Uninsulated Finish System shall be obtained from Master Wall Inc. or its authorized distributors. No substitutions of, or additions of, other materials shall be submitted without prior written permission from Master Wall Inc. Substitutions or additions will void the warranty.

### 2.02 MATERIALS

- A. Bonding Agent (as needed)
  1. BA57 – An acrylic emulsion that is applied to approved substrates that are properly prepared to equalize the absorption and/or enhance the bond of the coatings.
- B. Reinforcing Mesh (optional)
  1. Standard Mesh – nominal 4.5 oz./sq. yd. open weave glass fiber fabric, treated for alkaline resistance and compatibility with Master Wall Base Coats, and conforming to ASTM D-76, D-579, D-5035, and MIL-Y-1140.
- C. Base Coats
  1. F & M Plus (preferred): An acrylic-based product mixed one-to-one by weight with Portland cement designed for use over an approved substrate. (F & M Plus is recommended for use as the base coat in the Master Wall Uninsulated Finish System when substrates require leveling.)
  2. Foam & Mesh (F&M) Adhesive: An acrylic-based product mixed one-to-one by weight with Portland cement designed for use over an approved substrate.
  3. Bagged Base Coat (MBB): A polymer based cementitious product mixed with 5 to 6 quarts of water for use over an approved substrate.
- D. Water Resistant Base Coat
  1. Guardian – An acrylic-based product mixed one-to-one by weight with Portland cement for use over an approved substrate. (This product should be used as designated on the construction drawings where additional resistance to moisture is needed, i.e. sloped surfaces.)



- E. Finish: Master Wall Inc.'s "Superior" Finishes are acrylic-based wall coatings available in a variety of colors and textures. The following textures are available:
1. Perfect - riled texture
  2. Spray – sand type texture
  3. R-Coarse – coarse riled texture
  4. Desert Sand – coarse sand texture
  5. Refinish – fine texture used to create numerous finishes
  6. Superior Stone & Aggrestone Finishes – clear acrylic matrix filled with colored ceramic beads

Note: The above textures excluding Superior Stone & Aggrestone Finishes are also available in the Aggre-flex Superior Silicone Coat product line, the Superior Elastomeric Coat product line, and the Aggre-flex Superior Excel Finish Coat product line. Superior Silicone Coat combines acrylic and the siloxane polymers to provide the maximum resistance to moisture. Superior Elastomeric Coat utilizes elastomeric polymers to enable the finishes to bridge minor cracking. Superior Excel Finish Coat provides additional protection from mildew and algae.

- F. Water: Shall be clear, clean and potable without any foreign matter in the solution that may affect the color and setting qualities of the cement, base or finish coat.
- G. Cement: Type I or I-II Portland cement meeting ASTM C-150.
- H. Sealants Systems (waterproofing trades): Reference sealant specification (Section 07920) and Master Wall sealant recommendations (Technical Bulletin MW-131-050101) for acceptable sealants.

## **PART 3 EXECUTION**

### **3.01 EXAMINATION**

- A. Prior to installation of the Uninsulated Finish (UF) System, the contractor shall verify that the substrate:
1. Is of a type listed in Section 1.04.C.1.
  2. Is flat within 6.4 mm (1/4 in) in a 3.05 m (10 ft) radius.
  3. Is sound, dry, connections are tight, has no surface voids, projections or other conditions that may interfere with the Uninsulated Finish (UF) System installation or performance.



B. Prior to the installation of the Uninsulated Finish (UF) System, the architect or general contractor shall insure that all needed flashings and other waterproofing details have been completed, if such completion is required prior to the Uninsulated Finish (UF) application. Additionally, the Contractor shall ensure that:

1. Metal roof flashing has been installed in accordance with Asphalt Roofing Manufacturers Association (ARMA) Standards.
2. Openings are flashed as necessary to prevent water penetration.
3. Chimneys, Balconies, and Decks have been properly flashed.
4. Windows, Doors, etc. are installed and flashed per manufacturer's requirements.

C. Prior to the installation of the Uninsulated Finish (UF) System, the contractor shall notify the general contractor, and/or architect, and/or owner of all discrepancies.

### 3.02 PREPARATION

A. The Uninsulated Finish (UF) materials shall be protected by permanent or temporary means from inclement weather and other sources of damage prior to, during, and following application until completely dry.

B. Protect adjoining work and property during Uninsulated Finish (UF) installation.

C. The substrate shall be prepared as to be free of foreign materials, such as, oil, dust, dirt, form release agents, efflorescence, paint, wax, water repellents, moisture, frost and any other condition that inhibit adhesion.

### 3.03 INSTALLATION

A. The system shall be installed in accordance with the current Master Wall Inc. Uninsulated Finish (UF) System Application Instructions.

B. The overall minimum base coat thickness shall be sufficient to fully embed the mesh.

C. Sealant shall not be applied directly to textured finishes.

D. When installing the Uninsulated Finish (UF) System, adhere according to Master Wall Inc. and local requirements.

E. High impact meshes shall be installed as specified at ground level, high traffic areas and other areas exposed to or susceptible to impact damage.

### 3.04 FIELD QUALITY CONTROL

A. The contractor shall be responsible for the proper application of the Uninsulated Finish (UF) materials.

B. Master Wall Inc. assumes no responsibility for on-site inspections or application of its products.

C. If required, the contractor shall certify in writing the quality of work performed relative to the substrate system, details, installation procedures, workmanship and as to the specific products used.

D. If required, the sealant contractor shall certify in writing that the sealant application is in accordance with the sealant manufacturer's and Master Wall Inc.'s recommendations.



### 3.05 CLEANING

A. All excess Uninsulated Finish (UF) System materials shall be removed from the job site by the contractor in accordance with contract provisions and as required by applicable law.

B. All surrounding areas, where the Uninsulated Finish (UF) System has been installed, shall be left free of debris and foreign substances resulting from the contractor's work.

### 3.06 PROTECTION

A. The Uninsulated Finish (UF) System shall be protected from inclement weather and other sources of damage until dry and permanent protection in the form of flashings, sealants, etc. are installed.

#### Disclaimer

This Specification is published for general informational purposes only and is not intended to imply that these are the only materials, procedures, or methods, which are available or suitable. Materials, procedures, or methods may vary according to the particular circumstances, local building code requirements, design conditions, or statutory and regulatory requirements. While the information in this specification is believed to be accurate and reliable, it is presented without guarantee or responsibility on the part of Master Wall Inc.

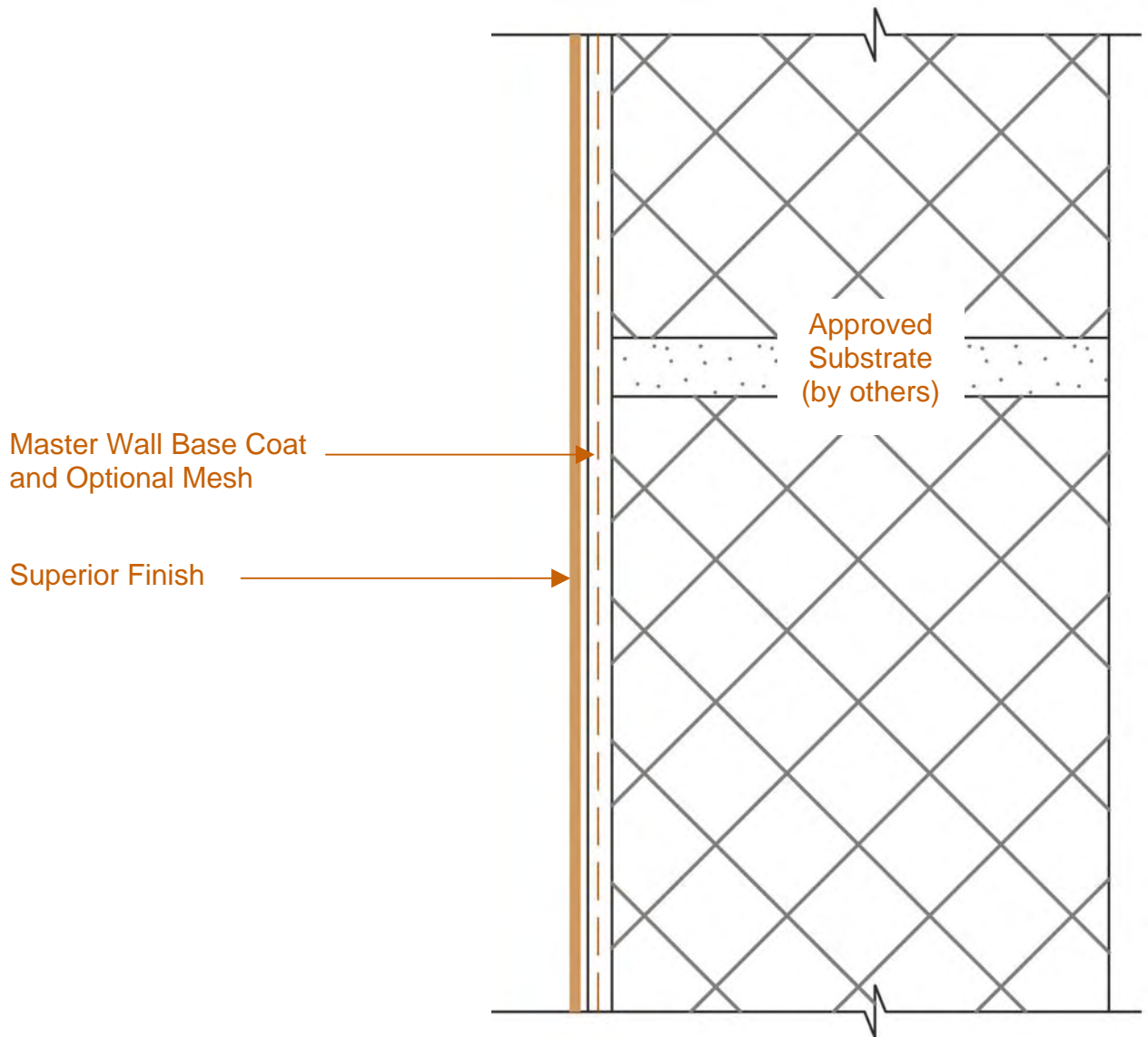


# Uninsulated Finish (UF) System

Conceptual Details

Corporate • P.O. Box 397 • Fortson • Georgia • 31808 • 800-755-0825 • FAX 706-569-6704

Technical • 800-760-2861 • FAX 734-433-0930



## UF-01 Cross-Section

These drawings relay the conceptual conditions of Master Wall Systems and are not the construction drawings. Ultimately the design and detailing of an entire wall system is the responsibility of a professional. These details will guide the design professional in the use of Master Wall Products. Master Wall disclaims design, warranty or construction intent or responsibility.

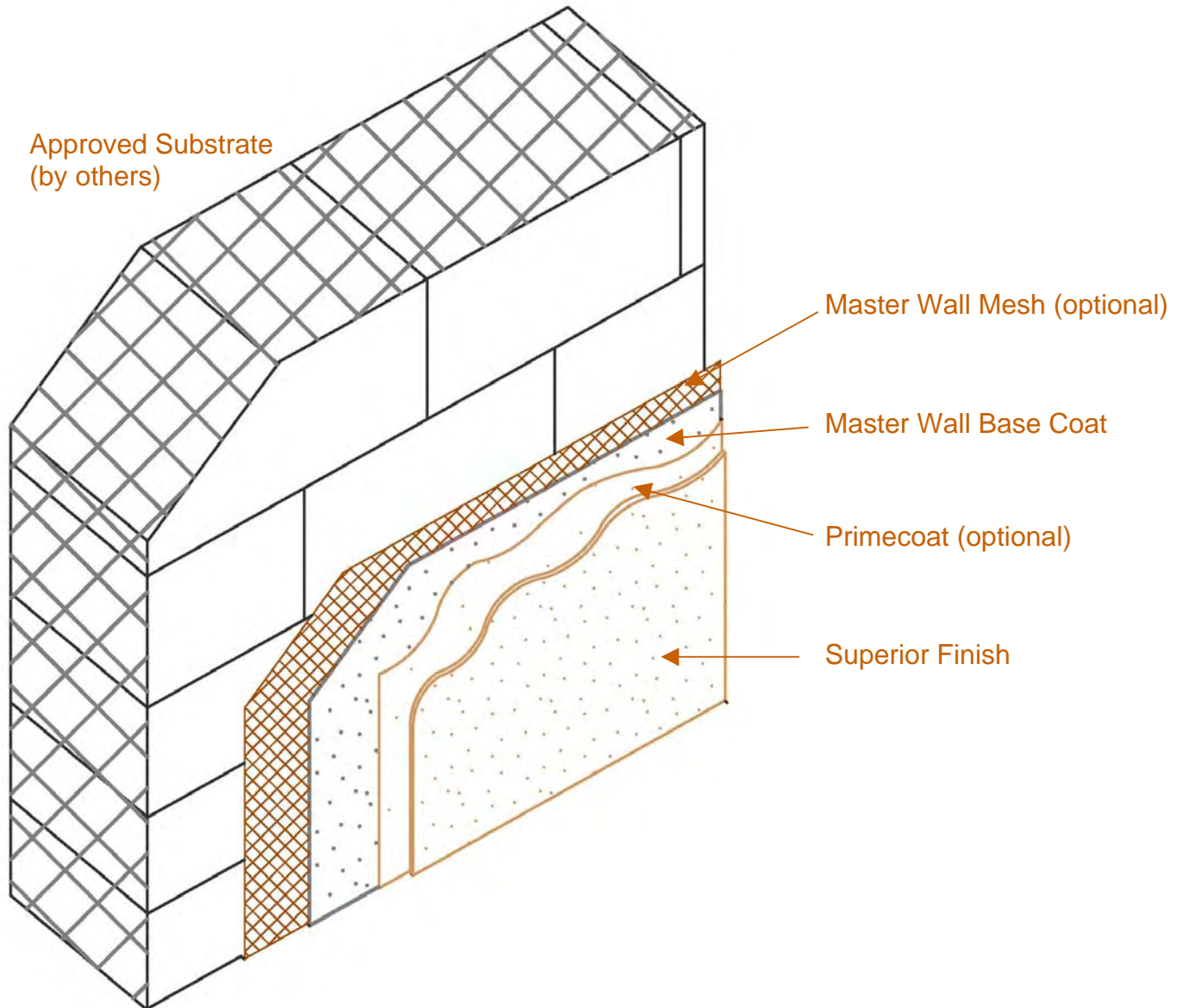


# Uninsulated Finish (UF) System

Conceptual Details

Corporate • P.O. Box 397 • Fortson • Georgia • 31808 • 800-755-0825 • FAX 706-569-6704

Technical • 800-760-2861 • FAX 734-433-0930



## UF-02 Cross-Section Isometric

These drawings relay the conceptual conditions of Master Wall Systems and are not the construction drawings. Ultimately the design and detailing of an entire wall system is the responsibility of a professional. These details will guide the design professional in the use of Master Wall Products. Master Wall disclaims design, warranty or construction intent or responsibility.



**Master Wall, Inc**  
**Building a Culture of Excellence**

# Uninsulated Finish (UF) System

## 5 Year Labor & Material Limited Warranty

Master Wall Inc. warrants the properly designed and installed Uninsulated Finish (UF) System and materials for 5 years from the date of installation. Master Wall Inc.'s exclusive liability under this warranty is to supply replacement materials and labor or corrective procedures, if it is shown that the materials supplied by Master Wall Inc., were defective when installed by the Master Wall Inc. certified applicator. Remedies shall be solely determined by Master Wall Inc. and no other warranties are expressed or implied. For a valid warranty, the system and products must be installed in accordance with Master Wall Inc.'s written recommendations, specifications, details, bulletins and other project-specific written recommendations. Master Wall Inc. must be notified in writing within 10 business days of the original discovery of the defect.

Master Wall Inc., is not responsible for structural conditions, design conditions beyond those noted in our literature, architecture, engineering or workmanship of any project. The Uninsulated Finish coatings/systems may have hairline cracks, spalling, fastener popping or efflorescence, which are not considered product defects. Materials must be properly stored and applied in a timely manner. Workmanship, aesthetics and installation are beyond the scope of this warranty as are any deviations from Master Wall Inc. Documents not specifically approved in writing.

Abuse, misuse, excessive weather or environmental conditions beyond what the products or systems have been tested, designed or approved for is expressly limited. Certain colors with organic pigments are less fade-resistant than others. The building, system and products must be properly maintained in accordance with Master Wall Inc., documents, local environmental conditions and good building practices. In no case is Master Wall Inc. responsible for incidental and consequential damages.

**This warranty becomes effective only when all bills for the components of the system have been paid.**

**Except as stated, Master Wall, Inc., expressly disclaims any warranty of merchantability or fitness for a particular purpose. The above remedies are to be deemed exclusive.**

Project:

Applicator:

Warranty Date: