



Travertine

Brilliant Fine Finish with Travertine Limestone Accents

Systems

Interior Applications
Exterior Applications over
Master Wall® Base Coats

VOC: <1% by Weight
VOC: 1.13 g/l
Manufacture Locations:
30058 • 84651

Options:

Vintage Top Coat
Metallic Cote Accent
Clearshield Top Coat

Packaging: 5 gallon
(19L) pail

Pail Weight: 60 lbs
(27.2 kg)

Shelf Life: 2 years

Coverage (estimated)

Two-Coat Application:
175-200 sf (16-18.6 sm)

Travertine finish recreates an intricate look of a plastered wall surface with the mottled hues of natural travertine limestone. The easily applied texture highlights wall surfaces with a very subtle glistening effect that would be perfect for home or upscale commercial projects.

- **Ready to Use**
- **Ultra thin applications (two thin coats)**
- **Cost effective**
- **Tintable, available in 12 standard colors**
- **Can be accented with Vintage, Clearshield or Metallic Cote**

Travertine
Natural Clay Color



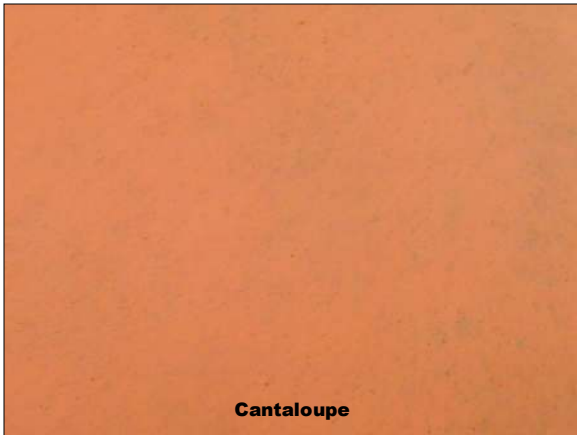
masterwall.com

PO Box 397 • Fortson • GA • 31808 • 800-755-0825 • Tech: 800-760-2861

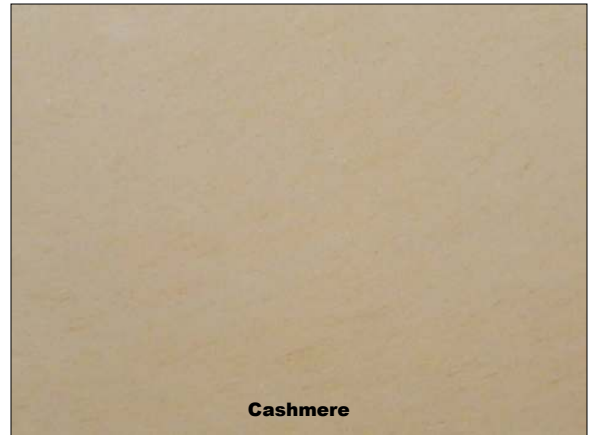


Travertine

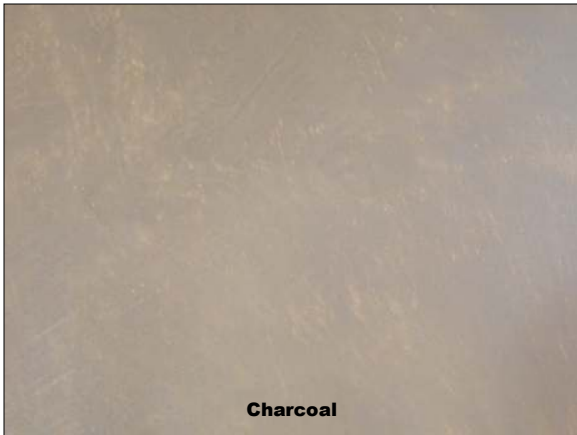
Brilliant Fine Finish with Travertine Limestone Accents



Cantaloupe



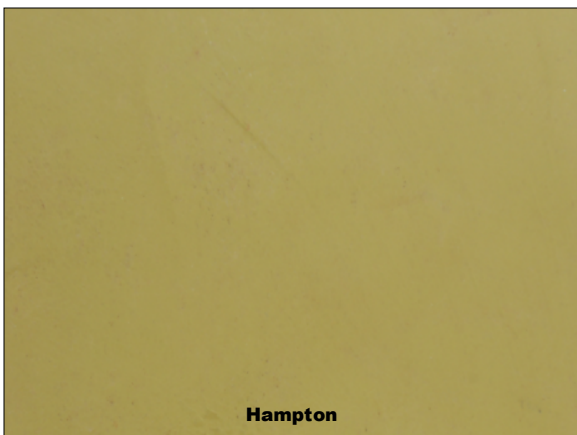
Cashmere



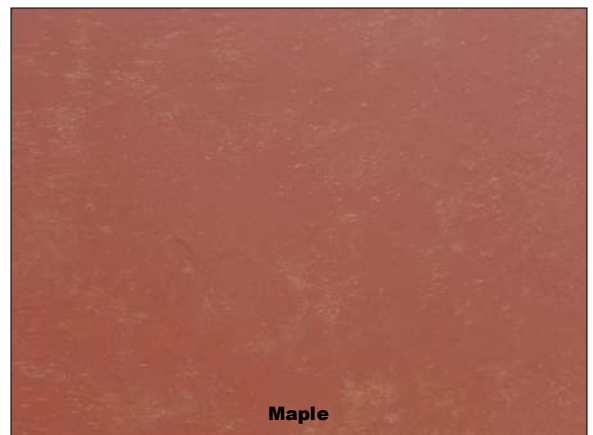
Charcoal



Cinnamon



Hampton



Maple



masterwall.com

PO Box 397 • Fortson • GA • 31808 • 800-755-0825 • Tech: 800-760-2861



Travertine

Brilliant Fine Finish with Travertine Limestone Accents



Natural Clay



Pearl White



Pebble



Ringwood



Sage



Winchester



masterwall.com

PO Box 397 • Fortson • GA • 31808 • 800-755-0825 • Tech: 800-760-2861



Travertine

Brilliant Fine Finish with Travertine Limestone Accents

Temp: 40°-110°F (5°-43°C) • Working Time: 1/2 hr • Dry Time: 24 hrs
at room temperature, working and drying time will vary with temperature and humidity

Application Procedure

Job Conditions – Air and surface temperatures must be 4°C (40°F) or higher and must remain so for a minimum of 24 hours. Avoid exposure to direct sunlight during application. Protect the finish from rain and temperatures less than 40°F (5° C) for a minimum of 24 hours.

Surface Preparation – **Interior Drywall:** smooth, flat and ready for paint. Clean the surface in preparation for Travertine. Prime wall with Primecoat Primer and allow to dry. **Exterior:** Master Wall® base coat shall be smooth and free of any mesh pattern.

Mixing – Open pail of Travertine and mix approximately one minute with a fixed wheel type paddle or equivalent mixing blade attached to a 1/2" (13 mm) heavy duty drill at 400-500 rpm. Small additions of water, up to 240 ml (8 oz.) per pail, may be added for workability as needed.

Application – Using a Wind-Lock T-VPF2008, T-VPF2411 or T-VPF2812 Stainless Steel Venetian Plaster Trowel apply a very tight, thin coat of Travertine to the surface free of trowel marks. Use moderate to high pressure with a trowel angle of about 60° to 80° to the wall surface. The amount of material applied to the wall surface is paper thin. Allow the Travertine to take up for 2-3 hours. Clean the surface to remove any dust.

Apply a paper-thin second coat of Travertine using short, random strokes. If increased mottling or a higher sheen is desired, burnish using a clean, dry trowel about 30-40 minutes after second application.

Note: Application problems occur when Travertine is applied too thick. Only paper thin applications are necessary.

Surface may be spray coated after 24 hours with Master Wall® Metallic Cote, Vintique and/or Clearshield if desired. Follow individual data sheet instructions for products selected.

Cautions and Limitations

- Travertine is not intended for deep depressions or irregular surfaces.
- Slope all exterior surfaces 1:2 minimum to shed water.
- Apply in paper thin applications, shrinkage, cracking or blistering can occur over 1/16" (1.6 mm) thick.
- Travertine is designed to be applied over a properly installed interior drywall.
- Not for use over any finishes or primers other than Primecoat.
- Application in direct sunlight may affect aesthetics if the Travertine dries too quickly. Avoid direct sunlight.
- Use of Clearshield sealer is recommended in high moisture or traffic areas.
- When cleaning do not use harsh or abrasive cleaners. Wash gently using a soap and water solution followed by a warm water rinse.

Approved Substrates

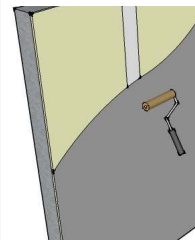
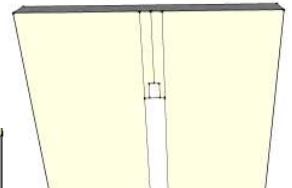
Interior Drywall
Master Wall Base Coats
Others approved in writing

Clean Up

Tools and equipment can be cleaned with soapy water while the Travertine is still wet.

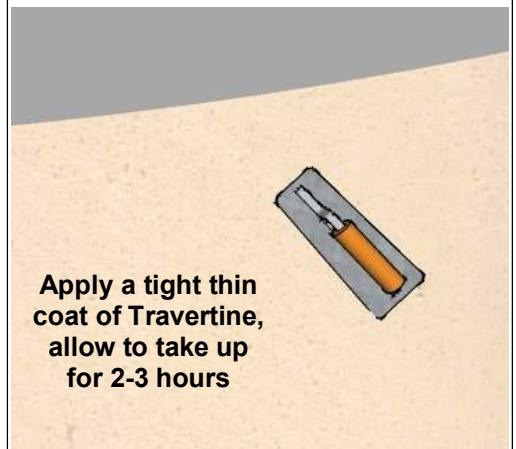
Interior Drywall

Make Drywall Ready for Paint

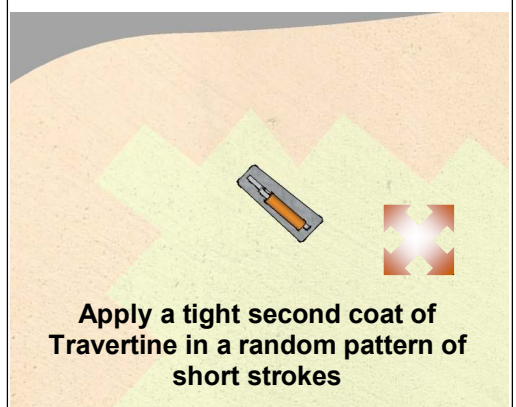


Apply Primecoat Primer to Wall

Finish Application



Apply a tight thin coat of Travertine, allow to take up for 2-3 hours



Apply a tight second coat of Travertine in a random pattern of short strokes

Information contained in this product data sheet conforms to the standard detail recommendations and specifications for the installation of Master Wall Inc.® products and is presented in good faith. Master Wall Inc.® assumes no liability, expressed or implied as to the architecture, engineering, or workmanship of any project. This information may be concurrent with, or superseded by other applicable documents, such as specifications and details. Contact Master Wall Inc.® for the most current product information. ©2016 Master Wall Inc.®

M Master Wall Inc.®
Building a Culture of Excellence
masterwall.com

PO Box 397 • Fortson • GA • 31808 • 800-755-0825 • Tech: 800-760-2861