



# Submittal Package

---

## Stucco Cement Board Coatings

*Project:*

*Location:*

*Architect:*

*General Contractor:*

*Applicator:*

### *Benefits of Master Wall*

- American owned and privately managed, our focus is the customer
- 20+ year track record, projects from coast to coast
- Quality products featuring 100% pure acrylic polymers
- Dedicated to the EIFS & Stucco Markets, it's **what** we do, not part of what our company does
- Experienced Staff—100+ years of experience
- Service—we provide it!
  - Job site visits
  - Color matching
  - Architectural Support
  - Samples
  - Plan, detail and technical reviews
- Dedicated to a culture of excellence

### *Submittal Information:*

- *System Data Sheets*
- *Product Data Sheets*
- *Specifications*
- *Details*
- *Sample Labor/Material Limited Warranty*

Manufactured by



P. O. Box 397  
Fortson, GA 31808  
800-755-0825  
Technical 800-760-2861  
[www.masterwall.com](http://www.masterwall.com)



09 93 63

# Stucco Cement Board Coatings

## Direct-Applied Exterior Finish System

Stucco Cement Board Coatings are applied over a high strength water managed ASTM C1325 or C1186 cement board. The application provides high impact and weather resistance where exterior insulation value is not required.

The cement board installs easily over approved framing and substrates using one of two methods:

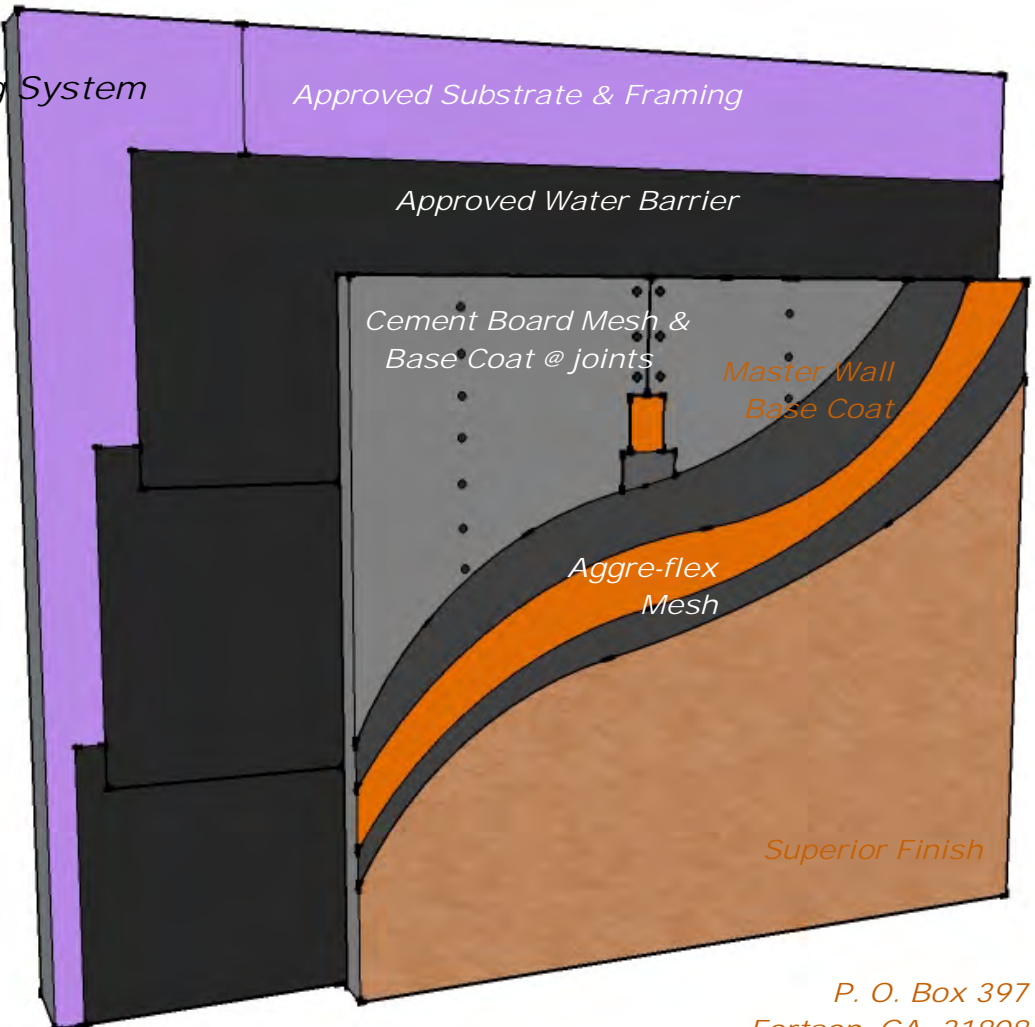
- Over an approved structural sheathing in conditioned northern or southern climates.
- Directly to structurally-controlled framing in southern climates (below 4000 Heating Degree Days) or unconditioned northern climates.

### Features & Benefits

- Easily Applied
- Durable Surfacing System
- Impact Resistant

**System Uses**

<b>C</b> Commercial	<b>R</b> Residential	 Drainage
------------------------	-------------------------	---



P. O. Box 397  
 Fortson, GA 31808  
 800-755-0825  
 Technical 800-760-2861  
 masterwall.com

### 1.0 General

This is a short form specification. Refer to Stucco Cement Board Coatings specifications and details for additional information.

#### 1.1 System Description

The Master Wall Stucco Cement Board Coatings consists of a reinforced base coat and textured finish applied over a cement board substrate meeting ASTM C-1325 such as National Gypsum PermaBase®, James Hardie Hardipanel® Smooth or USG Durock®.

#### 1.2 Design Requirements:

- A. Reference Master Wall suggested details and architectural drawings for specific detail requirements.
- B. Stucco Cement Board Coatings installed below the 4000 heating degree day line and unconditioned installations in northern climates may be applied directly to the framing/weather-resistive barrier.
- C. Slope all trim bands and surfaces a minimum of 1:2 (6" in 12") to shed water, maximum 12" (305mm) wide.
- D. Maximum deflection of substrates and framing shall not exceed L/360.
- E. Typical acceptable sheathings for structural or fire resistance include Dens Glass Gold® (ASTM C-1177), FiberRock® or exterior gypsum sheathing (ASTM C-79).
- F. A code-approved weather-resistive barrier is required over the framing or sheathing and before cement board application.
- G. Expansion joints are required at building expansion joints, panel joints, floor lines in wood framed construction, and other areas where significant movement occurs.
- H. Control joints are required to be located by the designer. Reference Master Wall specifications for specific recommendations.
- I. Detail and install trim accessories according to the approved trim manufacturer's requirements (Plastic Components, Vinyl Corp. or approved equal).

#### 1.3 Limitations:

- A. Cracking due to dimensional stress at board joints may appear in the finished exterior surface if control joints are not properly located for the regional climate conditions and structural movement. Cracking is not a warranty defect.
- B. Planar irregularities in framing may be more visible than with other applications.
- C. Secondary weather-resistive barrier is required under the cement board.

#### 1.3 Limitations (continued):

- D. Cement board manufacturer should be consulted for structural requirements.
- E. Depending upon framing and climate, some read-through of framing and/or fasteners may occur.
- F. Applications are limited to residential and low-rise commercial installations.

#### 1.4 Quality Assurance

- A. Coatings shall be tested for: Accelerated weathering, mildew resistance, salt spray resistance and structural performance.
- B. Coatings shall have been tested for fire performance in accordance with ASTM E-84.

#### 1.5 Job Conditions

- A. Store all materials protected from weather and direct sunlight at temperatures above 40°F (5°C).
- B. The ambient and wall temperature shall be a minimum of 40°F (5°C) and shall remain so for at least 24 hours after installation.

#### 2.0 Products

All components of the Stucco Cement Board Coatings shall be manufactured by Master Wall and supplied by an authorized distributor.

##### A. Master Wall Base Coats:

1. *F&M Plus*: A high-build 100% pure acrylic-based fiber reinforced adhesive that is field mixed with Portland cement.
2. *Foam & Mesh Adhesive (F&M)*: A 100% pure acrylic-based adhesive that is field mixed with Portland cement.
3. *Master Wall Bagged Base (MBB)*: A ready to use dry base that is field mixed with water.

##### B. *Aggre-flex Mesh*: Standard Mesh.

##### B. *Master Wall Cement Board Mesh*: Self adhesive light-weight mesh

##### C. *Superior Finish*: 100% pure acrylic formulation with integral color and texture. Perfect, Spray, Desert Sand, R-Coarse and Refinish textures.

##### D. Master Wall Coatings:

1. *Primecoat*: A water-based primer.
2. *Sanded Primecoat*: Sanded water-based primer.
3. *Roller-flex*: A water-based architectural finish coating.

#### 3.0 Installation

- A. Inspect the cement board to ensure that it is free of all foreign materials that would affect the adhesion of Master Wall products.
- B. Apply the products in strict accordance with Master Wall specifications, product data sheets, architectural drawings and architectural specifications.

See full specifications and  
details at [masterwall.com](http://masterwall.com)

# SUPERIOR *finishes*

*Integrally Colored Textured Acrylic Finishes*



*Perfect Texture*



*Spray Texture*



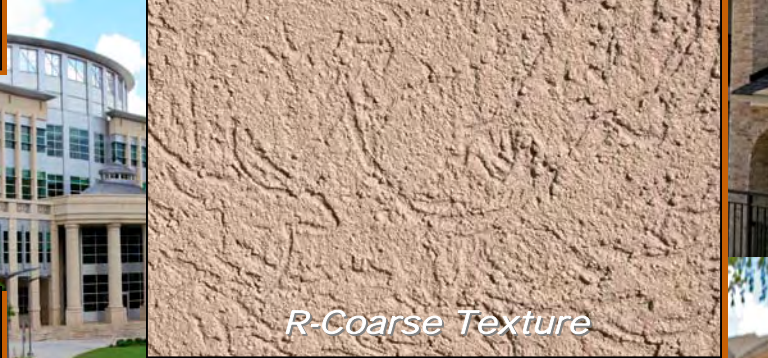
*Desert Sand Texture*



*R-Coarse Texture*



*Refinish Texture*



**M Master Wall Inc.**  
*Building a Culture of Excellence*



Superior Finish is Master Wall's textured finish line. Available in standard or custom colors, Superior Finishes may be applied over Master Wall Base Coats or prepared substrates including brick, masonry, concrete and stucco. Superior Finishes work great for interior applications as well. Superior Finish is available in five-gallon (19L) pails and is typically troweled onto the wall surface with a stainless steel trowel.

### Estimated Coverage

Perfect: 120-150 sf/pail (11-14 sm)  
 Spray SS: 215-225 sf/pail (20-21 sm)  
 Desert Sand SS: 130-150 sf/pail (12-14 sm)  
 R-Coarse: 90-120 sf/pail (8.4-11 sm)  
 Perfect West: 140-160 sf/pail (13-15 sm)  
 Refinish: Varies with Texture

Coverage will vary by application, applicator skill and substrate conditions. Master Wall assumes no responsibility nor liability for coverage.

### Finish Properties

Meets or Exceeds:  
 ASTM E84 Surface Burning  
 ASTM E108 Flame Spread  
 ASTM C67 Freeze/Thaw  
 ASTM E2485/2570 Freeze/Thaw  
 ASTM D2247/E2570 Humidity  
 ASTM D3273 Mold/Mildew  
 ASTM D968 Abrasion  
 ASTM B117 Salt Spray  
 ASTM G53 Weathering  
 ASTM G23/G154/G155 Weathering

### Approved Substrates

Master Wall Base Coats  
 Stucco  
 Prepared & Base Coated Surfaces of:  
 Brick  
 Concrete  
 Masonry  
 Others approved in writing

### Statistics

Pail Weight: 70 lbs (32 kg), Refinish 65 lbs (29.5 kg)

Working Time: 1/4 hour @ room temperature

Drying Time: 8-12 hours to set, 48-72 hours to dry @ room temperature. High pigment levels, low temperatures, high humidity extend dry times.

Application Range: 40°-110°F (5°-43°C)

Shelf Life: 2 years

### Application Procedure

**Job Conditions** - Air and substrate temperature for application of Superior Finishes must be 40°F (5°C) or higher and must remain 40°F (5°C) or higher for a minimum of 24 hours. Provide temporary protection to protect the wall system from damage until permanent flashings, caps and sealants are installed. Store materials within prescribed temperature limits and out of direct sunlight. High temperatures will reduce working times, Low temperatures and/or high humidity will extend working, set and dry times.

**Preparation** - The substrate must be approved by Master Wall Inc., clean, dry, structurally sound and free of efflorescence, oil, grease, form release agents and curing compounds or anything that would affect bond. Painted surfaces are not acceptable and must be removed. Concrete and surfaces should cure for a minimum of 28 days. Stucco should be cured until clean, dry and hard—typically 14 days.

Interior drywall should be finished and made ready for paint. Prime surfaces with Primecoat/Sanded Primecoat primer prior to finishing.

**Base Coats** - Must be flat, dry hard, and free of efflorescence. Master Wall base coats must cure a minimum of 12 hours before application of Superior Finish. Substrates of brick, masonry or concrete should be leveled smooth using either Master Wall base coats or stucco.

**Mixing** - Thoroughly stir Superior Finish using a heavy duty 1/2" drill at 400 - 500 rpm and a heavy duty mixing paddle. Small amounts of clean, potable water may be added to obtain a workable consistency. To avoid color variations, add the same amount of water to each pail. Do not exceed 24 ounces (0.7L) of water per pail of finish.

**Application** — Apply a uniform thickness (about 1/16") of Superior Finish to the substrate using a stainless steel trowel. Spread evenly and then scrape the finish coat down to a thickness no greater than the largest aggregate in the material. Immediately float the finish coat using a plastic float to the desired texture. Always maintain a wet edge to achieve uniformity of texture and color.

### For Professional Results

- Apply finish coats away from direct sunlight. Cold joints or color variations can occur if the finish dries too quickly.

- Consider priming stucco surfaces with Primecoat/Sanded Primecoat to even out finish absorption.
- Surfaces exposed to the weather must be sloped (6:12 minimum).
- Under certain conditions dark colors may show efflorescence on the surface during the cure process.
- Finishes are intended for the approved substrates listed above and should not be applied directly to gypsum board or insulation board products.

**Clean Up**—Tools and equipment can be cleaned with soapy water while the Superior Finish is still wet.

### Available Options



Elastomeric Additive



Silicone Additive



Excel Mildew Additive



**Master Wall Inc.**  
 Building a Culture of Excellence

P. O. Box 397  
 Fortson, GA 31808

800-755-0825

Technical 800-760-2861

masterwall.com

050111

Information contained in this product data sheet conforms to the standard detail recommendations and specifications for the installation of Master Wall Inc. products and is presented in good faith. Master Wall Inc. assumes no liability, expressed or implied as to the architecture, engineering, or workmanship of any project. This information may be concurrent with, or superseded by other applicable documents, such as specifications and details. Contact Master Wall Inc. for the most current product information.



# F&M Plus



*F&M Plus is the high-build version of our Foam & Mesh*

## High Build Foam & Mesh

**Adhesive & Base Coat**

*Adhesive (F&M) used in Master Wall Systems*

*or over prepared substrates. Fibered F&M Plus is available in five-gallon (19L) pails and is mixed 1:1 with Portland cement to a creamy consistency. F&M Plus trowels out smoothly with a stainless steel trowel to provide superior leveling capability up to 1/4" (6.4 mm) thickness.*

### **Application Procedure**

**Job Conditions** - Air and substrate temperature for application of *F&M Plus* must be 40°F (5°C) or higher and must remain 40°F (5°C) or higher for a minimum of 24 hours. Provide temporary protection to protect the wall system from damage until permanent flashings, caps and sealants are installed. Store materials within prescribed temperature limits and out of direct sunlight. Working and drying times are based upon normal room temperature conditions and will vary with temperature and humidity.

**Preparation** - The substrate must be approved by Master Wall Inc., clean, dry, structurally sound and free of efflorescence, oil, grease, form release agents and curing compounds or anything that would affect bond. Painted surfaces are not acceptable and must be removed.

**Mixing** - Thoroughly stir *F&M Plus* using a heavy duty 1/2" (12.7 mm) drill at 400 - 500 rpm and a heavy duty mixing paddle. Pour half of the stirred *F&M Plus* into a clean plastic pail. Add Type I or I-II Portland cement to the half pail of *F&M Plus* in a ratio of one-to-one by weight and mix to a homogenous consistency. Let the mixture stand for 3 to 5 minutes and then stir to a creamy consistency. Up to 30 ounces (0.9L) of clean, potable water may be added to a half pail to adjust workability. Do not over mix as faster setting or reduced working time can occur. Do not add accelerators or retarders to the *F&M Plus* mixture.

### **Application**

Adhesive application – Over gypsum substrates, apply the *F&M* mixture directly to the back of the insulation board using a 3/8"x3/8"x3/8" (9.5x9.5x9.5 mm) or a 3/8"x1/2"x1-1/2" (9.5x13x38 mm) stainless steel notched trowel. With the trowel at a 45° angle, cover the entire back of the insulation board with full beads of adhesive. Apply the adhesive so the ribbons run vertically when applied to the wall.

Over non-gypsum substrates, you may use the above described notched trowel method or the 'ribbon and dab' method. Using a stainless steel plastering trowel, apply a 2" (50.8 mm) wide by 3/8" (9.5 mm) high ribbon of the *F&M Plus* mixture around the entire perimeter of the insulation board. Place 8 dabs of the *F&M Plus* mixture 3/8" (9.5 mm) thick by 4" (102 mm) in diameter approximately 8" (204 mm) on center inside the ribbon.

Immediately place the prepared insulation board on the substrate. Make sure that all edges of the insulation board are abutted tightly and that no *F&M Plus* mixture gets into the board joints. Do not allow the *F&M Plus* mixture to form a skin prior to placing the insulation board on the substrate. Do not apply the *F&M Plus* mixture directly onto the substrate.

For base coat application – All imperfections in the insulation board must be rasped flush and any gaps in the insulation board must be filled with slivers of insulation. Apply the *F&M Plus* mixture over the entire surface of the insulation board or substrate in a thickness greater than that of the reinforcing fabric being used (approximately 1/16" (1.6 mm) for standard mesh and 3/32" (2.4 mm) for Ultra Mesh). Immediately embed the reinforcing fabric into the wet *F&M Plus* mixture and smooth from the center to the edge to avoid wrinkles. The reinforcing fabric must be continuous at all corners and lapped or abutted in accordance to Master Wall specifications. The color of the mesh shall not be visible but a slight mesh pattern may be visible.

### **Statistics**

#### **Coverage (Estimated/varies)**

- Adhesive & Standard Base: 120 sf (11 sm)
- Single Layer Mesh Only : 240-280 sf (22-26 sm)
- Double Layer Mesh Only: 80-230 sf (7.5-21 sm)
- Notched Trowel Only: 135 sf (12.5 sm)
- Pail Weight: 60 lbs (27kg)
- Working Time: 1 hour @ room temperature
- Drying Time: 12 hours @ room temperature
- Application Range: 40°-110°F (5°-43°C)
- Shelf Life: 2 years

**Clean Up**—Tools and equipment can be cleaned with soapy water while the *F&M Plus* is still wet.

### **Approved Substrates**

- Exterior gypsum sheathing (ASTM C79, C1177)
- Dens Glass Gold®
- GlasRoc®
- FiberBond®
- Gold Bond e<sup>2</sup>xp®
- Securock®
- Durock®
- PermaBase®
- Util-A-Crete®, ProTEC®, ProGUARD®
- Concrete
- Brick
- Masonry
- Metal Lath
- Others approved in writing



Information contained in this product data sheet conforms to the standard detail recommendations and specifications for the installation of Master Wall Inc. products and is presented in good faith. Master Wall Inc. assumes no liability, expressed or implied as to the architecture, engineering, or workmanship of any project. This information may be concurrent with, or superseded by other applicable documents, such as specifications and details. Contact Master Wall Inc. for the most current product information.

P. O. Box 397  
 Fortson, GA 31808  
 800-755-0825  
 Technical 800-760-2861  
[www.masterwall.com](http://www.masterwall.com)



# MBB Plus



Master Wall MBB Plus is a single-component polymer

## Master Wall Bagged Base

High Build Adhesive & Base Coat

modified high build dry bagged

base coat and adhesive that is mixed with water at time of use. Use MBB Plus in Master Wall Systems or over prepared substrates including brick, masonry, concrete and stucco. MBB Plus is freeze stable in dry form mixes to a creamy consistency.

### Approved Substrates

- Exterior gypsum sheathing (ASTM C79)
- Dens Glass Gold®
- GlasRoc®
- FiberBond®
- Gold Bond e<sup>2</sup>xp®
- Durock®
- PermaBase®
- Util-A-Crete®, ProTEC®, ProGUARD®
- Concrete
- Brick
- Masonry
- Metal Lath
- Others approved in writing

### Application Procedure

**Job Conditions** - Air and substrate temperature for application of MBB Plus must be 40°F (5°C) or higher and must remain 40°F (5°C) or higher for a minimum of 24 hours. Provide temporary protection to protect the wall system from damage until permanent flashings, caps and sealants are installed. Store materials within prescribed temperature limits and out of direct sunlight. Working and drying times are based upon normal room temperature conditions and will vary with thickness, temperature and humidity.

**Preparation** - The substrate must be approved by Master Wall Inc., clean, dry, structurally sound and free of efflorescence, oil, grease, form release agents and curing compounds or anything that would affect bond. Painted surfaces are not acceptable and must be removed.

**Mixing** - Add 5 to 6 quarts (4.7-5.7L) of potable water to a clean plastic pail. Add the MBB Plus slowly while stirring using a heavy-duty 1/2" (12.7 mm) drill at 400 - 500 rpm and a heavy-duty Mixer. Mix thoroughly to a homogenous consistency. Let the mixture stand for 3 to 5 minutes and then stir to a creamy consistency. Small amounts of clean, potable water may be added to obtain a workable consistency. Do not over mix. Excessive stirring may cause faster setting and reduced working time. Do not add accelerators or retarders to the MBB Plus mixture.

### Application

**Adhesive Application** - Over gypsum substrates, apply the F&M mixture directly to the back of the insulation board using a 3/8"x3/8"x3/8" (9.5x9.5x9.5 mm) or a 3/8"x1/2"x1-1/2" (9.5x13x38 mm) stainless steel notched trowel. With the trowel at a 45° angle, cover the entire back of the insulation board with full beads of adhesive. Apply the adhesive so the ribbons run vertically when applied to the wall.

**Masonry Substrates (non-drainage)** - Use the above described notched trowel method or the 'ribbon and dab' method. Using a stainless steel plastering trowel, apply a 2" (50.8 mm) wide by 3/8" (9.5 mm) high ribbon of the MBB Plus mixture around the entire perimeter of the insulation board. Place 8 dabs of the MBB Plus mixture 3/8" (9.5 mm) thick by 4" (102 mm) in diameter approximately 8" (204 mm) on center inside the ribbon.

Immediately place the prepared insulation board on the substrate. Make sure that all edges of the insulation board are abutted tightly and that no MBB Plus mixture gets into the board joints. Do not allow the MBB Plus mixture to form a skin prior to placing the insulation board on the substrate. Do not apply the MBB Plus mixture directly onto the substrate.

**Base Coat Application** - All imperfections in the insulation board must be rasped flush and any gaps in the insulation board must be filled with slivers of insulation. Apply the MBB Plus mixture over the entire surface of the insulation board or approved substrate in a thickness greater than that of the reinforcing fabric being used (approximately 1/16" (1.6 mm) for standard mesh and 3/32" (2.4 mm) for Ultra Mesh).

### Statistics

#### Coverage (Estimated/varies)

Adhesive & Standard Base: 50-60 sf (4.6-5.6 sm)

Single Layer Mesh Only : 100-125 sf (9-11.5 sm)

High Build (1/8"): 50-60 sf (4.6-5.6 sm)

Notched Trowel Only: 56 sf (5.2 sm)

Bag Weight: 50 lbs (22.7kg)

Working Time: 1 hour @ room temperature

Drying Time: 12 hours @ room temperature

Application Range: 40°-110°F (5°-43°C)

Shelf Life: 1 year

Immediately embed the reinforcing fabric into the wet MBB Plus mixture and smooth from the center to the edge to avoid wrinkles. The reinforcing fabric must be continuous at all corners and lapped or abutted in accordance to Master Wall specifications. The color of the mesh shall not be visible but a slight mesh pattern may be visible.

**Clean Up**—Tools and equipment can be cleaned with soapy water while the MBB Plus is still wet.



Information contained in this product data sheet conforms to the standard detail recommendations and specifications for the installation of Master Wall Inc. products and is presented in good faith. Master Wall Inc. assumes no liability, expressed or implied as to the architecture, engineering, or workmanship of any project. This information may be concurrent with, or superseded by other applicable documents, such as specifications and details. Contact Master Wall Inc. for the most current product information.

P. O. Box 397  
Fortson, GA 31808  
800-755-0825  
Technical 800-760-2861  
www.masterwall.com



# Aggre-flex Mesh



Master Wall Aggre-flex Mesh is a specially woven, **AR Glass Fiber** glass fiber mesh with AR Coating (Alkali Resistive). **Master Wall Systems**

Embedded in Master Wall base coats, Aggre-flex Mesh is the key impact and tensile component in Master Wall EIFS and wall systems. It can also improve crack resistance in Master Wall Stucco Systems or traditional stucco.

## General

### Mesh Properties

ASTM D76, D578, D579, D3659, D4029, D5035, E2098, E2486 MIL-Y-1140

Weave: Leno

Mesh	Weight	Roll Size	Tensile (warp/fill)	Coverage*
<b>Detail</b>	4.5 oz/sy (113 g/sm)	9.5" x 150' (96.5cm x 45.7m)	140/150	119 sf (11 sm)
<b>Standard</b>	4.5 oz/sy (113 g/sm)	38" x 150' (96.5cm x 45.7m)	140/150	475 sf (44.1 sm)
<b>Hi-Tech</b>	6.0 oz/sy (202 g/sm)	38" x 150' (96.5cm x 45.7m)	140/250	475 sf (44.1 sm)
<b>Medium</b>	12.0 oz/sy (313 g/sm)	38" x 75' (96.5cm x 22.8m)	300/500	238 sf (22.1 sm)
<b>Strong</b>	15.4 oz/sy (508 g/sm)	38" x 75' (96.5cm x 22.8m)	350/600	238 sf (22.1 sm)
<b>Ultra</b>	21.0 oz/sy (675 g/sm)	38" x 75' (96.5cm x 22.8m)	750/500	238 sf (22.1 sm)
<b>Corner Roll</b>	9.5 oz/sy (238 g/sm)	9.5" x 150' (96.5cm x 45.7m)	274/274	150 lf (45.7 m)

\*Allow about 10% waste for lapping all meshes (Strong, Ultra and Corner Roll Meshes are butted). Coverage will vary.

## Mesh Types

**Detail Mesh** – super soft, pliable mesh used for backwrapping, special shapes, and detail work.

**Standard Mesh** – Standard weight mesh for wall areas and general detailing.

**Hi-Tech Mesh** – Upgraded heavier weight version of *Standard Mesh* with good workability.

**Medium Mesh** – Extra tough heavy weight mesh. Best for areas of light traffic.

**Strong Mesh** – Great high traffic mesh where impacts are a consideration.

**Ultra Mesh** – Best where abuse is expected. Ultra heavy for high traffic areas.

*Strong Mesh and Ultra Mesh must be used in a two-layer system with Standard Mesh, Hi-Tech Mesh, or Medium Mesh.*

**Corner Roll**– For highly impact resistant corners. Apply under Standard or higher mesh.

## Application Procedure

**Job Conditions** - Air and substrate temperature for application of the *Reinforcing Mesh* must be 40°F (5°C) or higher and must remain 40°F (5°C) or higher for a minimum of 24 hours. Provide temporary protection at all times until the wall system, including flashings, caps, and sealants, is completed to provide protection from climatic conditions and other potential damage.

**Application** - All imperfections in the insulation board must be rasped flush and any gaps in the insulation board must be filled with slivers of insulation. Apply the base coat over the entire surface of the insulation board in a thickness greater than that of the *Reinforcing Mesh* being used, approximately 1/16" (1.6 mm) for Standard Mesh and 3/32" (2.4 mm) for Ultra Mesh. Immediately embed the *Aggre-flex Mesh* into the wet base coat and smooth from the center to the edge to avoid wrinkles. Lap all meshes except Strong Mesh and Ultra Mesh a minimum of 2-1/2" (63.5 mm) on all sides. The reinforcing fabric must be continuous at all corners and lapped or abutted in accordance to Master Wall specifications. The color of the mesh shall not be visible but a slight mesh pattern may be visible. The overall minimum thickness of the base coat should be a nominal 1/16" (1.6 mm) when dry.

When applying **Strong, Ultra or Corner Roll Mesh**, tightly abut all edges and let cure for a minimum of 12 hours. Grind any imperfections with the edge of a stainless steel trowel or grinding stone, taking care not to damage the *Aggre-flex Mesh*, and apply a layer of **Standard Mesh, Hi-Tech Mesh, or Medium Mesh** as per the directions in the preceding paragraph. To minimize wall variations, the lap of the second mesh layer should not coincide with the abutment of the first layer.

### Special Conditions and Recommendations

Apply backwrapping mesh or other approved accessory at all terminations of the insulation board. This includes at the top and bottom of all walls and at all openings.

*Aggre-flex Mesh* may be wrapped from the face of the insulation board onto a foundation or onto the studs of an opening on barrier wall systems. In all cases, the exposed edges of the insulation board must be wrapped with *Aggre-flex Mesh* and base coat or an approved accessory trim.

### Impact ASTM E2486 (Formerly EIMA 101.86)

Standard Mesh	Medium Impact Resistance	50-89 in-lbs (5.7-10.1J)
Hi Tech Mesh	Medium Impact Resistance	50-89 in-lbs (5.7-10.1J)
Medium Mesh	Medium Impact Resistance	50-89 in-lbs (5.7-10.1J)
Medium & Standard	High Impact Resistance	90-150 in-lbs (10.2-17.0J)
Strong & Standard	High Impact Resistance	90-150 in-lbs (10.2-17.0J)
Ultra & Standard	Ultra High Impact Resistance	150+ in-lbs (over17.0J)



Information contained in this product data sheet conforms to the standard detail recommendations and specifications for the installation of Master Wall Inc. products and is presented in good faith. Master Wall Inc. assumes no liability, expressed or implied as to the architecture, engineering, or workmanship of any project. This information may be concurrent with, or superseded by other applicable documents, such as specifications and details. Contact Master Wall Inc. for the most current product information.

P. O. Box 397  
Fortson, GA 31808  
800-755-0825  
Technical 800-760-2861  
masterwall.com



# Cement Board Mesh



*Master Wall Cement Board Mesh is a self-adhesive lightweight woven, glass fiber mesh that is specially coated for compatibility with Master Wall Base Coats. The 3" (76 mm) wide mesh is used as the first reinforcing layer in the Stucco Cement Board Coating application.*

## Lightweight Mesh With Adhesive Coating

### Mesh Properties

ASTM C474

ASTM C475

Weave: 8x8

### Widths & Packaging

3" x 150' (76 mm x 45.7 m)

Coverage Estimate (4x8 sheets)

Square Footage x 0.37 = linear feet of mesh

(coverage is not guaranteed)

### Application Procedure

**General**—The substrate must be clean, dry, structurally sound and free of efflorescence, oil, grease, form release agents and curing compounds. Painted surfaces are not acceptable and the paint must be removed.

**Job Conditions** - Air and substrate temperature for application of the *Cement Board Mesh* must be 40°F (5°C) or higher and must remain 40°F (5°C) or higher for a minimum of 24 hours.

**Temporary Protection** – Must be provided at all times until the wall system, including flashings, caps, and sealants, is completed to provide protection from climatic conditions and other potential damage.

**Installation** – Apply *Cement Board Mesh* according to Master Wall Specifications. In general, *Cement Board Mesh* is centered on the cement board joints and corners before the first application of base coat at the joints. Alternatively the mesh can be embedded into wet base coat at these locations. See the *Stucco Cement Board Coatings* specifications and details for specific instructions. Lap *Cement Board Mesh* a minimum of 2-1/2" (63.5 mm).

### **Limitations**

*Cement Board Mesh* is not intended for use as the exterior or primary reinforcement of any Master Wall System.



**Master Wall Inc.**  
Building a Culture of Excellence

P. O. Box 397

Fortson, GA 31808

800-755-0825

Technical 800-760-2861

[www.masterwall.com](http://www.masterwall.com)

Information contained in this product data sheet conforms to the standard detail recommendations and specifications for the installation of Master Wall Inc. products and is presented in good faith. Master Wall Inc. assumes no liability, expressed or implied as to the architecture, engineering, or workmanship of any project. This information may be concurrent with, or superseded by other applicable documents, such as specifications and details. Contact Master Wall Inc. for the most current product information.



Section 09 97 26

Corporate • P.O. Box 397 • Fortson • Georgia • 31808 • 800-755-0825 • FAX 706-569-6704

Technical • 800-760-2861 • FAX 734-433-0930

Part 1 General

1.01 GENERAL

- A. The Master Wall Stucco Cement Board Coatings are a decorative coating applied over approved cement board substrates.
- B. Drainage cavities may be incorporated into this design.

1.02 SCOPE OF WORK

- A. Provide all materials, labor, and equipment to install the Field Applied and/or Panelized Master Wall Stucco Cement Board Coatings.
- B. Related Sections:
  - 1. Concrete 03300
  - 2. Unit Masonry 04200
  - 3. Light Gauge Steel Framing 05400
  - 4. Sheathing 06100
  - 5. Sheet Metal Flashing and Trim 07620
  - 6. Sealants 07900
  - 7. Doors and Windows 08000

1.03 TERMS / DEFINITIONS

- A. Applicator – The contractor that applies the Stucco Cement Board Coatings.
- B. Base Coat – The material applied to the face of the sheathing and reinforced with one or more layers of mesh to function as the exterior weather barrier.
- C. Base Coat Mixture – A field mixed blend of base coat and Portland cement.
- D. Building Expansion Joint – A joint through the entire building structure designed to accommodate structural movement.
- E. Control Joint – A trim piece designed to control the thermal/structural movement within the cement board and to minimize cracking.
- F. Designer – The person or firm that is responsible to create the plans and specifications for the entire project.
- G. Expansion Joint – A designed joint in the continuity of a material, assembly, or system, designed to accommodate movement.
- H. Finish Coat – An acrylic based, factory mixed decorative and protective coating that is applied to the base coat.
- I. Reinforcing Mesh – Balanced, open weave, basic glass fiber mesh(es) supplied by the manufacturer of the Stucco Cement Board Coatings, treated for compatibility with other materials of the system, which functions to strengthen the system and adds impact resistance.
- J. Mechanical Fastener – Rust resistant fasteners utilized to fasten the sheathing.
- K. Sheathing – A primary material to which the stucco cement board is attached to or through.
- L. Stucco Cement Board – An approved cementitious board meeting ASTM C-1325.
- M. Substrate – The fully attached Stucco Cement Board that Master Wall materials are applied.



## 1.04 QUALITY ASSURANCE

### A. Design and Detailing

#### 1. General

- a. Master Wall Inc.'s current published details, specifications, data sheets, technical bulletins and other literature/information are minimum standards and guidelines that shall be followed when designing and detailing a project with the Master Wall Stucco Cement Board Coatings.
- b. Details shall conform to Master Wall Inc.'s details and shall be consistent with the project requirements.
- c. Structural designs and capacities are limited to and the responsibility of the respective cement board manufacturer.
- d. Sheathing is required for conditioned northern climates and where necessary for structural concerns in all climates. Non-conditioned northern climates (above the 4000 heating degree day line) and southern climates may not require sheathing. Designer to determine the necessity and use of the sheathing.
- e. Cracking due to dimensional stress at board joints may appear in the finished exterior surface.
- f. Planar irregularities in framing may be more visible than with other applications.
- g. Cement board manufacturer should be consulted for structural requirements.
- h. A secondary weather-resistive barrier is required under the cement board.
- i. Depending upon framing and climate, some read-through of framing and/or fasteners may occur.
- j. Applications are limited to residential and low-rise commercial installations.
- k. Master Wall Inc. must approve deviations from the standard published details in writing.
- l. The architect, engineer or the designer of the project should determine where the dew point would occur in relationship to the wall assembly and the project location during summer and winter conditions.
- m. Proper fastener spacing of the approved sheathing shall be strictly adhered to. Reference sheathing manufacturer and local code recommendations for proper fastener spacing.
- n. When the outside temperatures differ considerably from the building's interior temperature, airborne dirt can accumulate on colder regions of walls causing "shadowing" or "spotting", particularly over fasteners and framing. This is not considered a failure of the system or the Master Wall materials.
- o. The minimum slope of inclined surfaces shall not be less than 6" in 12" with a maximum length of 12" unless approved in writing by Master Wall Inc. Inclined surfaces which are or could be defined as roofs by the building codes or application are not approved by Master Wall Inc.
- p. The Stucco Cement Board Coatings shall not be used on parapet caps.



Section 09 97 26

Corporate • P.O. Box 397 • Fortson • Georgia • 31808 • 800-755-0825 • FAX 706-569-6704  
Technical • 800-760-2861 • FAX 734-433-0930

- q. It is the responsibility of the architect and the purchaser to determine if a product is suitable for their intended use. The architect or designer of the project shall be responsible for all decisions pertaining to the design, details, structural capability, attachment details, shop drawings and the like. Master Wall Inc. has prepared specifications, details and data sheets to assist as guidelines for the use and installation of the products. Master Wall Inc. is not responsible for the design, details, structural capability, attachment details and shop drawings whether it is based on Master Wall Inc.'s information or not.
2. Weather Resistive Barrier
- a. Code approved weather resistive barrier shall be installed over framing on all exterior walls before application of the cement board begins.
  - b. Do not use a vapor barrier (i.e. plastic sheet) on the exterior wall behind the exterior sheathing.
  - c. Weather resistive barrier shall be installed horizontally with upper layers overlapping lower layers a minimum of 2" (51 mm). Vertical joints shall overlap a minimum of 6" (152 mm).
  - d. Wrap weather resistive barrier into rough openings at windows, doors, mechanical equipment, and any other openings through the system. Reference Master Wall Inc.'s details.
  - e. Lap weather resistive barrier over attachment flange of drainage track a minimum of 2" (51 mm).
  - f. Alternatively, Master Wall *Rollershield* may be used as the water barrier over approved substrates.
3. Acceptable drainage mat materials for Stucco Cement Board Coatings shall be:
- a. Colbond<sup>®</sup> (Enka<sup>®</sup>) drainage mats as defined in Master Wall Technical Bulletin #126.
  - b. Benjamin Obdyke<sup>®</sup> Homeslicker<sup>®</sup> drainage mat.  
Install drainage mat materials in accordance with manufacturer's details and/or accepted industry practices.
4. Sheathing & Stucco Cement Board
- a. The maximum deflection under full flexural design loads of the substrate system shall not exceed L/360.
  - b. Acceptable sheathings for the Stucco Cement Board Coatings shall be designed for their intended use by the design professional.
  - c. Since the surface of the sheathing and stucco cement board cannot be rasped smooth, the flatness and finished appearance of the Stucco Cement Board Coatings application will depend on the structural members that support the sheathing.
  - d. The project architect or engineer shall engineer the framing, sheathing and stucco cement board with regard to the required structural performance.



Section 09 97 26

Corporate • P.O. Box 397 • Fortson • Georgia • 31808 • 800-755-0825 • FAX 706-569-6704

Technical • 800-760-2861 • FAX 734-433-0930

5. Expansion Joints

a. Expansion joints in the system are required at building expansion joints, at prefabricated panel joints, where substrates change, at floor lines in wood framed construction, and where structural movement is anticipated. Reference construction documents for specific locations.

b. Double studs may be required to accommodate expansion joints or where it is needed to provide a fastening base for sheathing and stucco cement board joints.

6. Control Joints

a. Control joints are required and located by the designer in the stucco cement board at the following locations: (Reference construction documents for specific locations).

1) Shall not exceed 20 lineal feet in any direction.

2) 160 square feet equals maximum overall area.

3) One dimension shall not exceed 2 ½ times the other dimension.

4) At all dissimilar substrate transitions.

b. Double studs may be required to accommodate control joints or where it is needed to provide a fastening base for sheathing board joints.

7. Sealants

a. Sealants and backer rod, as required at expansion joints and dissimilar substrates, shall provide a complete watertight system.

b. The sealants in a Stucco Cement Board Coatings expansion joint, or any sealant joint that anticipates significant movement, shall be bonded to the casing bead, stucco cement board or the reinforced base coat, not the finish coat. The color of the mesh shall not be visible and the texture of the mesh shall not be exposed within base coat at these locations.

8. Flashings

a. Roof

1) Crickets and step flashing shall be properly installed around chimneys.

2) Flashing shall be installed at rooflines in a manner to prevent any intrusion of water behind the weather barrier. This shall include the use of roof kick-out flashing at roof terminations.

b. Openings

1) Heads, jambs, and sills of all rough openings must be wrapped with the weather resistive barrier prior to installation of windows, doors, or mechanical equipment.

2) Local building codes may require use of self-sealing flashing tape on the sills.

3) Drainage track and metal flashing shall be installed at heads of openings.

4) Continuous metal flashing shall be installed at heads of ganged windows.

c. Decks

1) The system must be terminated at least 2" (51 mm) above poured decks, patios, sidewalks, etc.

2) Wooden decks must be flashed before system is installed.



Section 09 97 26

Corporate • P.O. Box 397 • Fortson • Georgia • 31808 • 800-755-0825 • FAX 706-569-6704  
Technical • 800-760-2861 • FAX 734-433-0930

9. Penetrations

- a. All penetrations through the system such as hose bibs, dryer vents, lighting fixtures, air-conditioning hoses, etc. must be properly sealed to insure the integrity of the system.

B. Qualifications

1. The Coatings Manufacturer shall have manufactured similar products and formulations in the United States for at least 10 years.
2. The Applicator shall be knowledgeable in the proper installation of the Stucco Cement Board Coatings.
3. The Applicator shall have demonstrated the ability to install the system on projects of similar size and complexity.
4. The Applicator shall provide the proper equipment, manpower and supervision on the job site to install the system in compliance with project plans and specifications.
5. The Stucco Cement Board Manufacturer shall be approved by Master Wall Inc.
6. The sealant contractor shall be experienced in the installation of high performance industrial and commercial sealants.
7. Prior to the installation of the Master Wall Stucco Cement Board Coatings, erect sample wall mock-up using materials and joint details required for final work. Provide special features as directed for sealant and contiguous work. Build mock-up at the site where directed of full thickness, indicating the proposed color, texture, and workmanship to be expected in the completed work. Obtain architect's acceptance of the mock-up in regard to aesthetic quality before start of work. Retain mock-up during construction as a standard for judging completed work. Do not alter, move, or destroy mock-up until work is completed, and until final acceptance of the project by architect.

1.05 SUBMITTALS

- A. The Applicator shall submit a list of completed projects of like size and complexity.
- B. The Applicator shall submit a certificate of training indicating that they have been given instructions on the proper installation of the Stucco Cement Board Coatings.
- C. The Applicator shall submit Stucco Cement Board Coatings Manufacturer's current literature, brochures, specifications, and details.
- D. The Applicator shall submit sufficient samples of each finish texture and color selected. The samples shall be prepared with the same tools and techniques required for the actual project. Color and texture should be approved based on the job site mock-up samples.
- E. The Applicator shall provide any shop drawings that may be applicable to the project for approval by the project architect.



#### 1.06 DELIVERY, STORAGE AND HANDLING

- A. Deliver all materials in original unopened packages with labels intact. Verify all quantities, colors, and textures against bill of lading.
- B. Store all materials protected from direct exposure to weather conditions and at temperatures not less than 40° F (5° C) or greater than 110°F (43° C).
- C. Material safety data sheets (MSDS) shall be supplied for the components of the Stucco Cement Board Coatings and be available at the job site.

#### 1.07 JOB CONDITIONS

- A. Ambient air temperatures shall be 40° F (5° C) or greater and rising at the time of installation of the Master Wall Inc. products and shall remain at 40° F (5° C) or greater for at least 24 hours after application.
- B. Provide supplemental heat and protection as required when the temperature and conditions are not in accordance with installation requirements. Sufficient ventilation and time shall be provided to ensure that materials have sufficiently dried prior to removing supplemental heat.
- C. Adequate protection shall be provided to prevent weather conditions (humidity, temperature, and precipitation) from having an affect on the curing or drying time of Master Wall Inc. materials.
- D. Adjacent materials and the Stucco Cement Board Coatings shall be protected during installation and while curing from weather and shall be protected from site damage.
- E. Coordinate installation of the Master Wall Stucco Cement Board Coatings with related work specified in other sections to ensure that the wall assembly is protected to prevent water from getting behind the weather barrier. The cap flashing shall be installed as soon as possible after the finish coat has been applied. When this is not possible, temporary protection shall be provided immediately in this area.
- F. All sealants shall be installed in a timely manner. Protect open joints from water intrusion during construction with backer rod, or temporary covering, until permanently sealed.
- G. Sufficient manpower and equipment shall be employed to ensure a continuous operation, free of cold joints, scaffolding lines, texture variations, etc.

#### 1.08 REPAIR AND MAINTENANCE

- A. Refer to Master Wall Inc. specific repair and maintenance procedures.
- B. Sealants and flashings shall be inspected annually to verify that the products are not allowing water intrusion behind the weather barrier. If sealant and/or flashings are allowing water intrusion behind the weather barrier, repairs should be made immediately.

#### 1.09 LIMITED MATERIALS WARRANTY

- A. A Limited Materials Warranty shall be issued upon the receipt of a properly completed warranty request form.



## PART 2 PRODUCTS

### 2.01 GENERAL

A. All components of the Master Wall Stucco Cement Board Coatings shall be obtained from Master Wall Inc. or its authorized distributors. No substitutions of, or additions of, other materials shall be submitted without prior written permission from Master Wall Inc. Substitutions or additions will void the warranty.

### 2.02 MATERIALS

A. **Weather Resistive Barrier (by others)**

1. **The weather resistive barrier shall comply with local building code requirements. Shall be a minimum 15 # felt or a product recognized by the local jurisdictional building authority as a weather resistive barrier equivalent.**

B. Drainage Track

1. Drainage track properly sized to the Stucco Cement Board and manufactured by Vinyl Corp., Plastic Components, or approved equal shall be used, if needed, in accordance with Master Wall Inc. details.

C. Casing Bead

1. Casing bead properly sized to the Stucco Cement Board and manufactured by Vinyl Corp., Plastic Components, or approved equal shall be used, if needed, in accordance with Master Wall Inc. details.

D. Mechanical Fasteners

1. A rust resistant fastener approved by the Stucco Cement Board manufacturer shall be used to properly fasten the sheathing. The appropriate fastener shall be used to meet the requirements of the specific project, local building code and the anticipated wind loads.

E. Sheathing & Cement Board Stucco

1. Sheathing: Applied over framing and may be designed to satisfy structural requirements or fire-resistive construction. Exterior gypsum sheathing (ASTM C-79, Dens Glass Gold, Exposure 1 or exterior plywood (grade C-D or better), Exposure 1 Oriented Strand Board (OSB).
2. Stucco Cement Board: Cementitious panels meeting ASTM C-1325. National Gypsum PermaBase (1/2" min.), USG Durock (1/2" min.), James Hardie Hardiepanel Smooth (5/16") or approved equal.

F. Reinforcing Mesh

1. Cement Board Mesh – Open weave glass fiber fabric, treated for alkaline resistance and compatibility with Master Wall Base Coats.
2. Standard Mesh – nominal 4.5 oz./sq. yd. open weave glass fiber fabric, treated for alkaline resistance and compatibility with Master Wall Base Coats, and conforming to ASTM D-76, D-579, D-5035, and MIL-Y-1140.



G. Base Coats

1. F & M Plus: An acrylic-based product mixed one-to-one by weight with Portland cement designed for use with reinforcing mesh as the base coating over the approved sheathing board. (Because the stucco cement board cannot be rasped to a level surface, F & M Plus is recommended for use as the base coat in the Master Wall Stucco Cement Board Coatings.)
2. Foam & Mesh (F&M) Adhesive: An acrylic-based product mixed one-to-one by weight with Portland cement designed for use with reinforcing mesh as the base coating over the Stucco Cement Board.
3. Bagged Base Coat (MBB): A polymer based cementitious product mixed with 5 to 6 quarts of water for use as a base coating over the Stucco Cement Board.

H. Water Resistant Base Coat

1. Guardian – An acrylic-based product mixed one-to-one by weight with Portland cement for use as a base coat with reinforcing mesh over sheathing board. (This product should be used as designated on the construction drawings where additional resistance to moisture is needed, i.e. sloped surfaces.)

I. Primer – Optional to enhance appearance and performance

1. Primecoat as manufactured by Master Wall.

J. Special Shapes: Moldings, cornices, quoins, etc. manufactured by others or formed out of Aggre-flex Insulation Board. All shapes must be reinforced with Base Coat and Reinforcing Mesh.

K. Finish: Master Wall Inc.'s "Superior" Finishes are acrylic-based wall coatings available in a variety of colors and textures. The following textures are available:

1. Perfect - riled texture
2. Spray – sand type texture
3. R-Coarse – coarse riled texture
4. Desert Sand – coarse sand texture
5. Refinish – fine texture used to create numerous finishes
6. Aggre-flex Superior Stone Finish – clear acrylic matrix filled with colored ceramic beads

*Note: The above textures excluding Aggre-flex Superior Stone Finish are also available in the Aggre-flex Superior Silicone Coat product line, the Aggre-flex Superior Elastomeric Coat product line, and the Aggre-flex Superior Excel Finish Coat product line. Aggre-flex Superior Silicone Coat combines acrylic and the siloxane polymers to provide the maximum resistance to moisture. Aggre-flex Superior Elastomeric Coat utilizes elastomeric polymers to enable the finishes to bridge minor cracking. Aggre-flex Superior Excel Finish Coat provides additional protection from mildew and algae.*

L. Water: Shall be clear, clean and potable without any foreign matter in the solution that may affect the color and setting qualities of the cement, base or finish coat.



M. Cement: Type I or I-II Portland cement meeting ASTM C-150.

N. Sealants Systems:

1. Sealants: Reference sealant section (07920) and manufacturer for approved sealants and installation methods.

## PART 3 EXECUTION

### 3.01 EXAMINATION

A. Prior to installation of the Stucco Cement Board Coatings, the contractor shall verify that the substrate and water barrier:

1. Is of a type listed in this specification.
2. Is installed to shed water in accordance with this specification.
3. Is flat within 6.4 mm (1/4 in) in a 3 m (10 ft) radius.
4. Is sound, dry, connections are tight, has no surface voids, projections or other conditions that may interfere with the Stucco Cement Board Coatings installation or performance.

B. Prior to the installation of the Stucco Cement Board Coatings, the architect or general contractor shall insure that all needed flashings and other waterproofing details have been completed, if such completion is required prior to the coatings application. Additionally, the Contractor shall ensure that:

1. Metal roof flashing has been installed in accordance with Asphalt Roofing Manufacturers Association (ARMA) Standards.
2. Openings are flashed in accordance with the Stucco Cement Board Coatings Installation Details or as otherwise necessary to prevent water penetration.
3. Chimneys, Balconies, and Decks have been properly flashed.
4. Windows, Doors, etc. are installed and flashed per manufacturer's requirements and the Stucco Cement Board Coatings Installation Details.

C. Prior to the installation of the Stucco Cement Board Coatings, the contractor shall notify the general contractor, and/or architect, and/or owner of all discrepancies.

### 3.02 PREPARATION

A. The Stucco Cement Board Coating materials shall be protected by permanent or temporary means from inclement weather and other sources of damage prior to, during, and following application until completely dry.

B. Protect adjoining work and property during Stucco Cement Board Coating installation.

C. The substrate shall be prepared as to be free of foreign materials, such as, oil, dust, dirt, form release agents, efflorescence, paint, wax, water repellents, moisture, frost and any other condition that inhibit adhesion.



### 3.03 INSTALLATION

- A. The system shall be installed in accordance with the current Master Wall Inc. Stucco Cement Board Coatings Application Instructions.
- B. The overall minimum base coat thickness shall be sufficient to fully embed the mesh.
- C. Sealant shall not be applied directly to textured finishes.

### 3.04 FIELD QUALITY CONTROL

- A. The contractor shall be responsible for the proper application of the Stucco Cement Board Coating materials.
- B. Master Wall Inc. assumes no responsibility for on-site inspections or application of its products.
- C. If required, the contractor shall certify in writing the quality of work performed relative to the substrate system, details, installation procedures, workmanship and as to the specific products used.
- D. If required, the EPS supplier shall certify in writing that the EPS meets Master Wall Inc.'s specifications.
- E. If required, the sealant contractor shall certify in writing that the sealant application is in accordance with the sealant manufacturer's and Master Wall Inc.'s recommendations.

### 3.05 CLEANING

- A. All excess Stucco Cement Board Coating materials shall be removed from the job site by the contractor in accordance with contract provisions and as required by applicable law.
- B. All surrounding areas, where the Stucco Cement Board Coatings has been installed, shall be left free of debris and foreign substances resulting from the contractor's work.

### 3.06 PROTECTION

- A. The Stucco Cement Board Coatings shall be protected from inclement weather and other sources of damage until dry and permanent protection in the form of flashings, sealants, etc. are installed.

#### Disclaimer

This Specification is published for general informational purposes only and is not intended to imply that these are the only materials, procedures, or methods, which are available or suitable. Materials, procedures, or methods may vary according to the particular circumstances, local building code requirements, design conditions, or statutory and regulatory requirements. While the information in this specification is believed to be accurate and reliable, it is presented without guarantee or responsibility on the part of Master Wall Inc.

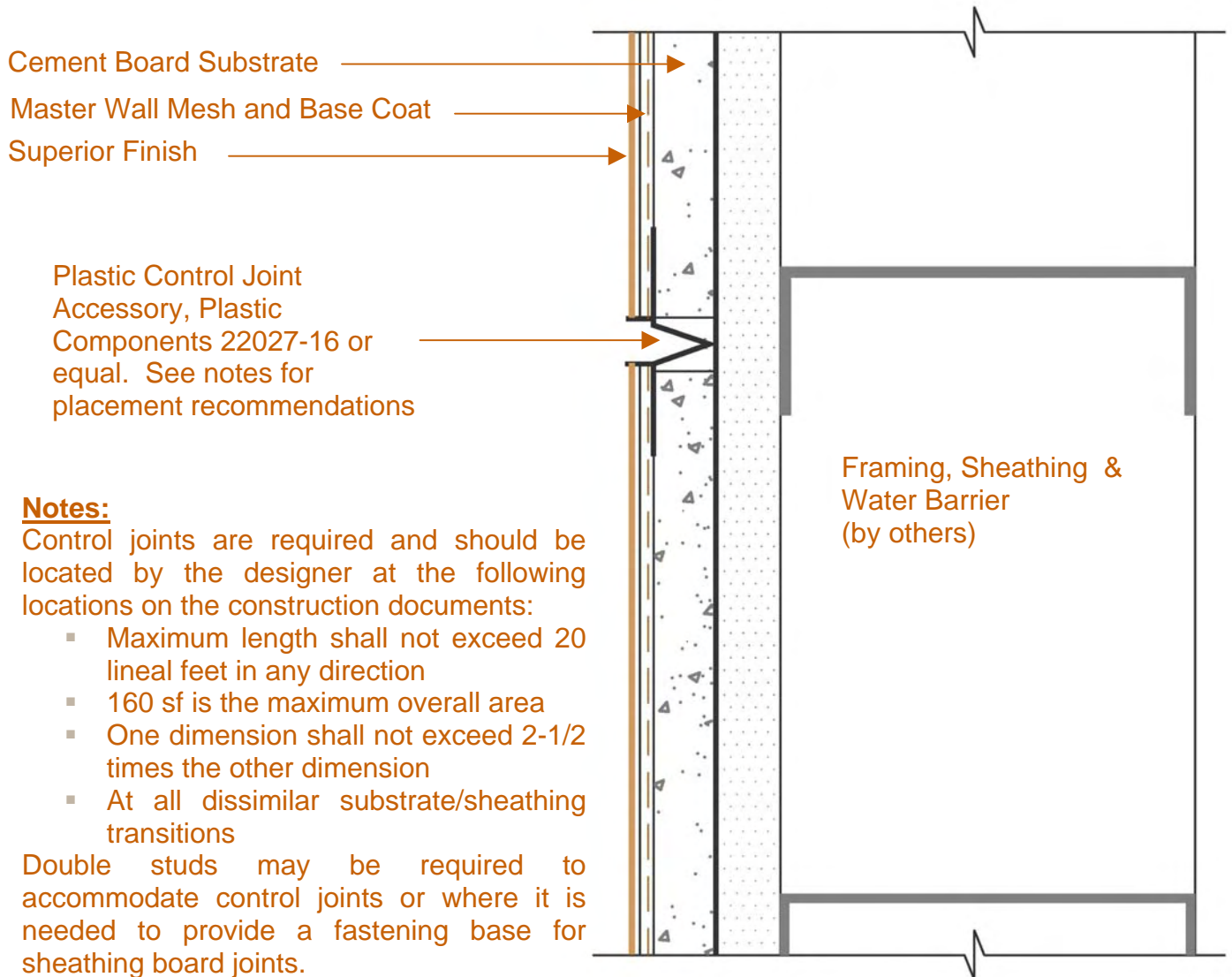


# Stucco Cement Board Coatings

## Conceptual Details

Corporate • P.O. Box 397 • Fortson • Georgia • 31808 • 800-755-0825 • FAX 706-569-6704

Technical • 800-760-2861 • FAX 734-433-0930



### Notes:

Control joints are required and should be located by the designer at the following locations on the construction documents:

- Maximum length shall not exceed 20 lineal feet in any direction
- 160 sf is the maximum overall area
- One dimension shall not exceed 2-1/2 times the other dimension
- At all dissimilar substrate/sheathing transitions

Double studs may be required to accommodate control joints or where it is needed to provide a fastening base for sheathing board joints.

## SC-01 Cross-Section

These drawings relay the conceptual conditions of Master Wall Systems and are not the construction drawings. Ultimately the design and detailing of an entire wall system is the responsibility of a professional. These details will guide the design professional in the use of Master Wall Products. Master Wall disclaims design, warranty or construction intent or responsibility.

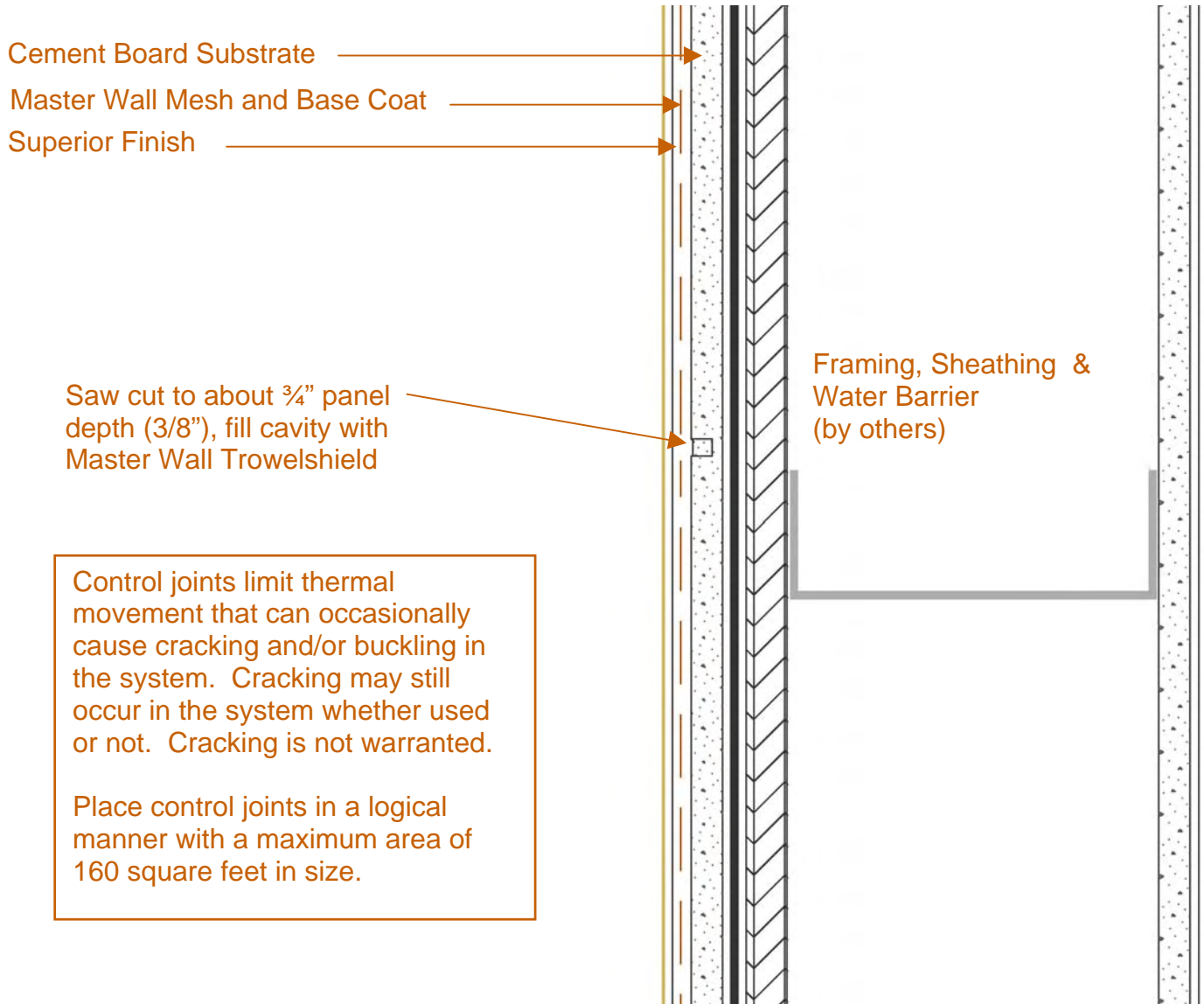


# Stucco Cement Board Coatings

## Conceptual Details

Corporate • P.O. Box 397 • Fortson • Georgia • 31808 • 800-755-0825 • FAX 706-569-6704

Technical • 800-760-2861 • FAX 734-433-0930



## SC-01A Hidden Control Joint

These drawings relay the conceptual conditions of Master Wall Systems and are not the construction drawings. Ultimately the design and detailing of an entire wall system is the responsibility of a professional. These details will guide the design professional in the use of Master Wall Products. Master Wall disclaims design, warranty or construction intent or responsibility.

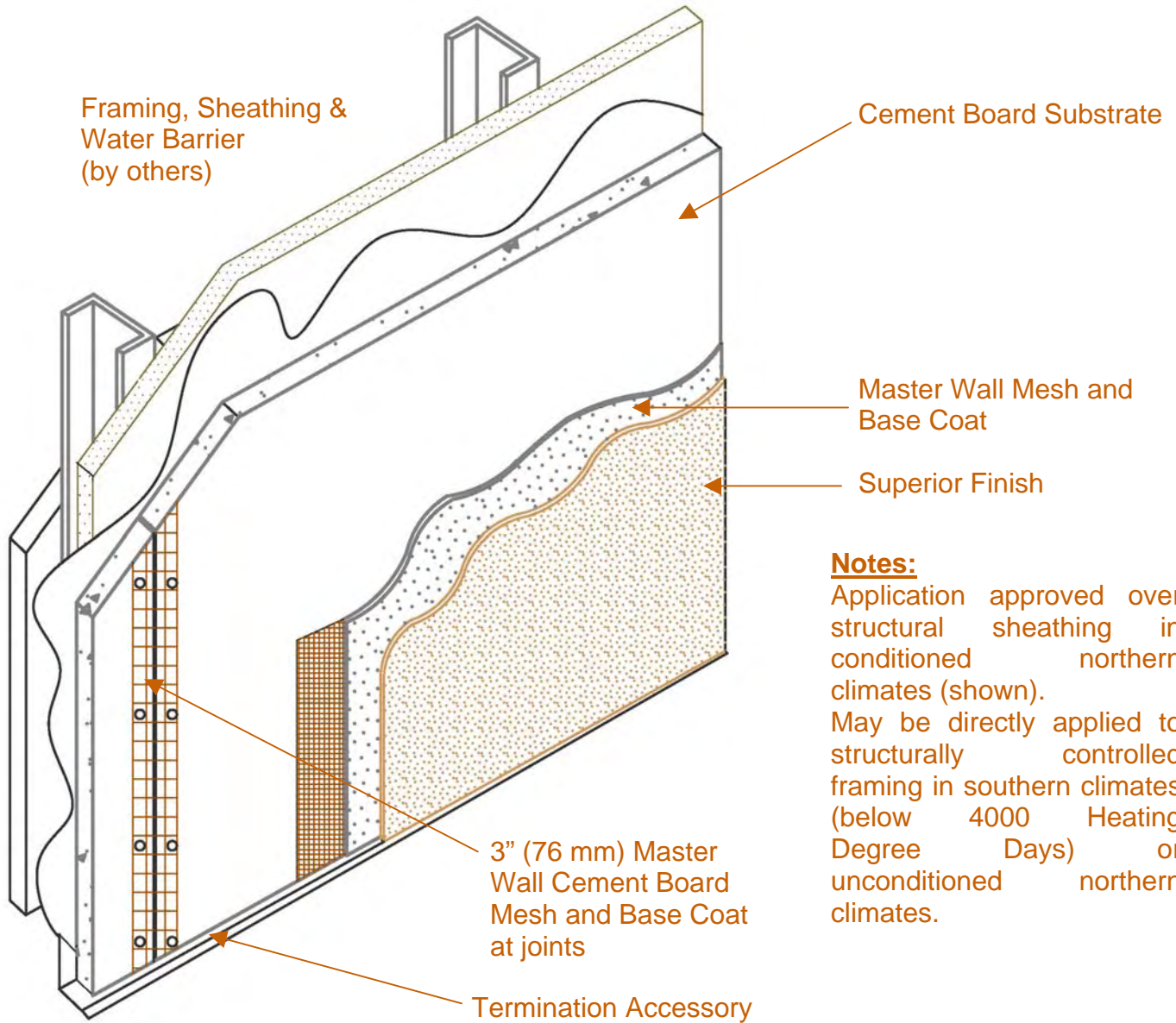


# Stucco Cement Board Coatings

Conceptual Details

Corporate • P.O. Box 397 • Fortson • Georgia • 31808 • 800-755-0825 • FAX 706-569-6704

Technical • 800-760-2861 • FAX 734-433-0930



**Notes:**

Application approved over structural sheathing in conditioned northern climates (shown). May be directly applied to structurally controlled framing in southern climates (below 4000 Heating Degree Days) or unconditioned northern climates.

## SC-02 Cross-Section Isometric

These drawings relay the conceptual conditions of Master Wall Systems and are not the construction drawings. Ultimately the design and detailing of an entire wall system is the responsibility of a professional. These details will guide the design professional in the use of Master Wall Products. Master Wall disclaims design, warranty or construction intent or responsibility.

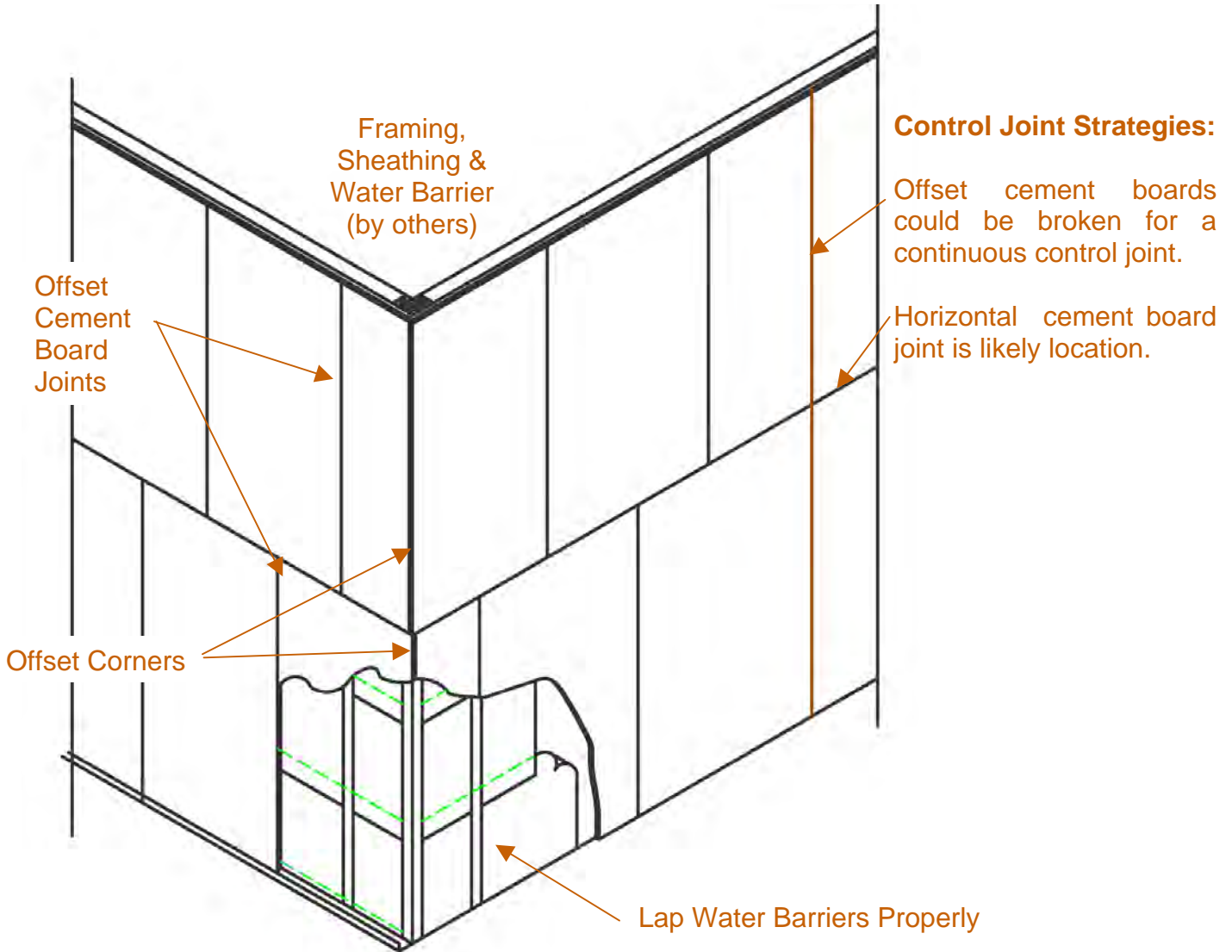


# Stucco Cement Board Coatings

Conceptual Details

Corporate • P.O. Box 397 • Fortson • Georgia • 31808 • 800-755-0825 • FAX 706-569-6704

Technical • 800-760-2861 • FAX 734-433-0930



## SC-03 Cement Board Layout

These drawings relay the conceptual conditions of Master Wall Systems and are not the construction drawings. Ultimately the design and detailing of an entire wall system is the responsibility of a professional. These details will guide the design professional in the use of Master Wall Products. Master Wall disclaims design, warranty or construction intent or responsibility.

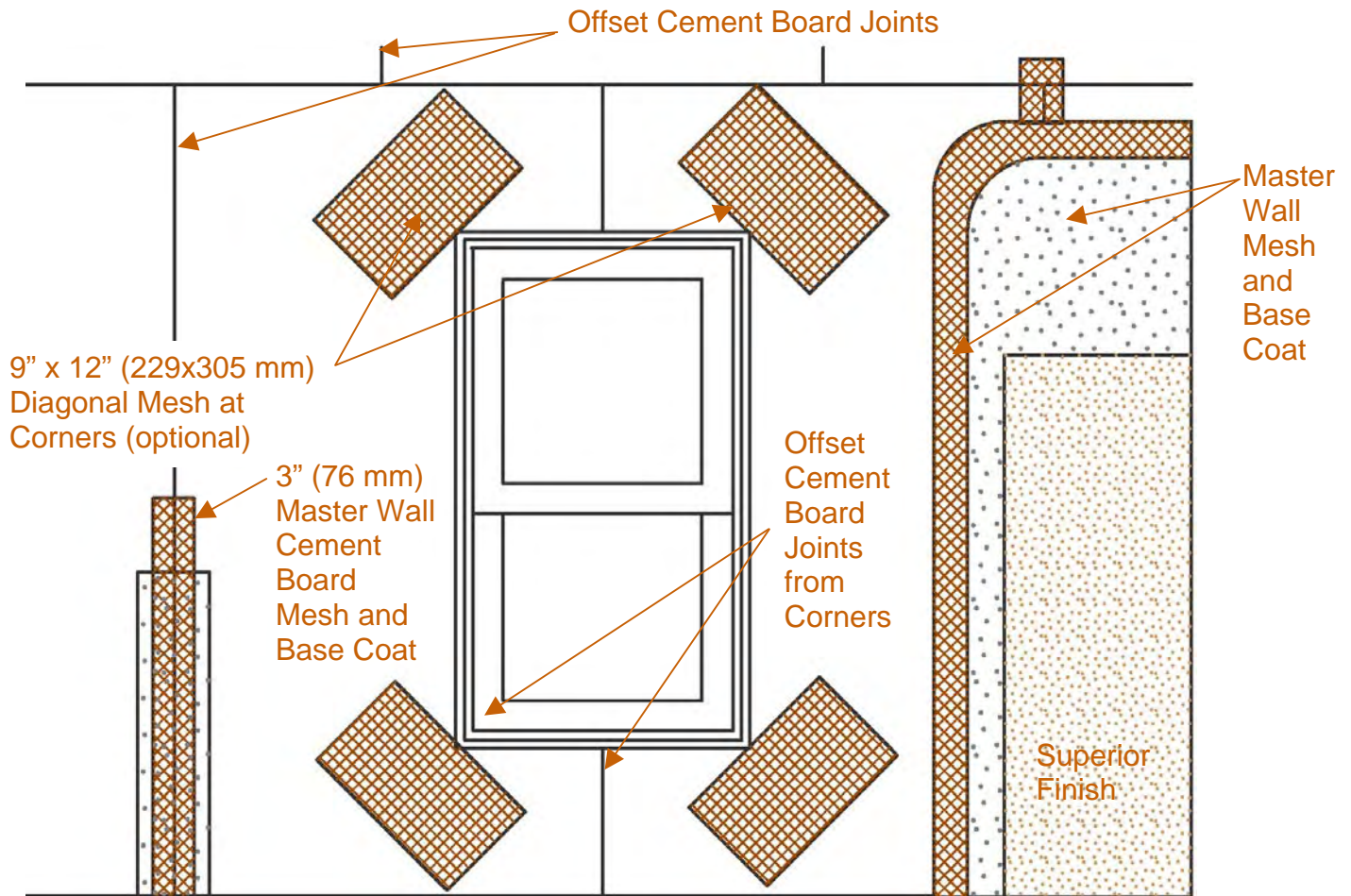


# Stucco Cement Board Coatings

Conceptual Details

Corporate • P.O. Box 397 • Fortson • Georgia • 31808 • 800-755-0825 • FAX 706-569-6704

Technical • 800-760-2861 • FAX 734-433-0930



**Notes:**

- Typical detailing for windows, doors and other openings
- Designer to size sealant joint for anticipated movement, minimum 3/8" (9.5 mm) sealant joint by sealant contractor
- Flashing may be required by others

## SC-04 Typical Reinforcing Mesh Application

These drawings relay the conceptual conditions of Master Wall Systems and are not the construction drawings. Ultimately the design and detailing of an entire wall system is the responsibility of a professional. These details will guide the design professional in the use of Master Wall Products. Master Wall disclaims design, warranty or construction intent or responsibility.

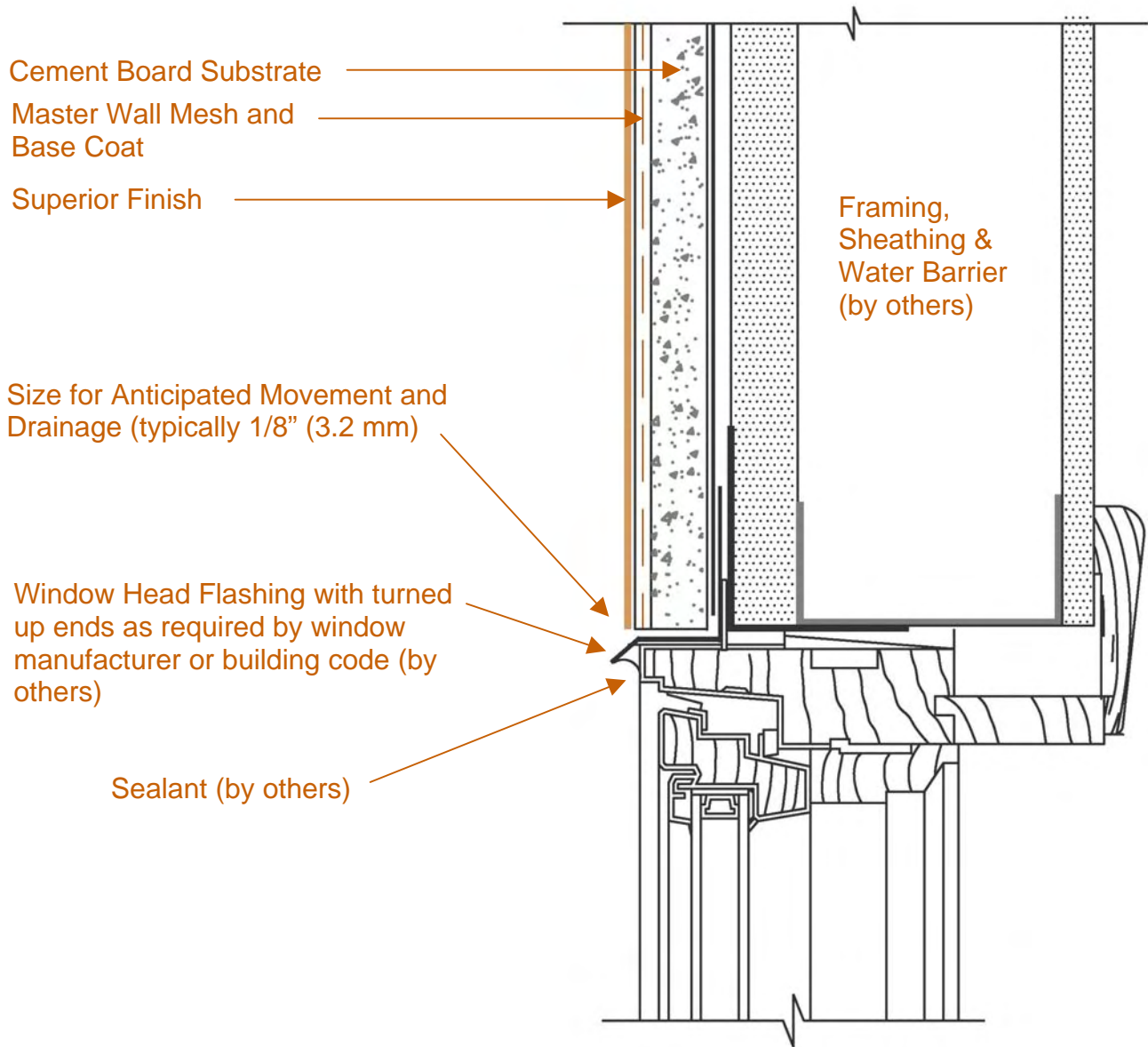


# Stucco Cement Board Coatings

Conceptual Details

Corporate • P.O. Box 397 • Fortson • Georgia • 31808 • 800-755-0825 • FAX 706-569-6704

Technical • 800-760-2861 • FAX 734-433-0930



## SC-05 Clad Window Head

These drawings relay the conceptual conditions of Master Wall Systems and are not the construction drawings. Ultimately the design and detailing of an entire wall system is the responsibility of a professional. These details will guide the design professional in the use of Master Wall Products. Master Wall disclaims design, warranty or construction intent or responsibility.

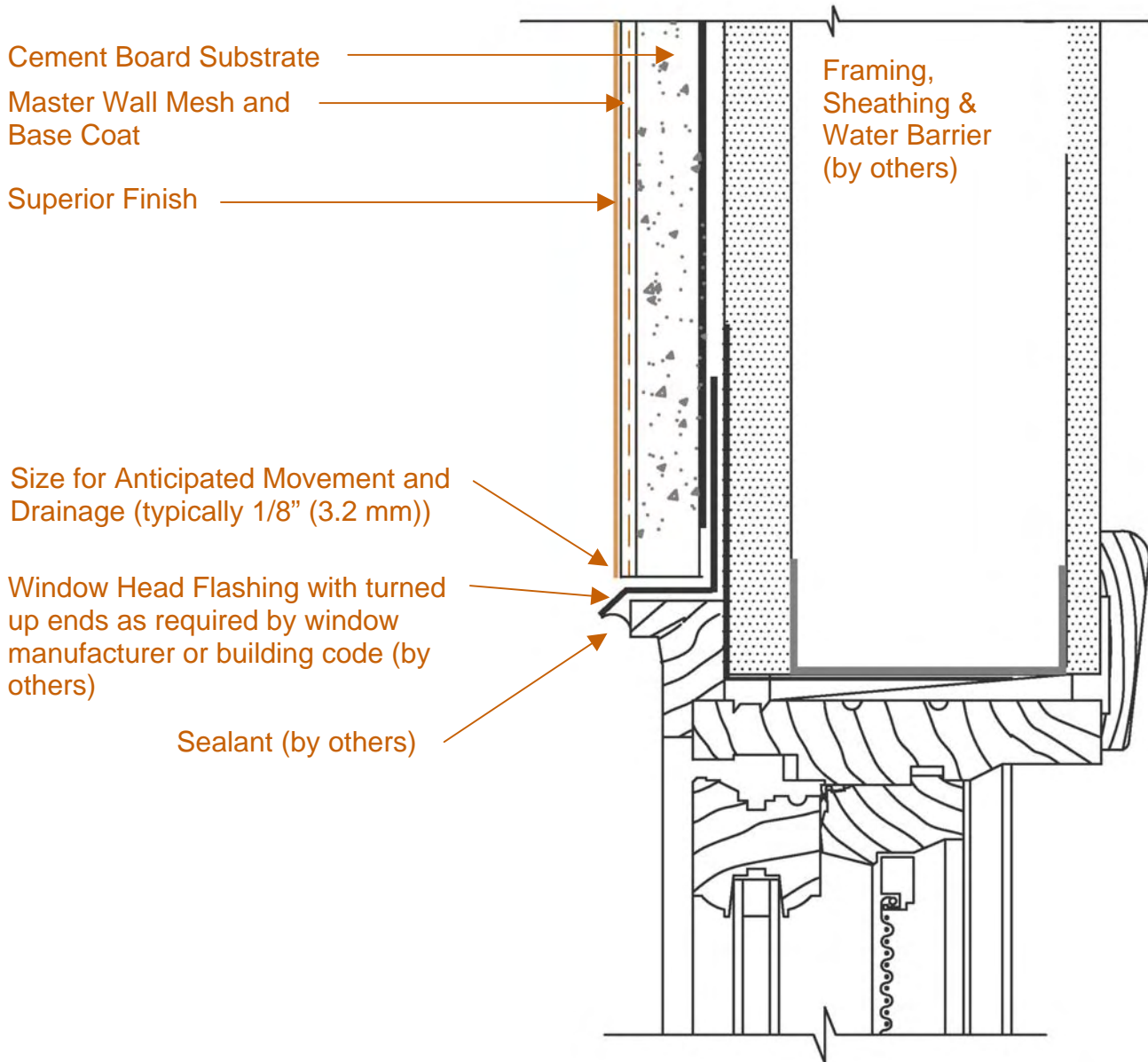


# Stucco Cement Board Coatings

Conceptual Details

Corporate • P.O. Box 397 • Fortson • Georgia • 31808 • 800-755-0825 • FAX 706-569-6704

Technical • 800-760-2861 • FAX 734-433-0930



## SC-06 Typical Wood Window Head Detail

These drawings relay the conceptual conditions of Master Wall Systems and are not the construction drawings. Ultimately the design and detailing of an entire wall system is the responsibility of a professional. These details will guide the design professional in the use of Master Wall Products. Master Wall disclaims design, warranty or construction intent or responsibility.

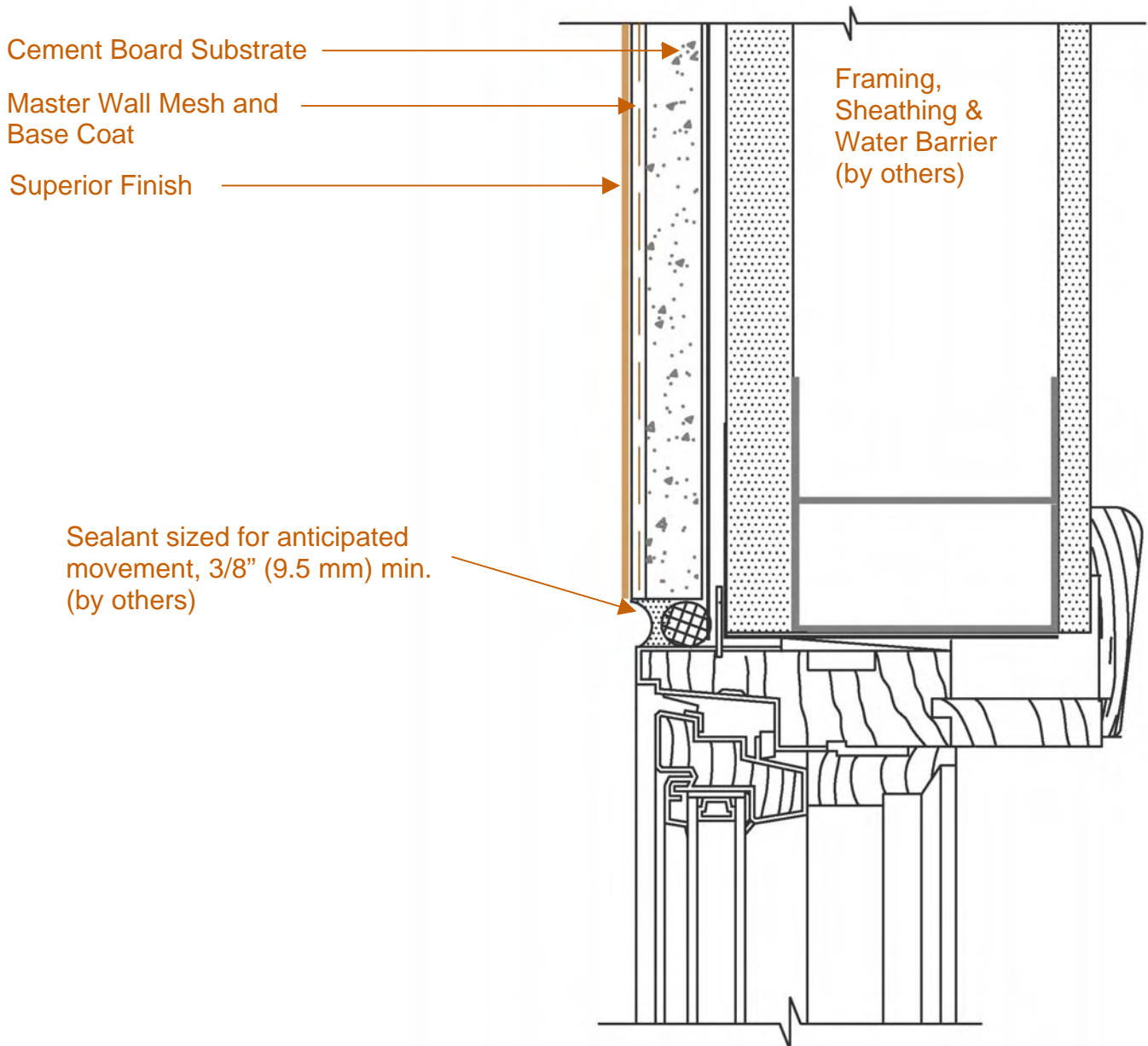


# Stucco Cement Board Coatings

Conceptual Details

Corporate • P.O. Box 397 • Fortson • Georgia • 31808 • 800-755-0825 • FAX 706-569-6704

Technical • 800-760-2861 • FAX 734-433-0930



## SC-07 Typical Jamb Detail

These drawings relay the conceptual conditions of Master Wall Systems and are not the construction drawings. Ultimately the design and detailing of an entire wall system is the responsibility of a professional. These details will guide the design professional in the use of Master Wall Products. Master Wall disclaims design, warranty or construction intent or responsibility.

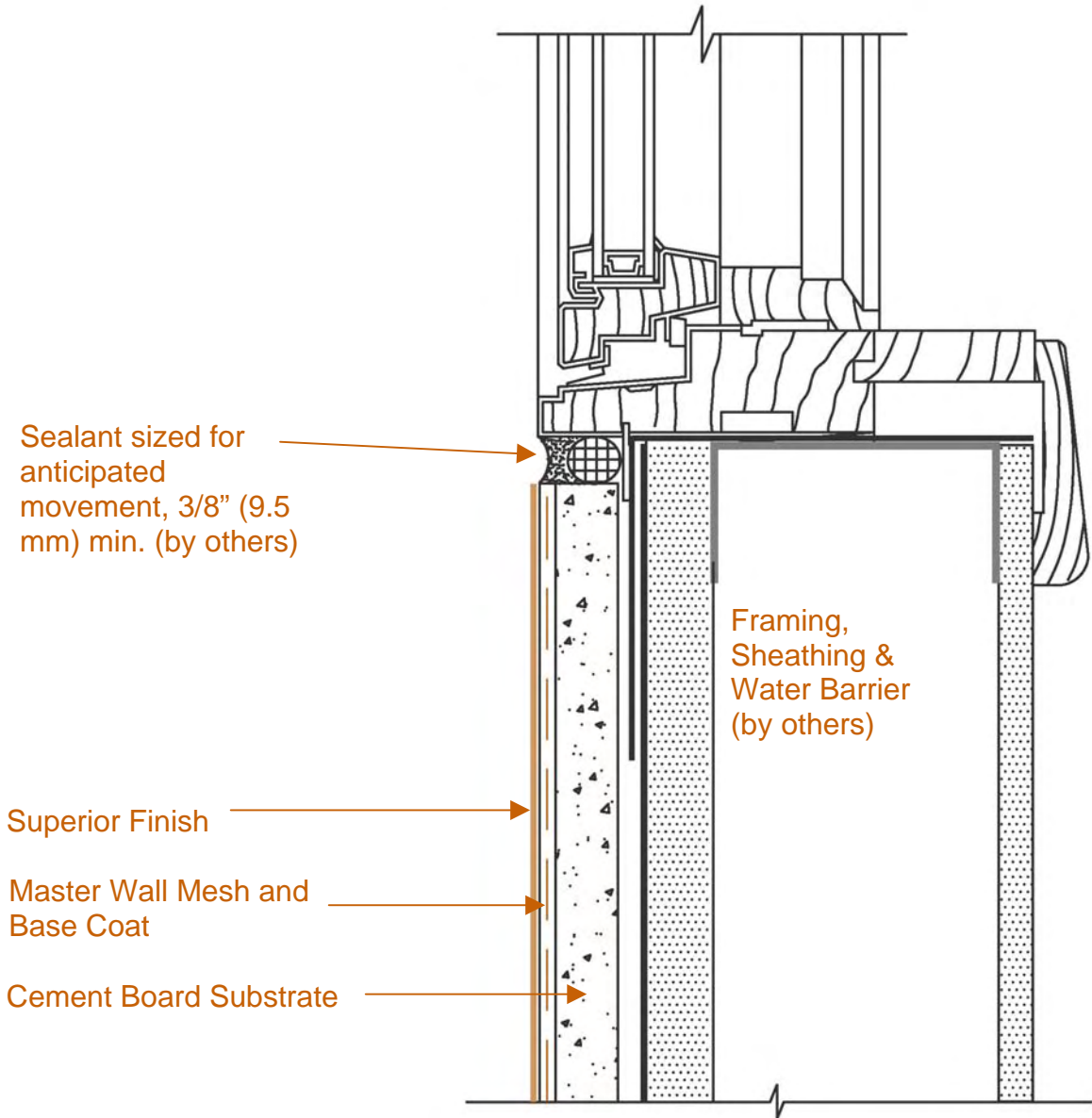


# Stucco Cement Board Coatings

Conceptual Details

Corporate • P.O. Box 397 • Fortson • Georgia • 31808 • 800-755-0825 • FAX 706-569-6704

Technical • 800-760-2861 • FAX 734-433-0930



## SC-08 Typical Sill Detail

These drawings relay the conceptual conditions of Master Wall Systems and are not the construction drawings. Ultimately the design and detailing of an entire wall system is the responsibility of a professional. These details will guide the design professional in the use of Master Wall Products. Master Wall disclaims design, warranty or construction intent or responsibility.

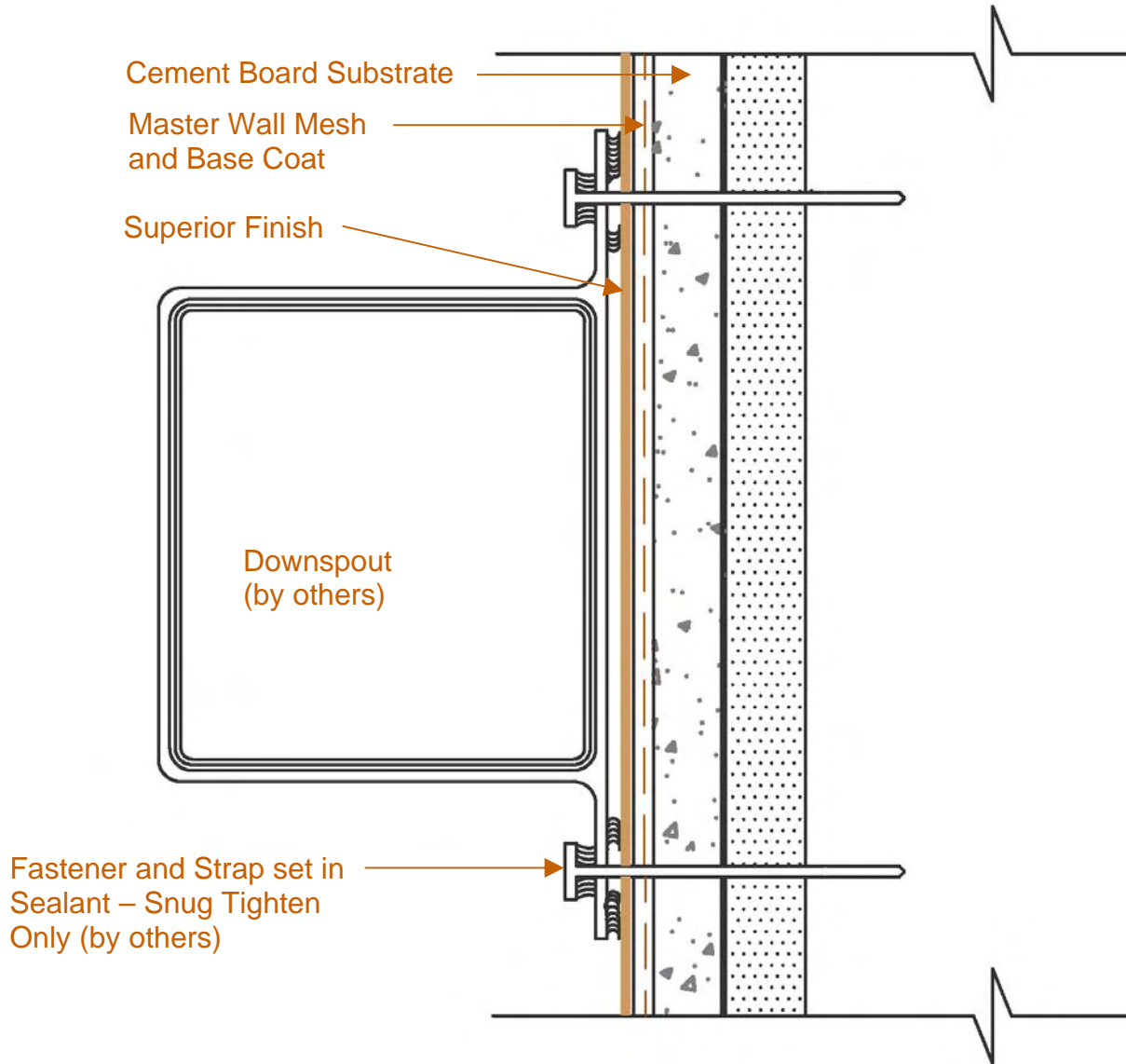


# Stucco Cement Board Coatings

Conceptual Details

Corporate • P.O. Box 397 • Fortson • Georgia • 31808 • 800-755-0825 • FAX 706-569-6704

Technical • 800-760-2861 • FAX 734-433-0930



## SC-09 Typical Downspout Attachment

These drawings relay the conceptual conditions of Master Wall Systems and are not the construction drawings. Ultimately the design and detailing of an entire wall system is the responsibility of a professional. These details will guide the design professional in the use of Master Wall Products. Master Wall disclaims design, warranty or construction intent or responsibility.

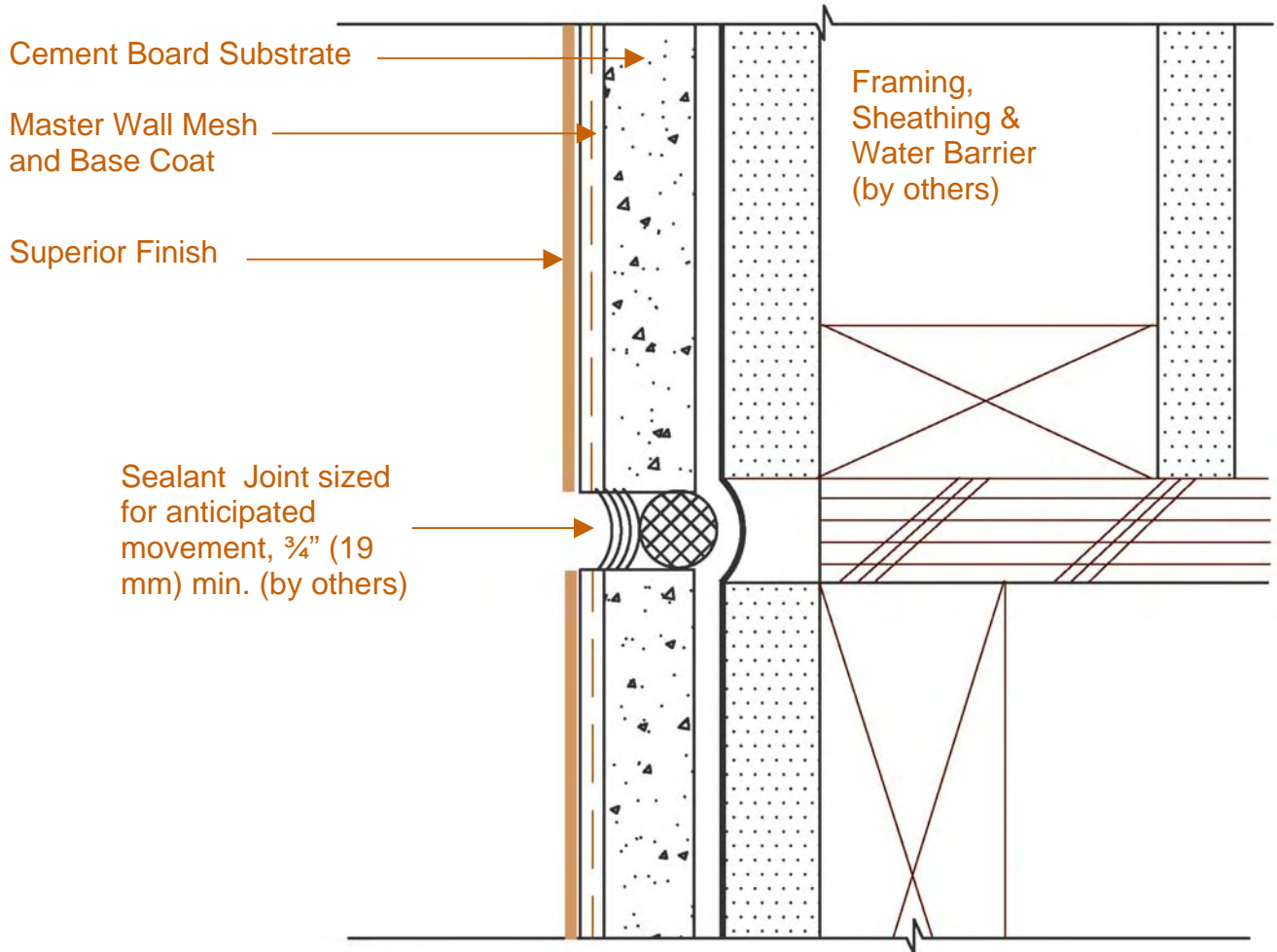


# Stucco Cement Board Coatings

Conceptual Details

Corporate • P.O. Box 397 • Fortson • Georgia • 31808 • 800-755-0825 • FAX 706-569-6704

Technical • 800-760-2861 • FAX 734-433-0930



## SC-10 Typical Horizontal Expansion Joint at Floor Line – Wood Frame Construction

These drawings relay the conceptual conditions of Master Wall Systems and are not the construction drawings. Ultimately the design and detailing of an entire wall system is the responsibility of a professional. These details will guide the design professional in the use of Master Wall Products. Master Wall disclaims design, warranty or construction intent or responsibility.

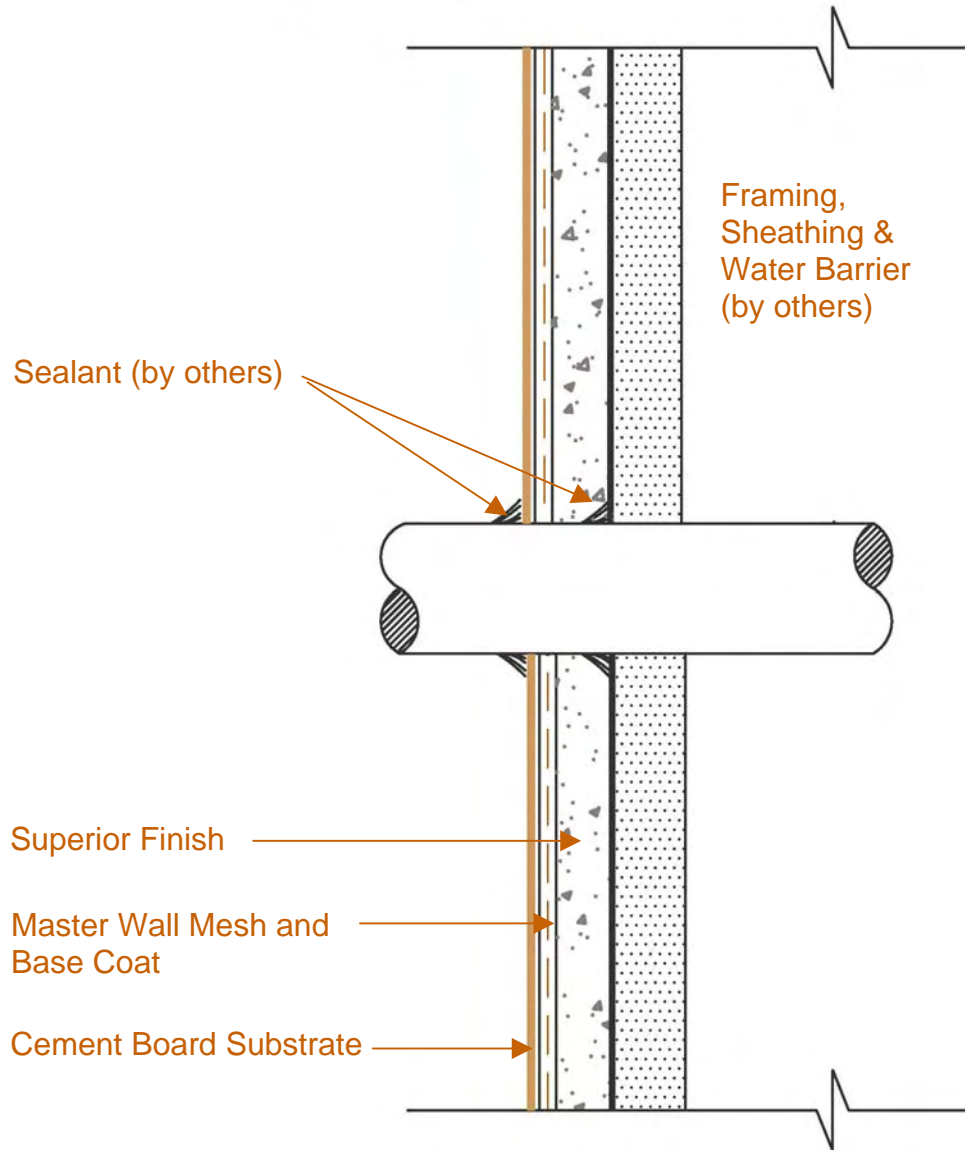


# Stucco Cement Board Coatings

Conceptual Details

Corporate • P.O. Box 397 • Fortson • Georgia • 31808 • 800-755-0825 • FAX 706-569-6704

Technical • 800-760-2861 • FAX 734-433-0930



## SC-11 Pipe Penetration Detail

These drawings relay the conceptual conditions of Master Wall Systems and are not the construction drawings. Ultimately the design and detailing of an entire wall system is the responsibility of a professional. These details will guide the design professional in the use of Master Wall Products. Master Wall disclaims design, warranty or construction intent or responsibility.

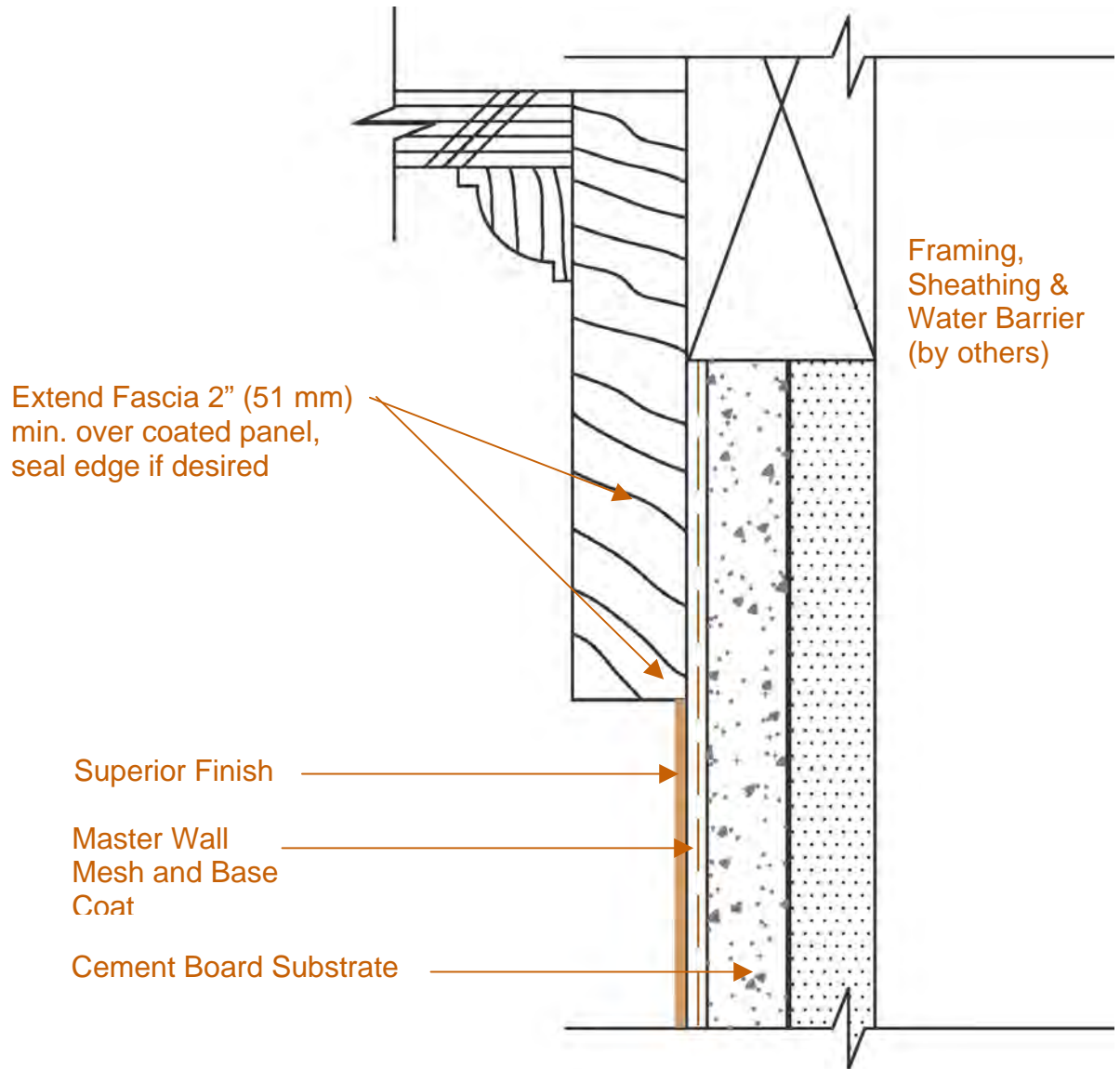


# Stucco Cement Board Coatings

Conceptual Details

Corporate • P.O. Box 397 • Fortson • Georgia • 31808 • 800-755-0825 • FAX 706-569-6704

Technical • 800-760-2861 • FAX 734-433-0930



## SC-12 Soffit/Gable Termination

These drawings relay the conceptual conditions of Master Wall Systems and are not the construction drawings. Ultimately the design and detailing of an entire wall system is the responsibility of a professional. These details will guide the design professional in the use of Master Wall Products. Master Wall disclaims design, warranty or construction intent or responsibility.

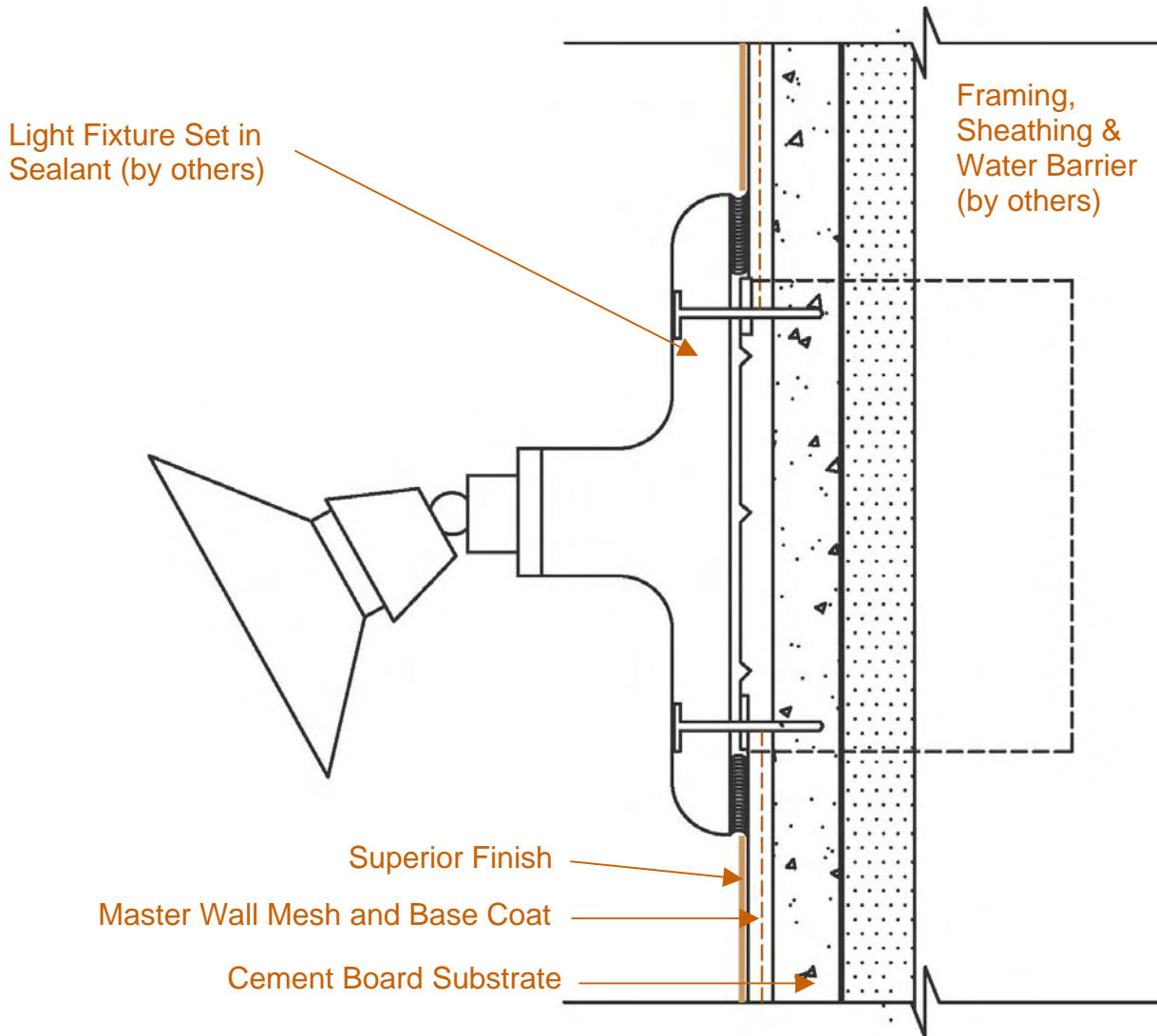


# Stucco Cement Board Coatings

Conceptual Details

Corporate • P.O. Box 397 • Fortson • Georgia • 31808 • 800-755-0825 • FAX 706-569-6704

Technical • 800-760-2861 • FAX 734-433-0930



## SC-13 Typical Light Fixture

These drawings relay the conceptual conditions of Master Wall Systems and are not the construction drawings. Ultimately the design and detailing of an entire wall system is the responsibility of a professional. These details will guide the design professional in the use of Master Wall Products. Master Wall disclaims design, warranty or construction intent or responsibility.

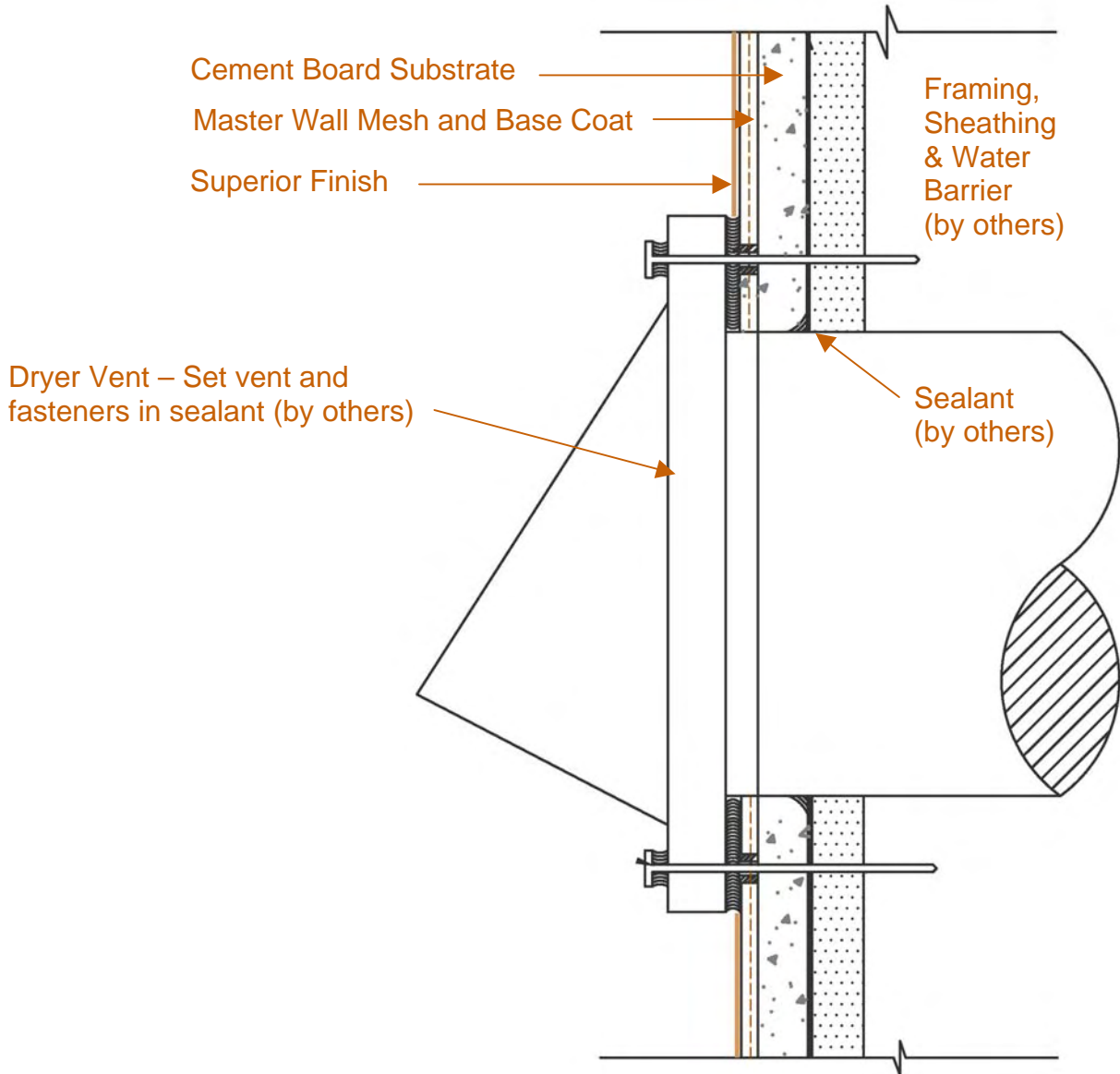


# Stucco Cement Board Coatings

Conceptual Details

Corporate • P.O. Box 397 • Fortson • Georgia • 31808 • 800-755-0825 • FAX 706-569-6704

Technical • 800-760-2861 • FAX 734-433-0930



## SC-14 Dryer Vent Detail

These drawings relay the conceptual conditions of Master Wall Systems and are not the construction drawings. Ultimately the design and detailing of an entire wall system is the responsibility of a professional. These details will guide the design professional in the use of Master Wall Products. Master Wall disclaims design, warranty or construction intent or responsibility.

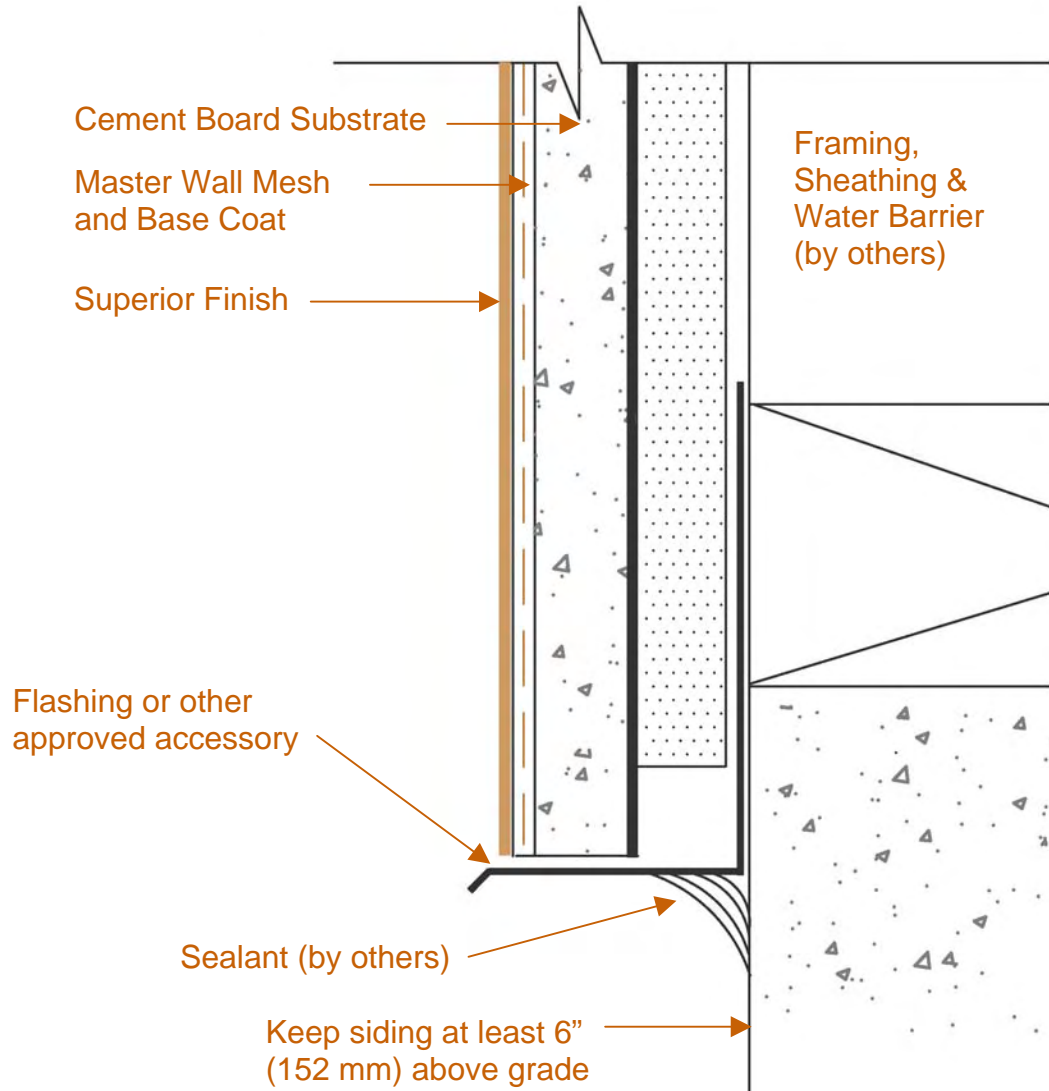


# Stucco Cement Board Coatings

Conceptual Details

Corporate • P.O. Box 397 • Fortson • Georgia • 31808 • 800-755-0825 • FAX 706-569-6704

Technical • 800-760-2861 • FAX 734-433-0930



## SC-15 Termination at Foundation Detail

These drawings relay the conceptual conditions of Master Wall Systems and are not the construction drawings. Ultimately the design and detailing of an entire wall system is the responsibility of a professional. These details will guide the design professional in the use of Master Wall Products. Master Wall disclaims design, warranty or construction intent or responsibility.

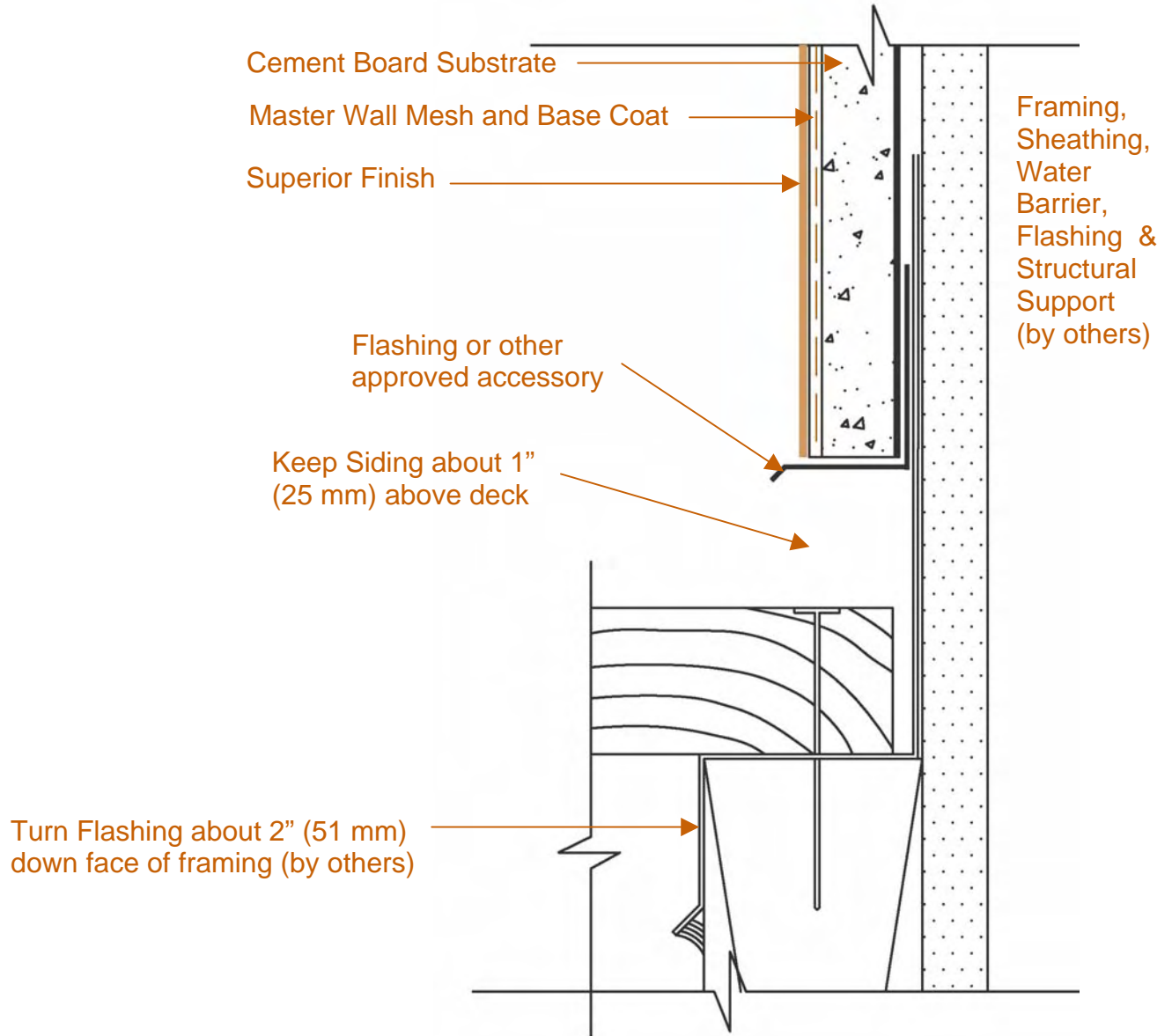


# Stucco Cement Board Coatings

Conceptual Details

Corporate • P.O. Box 397 • Fortson • Georgia • 31808 • 800-755-0825 • FAX 706-569-6704

Technical • 800-760-2861 • FAX 734-433-0930



## SC-16 Termination at Decking

These drawings relay the conceptual conditions of Master Wall Systems and are not the construction drawings. Ultimately the design and detailing of an entire wall system is the responsibility of a professional. These details will guide the design professional in the use of Master Wall Products. Master Wall disclaims design, warranty or construction intent or responsibility.

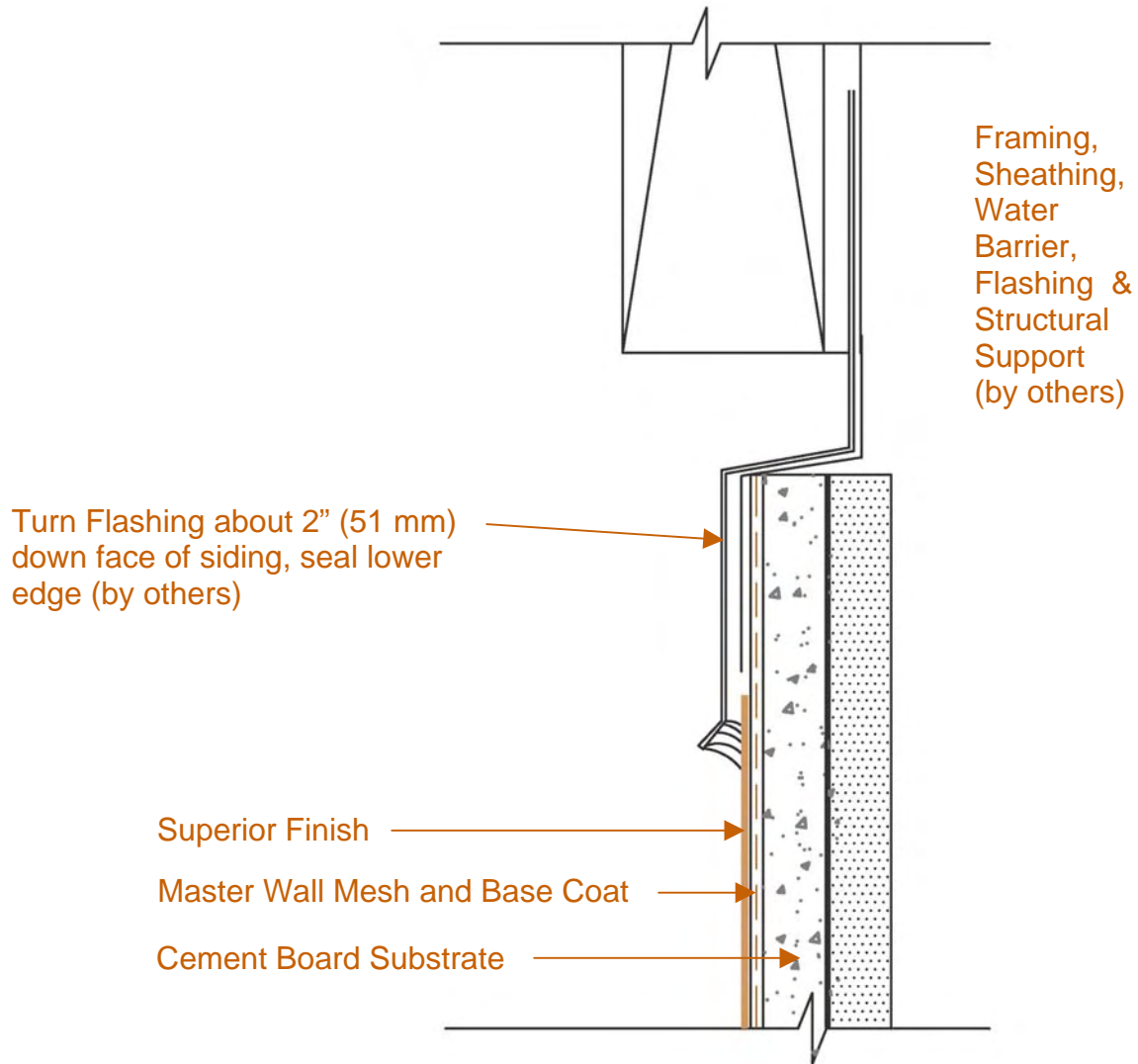


# Stucco Cement Board Coatings

Conceptual Details

Corporate • P.O. Box 397 • Fortson • Georgia • 31808 • 800-755-0825 • FAX 706-569-6704

Technical • 800-760-2861 • FAX 734-433-0930



## SC-17 Termination Under Deck

These drawings relay the conceptual conditions of Master Wall Systems and are not the construction drawings. Ultimately the design and detailing of an entire wall system is the responsibility of a professional. These details will guide the design professional in the use of Master Wall Products. Master Wall disclaims design, warranty or construction intent or responsibility.

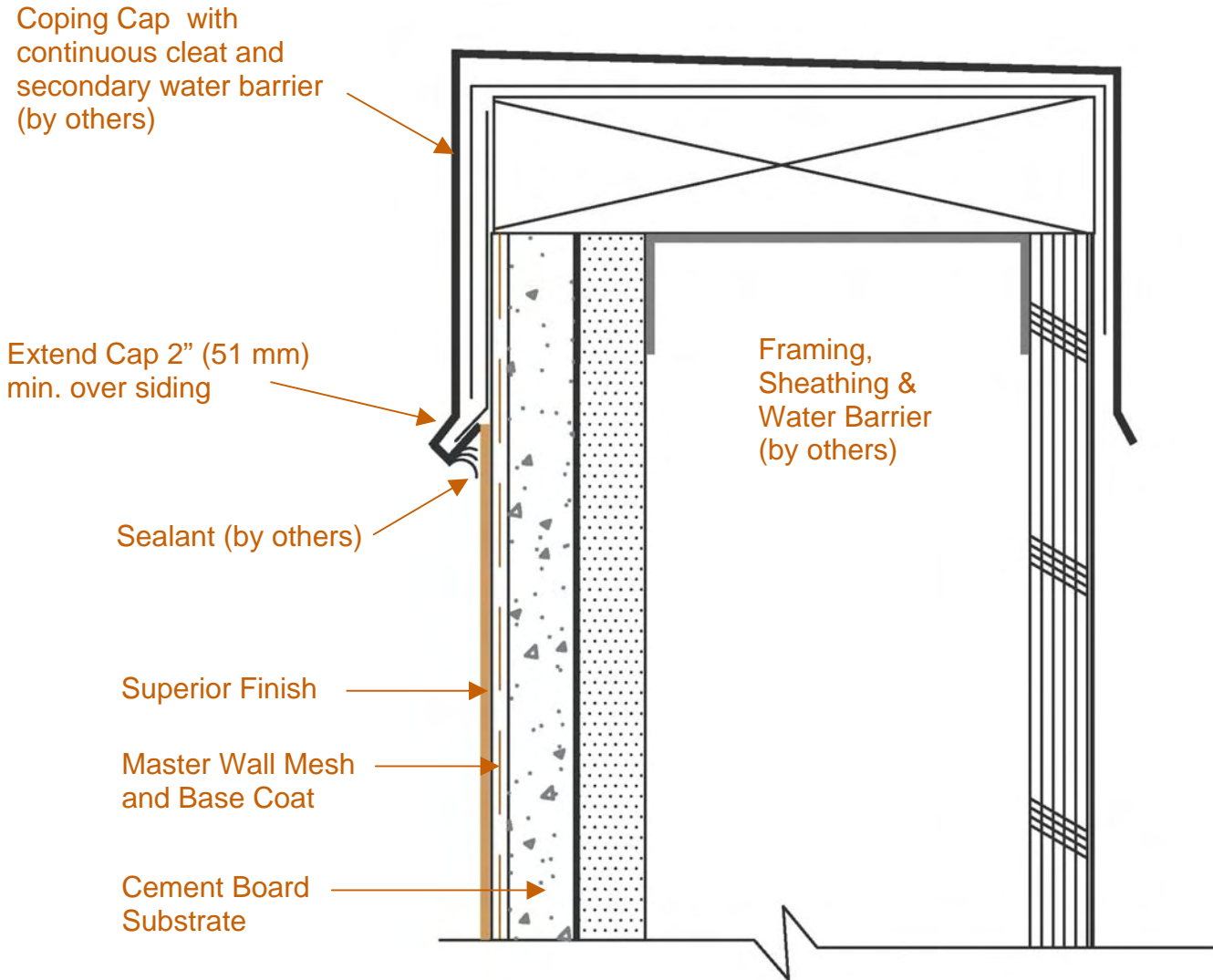


# Stucco Cement Board Coatings

Conceptual Details

Corporate • P.O. Box 397 • Fortson • Georgia • 31808 • 800-755-0825 • FAX 706-569-6704

Technical • 800-760-2861 • FAX 734-433-0930



## SC-18 Cap Detail

These drawings relay the conceptual conditions of Master Wall Systems and are not the construction drawings. Ultimately the design and detailing of an entire wall system is the responsibility of a professional. These details will guide the design professional in the use of Master Wall Products. Master Wall disclaims design, warranty or construction intent or responsibility.

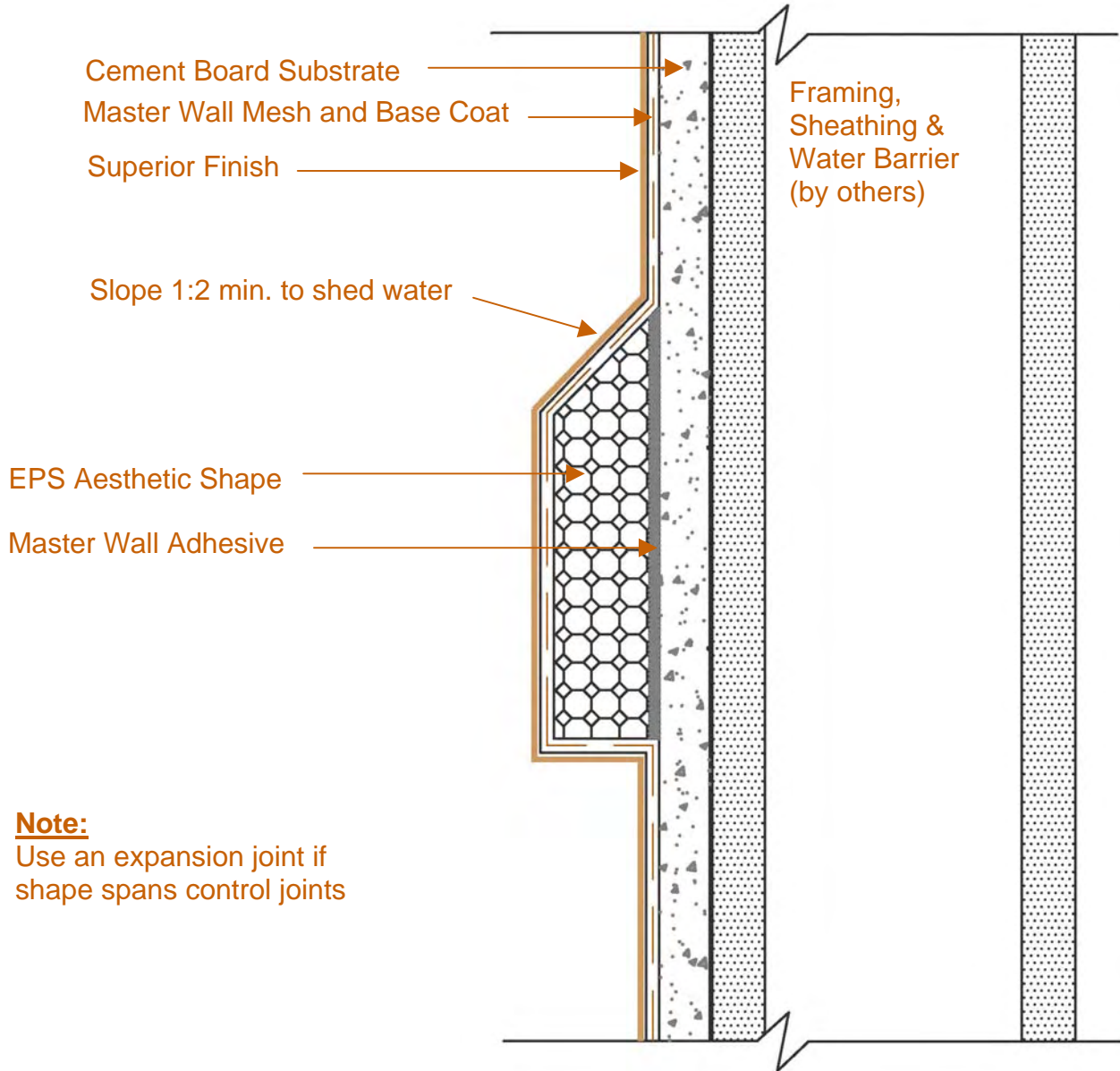


# Stucco Cement Board Coatings

Conceptual Details

Corporate • P.O. Box 397 • Fortson • Georgia • 31808 • 800-755-0825 • FAX 706-569-6704

Technical • 800-760-2861 • FAX 734-433-0930



## SC-19 EPS Shape Detail

These drawings relay the conceptual conditions of Master Wall Systems and are not the construction drawings. Ultimately the design and detailing of an entire wall system is the responsibility of a professional. These details will guide the design professional in the use of Master Wall Products. Master Wall disclaims design, warranty or construction intent or responsibility.



# Stucco Cement Board Coatings

## Conceptual Details

Corporate • P.O. Box 397 • Fortson • Georgia • 31808 • 800-755-0825 • FAX 706-569-6704

Technical • 800-760-2861 • FAX 734-433-0930

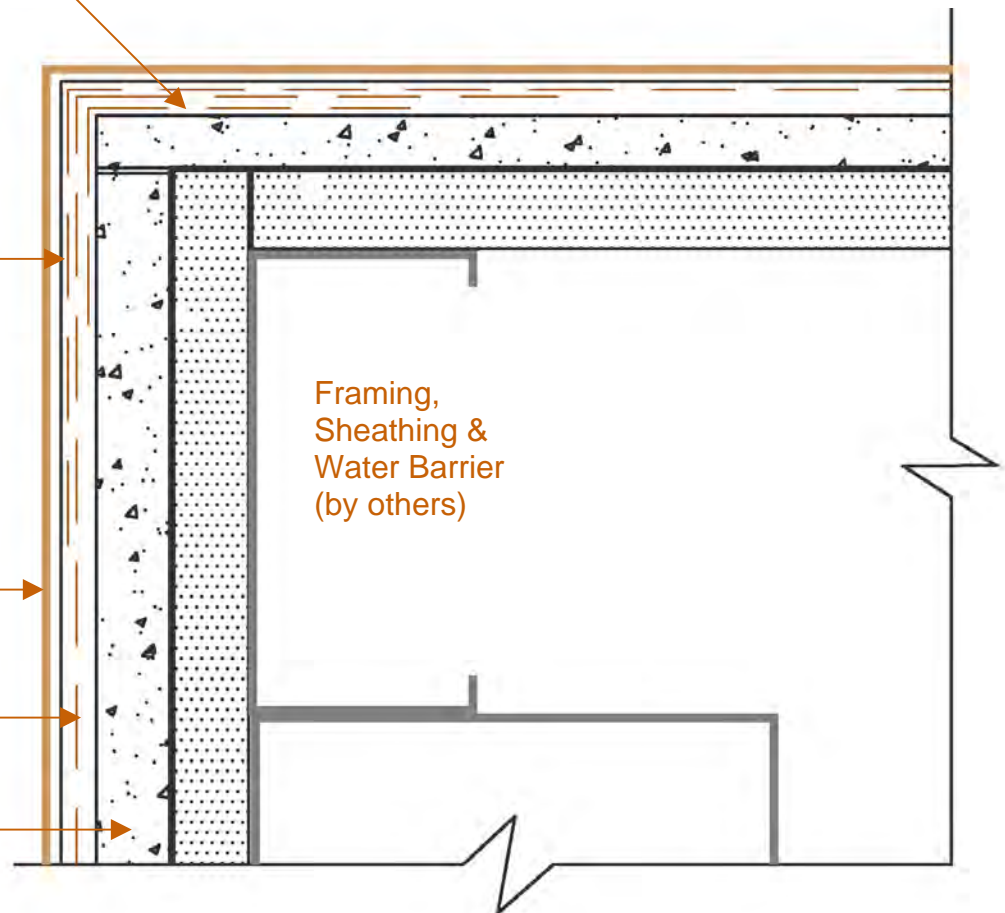
3" (76 mm) Master Wall Self  
Adhesive Mesh and Base  
Coat at Corners

Lap Mesh 12"  
(305 mm)  
each side of  
corner

Superior Finish

Master Wall  
Mesh and Base  
Coat

Cement Board  
Substrate



## SC-20 Corner Detail

These drawings relay the conceptual conditions of Master Wall Systems and are not the construction drawings. Ultimately the design and detailing of an entire wall system is the responsibility of a professional. These details will guide the design professional in the use of Master Wall Products. Master Wall disclaims design, warranty or construction intent or responsibility.

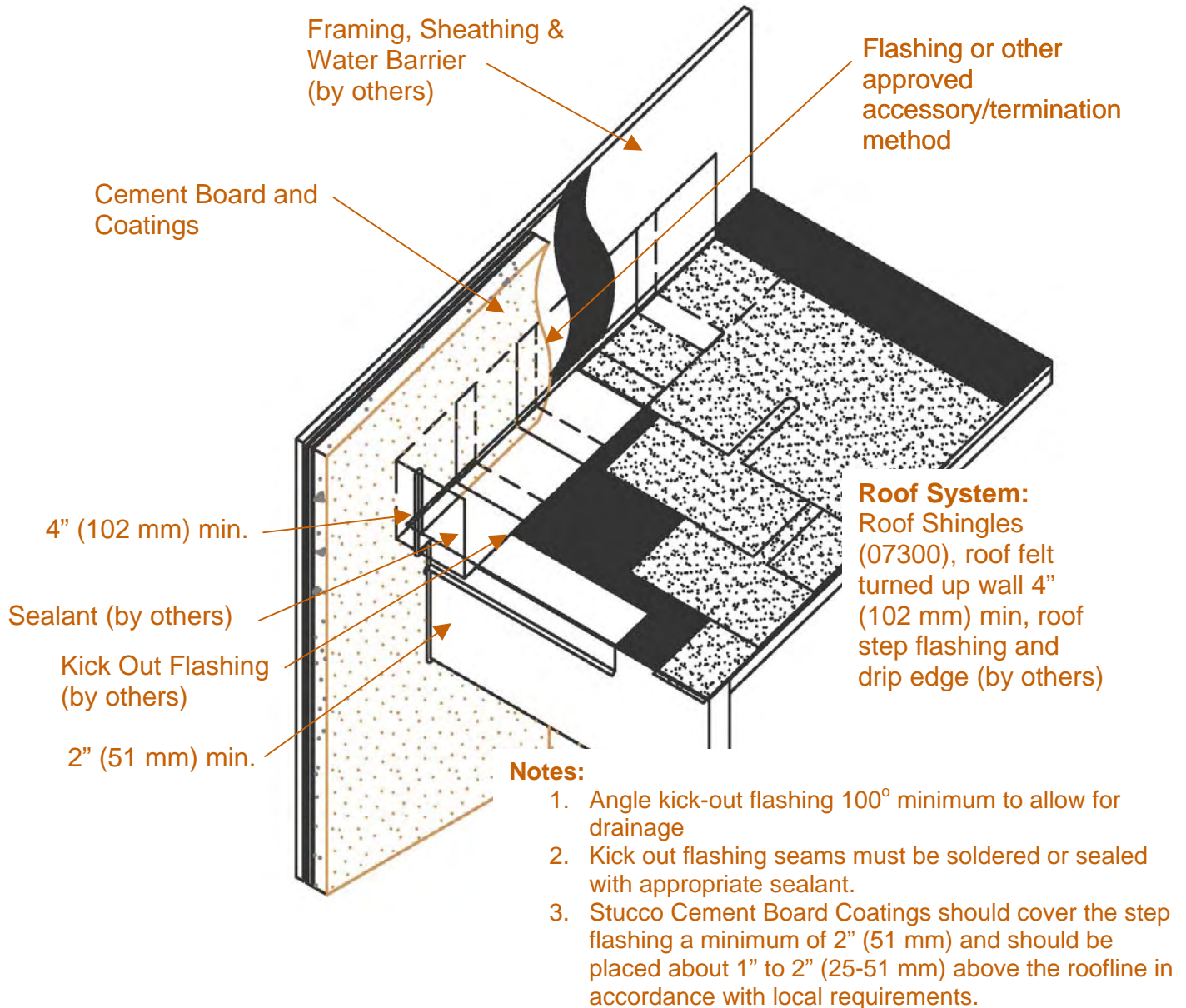


# Stucco Cement Board Coatings

## Conceptual Details

Corporate • P.O. Box 397 • Fortson • Georgia • 31808 • 800-755-0825 • FAX 706-569-6704

Technical • 800-760-2861 • FAX 734-433-0930



## SC-21 Typical Roof/Wall Intersection

These drawings relay the conceptual conditions of Master Wall Systems and are not the construction drawings. Ultimately the design and detailing of an entire wall system is the responsibility of a professional. These details will guide the design professional in the use of Master Wall Products. Master Wall disclaims design, warranty or construction intent or responsibility.



**Master Wall, Inc**  
**Building a Culture of Excellence**

# Stucco Cement Board Coatings

## 5 Year Labor & Material Limited Warranty

Master Wall Inc. warrants the properly designed and installed Stucco Cement Board Coatings and materials for 5 years from the date of installation. Master Wall Inc.'s exclusive liability under this warranty is to supply replacement materials and labor or corrective procedures, if it is shown that the materials supplied by Master Wall Inc., were defective when installed by the Master Wall Inc. certified applicator. Remedies shall be solely determined by Master Wall Inc. and no other warranties are expressed or implied. For a valid warranty, the system and products must be installed in accordance with Master Wall Inc.'s written recommendations, specifications, details, bulletins and other project-specific written recommendations. Master Wall Inc. must be notified in writing within 10 business days of the original discovery of the defect.

Master Wall Inc., is not responsible for structural conditions, design conditions beyond those noted in our literature, architecture, engineering or workmanship of any project. Stucco Cement Board Coatings may have hairline cracks, spalling, fastener popping or efflorescence, which are not considered product defects. Drainage Systems are warranted to drain incidental water for the warranty period. Materials must be properly stored and applied in a timely manner. Workmanship, aesthetics and installation are beyond the scope of this warranty as are any deviations from Master Wall Inc. Documents not specifically approved in writing.

Abuse, misuse, excessive weather or environmental conditions beyond what the products or systems have been tested, designed or approved for is expressly limited. Certain colors with organic pigments are less fade-resistant than others. The building, system and products must be properly maintained in accordance with Master Wall Inc., documents, local environmental conditions and good building practices. In no case is Master Wall Inc. responsible for incidental and consequential damages.

**This warranty becomes effective only when all bills for the components of the system have been paid.**

**Except as stated, Master Wall, Inc., expressly disclaims any warranty of merchantability or fitness for a particular purpose. The above remedies are to be deemed exclusive.**

Project:

Applicator:

Warranty Date: