



Rollershield-TG

Systems

Rollershield Drainage EIFS
Rollershield LAB
Cemplaster Fiberstucco
Common Cladding Systems

VOC: <1% by Weight

VOC: 10 g/l

**Manufacture Locations:
30058 • 77474 • 84651**

Packaging: 5 gallon (19L) pail

Pail Weight: 65 lbs (29.5 kg)

Shelf Life: 2 years

Coverage (estimated per pail)

Trowel: 200-230 sf (19-21 sm)

Dry to Touch: 1 hour @ room temperature

Recoat Time: 2 hours @ room temperature

Drying Time: 12 hours @ room temperature

Application Range: 40°-110°F (5°-43°C)

Exposure: 30 days maximum for EIFS*, 6 months maximum for other claddings.

*surface must be clean and dry prior to application of EIFS

Rollershield-TG is a high quality 100% acrylic flexible air and water barrier. Rollershield-TG is the trowel grade version of Rollershield and can be used for filling large gaps or leveling large areas in the Rollershield LAB system application. Rollershield-TG forms a continuous air and water barrier that protects approved substrates from incidental water damage.



- **100% Coverage**
- **Doesn't rattle in the wind**
- **Vapor permeable with low air infiltration rate**
- **Used as water barrier and flashing**



M Master Wall Inc.®
Building a Culture of Excellence
masterwall.com

PO Box 397 • Fortson • GA • 31808 • 800-755-0825 • Tech: 800-760-2861



Rollershield-TG

Temp: 40°-110°F (5°-43°C) • Dry to Touch: 1 hour • Dry Time: 12 hrs
at room temperature, working and drying time will vary with temperature and humidity

Application Procedure

Job Conditions - Air and substrate temperature for application of Rollershield-TG must be 40°F (5°C) or higher and must remain 40°F (5°C) or higher for a minimum of 24 hours. Provide temporary protection to protect the wall system from damage until permanent flashings, caps and sealants are installed. Store materials within prescribed temperature limits and out of direct sunlight. Working and drying times are based upon normal room temperature conditions and will vary with temperature and humidity.

Preparation - The substrate must be approved by Master Wall Inc., clean, dry, structurally sound and free of efflorescence, oil, grease, form release agents and curing compounds or anything that would affect bond. Painted surfaces are not acceptable and must be removed. Substrates must be flat and free of fins or planar irregularities greater than 1/4" in 10'-0" (6.35 mm in 3.05m).

Concrete - Must have cured a minimum of 28 days prior to the application of Rollershield-TG. If form release agents or curing compounds exist on the surface, they must be removed with a solution of muriatic acid or similar product (with appropriate precautions). Remove any residual acid by flushing with water.

Brick/Masonry - If joints are not struck flush, multiple coats may be required. Contact Master Wall for more information.

Sheathing Applications - Sheathing gaps must be less than 1/4" (6.4 mm). For gaps larger than 1/4" (6.4 mm) WeatherStop Tape or Rollershield Flashing Tape may be used. Gap wood-based sheathing per manufacturers recommendations, typically 1/8" (3.2 mm) minimum.

Mixing - Thoroughly stir Rollershield-TG into a homogenous consistency. Do not add water, over mix, or add accelerators or retarders to Rollershield-TG.

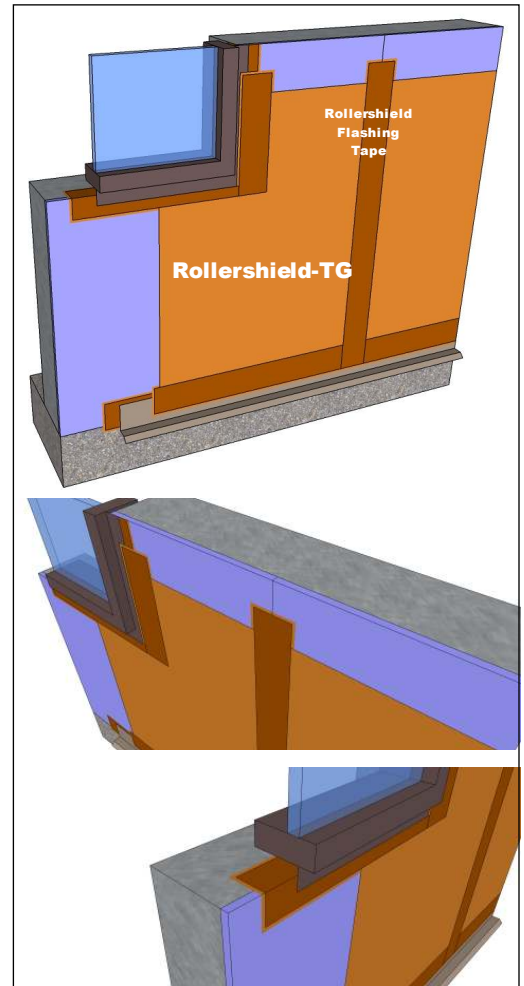
Application - Rollershield-TG and Rollershield Flashing Tape may be used in lieu of the Rollershield-RS product at seam joints that require additional filling capability. Apply Rollershield-TG by first covering the seam with wet Rollershield-TG, then embedding the Rollershield Flashing Tape. Rollershield-TG may also be used for spotting fasteners or for leveling wall surfaces, especially those that are porous such as CMU or pitted concrete. Trowel to a minimum 15 mils wet, 10 mils dry thickness with no breaks or skips, although some areas will appear lighter than others due to the application process. The Rollershield-TG application need not look like a painted surface.

Rollershield-TG may be flashed into window, door and other openings.

Approved Substrates

Exterior gypsum sheathing (ASTM C1396)
Dens Glass Gold®
GlasRoc®
FiberBond®
Gold Bond e2xp®
Durock®
PermaBase®
ProTEC®
Util-A-Crete®
Concrete
Brick
Masonry
Exterior Plywood
Oriented Strand Board
Others approved in writing

Limitations - Not for use as an exterior finish, note exposure limitations on front page.



Information contained in this product data sheet conforms to the standard detail recommendations and specifications for the installation of Master Wall Inc.® products and is presented in good faith. Master Wall Inc.® assumes no liability, expressed or implied as to the architecture, engineering, or workmanship of any project. This information may be concurrent with, or superseded by other applicable documents, such as specifications and details. Contact Master Wall Inc.® for the most current product information. ©2016 Master Wall Inc.®

Master Wall Inc.®
Building a Culture of Excellence
masterwall.com

PO Box 397 • Fortson • GA • 31808 • 800-755-0825 • Tech: 800-760-2861