



# Submittal Package

---

## Rollershield Drainage EIFS

*Project:*

*Location:*

*Architect:*

*General Contractor:*

*Applicator:*

### *Benefits of Master Wall*

- American owned and privately managed, our focus is the customer
- 20+ year track record, projects from coast to coast
- Quality products featuring 100% pure acrylic polymers
- Dedicated to the EIFS & Stucco Markets, it's **what** we do, not part of what our company does
- Experienced Staff—100+ years of experience
- Service—we provide it!
  - Job site visits
  - Color matching
  - Architectural Support
  - Samples
  - Plan, detail and technical reviews
- Dedicated to a culture of excellence

More Information



Rollershield Drainage EIFS

### *Submittal Information:*

- *System Data Sheets*
- *Product Data Sheets*
- *Specifications*
- *Details*
- *Sample Labor/Material Limited Warranty*

Manufactured by



P. O. Box 397  
Fortson, GA 31808  
800-755-0825  
Technical 800-760-2861  
[www.masterwall.com](http://www.masterwall.com)



07 24 19

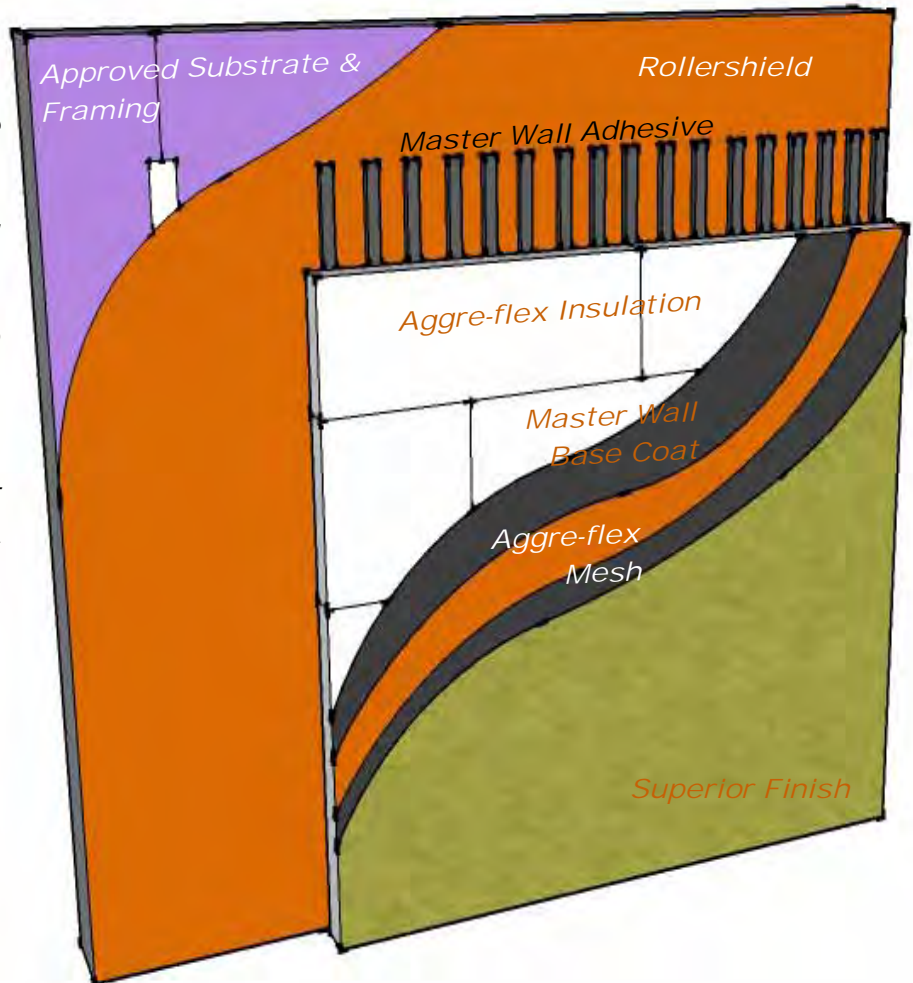
# Rollershield Drainage

Drainage EIFS with a Liquid Applied Air & Water Barrier

Master Wall's Rollershield Drainage Class PB Exterior Insulation and Finish System is a high performance commercial wall cladding. It uses a roll-applied air and water barrier that can be used as a flashing-type material. Vertical adhesive channels drain away any incidental water entering the system. This highly adaptable cladding is suitable for both new and retrofit construction.

## Features & Benefits

- 99% Drainage Efficiency
- High Insulating Value (R-4 per inch)
- CFC & HCFC Free Insulation Board, Recyclable
- Medium Impact Resistance is standard



## System Uses



©2011 Master Wall Inc.

P. O. Box 397  
Fortson, GA 31808  
800-755-0825  
Technical 800-760-2861  
masterwall.com

050111

# Rollershield Drainage Short Form Specification

07 24 19



## 1.0 General

This is a short form specification. Refer to Aggre-flex Rollershield EIFS specifications and details for additional information.

### 1.1 System Description

The Master Wall Aggre-flex Rollershield Exterior Insulation and Finish System (EIFS) is a Class PB (Polymer Based) EIF System consisting of a roll-applied water barrier, adhesive attachment, insulation board, reinforcing mesh and a textured finish.

### 1.2 Design Requirements:

- A. Reference Master Wall suggested details and architectural drawings for specific detail requirements.
- B. Slope all surfaces a minimum of 1:2 (6" in 12") to shed water, maximum 12" (305mm) wide.
- C. Maximum deflection of substrates shall not exceed L/240.
- D. Typical acceptable substrates include unpainted brick, masonry, concrete or Dens Glass Gold® (ASTM C-1177). Contact Master Wall for other approved substrates.
- E. Expansion joints are required in the cladding at building expansion joints, panel joints, floor lines in wood framed construction, and other areas where significant movement occurs.

### 1.3 Quality Assurance

- A. The system shall be tested for: Accelerated weathering, mildew resistance, salt spray resistance and structural performance.
- B. The system shall have been tested for fire performance in accordance with ASTM E-108, ASTM E-84, UBC 26-9, and Radiant Heat.
- C. The system shall have been tested for water resistance in accordance with ASTM E-331.

### 1.4 Job Conditions

- A. Store all materials protected from weather and direct sunlight at temperatures above 40°F (5°C).
- B. The ambient and wall temperature shall be a minimum of 40°F (5°C) and shall remain so for at least 24 hours after installation.

See full specifications and details at [masterwall.com](http://masterwall.com)

## 2.0 Products

All components of the Rollershield System shall be manufactured by Master Wall and supplied by an authorized distributor.

### A. Water Barrier & Flashing Tapes:

1. *Rollershield*: A 100% pure acrylic-based roll-applied weather-resistive barrier.
2. *Trowelshield*: A 100% pure acrylic-based trowel grade water-resistive barrier.
3. *Rollershield Mesh Tape*: A lightweight joint treatment material.
4. *Rollershield Flashing Tape*: A lightweight non-woven joint treatment material.

### B. Master Wall Adhesives:

1. *Foam & Mesh Adhesive (F&M)*: A 100% pure acrylic-based adhesive that is field mixed with Portland cement.
2. *F&M Plus*: A high-build 100% pure acrylic-based fiber reinforced adhesive that is field mixed with Portland cement.
3. *Master Wall Bagged Base (MBB)*: A ready to use dry base that is field mixed with water.

### C. *Master Wall Insulation Board*: Molded Expanded Polystyrene insulation board manufactured to Master Wall specifications.

### D. *Aggre-flex Mesh*: Available in Standard, Detail, Hi-Tech, Medium, Strong and Ultra.

### E. Master Wall Base Coats:

1. *Foam & Mesh Adhesive (F&M)*
2. *F&M Plus*
3. *Master Wall Bagged Base (MBB)*
4. *Guardian*: A waterproof 100% pure acrylic-based fiber reinforced adhesive that is field mixed with Portland cement.

### F. *Superior Finish*: 100% pure acrylic formulation with integral color and texture. Perfect, Spray, Desert Sand, R-Coarse and Refinish textures.

### G. Master Wall Coatings:

1. *Primecoat & Sanded Primecoat*: A water-based primer.
2. *Roller-flex*: A water-based architectural finish coating.

## 3.0 Installation

- A. Inspect the substrate to ensure that it is free of all foreign materials that would affect the adhesion of the Aggre-flex Rollershield EIFS System.
- B. Apply the system in strict accordance with Master Wall specifications, product data sheets, architectural drawings and architectural specifications.

# SUPERIOR *finishes*

*Integrally Colored Textured Acrylic Finishes*



*Perfect Texture*



*Spray Texture*



*Desert Sand Texture*



*R-Coarse Texture*



*Refinish Texture*



**M** Master Wall Inc.  
*Building a Culture of Excellence*



Superior Finish is Master Wall's textured finish line. Available in standard or custom colors, Superior Finishes may be applied over Master Wall Base Coats or prepared substrates including brick, masonry, concrete and stucco. Superior Finishes work great for interior applications as well. Superior Finish is available in five-gallon (19L) pails and is typically troweled onto the wall surface with a stainless steel trowel.

### Estimated Coverage

Perfect: 120-150 sf/pail (11-14 sm)  
 Spray SS: 215-225 sf/pail (20-21 sm)  
 Desert Sand SS: 130-150 sf/pail (12-14 sm)  
 R-Coarse: 90-120 sf/pail (8.4-11 sm)  
 Perfect West: 140-160 sf/pail (13-15 sm)  
 Refinish: Varies with Texture

Coverage will vary by application, applicator skill and substrate conditions. Master Wall assumes no responsibility nor liability for coverage.

### Finish Properties

Meets or Exceeds:  
 ASTM E84 Surface Burning  
 ASTM E108 Flame Spread  
 ASTM C67 Freeze/Thaw  
 ASTM E2485/2570 Freeze/Thaw  
 ASTM D2247/E2570 Humidity  
 ASTM D3273 Mold/Mildew  
 ASTM D968 Abrasion  
 ASTM B117 Salt Spray  
 ASTM G53 Weathering  
 ASTM G23/G154/G155 Weathering

### Approved Substrates

Master Wall Base Coats  
 Stucco  
 Prepared & Base Coated Surfaces of:  
 Brick  
 Concrete  
 Masonry  
 Others approved in writing

### Statistics

Pail Weight: 70 lbs (32 kg), Refinish 65 lbs (29.5 kg)

Working Time: 1/4 hour @ room temperature

Drying Time: 8-12 hours to set, 48-72 hours to dry @ room temperature. High pigment levels, low temperatures, high humidity extend dry times.

Application Range: 40°-110°F (5°-43°C)

Shelf Life: 2 years

### Application Procedure

**Job Conditions** - Air and substrate temperature for application of Superior Finishes must be 40°F (5°C) or higher and must remain 40°F (5°C) or higher for a minimum of 24 hours. Provide temporary protection to protect the wall system from damage until permanent flashings, caps and sealants are installed. Store materials within prescribed temperature limits and out of direct sunlight. High temperatures will reduce working times, Low temperatures and/or high humidity will extend working, set and dry times.

**Preparation** - The substrate must be approved by Master Wall Inc., clean, dry, structurally sound and free of efflorescence, oil, grease, form release agents and curing compounds or anything that would affect bond. Painted surfaces are not acceptable and must be removed. Concrete and surfaces should cure for a minimum of 28 days. Stucco should be cured until clean, dry and hard—typically 14 days.

Interior drywall should be finished and made ready for paint. Prime surfaces with Primecoat/Sanded Primecoat primer prior to finishing.

**Base Coats** - Must be flat, dry hard, and free of efflorescence. Master Wall base coats must cure a minimum of 12 hours before application of Superior Finish. Substrates of brick, masonry or concrete should be leveled smooth using either Master Wall base coats or stucco.

**Mixing** - Thoroughly stir Superior Finish using a heavy duty 1/2" drill at 400 - 500 rpm and a heavy duty mixing paddle. Small amounts of clean, potable water may be added to obtain a workable consistency. To avoid color variations, add the same amount of water to each pail. Do not exceed 24 ounces (0.7L) of water per pail of finish.

**Application** — Apply a uniform thickness (about 1/16") of Superior Finish to the substrate using a stainless steel trowel. Spread evenly and then scrape the finish coat down to a thickness no greater than the largest aggregate in the material. Immediately float the finish coat using a plastic float to the desired texture. Always maintain a wet edge to achieve uniformity of texture and color.

### For Professional Results

- Apply finish coats away from direct sunlight. Cold joints or color variations can occur if the finish dries too quickly.

- Consider priming stucco surfaces with Primecoat/Sanded Primecoat to even out finish absorption.
- Surfaces exposed to the weather must be sloped (6:12 minimum).
- Under certain conditions dark colors may show efflorescence on the surface during the cure process.
- Finishes are intended for the approved substrates listed above and should not be applied directly to gypsum board or insulation board products.

**Clean Up**—Tools and equipment can be cleaned with soapy water while the Superior Finish is still wet.

### Available Options



Elastomeric Additive



Silicone Additive



Excel Mildew Additive



**Master Wall Inc.**  
 Building a Culture of Excellence

P. O. Box 397  
 Fortson, GA 31808

800-755-0825

Technical 800-760-2861

masterwall.com

050111

Information contained in this product data sheet conforms to the standard detail recommendations and specifications for the installation of Master Wall Inc. products and is presented in good faith. Master Wall Inc. assumes no liability, expressed or implied as to the architecture, engineering, or workmanship of any project. This information may be concurrent with, or superseded by other applicable documents, such as specifications and details. Contact Master Wall Inc. for the most current product information.



*Foam & Mesh Adhesive (F&M) is a high performance base coat and adhesive used in Master Wall Systems or over prepared substrates including brick, masonry, concrete and stucco. F&M is available in five-gallon (19L) pails and is mixed 1:1 with Portland cement to a creamy consistency. F&M trowels out smoothly with a stainless steel trowel and is the premium choice for embedding mesh or leveling walls.*

## Foam & Mesh Adhesive & Base Coat

### Application Procedure

**Job Conditions** - Air and substrate temperature for application of F&M must be 40°F (5°C) or higher and must remain 40°F (5°C) or higher for a minimum of 24 hours. Provide temporary protection to protect the wall system from damage until permanent flashings, caps and sealants are installed. Store materials within prescribed temperature limits and out of direct sunlight. Working and drying times are based upon normal room temperature conditions and will vary with temperature and humidity.

**Preparation** - The substrate must be approved by Master Wall Inc., clean, dry, structurally sound and free of efflorescence, oil, grease, form release agents and curing compounds or anything that would affect bond. Painted surfaces are not acceptable and must be removed.

**Mixing** - Thoroughly stir F&M using a heavy duty 1/2" (12.7 mm) drill at 400 - 500 rpm and a heavy duty mixing paddle. Pour half of the stirred F&M into a clean plastic pail. Add Type I or I-II Portland cement to the half pail of F&M in a ratio of one-to-one by weight and mix to a homogenous consistency. Let the mixture stand for 3 to 5 minutes and then stir to a creamy consistency. Up to 30 ounces (0.9L) of clean, potable water may be added to a half pail to adjust workability. Do not over mix as faster setting or reduced working time can occur. Do not add accelerators or retarders to the F&M mixture.

### Application

Adhesive application – Over gypsum substrates, apply the F&M mixture directly to the back of the insulation board using a 3/8"x3/8"x3/8" (9.5x9.5x9.5 mm) or a 3/8"x1/2"x1-1/2" (9.5x13x38 mm) stainless steel notched trowel. With the trowel at a 45° angle, cover the entire back of the insulation board with full beads of adhesive. Apply the adhesive so the ribbons run vertically when applied to the wall.

Over non-gypsum substrates, you may use the above described notched trowel method or the 'ribbon and dab' method. Using a stainless steel plastering trowel, apply a 2" (50.8 mm) wide by 3/8" (9.5 mm) high ribbon of the F&M mixture around the entire perimeter of the insulation board. Place 8 dabs of the F&M mixture 3/8" (9.5 mm) thick by 4" (102 mm) in diameter approximately 8" (204 mm) on center inside the ribbon.

Immediately place the prepared insulation board on the substrate. Make sure that all edges of the insulation board are abutted tightly and that no F&M mixture gets into the board joints. Do not allow the F&M mixture to form a skin prior to placing the insulation board on the substrate. Do not apply the F&M mixture directly onto the substrate.

For base coat application – All imperfections in the insulation board must be rasped flush and any gaps in the insulation board must be filled with slivers of insulation. Apply the F&M mixture over the entire surface of the insulation board in a thickness greater than that of the reinforcing fabric being used (approximately 1/16" (1.6 mm) for standard mesh and 3/32" (2.4 mm) for Ultra Mesh). Immediately embed the reinforcing fabric into the wet F&M mixture and smooth from the center to the edge to avoid wrinkles. The reinforcing fabric must be continuous at all corners and lapped or abutted in accordance to Master Wall specifications. The color of the mesh shall not be visible but a slight mesh pattern may be visible.

### Statistics

#### Coverage (Estimated/varies)

Adhesive & Standard Base: 120 sf (11 sm)  
 Single Layer Mesh Only : 240-280 sf (22-26 sm)  
 Double Layer Mesh Only: 80-230 sf (7.5-21 sm)  
 Notched Trowel Only: 135 sf (12.5 sm)

Pail Weight: 60 lbs (27kg)

Working Time: 1 hour @ room temperature

Drying Time: 12 hours @ room temperature

Application Range: 40°-110°F (5°-43°C)

Shelf Life: 2 years

**Clean Up**—Tools and equipment can be cleaned with soapy water while the F&M is still wet.

### Approved Substrates

- Exterior gypsum sheathing (ASTM C79, C1177)
- Dens Glass Gold®
- GlasRoc®
- FiberBond®
- Gold Bond e<sup>2</sup>xp®
- Securock®
- Durock®
- PermaBase®
- Util-A-Crete®, ProTEC®, ProGUARD®
- Concrete
- Brick
- Masonry
- Metal Lath
- Others approved in writing



Information contained in this product data sheet conforms to the standard detail recommendations and specifications for the installation of Master Wall Inc. products and is presented in good faith. Master Wall Inc. assumes no liability, expressed or implied as to the architecture, engineering, or workmanship of any project. This information may be concurrent with, or superseded by other applicable documents, such as specifications and details. Contact Master Wall Inc. for the most current product information.

P. O. Box 397  
 Fortson, GA 31808  
 800-755-0825  
 Technical 800-760-2861  
[www.masterwall.com](http://www.masterwall.com)



*Master Wall Bagged Base (MBB) is a dry version of*

## Master Wall Bagged Base

**Adhesive & Base Coat**

*our Foam & Mesh Adhesive (F&M). Use MBB as an adhesive or base coat in Master Wall Systems or over prepared substrates including brick, masonry, concrete and stucco. MBB is freeze stable in dry form and is easily mixed with clean potable water to a creamy consistency.*

### Application Procedure

**Job Conditions** - Air and substrate temperature for application of *MBB* must be 40°F (5°C) or higher and must remain 40°F (5°C) or higher for a minimum of 24 hours. Provide temporary protection to protect the wall system from damage until permanent flashings, caps and sealants are installed. Store materials within prescribed temperature limits and out of direct sunlight. Working and drying times are based upon normal room temperature conditions and will vary with temperature and humidity.

**Preparation** - The substrate must be approved by Master Wall Inc., clean, dry, structurally sound and free of efflorescence, oil, grease, form release agents and curing compounds or anything that would affect bond. Painted surfaces are not acceptable and must be removed.

**Mixing** - Add 5 to 6 quarts (4.7-5.7L) of potable water to a clean plastic pail. Add the *MBB* slowly while stirring using a heavy-duty 1/2" (12.7 mm) drill at 400 - 500 rpm and a heavy-duty Mixer. Mix thoroughly to a homogenous consistency. Let the mixture stand for 3 to 5 minutes and then stir to a creamy consistency. Small amounts of clean, potable water may be added to obtain a workable consistency. Do not over mix. Excessive stirring may cause faster setting and reduced working time. Do not add accelerators or retarders to the *MBB* mixture.

### Application

Adhesive application – Over gypsum substrates, apply the *F&M* mixture directly to the back of the insulation board using a 3/8"x3/8"x3/8" (9.5x9.5x9.5 mm) or a 3/8"x1/2"x1-1/2" (9.5x13x38 mm) stainless steel notched trowel. With the trowel at a 45° angle, cover the entire back of the insulation board with full beads of adhesive. Apply the adhesive so the ribbons run vertically when applied to the wall.

Over non-gypsum substrates, you may use the above described notched trowel method or the 'ribbon and dab' method. Using a stainless steel plastering trowel, apply a 2" (50.8 mm) wide by 3/8" (9.5 mm) high ribbon of the *MBB* mixture around the entire perimeter of the insulation board. Place 8 dabs of the *MBB* mixture 3/8" (9.5 mm) thick by 4" (102 mm) in diameter approximately 8" (204 mm) on center inside the ribbon.

Immediately place the prepared insulation board on the substrate. Make sure that all edges of the insulation board are abutted tightly and that no *MBB* mixture gets into the board joints. Do not allow the *MBB* mixture to form a skin prior to placing the insulation board on the substrate. Do not apply the *MBB* mixture directly onto the substrate.

For base coat application – All imperfections in the insulation board must be rasped flush and any gaps in the insulation board must be filled with slivers of insulation. Apply the *MBB* mixture over the entire surface of the insulation board in a thickness greater than that of the reinforcing fabric being used (approximately 1/16" (1.6 mm) for standard mesh and 3/32" (2.4 mm) for Ultra Mesh). Immediately embed the reinforcing fabric into the wet *MBB* mixture and smooth from the center to the edge to avoid wrinkles. The reinforcing fabric must be continuous at all corners and lapped or abutted in accordance to Master Wall specifications. The color of the mesh shall not be visible but a slight mesh pattern may be visible.

### Statistics

#### Coverage (Estimated/Varies)

Adhesive & Standard Base: 50-60 sf (4.6-5.6 sm)

Single Layer Mesh Only : 100-125 sf (9-11.5 sm)

Double Layer Mesh Only: 30-110 sf (2.5-10 sm)

Notched Trowel Only: 56 sf (5.2 sm)

Bag Weight: 50 lbs (22.7kg)

Working Time: 1 hour @ room temperature

Drying Time: 12 hours @ room temperature

Application Range: 40°-110°F (5°-43°C)

Shelf Life: 1 year

**Clean Up**—Tools and equipment can be cleaned with soapy water while the *MBB* is still wet.



Information contained in this product data sheet conforms to the standard detail recommendations and specifications for the installation of Master Wall Inc. products and is presented in good faith. Master Wall Inc. assumes no liability, expressed or implied as to the architecture, engineering, or workmanship of any project. This information may be concurrent with, or superseded by other applicable documents, such as specifications and details. Contact Master Wall Inc. for the most current product information.

### Approved Substrates

- Exterior gypsum sheathing (ASTM C79)
- Dens Glass Gold®
- GlasRoc®
- FiberBond®
- Gold Bond e<sup>2</sup>xp®
- Durock®
- PermaBase®
- Util-A-Crete®, ProTEC®, ProGUARD®
- Concrete
- Brick
- Masonry
- Metal Lath
- Others approved in writing



# Aggre-flex Mesh



Master Wall Aggre-flex Mesh is a specially woven, **AR Glass Fiber** glass fiber mesh with AR Coating (Alkali Resistive). **Master Wall Systems**

Embedded in Master Wall base coats, Aggre-flex Mesh is the key impact and tensile component in Master Wall EIFS and wall systems. It can also improve crack resistance in Master Wall Stucco Systems or traditional stucco.

## General

### Mesh Properties

ASTM D76, D578, D579, D3659, D4029, D5035, E2098, E2486 MIL-Y-1140

Weave: Leno

Mesh	Weight	Roll Size	Tensile (warp/fill)	Coverage*
<b>Detail</b>	4.5 oz/sy (113 g/sm)	9.5" x 150' (96.5cm x 45.7m)	140/150	119 sf (11 sm)
<b>Standard</b>	4.5 oz/sy (113 g/sm)	38" x 150' (96.5cm x 45.7m)	140/150	475 sf (44.1 sm)
<b>Hi-Tech</b>	6.0 oz/sy (202 g/sm)	38" x 150' (96.5cm x 45.7m)	140/250	475 sf (44.1 sm)
<b>Medium</b>	12.0 oz/sy (313 g/sm)	38" x 75' (96.5cm x 22.8m)	300/500	238 sf (22.1 sm)
<b>Strong</b>	15.4 oz/sy (508 g/sm)	38" x 75' (96.5cm x 22.8m)	350/600	238 sf (22.1 sm)
<b>Ultra</b>	21.0 oz/sy (675 g/sm)	38" x 75' (96.5cm x 22.8m)	750/500	238 sf (22.1 sm)
<b>Corner Roll</b>	9.5 oz/sy (238 g/sm)	9.5" x 150' (96.5cm x 45.7m)	274/274	150 lf (45.7 m)

\*Allow about 10% waste for lapping all meshes (Strong, Ultra and Corner Roll Meshes are butted). Coverage will vary.

## Mesh Types

**Detail Mesh** – super soft, pliable mesh used for backwrapping, special shapes, and detail work.

**Standard Mesh** – Standard weight mesh for wall areas and general detailing.

**Hi-Tech Mesh** – Upgraded heavier weight version of *Standard Mesh* with good workability.

**Medium Mesh** – Extra tough heavy weight mesh. Best for areas of light traffic.

**Strong Mesh** – Great high traffic mesh where impacts are a consideration.

**Ultra Mesh** – Best where abuse is expected. Ultra heavy for high traffic areas.

*Strong Mesh and Ultra Mesh must be used in a two-layer system with Standard Mesh, Hi-Tech Mesh, or Medium Mesh.*

**Corner Roll**– For highly impact resistant corners. Apply under Standard or higher mesh.

## Application Procedure

**Job Conditions** - Air and substrate temperature for application of the *Reinforcing Mesh* must be 40°F (5°C) or higher and must remain 40°F (5°C) or higher for a minimum of 24 hours. Provide temporary protection at all times until the wall system, including flashings, caps, and sealants, is completed to provide protection from climatic conditions and other potential damage.

**Application** - All imperfections in the insulation board must be rasped flush and any gaps in the insulation board must be filled with slivers of insulation. Apply the base coat over the entire surface of the insulation board in a thickness greater than that of the *Reinforcing Mesh* being used, approximately 1/16" (1.6 mm) for Standard Mesh and 3/32" (2.4 mm) for Ultra Mesh. Immediately embed the *Aggre-flex Mesh* into the wet base coat and smooth from the center to the edge to avoid wrinkles. Lap all meshes except Strong Mesh and Ultra Mesh a minimum of 2-1/2" (63.5 mm) on all sides. The reinforcing fabric must be continuous at all corners and lapped or abutted in accordance to Master Wall specifications. The color of the mesh shall not be visible but a slight mesh pattern may be visible. The overall minimum thickness of the base coat should be a nominal 1/16" (1.6 mm) when dry.

When applying **Strong, Ultra or Corner Roll Mesh**, tightly abut all edges and let cure for a minimum of 12 hours. Grind any imperfections with the edge of a stainless steel trowel or grinding stone, taking care not to damage the *Aggre-flex Mesh*, and apply a layer of **Standard Mesh, Hi-Tech Mesh, or Medium Mesh** as per the directions in the preceding paragraph. To minimize wall variations, the lap of the second mesh layer should not coincide with the abutment of the first layer.

### Special Conditions and Recommendations

Apply backwrapping mesh or other approved accessory at all terminations of the insulation board. This includes at the top and bottom of all walls and at all openings.

*Aggre-flex Mesh* may be wrapped from the face of the insulation board onto a foundation or onto the studs of an opening on barrier wall systems. In all cases, the exposed edges of the insulation board must be wrapped with *Aggre-flex Mesh* and base coat or an approved accessory trim.

### Impact ASTM E2486 (Formerly EIMA 101.86)

Standard Mesh	Medium Impact Resistance	50-89 in-lbs (5.7-10.1J)
Hi Tech Mesh	Medium Impact Resistance	50-89 in-lbs (5.7-10.1J)
Medium Mesh	Medium Impact Resistance	50-89 in-lbs (5.7-10.1J)
Medium & Standard	High Impact Resistance	90-150 in-lbs (10.2-17.0J)
Strong & Standard	High Impact Resistance	90-150 in-lbs (10.2-17.0J)
Ultra & Standard	Ultra High Impact Resistance	150+ in-lbs (over17.0J)



Information contained in this product data sheet conforms to the standard detail recommendations and specifications for the installation of Master Wall Inc. products and is presented in good faith. Master Wall Inc. assumes no liability, expressed or implied as to the architecture, engineering, or workmanship of any project. This information may be concurrent with, or superseded by other applicable documents, such as specifications and details. Contact Master Wall Inc. for the most current product information.

P. O. Box 397  
Fortson, GA 31808

800-755-0825

Technical 800-760-2861

masterwall.com

# Insulation Board

## Manufactured for Master Wall Systems Molded Expanded Polystyrene

*Master Wall Insulation Board is a high performance insulation material that is used to wrap the entire building to keep interior temperatures more consistent. It helps to reduce thermal bridging at framing members and is easy to cut, rasp and place. It may be custom formed into various decorative shapes. Packaged in 144 board foot bundles, each bundle weights approximately 12 lbs (5.44 kg) and is available in flat or drainage configurations.*

### Properties

Meets or Exceeds:

ASTM C578, C273, D1623, E2430, E2568

Classification: Type I

Density, lb/ft<sup>3</sup> (kg/m<sup>3</sup>):

0.95 (15.2) min., 1.25 (20.0) max.

Thermal Resistance per inch (25.4mm) thickness, min. Ft<sup>2</sup>.h/Btu (K\*m<sup>2</sup>/W):

@40°F (4.4°C) 4.00 (0.70)

@75°F (23.9°C) 3.60 (0.63)

Compressive strength, min., PSI (kPa): 10.0 (69)

Tensile strength min., PSI (kPa): 15.0 (103)

Flexural Strength, min., PSI (kPa) : 25.0 (172)

Shear modulus, max., PSI (kPa): 400 (2758)

Water Vapor Permeance of 1.00 in (25.2 mm) thickness, max., perm (ng/Pa.s.m<sup>2</sup>): 5.0 (2.87)

Water absorption by total immersion, max., volume, % : 2.5

Dimensional stability (change in dimensions), max., %: 2.0

Oxygen index, min., volume, %: 24.0

Flame spread, max.: 25.0

Smoke development, max. 450

Board thickness:

Maximum 4" (102mm)

Minimum 3/4" (19.1mm)

Drainage Board min. 1-1/2" (38.2 mm)

Board width, max.: 24" (610mm)

Board length, max.: 48" (1219mm)

### Estimated Coverage by Thickness

Varies by manufacturer facility:

- **3/4" (19.2 mm):** 24 pcs, 192 sf (17.84 sm)
- **1" (25.2 mm):** 18 pcs, 144 sf (13.38 sm)
- **1-1/2" (38.2 mm):** 12 pcs, 96 sf (8.92 sm)
- **2" (50.8 mm):** 9 pcs, 72 sf (6.69 sm)
- **3" (76.2 mm):** 6 pcs, 48 sf (4.46 sm)
- **4" (101.6 mm):** 5 pcs, 40 sf (3.72 sm)

### Application Procedure

**Job Conditions** - Follow directions on adhesive data sheets. Mechanical attachment of insulation boards may be performed at lower temperatures over a dry surface.

**Temporary Protection** – Provide temporary and permanent protection to prevent water entry behind the system.

**Substrate Preparation** – Applications must be to an approved substrate with a maximum variation tolerance of 1/4" in 10'-0" (6.4 mm in 3.05m). Contact Master Wall for approved substrates and recommended attachment methods.

### Application

The *Insulation Board* can be easily cut using handsaws, power saws, sharp knives, or thermal cutting tools. Rasping of the Insulation Board is completed with 12 grit sandpaper, manually or with air or electric rasping machines.

Follow data sheet recommendations for adhering insulation board to approved substrates. For mechanical attachment, fasten the *Insulation Board* to the approved substrate using Wind-Lock Wind-Devil 2 retainers. See Master Wall System Details for more information. Fastening patterns shall be determined by the requirements of the geographical conditions of the area, local code requirements, and the performance of the fasteners, retainers and their test results in conjunction with the specified substrate and the thickness of MEPS specified for use. Minimum 1" (25.2 mm) thickness for mechanically attached systems.

Install insulation board on the wall according to specification requirements. For further information and details, see the Master Wall System Application Instructions.

### Limitations

- The minimum required thickness for MEPS in the Master Wall Aggre-flex PB EIF System is 3/4" (19.2 mm) at any location on the wall.
- The maximum thickness for MEPS is 4" (102 mm) as set by most building code agencies for noncombustible construction.
- MEPS shall not be used in interior applications.
- Residential applications require a secondary water barrier and mechanical attachment with the option of flat or drainage insulation board. See Aggre-flex Drainage Details for insulation board construction.



Information contained in this product data sheet conforms to the standard detail recommendations and specifications for the installation of Master Wall Inc. products and is presented in good faith. Master Wall Inc. assumes no liability, expressed or implied as to the architecture, engineering, or workmanship of any project. This information may be concurrent with, or superseded by other applicable documents, such as specifications and details. Contact Master Wall Inc. for the most current product information.

P. O. Box 397  
Fortson, GA 31808

800-755-0825

Technical 800-760-2861

[masterwall.com](http://masterwall.com)



# Rollershield



Rollershield is a high quality 100% acrylic roll applied flexible air and water barrier.

## Air/Water Barrier

Roller or Spray Application

Easily applied with brush, roller or airless sprayer, it helps protect approved substrates from incidental water damage. Rollershield is available in five-gallon (19L) pails and is ready for use after pre-mixing.

### Approved Substrates

- Exterior gypsum sheathing (ASTM C79)
- Dens Glass Gold®
- GlasRoc®
- FiberBond®
- Gold Bond e<sup>2</sup>xp®
- Durock®
- PermaBase®
- Concrete
- Brick
- Masonry
- Exterior Plywood
- Oriented Strand Board
- Others approved in writing

### Application Procedure

**Job Conditions** - Air and substrate temperature for application of Rollershield must be 40°F (5°C) or higher and must remain 40°F (5°C) or higher for a minimum of 24 hours. Provide temporary protection to protect the wall system from damage until permanent flashings, caps and sealants are installed. Store materials within prescribed temperature limits and out of direct sunlight. Working and drying times are based upon normal room temperature conditions and will vary with temperature and humidity.

**Preparation** - The substrate must be approved by Master Wall Inc., clean, dry, structurally sound and free of efflorescence, oil, grease, form release agents and curing compounds or anything that would affect bond. Painted surfaces are not acceptable and must be removed. Substrates must be flat and free of fins or planar irregularities greater than 1/4" in 10'-0" (6.35 mm in 3.05m).

**Concrete** – Must have cured a minimum of 28 days prior to the application of Rollershield. If form release agents or curing compounds exist on the surface, they must be removed with a solution of muriatic acid or similar product (with appropriate precautions). Remove any residual acid by flushing with water.

**Brick/Masonry** – If joints are not struck flush, multiple coats may be required. Contact Master Wall for more information.

**Sheathing Applications** - Sheathing gaps must be less than 1/4" (6.4 mm). For gaps larger than 1/4" (6.4 mm) WeatherStop Tape or Rollershield Flashing Tape may be used. Gap wood-based sheathing per manufacturers recommendations, typically 1/8" (3.2 mm) minimum.

**Mixing** - Thoroughly stir Rollershield into a homogenous consistency. Do not add water, over mix, or add accelerators or retarders to Rollershield.

**Application** – Rollershield is applied by first treating the joints and fastener locations where sheathing is used, then coating the entire surface using brush, roller, trowel or airless spray equipment techniques. When using a foam roller, a maximum 3/4" (19 mm) nap is recommended. Apply Rollershield in an even, continuous coat, maintaining a wet edge of approximately 15 mils thickness. Oriented Strand Board and other porous substrates require two (2) coats of Rollershield. For moisture protection, Rollershield must be applied as a continuous barrier of 10 mils dry thickness with no breaks or skips, although some areas will appear lighter than others due to the application process. The Rollershield application need not look like a painted surface.

**Joint Treatment**—Place and center Rollershield Mesh over all joints, corners and gaps in the substrate. Immediately embed Rollershield into the reinforcing mesh and spot fasteners using a paint brush or trowel and allow to dry. Alternatively apply a thin layer of Rollershield to the joints and embed Rollershield Flashing Tape into the wet mixture and trowel smooth. Rollershield may be flashed into window, door and other openings using the same techniques. Any remaining gaps should be filled with Master Wall Trowelshield or Trowelshield and Mesh may be used as the joint treatment.

**Wall Treatment**—Apply Rollershield to the wall surface using the foam roller or by spray applying and backrolling to a uniform thickness of 10 mils with no pinholes or voids.

**Clean Up**—Tools and equipment can be cleaned with soapy water when Rollershield is wet.

**Limitations** - Not for use as an exterior finish.

### Statistics

#### Coverage (Estimated/varies)

Per Pail: 450-500 sf (42-46 sm)

Pail Weight: 60 lbs (27kg)

Dry to Touch: 1 hour @ room temperature

Recoat Time: 2 hours @ room temperature

Drying Time: 12 hours @ room temperature

Application Range: 40°-110°F (5°-43°C)

Exposure: 30 days maximum

Shelf Life: 2 years



Information contained in this product data sheet conforms to the standard detail recommendations and specifications for the installation of Master Wall Inc. products and is presented in good faith. Master Wall Inc. assumes no liability, expressed or implied as to the architecture, engineering, or workmanship of any project. This information may be concurrent with, or superseded by other applicable documents, such as specifications and details. Contact Master Wall Inc. for the most current product information.

P. O. Box 397  
Fortson, GA 31808  
800-755-0825  
Technical 800-760-2861  
[www.masterwall.com](http://www.masterwall.com)



# Rollershield Mesh



*Master Wall Rollershield Mesh is a self-adhesive mesh is a lightweight woven, glass fiber mesh that is specially coated for compatibility with Master Wall Rollershield. The self-adhesive properties allow easier application with Rollershield.*

## Lightweight Mesh With Adhesive Coating

### Mesh Properties

ASTM C474

ASTM C475

Weave: 20x10

### Widths & Packaging

1-7/8" x 300' (47.6 mm x 91.4 m)

Coverage Estimate (4x8 sheets)

Square Footage x 0.37 = linear feet of mesh

Add linear footage around windows, doors and other openings.

(coverage is not guaranteed)

### Application Procedure

**General**—The substrate must be clean, dry, structurally sound and free of efflorescence, oil, grease, form release agents and curing compounds. Painted surfaces are not acceptable and the paint must be removed.

**Job Conditions** - Air and substrate temperature for application of the *Rollershield Mesh* must be 40°F (5°C) or higher and must remain 40°F (5°C) or higher for a minimum of 24 hours.

**Temporary Protection** – Must be provided at all times until the wall system, including flashings, caps, and sealants, is completed to provide protection from climatic conditions and other potential damage.

**Installation** – Apply *Rollershield Mesh* according to Master Wall Specifications. In general, *Rollershield Mesh* is centered on the approved sheathing joints, corners, substrate transitions, etc. prior to the application of the

*Rollershield* weather barrier. Apply *Rollershield Mesh* and immediately paint or trowel *Rollershield* to hold it in place. See *Rollershield* Data Sheet for specific instructions. Lap *Rollershield Mesh* a minimum of 2-1/2" (63.5 mm).

### **Limitations**

*Rollershield Mesh* is not intended for use as the exterior or primary reinforcement of any Master Wall Systems or for use with any other water barriers or base coats except *Rollershield*.



P. O. Box 397  
Fortson, GA 31808

800-755-0825

Technical 800-760-2861

[www.masterwall.com](http://www.masterwall.com)

Information contained in this product data sheet conforms to the standard detail recommendations and specifications for the installation of Master Wall Inc. products and is presented in good faith. Master Wall Inc. assumes no liability, expressed or implied as to the architecture, engineering, or workmanship of any project. This information may be concurrent with, or superseded by other applicable documents, such as specifications and details. Contact Master Wall Inc. for the most current product information.



# Rollershield Flashing Tape



*Rollershield Flashing Tape is a lightweight roll flashing material with superior strength and the ability to bridge most gaps or voids common in construction. It is used at flashing transitions with Master Wall Rollershield air & water barrier applications. The tape easily embeds into wet Rollershield and dries to a highly reinforced yet flexible flashing.*

## Tape Size

Rollershield Flashing Tape is available in the following size rolls:

4"x180' (10.2cm x 54.9m)

## Packaging

Rollershield Flashing Tape is packaged 18 rolls per case.

## Coverage Estimate

(4x8 sheets)

Square Footage x 0.37 = linear feet of tape

Add linear footage around windows, doors and other openings.

(coverage is not guaranteed)

## Application Procedure

**General**—The substrate must be clean, dry, structurally sound and free of efflorescence, oil, grease, form release agents and curing compounds. Test painted surfaces to verify bond.

**Job Conditions** - Air and substrate temperature for application of Rollershield Flashing Tape must be 40°F (5°C) or higher.

**Temporary Protection** - Do not expose to direct sunlight for more than six weeks after installation.

**Surface Preparation** - Surface temperature must be above 40°F (5°C). Surface must be cured, clean, dry, structurally sound and free of efflorescence, oil, grease, form release agents, and curing compounds.

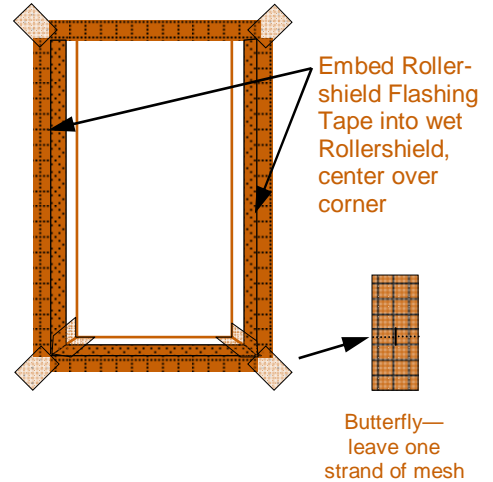
**Approved Substrates**—Include Exterior gypsum sheathing (ASTM C79), Dens Glass Gold®, GlasRoc®, FiberBond®, Durock®, PermaBase®, Securock®, Concrete, Brick, Masonry, Wood, Exterior Plywood, Oriented Strand Board and Metal. Contact Master Wall for other approved substrates.

## Installation

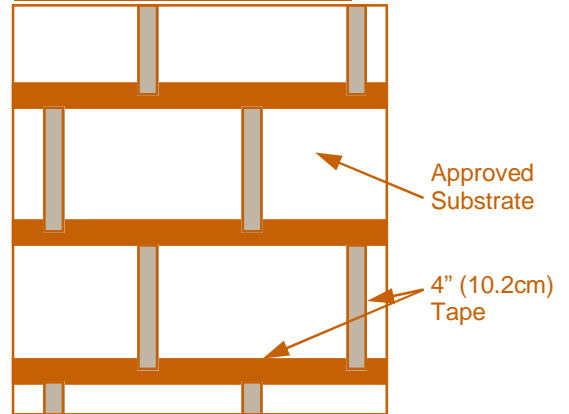
**Windows** - The unique properties of the Rollershield air/water barrier system allows window flashing prior to the Rollershield wall application. Apply Rollershield using a trowel or brush at least 2" (51 mm) either side of the window opening. Immediately embed the Rollershield Flashing Tape into the wet Rollershield and smooth with a trowel, centering it over the corner. Use a "butterfly" at corners to complete the application making sure it covers all corner joints. For best results make sure the Rollershield covers the entire head, jamb and sill areas. The use of sill wedges or water stops is encouraged.

**Sheathing Applications** - Apply Rollershield at least 2" (51 mm) either side of the sheathing board joint. Immediately embed the Rollershield Flashing Tape into the wet Rollershield and smooth with a trowel, centering it over the joint. Lap Rollershield Mesh Tape 2" (51 mm) minimum Rollershield application can begin as soon as the Rollershield is dry to the touch.

## Window Flashing Application



## Sheathing Application



Information contained in this product data sheet conforms to the standard detail recommendations and specifications for the installation of Master Wall Inc. products and is presented in good faith. Master Wall Inc. assumes no liability, expressed or implied as to the architecture, engineering, or workmanship of any project. This information may be concurrent with, or superseded by other applicable documents, such as specifications and details. Contact Master Wall Inc. for the most current product information.

P. O. Box 397  
Fortson, GA 31808  
800-755-0825  
Technical 800-760-2861



---

## PART I – GENERAL

### 1.01 SUMMARY

A. This document is to be used in preparing specifications for projects utilizing the Master Wall Inc. Rollershield Drainage Class PB (polymer-based) drainage type Exterior Insulation and Finish System (EIFS) designed to provide drainage of incidental water entering the system. Related Master Wall Inc. documents:

1. Master Wall Inc. Rollershield Drainage System Data Sheet
2. Master Wall Inc. Rollershield Drainage System Application Instructions
3. Master Wall Inc. Rollershield Drainage System Installation Details
4. Master Wall product data sheets

### B. Related Sections

1. Unit Masonry – Section 04200
2. Concrete – Sections 03300 and 03400
3. Light Gauge Cold Formed Steel Framing – Section 05400
4. Wood Framing – Section 06100
5. Sealant – Section 07900
6. Flashing – Section 07600

### 1.02. REFERENCES

#### A. Section Includes

1. ASTM B 117 (Federal Test Standard 141A Method 6061) Standard Practice for Operating Salt Spray (Fog) Apparatus
2. ASTM C 150 Standard Specification for Portland Cement
3. ASTM C 297 Standard Test Method for Flatwise Tensile Strength of Sandwich Constructions
4. ASTM C 1177 Standard Specification for Glass Mat Gypsum Substrate for Use as Sheathing
5. ASTM C 1396 (formerly C 79) Standard Specification for Gypsum Board
6. ASTM D 968 (Federal Test Standard 141A Method 6191) Standard Test Methods for Abrasion Resistance of Organic Coatings by Falling Abrasive
7. ASTM D 2247 (Federal Test Standard 141A Method 6201) Standard Practice for Testing Water Resistance of Coatings in 100% Relative Humidity
8. ASTM D 3273 Standard Test Method for Resistance to Growth of Mold on the Surface of Interior Coatings in an Environmental Chamber
9. ASTM D 968 Standard Test Methods for Abrasion Resistance of Organic Coatings by Falling Abrasive
10. ASTM E 84 Standard Test Method for Surface Burning Characteristics of Building Materials
11. ASTM E 330 Test Method for Structural Performance of Exterior Windows, Doors and Curtain Walls by Uniform Static Air Pressure Difference
13. ASTM E 331 Test Method for Water Penetration of Exterior Windows, Skylights, Doors and Curtain Walls by Uniform Static Air Pressure Difference.



14. ASTM E 2485 (formerly EIMA Std. 101.01) Standard Test Method for Freeze-Thaw Resistance of Exterior Insulation and Finish Systems (EIFS) and Water-Resistive Barrier Coatings
15. ASTM E 2486 (formerly EIMA Std. 101.86) Standard Test Method for Impact Resistance of Class PB and PI Exterior Insulation and Finish Systems (EIFS)
16. ASTM G 53 Practice for Operating Light- and Water-Exposure Apparatus (Fluorescent UV-Condensation Type) for Exposure of Nonmetallic Materials
17. ASTM G23 Standard Practice for Operating Light-Exposure Apparatus (Carbon-Arc Type) with and without Water for Exposure of Nonmetallic Materials
18. UBC Std 26-9 (Alternative to UBC 17-6) Intermediate Scale Multi-Story Fire Evaluation of Exterior Non Load-Bearing Foam Plastic Insulated Wall Systems
19. NFPA 268 Standard Test Method for Determining Ignitibility of Exterior Wall Assemblies Using a Radiant Heat Energy Source.

### 1.03 DEFINITIONS

- A. Base Coat: Material used to encapsulate one or more layers of reinforcing mesh fully embedded that is applied to the outside surface of the EPS.
- B. Building Expansion Joint: A joint through the entire building structure designed to accommodate structural movement.
- C. Contractor: The contractor that installs the Rollershield Drainage System to the substrate.
- D. Master Wall Inc.: the manufacturer of the Rollershield Drainage System.
- E. Expansion Joint: A structural discontinuity in the Rollershield Drainage System.
- F. Finish: An acrylic-based coating, available in a variety of textures and colors that is applied over the base coat.
- G. Insulation Board: Expanded polystyrene (EPS) insulation board, which is affixed to the substrate.
- H. Panel Erector: The contractor who installs the panelized Rollershield Drainage System.
- I. Panel Fabricator: The contractor who fabricates the panelized Rollershield Drainage System.
- J. Reinforcing Mesh: Glass fiber mesh(es) used to reinforce the base coat and to provide impact resistance.
- K. Sheathing: A substrate in sheet form.
- L. Substrate: The material to which the Rollershield Drainage System is affixed.
- M. Substrate System: The total wall assembly including the attached substrate and water barrier to which the Rollershield Drainage System is affixed.



#### 1.04 SYSTEM DESCRIPTION

- A. General: The Master Wall Inc. Rollershield Drainage System is an Exterior Insulation and Finish System, Class PB, consisting of a water barrier, adhesive attachment, expanded polystyrene insulation board, base coat, reinforcing mesh(es) and finish. The System shall be attached over an approved substrate in accordance with the Rollershield Drainage application Details.
- B. Methods of Installation
  - 1. Field Applied: The Rollershield Drainage System is applied to the substrate system in place.
  - 2. Panelized: The Rollershield Drainage System is shop-applied to the prefabricated wall panels.
- C. Design Requirements
  - 1. Acceptable substrates for the Rollershield Drainage System shall be:
    - a. Exterior sheathing having a water-resistant core with fiberglass mat facers meeting ASTM C 1177.
    - b. Exterior fiber reinforced cement or calcium silicate boards.
    - c. APA Exterior or Exposure 1 Rated Plywood, Grade C-D or better, nominal 12.7 mm (1/2 in), minimum 4-ply.
    - d. Unglazed, unpainted brick, cement plaster, concrete, or masonry.
    - e. APA Exposure 1 rated Oriented Strand Board (OSB) or plywood, nominal 12.7 mm (1/2 in).
  - 3. Deflection of substrate systems shall not exceed 1/240 times the span.
  - 4. The substrate shall be flat within 6.4 mm (1/4 in) in a 3.05 m (10 ft) radius.
  - 5. The slope of inclined surfaces shall not be less than 6:12, and the length shall not exceed 305 mm (12 in).
  - 6. All areas requiring an impact resistance classification higher than "standard", as defined by ASTM E 2486 (formerly EIMA Std. 101.86), shall be as detailed in the drawings and described in the contract documents.
  - 7. Expansion Joints
    - a. Design and location of expansion joints in the Rollershield Drainage System is the responsibility of the project designer and shall be noted on the project drawings. As a minimum, expansion joints shall be placed at the following locations:
      - 1) Where expansion joints occur in the substrate system.
      - 2) Where building expansion joints occur.
      - 3) At floor lines in wood frame construction (Reference Technical Bulletin #140).
      - 4) At floor lines of non-wood framed buildings where significant movement is expected.
      - 5) Where the Rollershield Drainage System abuts dissimilar materials.
      - 6) Where the substrate type changes
      - 7) Where prefabricated panels abut one another
      - 8) In continuous elevations at intervals not exceeding 23 m (75 ft).
      - 9) Where significant structural movement occurs such as changes in roofline, building shape or structural system.



Section 07 24 19

Corporate • P.O. Box 397 • Fortson • Georgia • 31808 • 800-755-0825 • FAX 706-569-6704  
Technical • 800-760-2861 • FAX 734-433-0930

8. Terminations

- a. Interior foam expanding foam sealant may be required behind penetration openings.
- b. The Rollershield Drainage System shall be held back from adjoining materials around openings and penetrations such as windows, doors and mechanical equipment a minimum of 12.7 mm (1/2 in) for sealant application. Sealant joints shall be properly sized and designed for their anticipated movement (Reference Master Wall Inc. Technical Bulletins #148 & 149).
- c. The system shall be terminated a minimum of 152 mm (6 in) above finished grade.
- d. Sealants
  - 1) Shall be manufactured and supplied by others.
  - 2) Shall be compatible with Rollershield Drainage System materials. Refer to current Master Wall Inc. Technical Bulletin #131 for listing of sealants approved by sealant manufacturer for use with EIFS.
  - 3) The sealant backer rod shall be of closed cell.

9. Vapor Retarders and barriers – The use and location of vapor retarders and/or barriers within a wall assembly is the responsibility of the project designer and shall comply with local building code requirements.

10. Dark Colors - The use of dark colors must be considered in relation to wall surface temperature as a function of local climatic conditions. Use of dark colors in high temperature climates can affect the performance of the system.

11. Flashing: Shall be provided at all roof-wall intersections, windows, doors, chimneys, decks, balconies and other areas as necessary to prevent water from entering behind the Rollershield Drainage System and wall system.

D. Performance Requirements

- 1. The Rollershield Drainage System shall have been tested as follows:
  - a. Durability

TEST	TEST METHOD	CRITERIA
Abrasion Resistance	ASTM D968	No deleterious effects after 500 liters (528 quarts)
Accelerated Weathering	ASTM G53	No deleterious effects after 2000 hours
	ASTM G23	
Freeze-Thaw	ICBO/ICC AC 24	No deleterious effects after 60 cycles
	ASTM C67 mod.	No deleterious effects after 60 cycles
Mildew Resistance	ASTM D 3273	No growth during 28 day exposure period
Water Resistance	ASTM D 2247	No deleterious effects after 14 days exposure
Salt Spray Resistance	ASTM B 117	No deleterious effects after 300 hours exposure
Water Penetration	ASTM E 331 ICC ES (AC 219)	No water penetration beyond the inner-most plane of the wall after 2 hours at 299 Pa (6.24 psf)
Drainage Efficiency	ICC-ES Acceptance Criteria	99%



Section 07 24 19

Corporate • P.O. Box 397 • Fortson • Georgia • 31808 • 800-755-0825 • FAX 706-569-6704  
Technical • 800-760-2861 • FAX 734-433-0930

b. Structural

TEST	TEST METHOD	CRITERIA
<b>Tensile Bond</b>	ASTM C 297/E 2134	Minimum 104 kPa (15 psi) – substrate or insulation failure
<b>Transverse Wind Load</b>	ASTM E 330	Withstand positive and negative wind loads as specified by the building code

c. Impact Resistance: In accordance with ASTM E 2486 (formerly EIMA Standard 101.86).

Reinforcing g/m <sup>2</sup> (oz/yd <sup>2</sup> )	Mesh Weight	Minimum Tensile Strengths	EIMA Impact Classification	EIMA Impact Range Joules (in-lbs)
Standard - 153 (4.5)		27 g/cm (150 lbs/in)	Medium	6-10 (50-89)
Hi-Tech - 203 (6)		36 g/cm (200 lbs/in)	Medium	6-10 (50-89)
Medium - 353 (10.4)		45 g/cm (250 lbs/in)	Medium	6-10 (50-89)
Medium - 353 (10.4), with Standard Mesh		45 g/cm (250 lbs/in)	High	10-17 (90-150)
Strong - 509 (15), with Standard Mesh		71 g/cm (400 lbs/in)	High	10-17 (90-150)
Ultra - 695 (20.5), with Standard Mesh		712 g/cm (550 lbs/in)	Ultra High	>17 (>150)
Detail Mesh - 153 (4.5)		27 g/cm (150 lbs/in)	n/a	n/a n/a

d. Fire performance

TEST	TEST METHOD	CRITERIA
<b>Fire Resistance</b>	ASTM E119	No effect on the fire resistance of a rated wall assembly
<b>Surface Burning Characteristics</b>	ASTM E84	Flamespread – 0, Smoke Developed 0
<b>Radiant Heat Test</b>	BOCA 99, Section 1407.0	Average heat flux values within the 2.5% required to pass test
<b>Intermediate Multi-Story Fire Test</b>	NFPA 285 (UBC 26-9)	<ol style="list-style-type: none"> <li>1. Resist flame propagation over the exterior surface</li> <li>2. Resist vertical spread of flame within combustible core/component of panel from one story to the next</li> <li>3. Resist vertical spread of flame over the interior surface from one story to the next</li> <li>4. Resist lateral spread of flame from the compartment of fire origin to adjacent spaces</li> </ol>



## 1.05 SUBMITTALS

- A. Product Data – The contractor shall submit to the owner/architect the manufacturer’s product data sheets describing products, which will be used on this project.
- B. Shop Drawing for Panelized Construction: The panel fabricator shall prepare and submit to the owner/architect complete drawings, showing: wall layout, connections, details, expansion joints and installation sequence.
- C. Samples: The contractor shall submit to the owner/architect two (2) samples of the Rollershield Drainage System for each finish, texture and color to be used on the project. The same tools and techniques proposed for the actual installation shall be used. Samples shall be of sufficient size to accurately represent each color and texture being utilized on the project.
- D. Test Reports – When requested, the contractor shall submit to the owner/architect copies of selected test reports verifying the performance of the Rollershield Drainage System.

## 1.06 QUALITY ASSURANCE

### A. Qualifications

- 1. System Manufacturer: Shall be Master Wall Inc. All materials shall be manufactured or sold by Master Wall Inc. and shall be purchased from Master Wall Inc. or its authorized distributors.
- 2. Contractor: Shall be knowledgeable in the proper installation of the Master Wall Inc. Rollershield Drainage System and shall be experienced and competent in the installation of Exterior Insulation and Finish Systems. Additionally, the contractor shall possess a current Master Wall Inc. applicator certificate issued by Master Wall Inc.
- 3. Insulation Board Manufacturer: Shall be approved by Master Wall Inc., shall be capable of producing the Expanded Polystyrene (EPS) in accordance with current Master Wall Inc. specification and code requirements and have a third party quality assurance program in place.

### B. Regulatory Requirements

- 1. The EPS shall be separated from the interior of the building by a minimum 15-minute thermal barrier.
- 2. The use and maximum thickness of EPS shall be in accordance with the applicable building codes.

### C. Certification

- 1. The Rollershield Drainage System shall be recognized for the intended use by the applicable building code(s).

### D. Mock-Up

- 1. The contractor shall, before the project commences, provide the owner/architect with a mock-up for approval.
- 2. The mock-up shall be of suitable size as required to accurately represent the products being installed, as well as each color and texture to be utilized on the project.
- 3. The mock-up shall be prepared with the same products, tools, equipment and techniques required for the actual application. The finish used shall be from the same batch that is being used on the project.
- 4. The approved mock-up shall be available and maintained at the job site.
- 5. For panelized construction, the mock-up shall be available and maintained at the panel fabrication location.



#### 1.07 DELIVERY, STORAGE AND HANDLING

- A. All Master Wall Inc. materials shall be delivered to the job site in the original, unopened packages with labels intact.
- B. Upon arrival, materials shall be inspected for physical damage, freezing, or overheating. Questionable materials shall not be used.
- C. Deliver all materials in original unopened packages with labels intact. Verify all quantities, colors, and textures against bill of lading.
- D. Store all materials protected from direct exposure to weather conditions and at temperatures not less than 40° F (4° C) or greater than 110° F (43° C).
- E. Stack insulation board flat, fully supported off the ground and protected from direct exposure to the sun.
- F. Material safety data sheets (MSDS) shall be supplied for the components of the EIFS and be available at the job site.

#### 1.08 PROJECT CONDITIONS

- A. Ambient air temperatures shall be 40° F (4° C) or greater and rising at the time of installation of the Master Wall Inc. products and shall remain at 40° F (4° C) or greater for at least 24 hours after application.
- B. Provide supplemental heat and protection as required when the temperature and conditions are not in accordance with installation requirements. Sufficient ventilation and time shall be provided to ensure that materials have sufficiently dried prior to removing supplemental heat.
- C. Adequate protection shall be provided to prevent weather conditions (humidity, temperature, and precipitation) from having an affect on the curing or drying time of Master Wall Inc. materials.
- D. Adjacent materials and the Rollershield Drainage System shall be protected during installation and while curing from weather and shall be protected from site damage.
- E. Coordinate installation of the Rollershield Drainage System with related work specified in other sections to ensure that the wall assembly is protected to prevent water from getting behind the system. The cap flashing shall be installed as soon as possible after the finish coat has been applied. When this is not possible, temporary protection shall be provided immediately in this area.
- F. All sealant work shall be installed in a timely manner. Protect open joints from water intrusion during construction with backer rod, or temporary covering, until permanently sealed.
- G. Sufficient manpower and equipment shall be employed to ensure a continuous operation, free of cold joints, scaffolding lines, and texture variations, etc.
- H. Existing Conditions - The contractor shall have access to electric power, clean water, and a clean work area at the location where the Master Wall Inc. materials are to be applied.

#### 1.09 SEQUENCING AND SCHEDULING

- A. Installation of the Rollershield Drainage System shall be coordinated with other construction trades.
- B. Sufficient manpower and equipment shall be employed to ensure a continuous operation, free of cold joints, scaffold lines, texture variations, etc.



#### 1.10 LIMITED MATERIALS WARRANTY

A. Master Wall Inc. shall provide a limited warranty against defective material upon written request. Master Wall Inc. shall make no other warranties, expressed or implied. Master Wall Inc. does not warrant workmanship. Full details are available from Master Wall Inc.

B. The applicator shall warrant workmanship separately if required. Master Wall Inc. shall not be responsible for workmanship associated with installation of the Rollershield Drainage System.

#### 1.11 DESIGN RESPONSIBILITY

A. It is the responsibility of both the specifier and the purchaser to determine if a product is suitable for its intended use. The designer selected by the purchaser shall be responsible for all decisions pertaining to design, detail, structural capability, attachment details, shop drawings and the like. Master Wall Inc. has prepared guidelines in the form of specifications, installation details and product sheets to facilitate the design process only. Master Wall Inc. is not liable for any errors or omissions in design, detail, structural capability, attachment details, shop drawings, or the like, whether based upon the information prepared by Master Wall Inc. or otherwise, or for any changes which purchasers, specifiers, designers, or their appointed representatives may make to Master Wall Inc.'s published comments.

#### 1.12 MAINTENANCE

A. Maintenance and repair shall follow the procedures noted in Master Wall Inc. Technical Bulletins #112 and #129.

### PART II – PRODUCTS

#### 2.01 MANUFACTURER

A. All components of the Rollershield Drainage System shall be supplied or obtained from Master Wall Inc. or its authorized distributors. Substitutions or additions of materials other than specified will void the warranty.

#### 2.02 MATERIALS

A. Portland Cement: Shall be Type I or II, meeting ASTM C 150, white or gray in color, fresh and free of lumps.

B. Water: Shall be potable, clean and free of foreign matter.

C. Metal Flashing Components: Complying with SMACNA Recommendations. Reference Section 07620.

D. Sealant Systems: Reference Sealant Specification, Section 07900.

E. Window & Door Systems: Detailed by the designer and suitable for EIFS. Reference Section 08000.



## 2.03 COMPONENTS

### A. Starter Tracks/Drainage Tracks

1. Vinyl Corp. foundation sill screed product #WS50-250U, Plastic Components Product # 632-50, Amico Foundation Weep Screed AMFWS425-500, Amico Foundation Weep Screed (NO. 7) or approved equal.
2. Vinyl Corp. PB Starter Strip/Casing Bead product # CBS 150-16W or Plastic Components Starter Trac® product # STWP-15 shall be used in accordance with Master Wall Inc. details.
3. Alternate termination methods may be used in accordance with Master Wall Inc. details and recommendations.

### B. Sheathing Joint Treatment/Transition Treatment

1. Rollershield Mesh Tape, 2" (51 mm) width.
2. Rollershield Flashing Tape, 4" (104 mm) width.

### C. Weather Resistive Barrier

1. Rollershield: A flexible polymer-based roll applied air barrier and waterproof membrane.
2. Trowelshield: A trowel grade air barrier and waterproof membrane.

### D. Adhesive

1. Master Wall Inc. Foam & Mesh (F&M) Adhesive: An acrylic-based product mixed one-to-one by weight with Portland cement designed for use with reinforcing mesh as the base coating over the insulation board.
2. Master Wall Bagged Base Coat (MBB): A polymer based cementitious product mixed with 5 to 6 quarts of water for use as an adhesive and base coating over the insulation board.
3. F&M Plus: An acrylic-based high build product mixed one-to-one by weight with Portland cement designed for use with reinforcing mesh as the base coating over the insulation board.

### E. Insulation Board

1. Insulation Board shall meet or exceed ASTM C-578 and Master Wall Inc.'s requirements for MEPS.
2. Nominal 1.0 pcf, aged expanded polystyrene.
3. Flamespread and smoke development shall be 25 and 450 or less respectively per ASTM E-84.
4. Maximum size 2'x4'x4" (.61 m x 1.22 m x 102 mm). Refer to actual contract documents to determine actual insulation board thickness.



#### F. Reinforcing Mesh

Open weave glass fiber fabric, treated for alkaline resistance and compatibility with Master Wall Base Coats, and conforming ASTM D-76, D-579, D-5035, MIL-Y-1140 and meeting a minimum Medium Impact Resistance (50-89 in-lbs) when tested to EIMA 101.86 Impact Resistance Standards.

1. Detail Mesh
2. Standard Mesh
3. Hi-Tech Mesh
4. Medium Mesh
5. Strong Mesh
6. Ultra Mesh

#### G. Base Coats

1. Master Wall Inc. Foam & Mesh (F&M) Adhesive: An acrylic-based product mixed one-to-one by weight with Portland cement designed for use with reinforcing mesh as the base coating over the insulation board.
2. Master Wall Bagged Base Coat (MBB): A polymer based cementitious product mixed with 5 to 6 quarts of water for use as an adhesive and base coating over the insulation board.
3. F&M Plus: An acrylic-based high build product mixed one-to-one by weight with Portland cement designed for use with reinforcing mesh as the base coating over the insulation board. (This product shall be used where indicated on the construction drawings when a leveling base coat is required.)

#### H. Water Resistant Adhesive & Base Coat

1. Guardian – An acrylic-based product mixed one-to-one by weight with Portland cement for use as the adhesive to bond insulation board to an approved substrate and/or as a base coat with reinforcing mesh over insulation board. (This product should be used as designated on the construction drawings where additional resistance to moisture is needed.)

I. Superior Finish: Master Wall Inc.'s Superior Finishes are acrylic-based wall coatings available in a variety of colors and textures. The following textures are available:

1. Perfect - riled texture
2. Spray – sand type texture
3. R-Coarse – coarse riled texture
4. Desert Sand – coarse sand texture
5. Refinish – Fine texture used to create numerous finishes
6. Superior Stone/Aggrestone Specialty Finishes

Note: The above textures excluding Superior Stone and Aggrestone Finishes are also available in the Superior Silicone Coat product line and the Superior Elastomeric Coat product line. Superior Silicone Coat combines acrylic and the siloxane polymers to provide the maximum resistance to moisture. Superior Elastomeric Coat utilizes elastomeric polymers to enable the finishes to bridge minor cracking.



## PART III – EXECUTION

### 3.01 EXAMINATION

- A. Prior to installation of the Rollershield Drainage System, the contractor shall verify that the substrate:
1. Is of a type listed in Section 1.04.C.1.
  2. 3. Is flat within 6.4 mm (1/4 in) in a 1.2 m (4 ft) radius.
  3. Is sound, dry, connections are tight, has no surface voids, projections or other conditions that may interfere with the Rollershield Drainage System installation or performance.
- B. Prior to the installation of the Rollershield Drainage System, the architect or general contractor shall insure that all needed flashings and other waterproofing details have been completed, if such completion is required prior to the Rollershield Drainage application. Additionally, the Contractor shall ensure that:
1. Metal roof flashing has been installed in accordance with Asphalt Roofing Manufacturers Association (ARMA) Standards.
  2. Openings are flashed in accordance with the Rollershield Drainage System Installation Details or as otherwise necessary to prevent water penetration.
  3. Chimneys, Balconies, and Decks have been properly flashed.
  4. Windows, Doors, etc. are installed and flashed per manufacturer's requirements and the Rollershield Drainage System Installation Details.
- C. Prior to the installation of the Rollershield Drainage System, the contractor shall notify the general contractor, and/or architect, and/or owner of all discrepancies.

### 3.02 PREPARATION

- A. The Rollershield Drainage materials shall be protected by permanent or temporary means from inclement weather and other sources of damage prior to, during, and following application until completely dry.
- B. Protect adjoining work and property during Rollershield Drainage installation.
- C. The substrate shall be prepared as to be free of foreign materials, such as, oil, dust, dirt, form release agents, efflorescence, paint, wax, water repellents, moisture, frost and any other condition that inhibit adhesion.

### 3.03 INSTALLATION

- A. The system shall be installed in accordance with the current Master Wall Inc. Rollershield Drainage System Application Instructions.
- B. The overall minimum base coat thickness shall be sufficient to fully embed the mesh.
- C. Sealant shall not be applied directly to textured finishes.
- D. When installing the Rollershield Drainage System, adhere according to Master Wall Inc. and local requirements.
- E. High impact meshes shall be installed as specified at ground level, high traffic areas and other areas exposed to or susceptible to impact damage.



### 3.04 FIELD QUALITY CONTROL

- A. The contractor shall be responsible for the proper application of the Rollershield Drainage materials.
- B. Master Wall Inc. assumes no responsibility for on-site inspections or application of its products.
- C. If required, the contractor shall certify in writing the quality of work performed relative to the substrate system, details, installation procedures, workmanship and as to the specific products used.
- D. If required, the EPS supplier shall certify in writing that the EPS meets Master Wall Inc.'s specifications.
- E. If required, the sealant contractor shall certify in writing that the sealant application is in accordance with the sealant manufacturer's and Master Wall Inc.'s recommendations.

### 3.05 CLEANING

- A. All excess Rollershield Drainage System materials shall be removed from the job site by the contractor in accordance with contract provisions and as required by applicable law.
- B. All surrounding areas, where the Rollershield Drainage System has been installed, shall be left free of debris and foreign substances resulting from the contractor's work.

### 3.06 PROTECTION

- A. The Rollershield Drainage System shall be protected from inclement weather and other sources of damage until dry and permanent protection in the form of flashings, sealants, etc. are installed.

#### **Disclaimer**

This Specification is published for general informational purposes only and is not intended to imply that these are the only materials, procedures, or methods, which are available or suitable. Materials, procedures, or methods may vary according to the particular circumstances, local building code requirements, design conditions, or statutory and regulatory requirements. While the information in this specification is believed to be accurate and reliable, it is presented without guarantee or responsibility on the part of Master Wall Inc.



# Rollershield Drainage™ EIFS

Conceptual Details

Corporate • P.O. Box 397 • Fortson • Georgia • 31808 • 800-755-0825 • FAX 706-569-6704

Technical • 800-760-2861 • FAX 734-433-0930

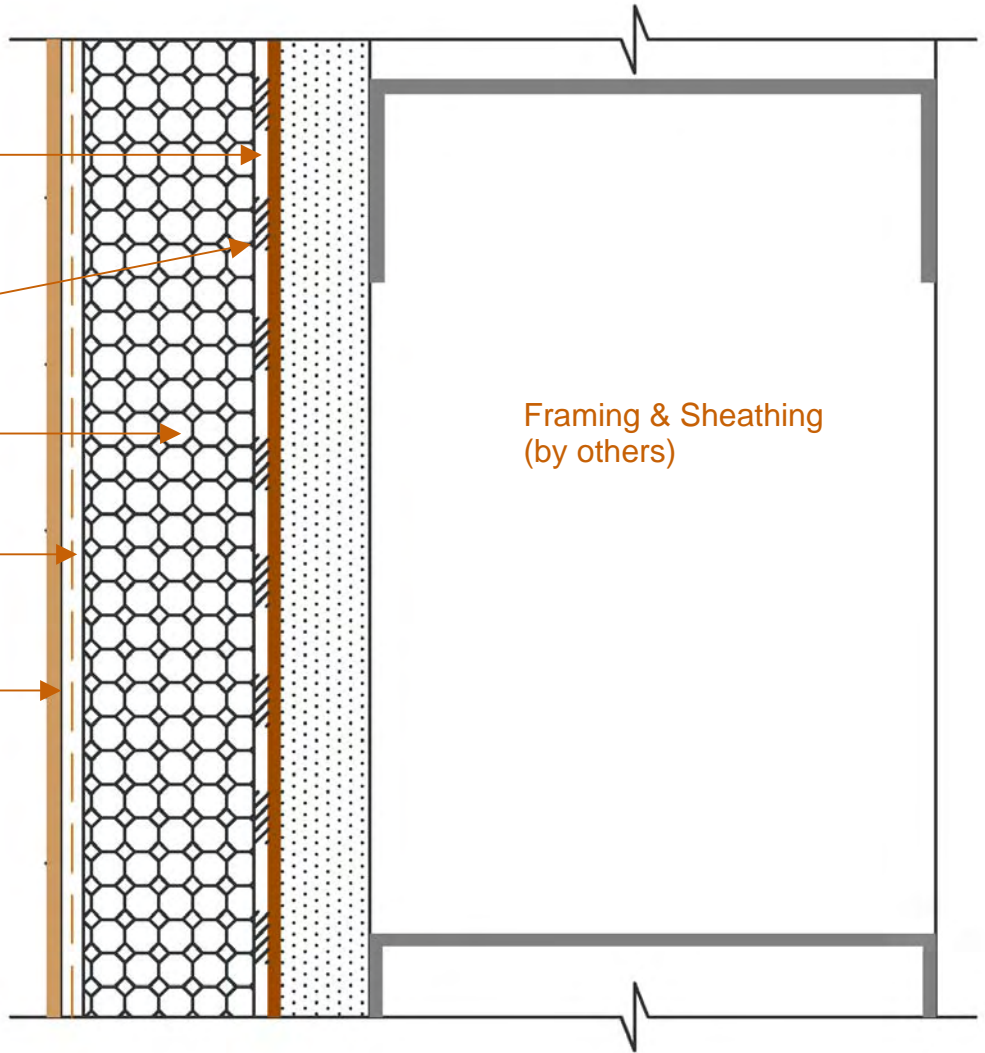
Rollershield with  
Rollershield Mesh or  
Rollershield Flashing  
Tape at sheathing  
joints and transitions

Master Wall Adhesive  
(apply with notches  
vertical)

Master Wall Insulation  
Board

Master Wall Mesh and  
Base Coat

Superior Finish



## AFRS-01 Cross-Section

These drawings relay the conceptual conditions of Master Wall Systems and are not the construction drawings. Ultimately the design and detailing of an entire wall system is the responsibility of a professional. These details will guide the design professional in the use of Master Wall Products. Master Wall disclaims design, warranty or construction intent or responsibility.

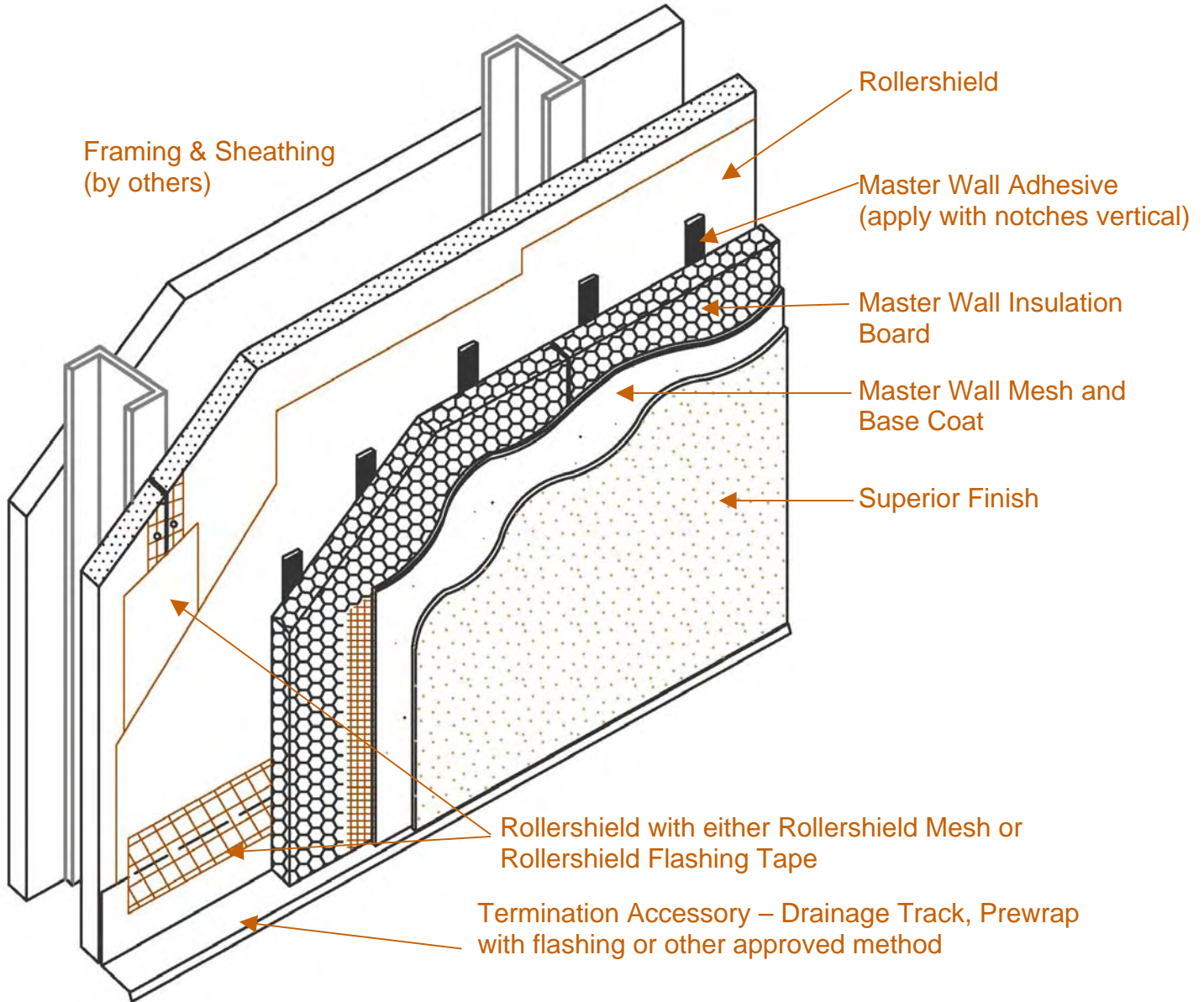


# Rollershield Drainage™ EIFS

Conceptual Details

Corporate • P.O. Box 397 • Fortson • Georgia • 31808 • 800-755-0825 • FAX 706-569-6704

Technical • 800-760-2861 • FAX 734-433-0930



## AFRS-02 Cross-Section Isometric

These drawings relay the conceptual conditions of Master Wall Systems and are not the construction drawings. Ultimately the design and detailing of an entire wall system is the responsibility of a professional. These details will guide the design professional in the use of Master Wall Products. Master Wall disclaims design, warranty or construction intent or responsibility.

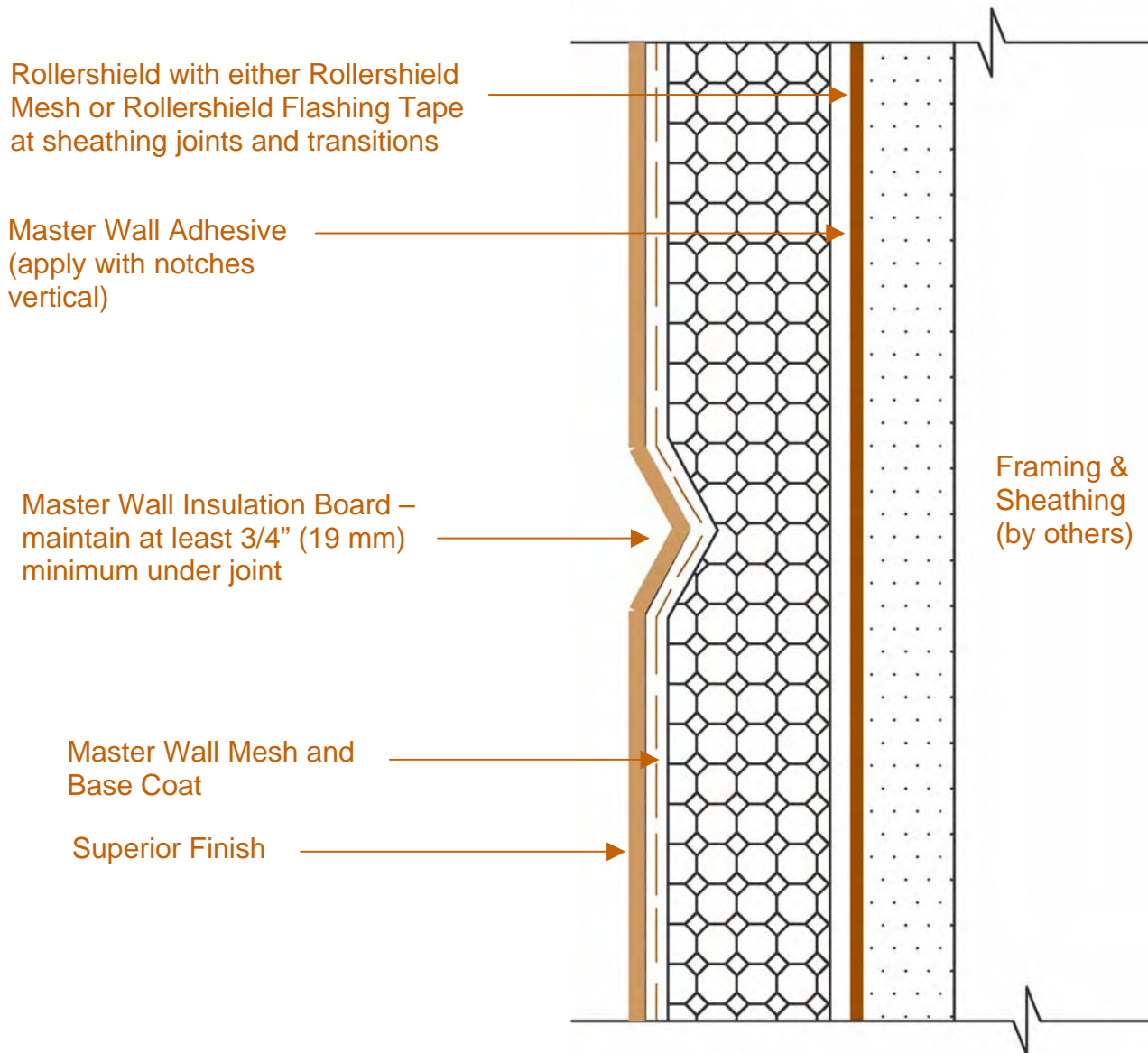


# Rollershield Drainage™ EIFS

Conceptual Details

Corporate • P.O. Box 397 • Fortson • Georgia • 31808 • 800-755-0825 • FAX 706-569-6704

Technical • 800-760-2861 • FAX 734-433-0930



## AFRS-03 Aesthetic Joint

These drawings relay the conceptual conditions of Master Wall Systems and are not the construction drawings. Ultimately the design and detailing of an entire wall system is the responsibility of a professional. These details will guide the design professional in the use of Master Wall Products. Master Wall disclaims design, warranty or construction intent or responsibility.



# Rollershield Drainage™ EIFS

Conceptual Details

Corporate • P.O. Box 397 • Fortson • Georgia • 31808 • 800-755-0825 • FAX 706-569-6704

Technical • 800-760-2861 • FAX 734-433-0930

Rollershield with either  
 Rollershield Mesh or Rollershield  
 Flashing Tape at sheathing joints  
 and transitions

Slope 1:2 minimum

Master Wall Insulation  
 Board – maximum 4"  
 (102 mm) for  
 combustible construction

Master Wall Adhesive  
 (apply with notches  
 vertical)

Master Wall Mesh and  
 Base Coat

Superior Finish

Framing &  
 Sheathing  
 (by others)

## AFRS-04 Aesthetic Projection

These drawings relay the conceptual conditions of Master Wall Systems and are not the construction drawings. Ultimately the design and detailing of an entire wall system is the responsibility of a professional. These details will guide the design professional in the use of Master Wall Products. Master Wall disclaims design, warranty or construction intent or responsibility.

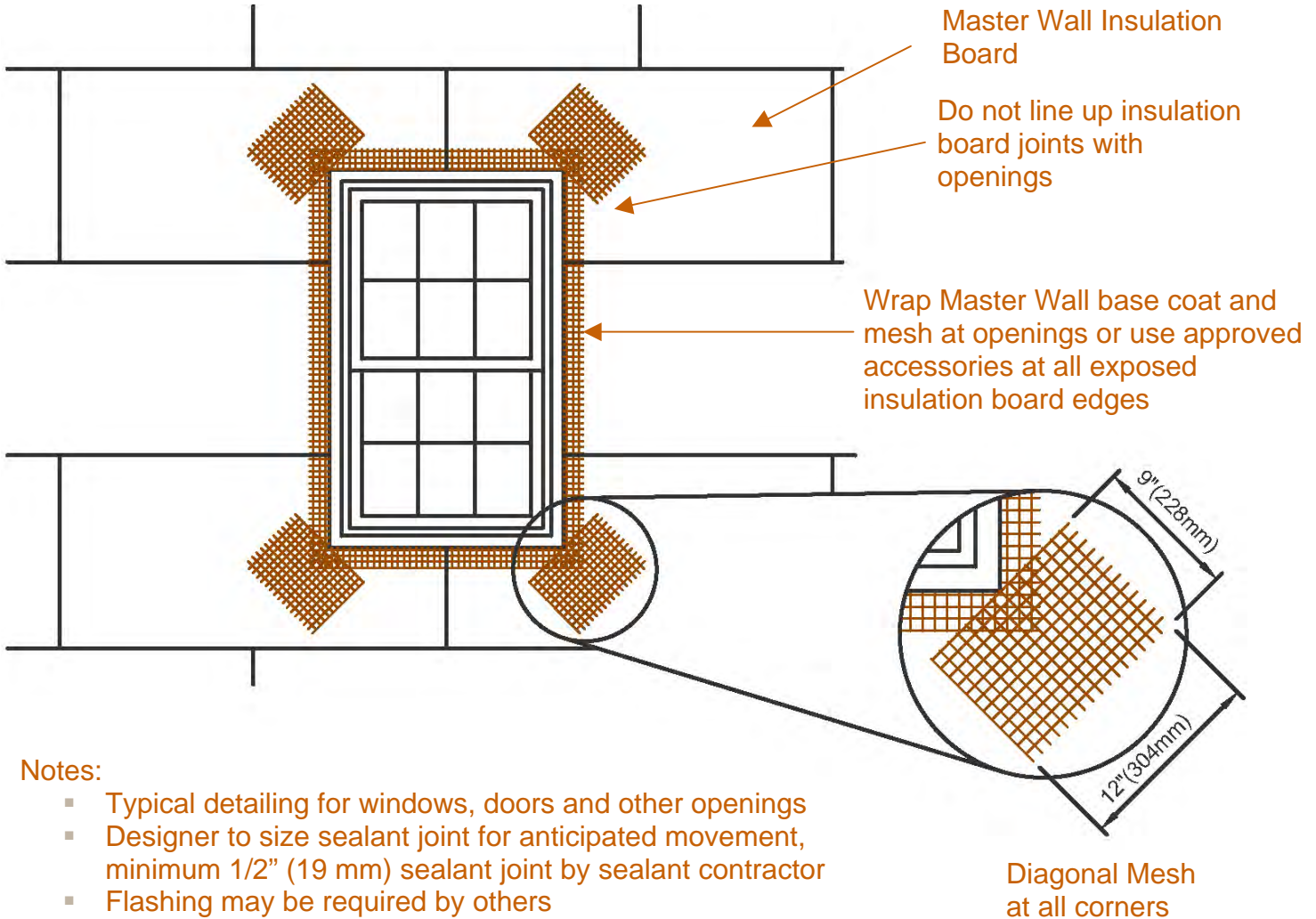


# Rollershield Drainage™ EIFS

Conceptual Details

Corporate • P.O. Box 397 • Fortson • Georgia • 31808 • 800-755-0825 • FAX 706-569-6704

Technical • 800-760-2861 • FAX 734-433-0930



**Notes:**

- Typical detailing for windows, doors and other openings
- Designer to size sealant joint for anticipated movement, minimum 1/2" (19 mm) sealant joint by sealant contractor
- Flashing may be required by others

## AFRS-05 Typical Reinforcing Mesh Application

These drawings relay the conceptual conditions of Master Wall Systems and are not the construction drawings. Ultimately the design and detailing of an entire wall system is the responsibility of a professional. These details will guide the design professional in the use of Master Wall Products. Master Wall disclaims design, warranty or construction intent or responsibility.

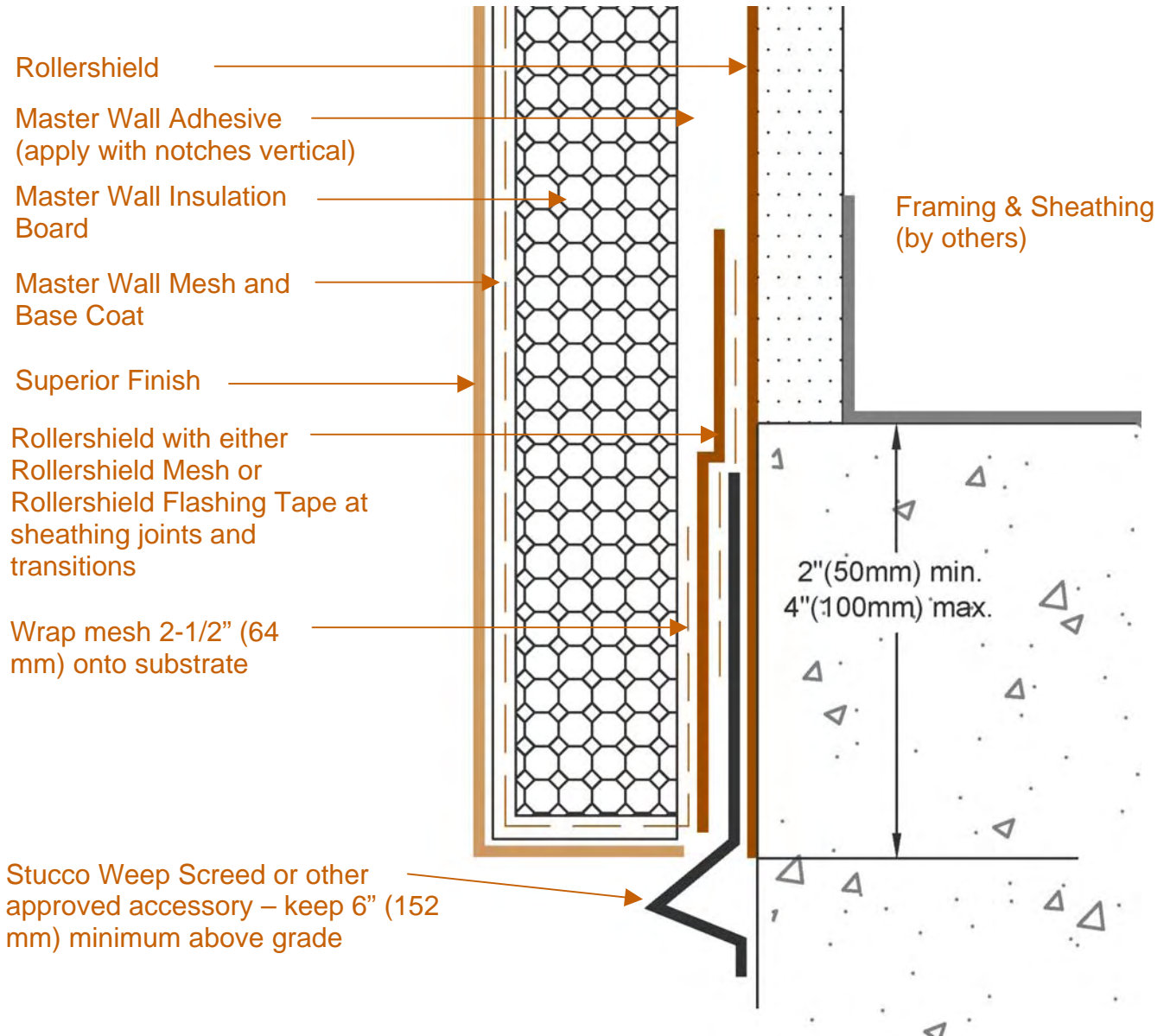


# Rollershield Drainage™ EIFS

Conceptual Details

Corporate • P.O. Box 397 • Fortson • Georgia • 31808 • 800-755-0825 • FAX 706-569-6704

Technical • 800-760-2861 • FAX 734-433-0930



## AFRS-06 Termination at Foundation

These drawings relay the conceptual conditions of Master Wall Systems and are not the construction drawings. Ultimately the design and detailing of an entire wall system is the responsibility of a professional. These details will guide the design professional in the use of Master Wall Products. Master Wall disclaims design, warranty or construction intent or responsibility.

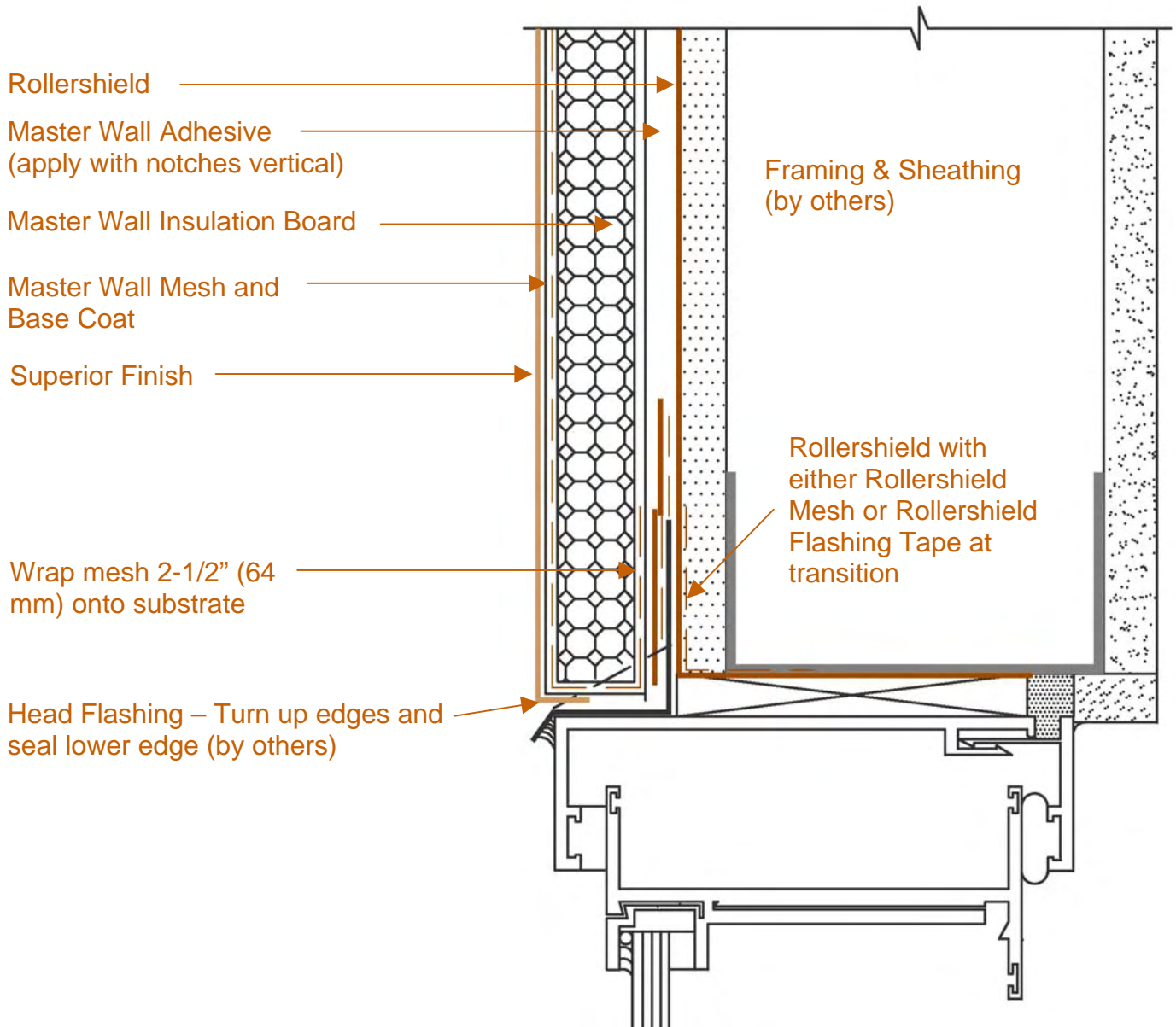


# Rollershield Drainage™ EIFS

Conceptual Details

Corporate • P.O. Box 397 • Fortson • Georgia • 31808 • 800-755-0825 • FAX 706-569-6704

Technical • 800-760-2861 • FAX 734-433-0930



## AFRS-07 Typical Window Head Detail

These drawings relay the conceptual conditions of Master Wall Systems and are not the construction drawings. Ultimately the design and detailing of an entire wall system is the responsibility of a professional. These details will guide the design professional in the use of Master Wall Products. Master Wall disclaims design, warranty or construction intent or responsibility.

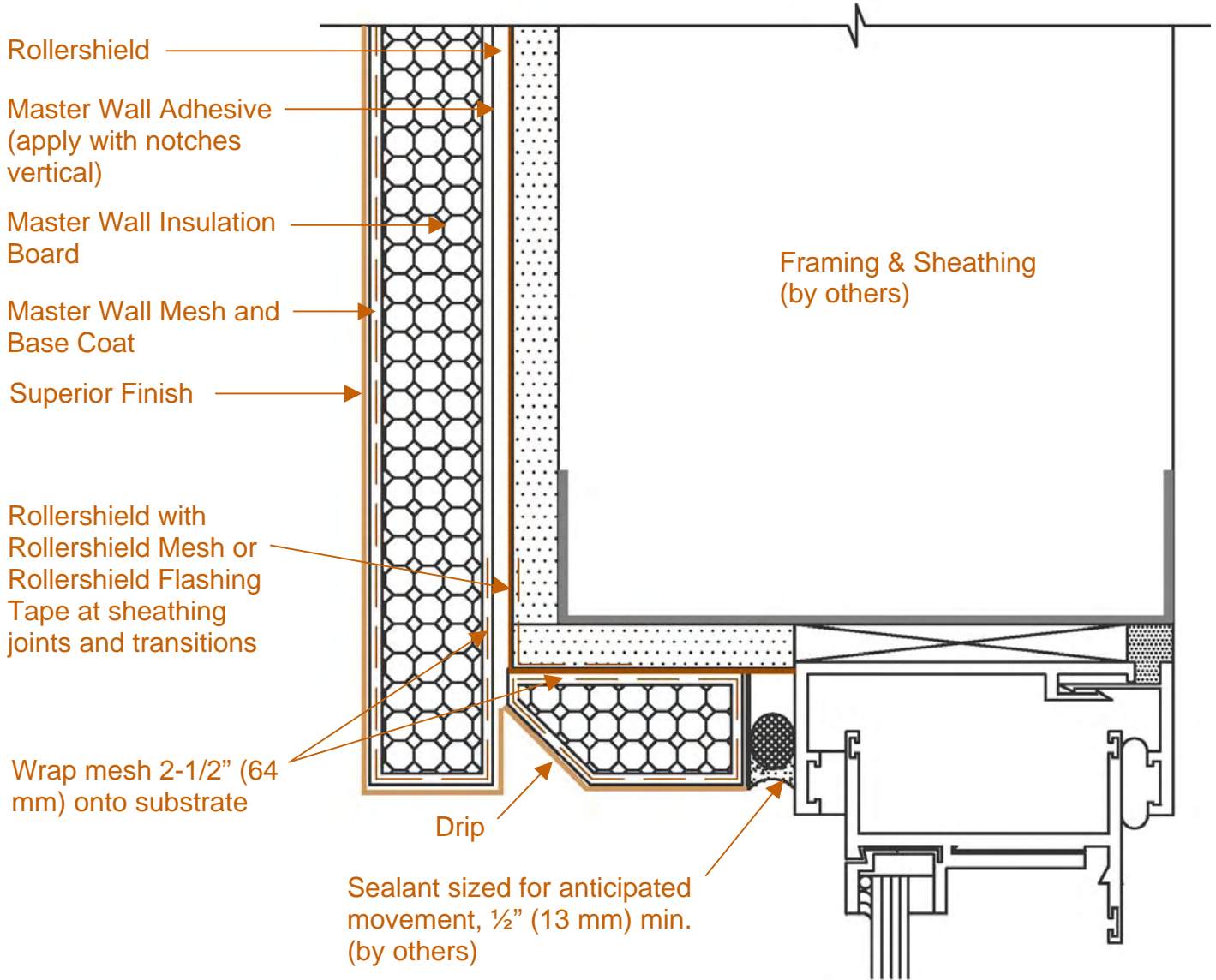


# Rollershield Drainage™ EIFS

Conceptual Details

Corporate • P.O. Box 397 • Fortson • Georgia • 31808 • 800-755-0825 • FAX 706-569-6704

Technical • 800-760-2861 • FAX 734-433-0930



## AFRS-08 Recessed Window Head Detail

These drawings relay the conceptual conditions of Master Wall Systems and are not the construction drawings. Ultimately the design and detailing of an entire wall system is the responsibility of a professional. These details will guide the design professional in the use of Master Wall Products. Master Wall disclaims design, warranty or construction intent or responsibility.

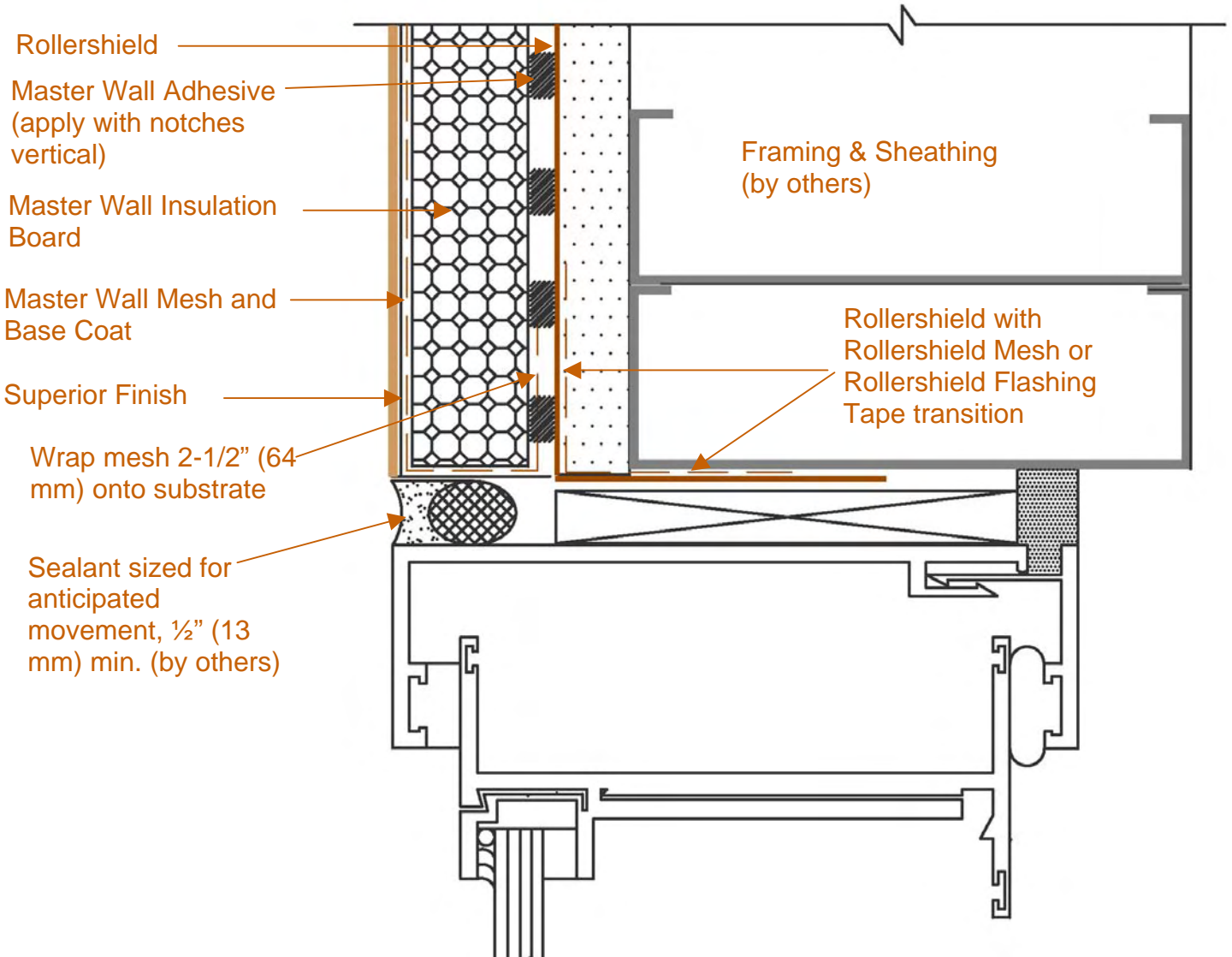


# Rollershield Drainage™ EIFS

Conceptual Details

Corporate • P.O. Box 397 • Fortson • Georgia • 31808 • 800-755-0825 • FAX 706-569-6704

Technical • 800-760-2861 • FAX 734-433-0930



## AFRS-09 Typical Jamb Detail

These drawings relay the conceptual conditions of Master Wall Systems and are not the construction drawings. Ultimately the design and detailing of an entire wall system is the responsibility of a professional. These details will guide the design professional in the use of Master Wall Products. Master Wall disclaims design, warranty or construction intent or responsibility.

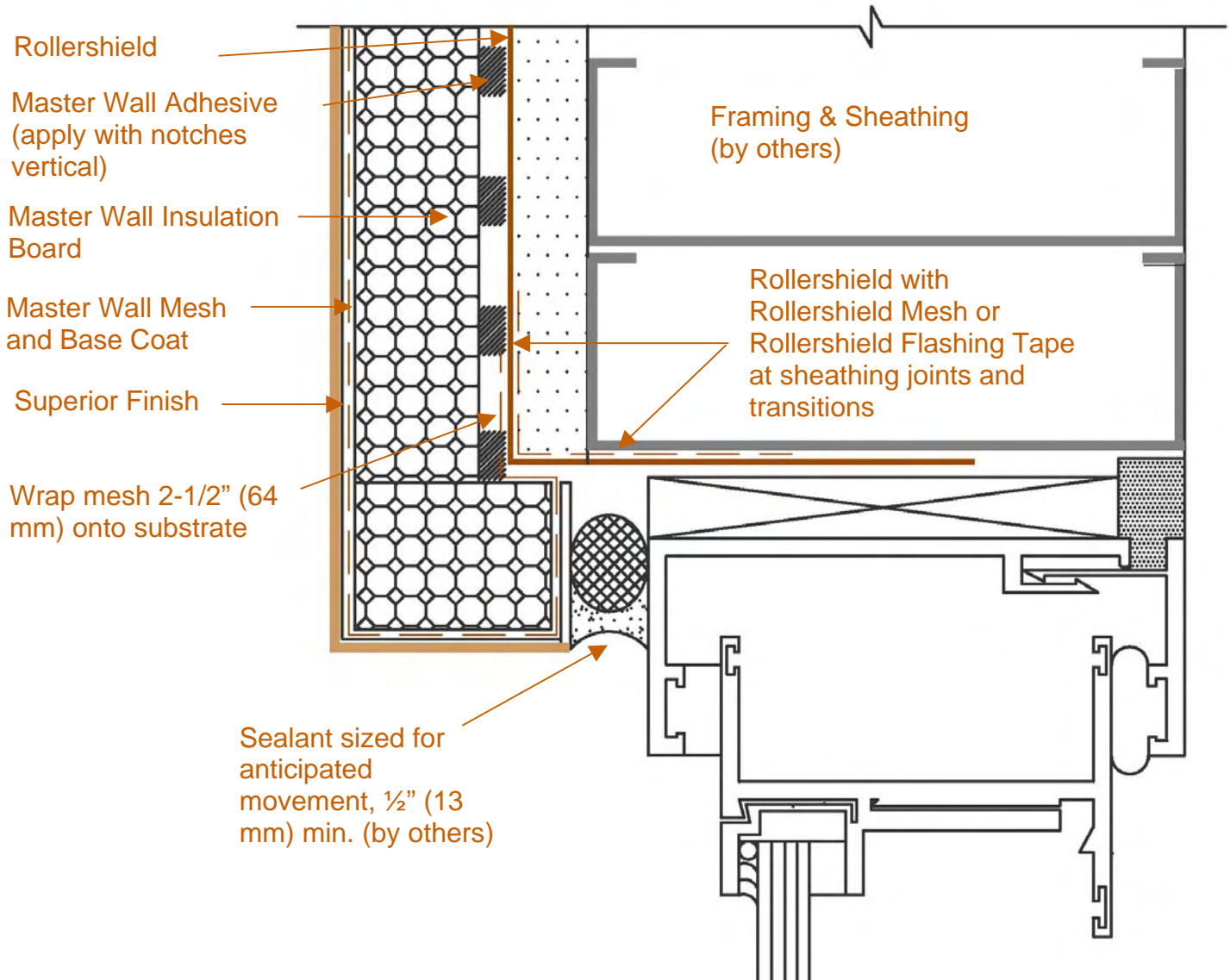


# Rollershield Drainage™ EIFS

Conceptual Details

Corporate • P.O. Box 397 • Fortson • Georgia • 31808 • 800-755-0825 • FAX 706-569-6704

Technical • 800-760-2861 • FAX 734-433-0930



## AFRS-10 Typical Jamb Detail

These drawings relay the conceptual conditions of Master Wall Systems and are not the construction drawings. Ultimately the design and detailing of an entire wall system is the responsibility of a professional. These details will guide the design professional in the use of Master Wall Products. Master Wall disclaims design, warranty or construction intent or responsibility.

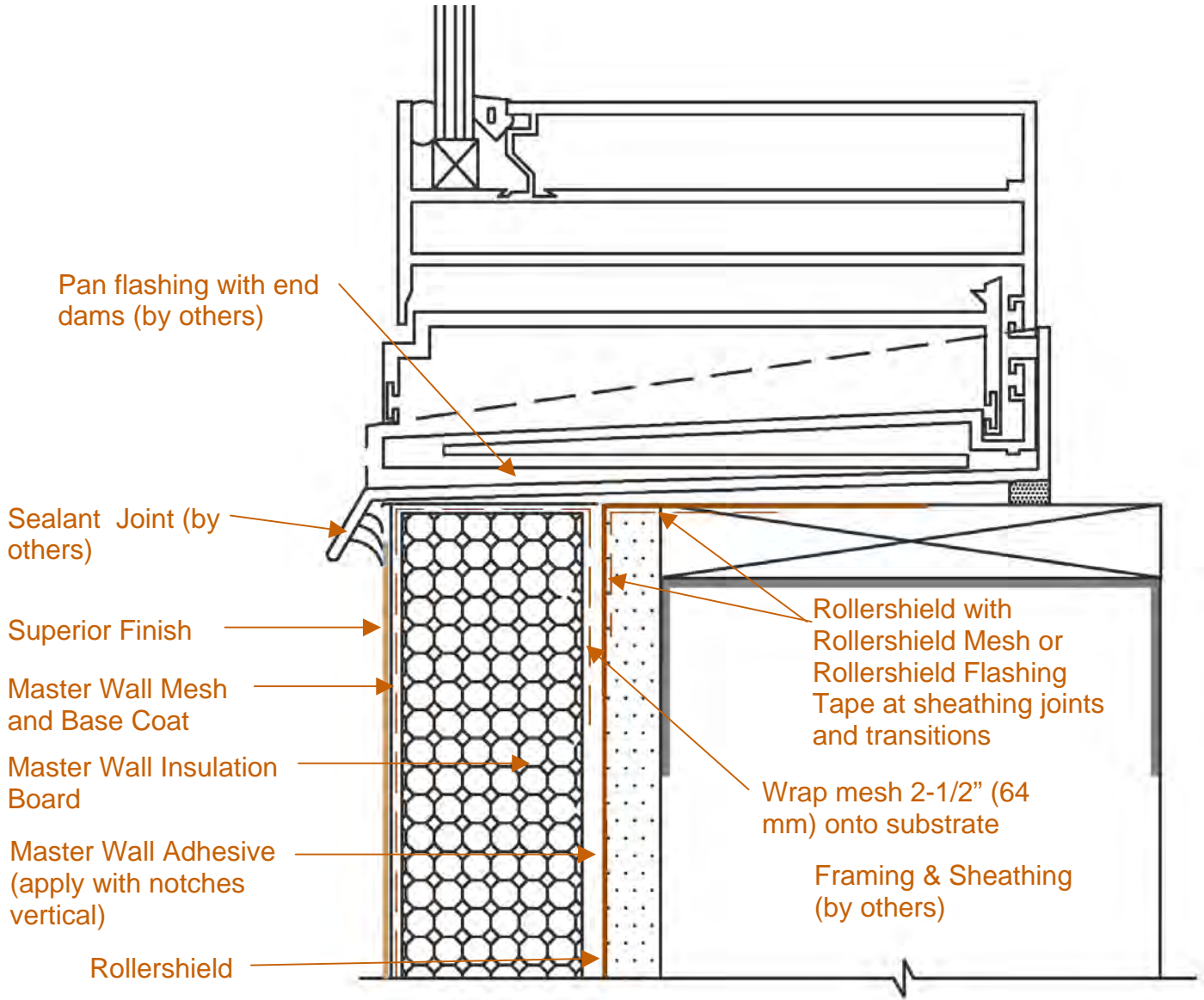


# Rollershield Drainage™ EIFS

Conceptual Details

Corporate • P.O. Box 397 • Fortson • Georgia • 31808 • 800-755-0825 • FAX 706-569-6704

Technical • 800-760-2861 • FAX 734-433-0930



## AFRS-11 Typical Sill Detail

These drawings relay the conceptual conditions of Master Wall Systems and are not the construction drawings. Ultimately the design and detailing of an entire wall system is the responsibility of a professional. These details will guide the design professional in the use of Master Wall Products. Master Wall disclaims design, warranty or construction intent or responsibility.

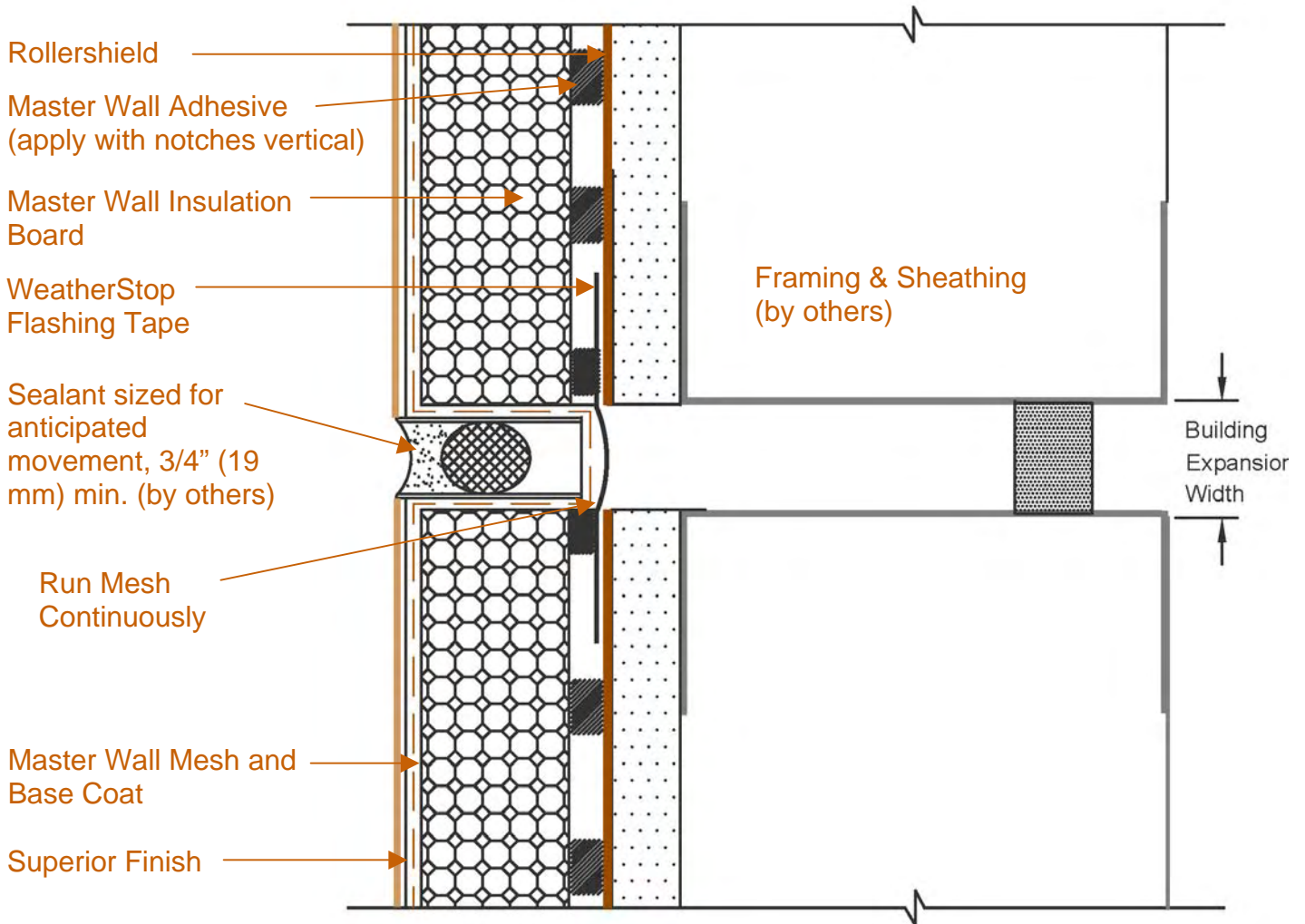


# Rollershield Drainage™ EIFS

Conceptual Details

Corporate • P.O. Box 397 • Fortson • Georgia • 31808 • 800-755-0825 • FAX 706-569-6704

Technical • 800-760-2861 • FAX 734-433-0930



## AFRS-12 Typical Vertical Expansion Joint

These drawings relay the conceptual conditions of Master Wall Systems and are not the construction drawings. Ultimately the design and detailing of an entire wall system is the responsibility of a professional. These details will guide the design professional in the use of Master Wall Products. Master Wall disclaims design, warranty or construction intent or responsibility.

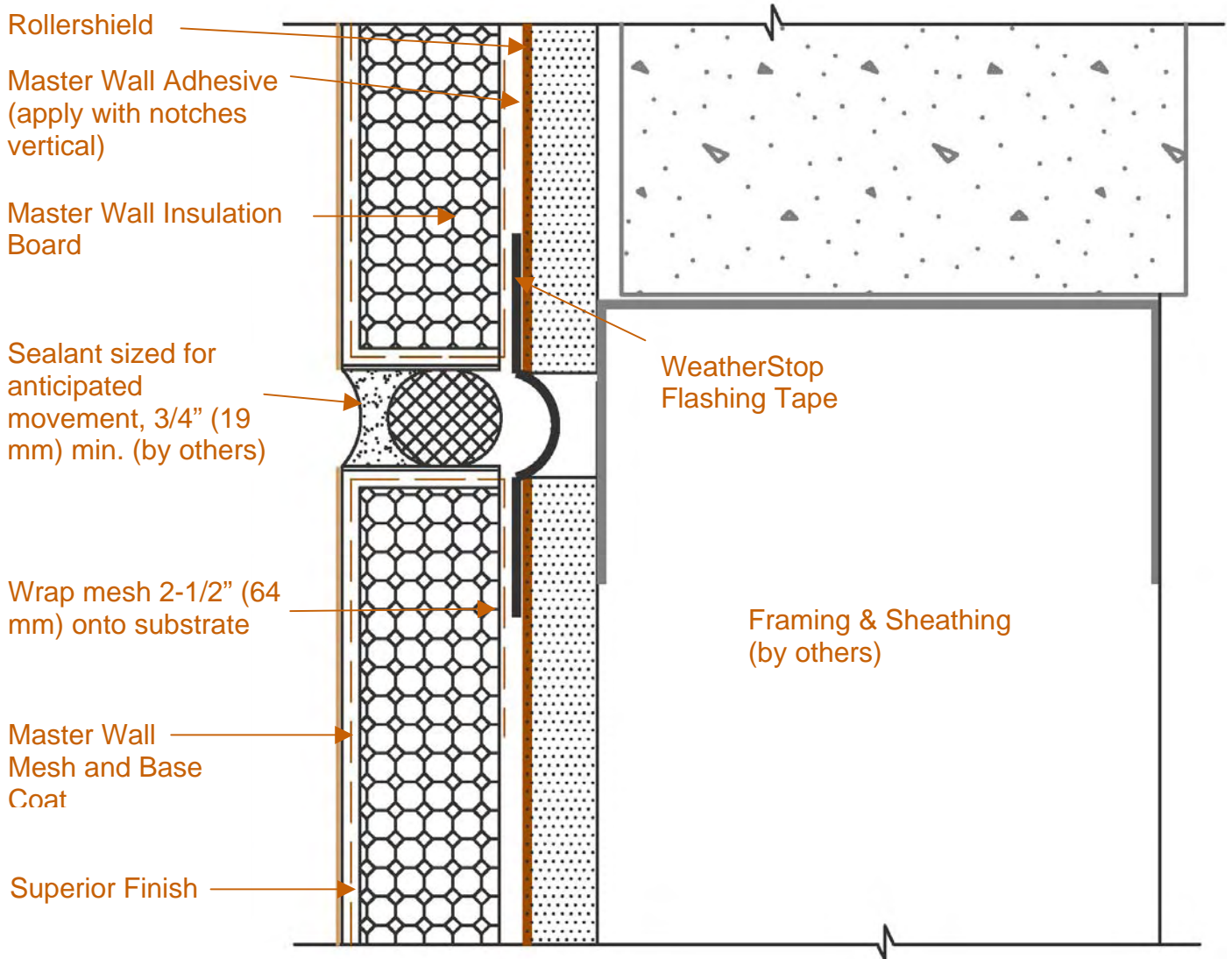


# Rollershield Drainage™ EIFS

Conceptual Details

Corporate • P.O. Box 397 • Fortson • Georgia • 31808 • 800-755-0825 • FAX 706-569-6704

Technical • 800-760-2861 • FAX 734-433-0930



## AFRS-13 Typical Horizontal Expansion Joint

These drawings relay the conceptual conditions of Master Wall Systems and are not the construction drawings. Ultimately the design and detailing of an entire wall system is the responsibility of a professional. These details will guide the design professional in the use of Master Wall Products. Master Wall disclaims design, warranty or construction intent or responsibility.

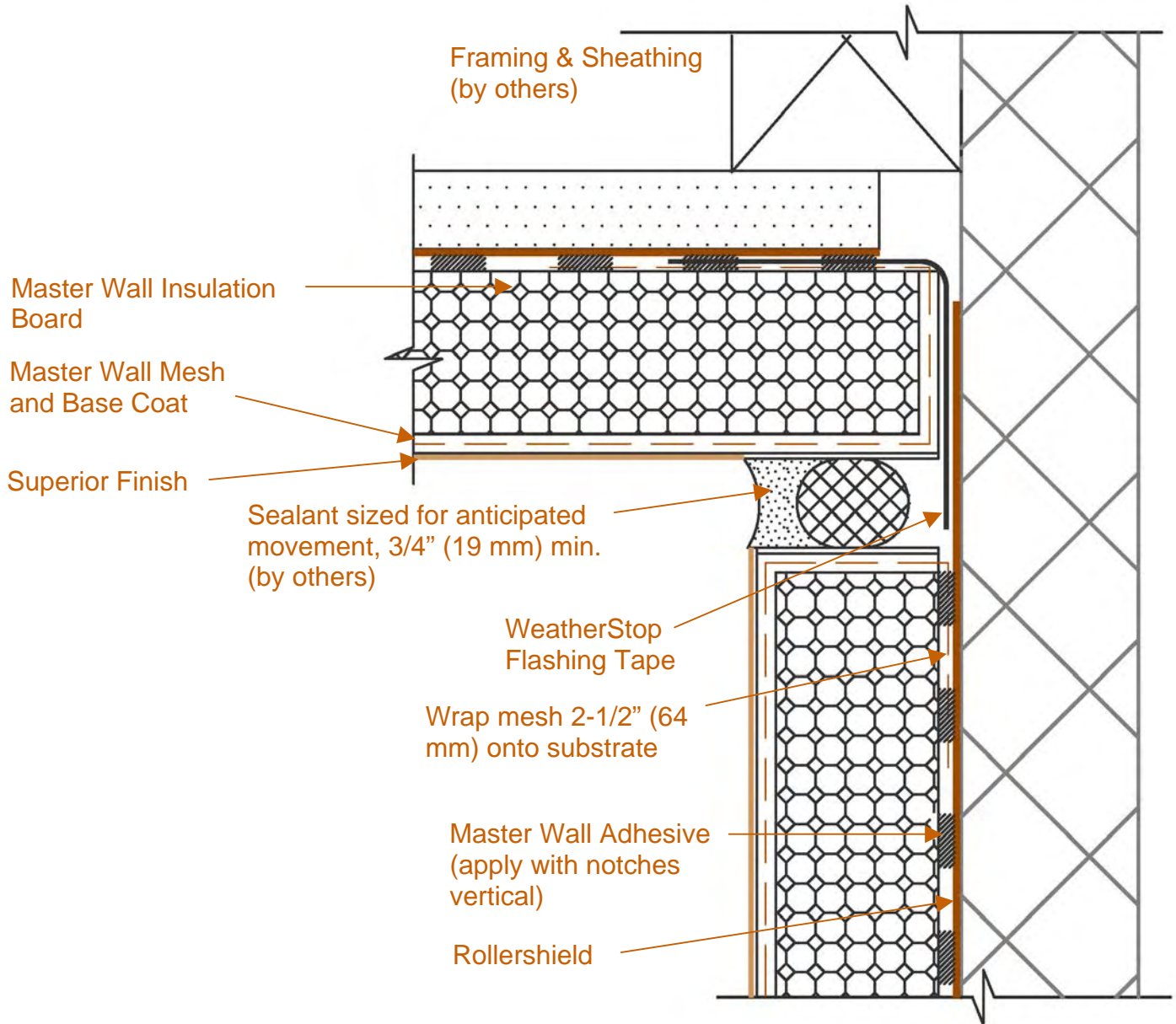


# Rollershield Drainage™ EIFS

Conceptual Details

Corporate • P.O. Box 397 • Fortson • Georgia • 31808 • 800-755-0825 • FAX 706-569-6704

Technical • 800-760-2861 • FAX 734-433-0930



## AFRS-14 Corner Expansion Joint/Substrate Change

These drawings relay the conceptual conditions of Master Wall Systems and are not the construction drawings. Ultimately the design and detailing of an entire wall system is the responsibility of a professional. These details will guide the design professional in the use of Master Wall Products. Master Wall disclaims design, warranty or construction intent or responsibility.

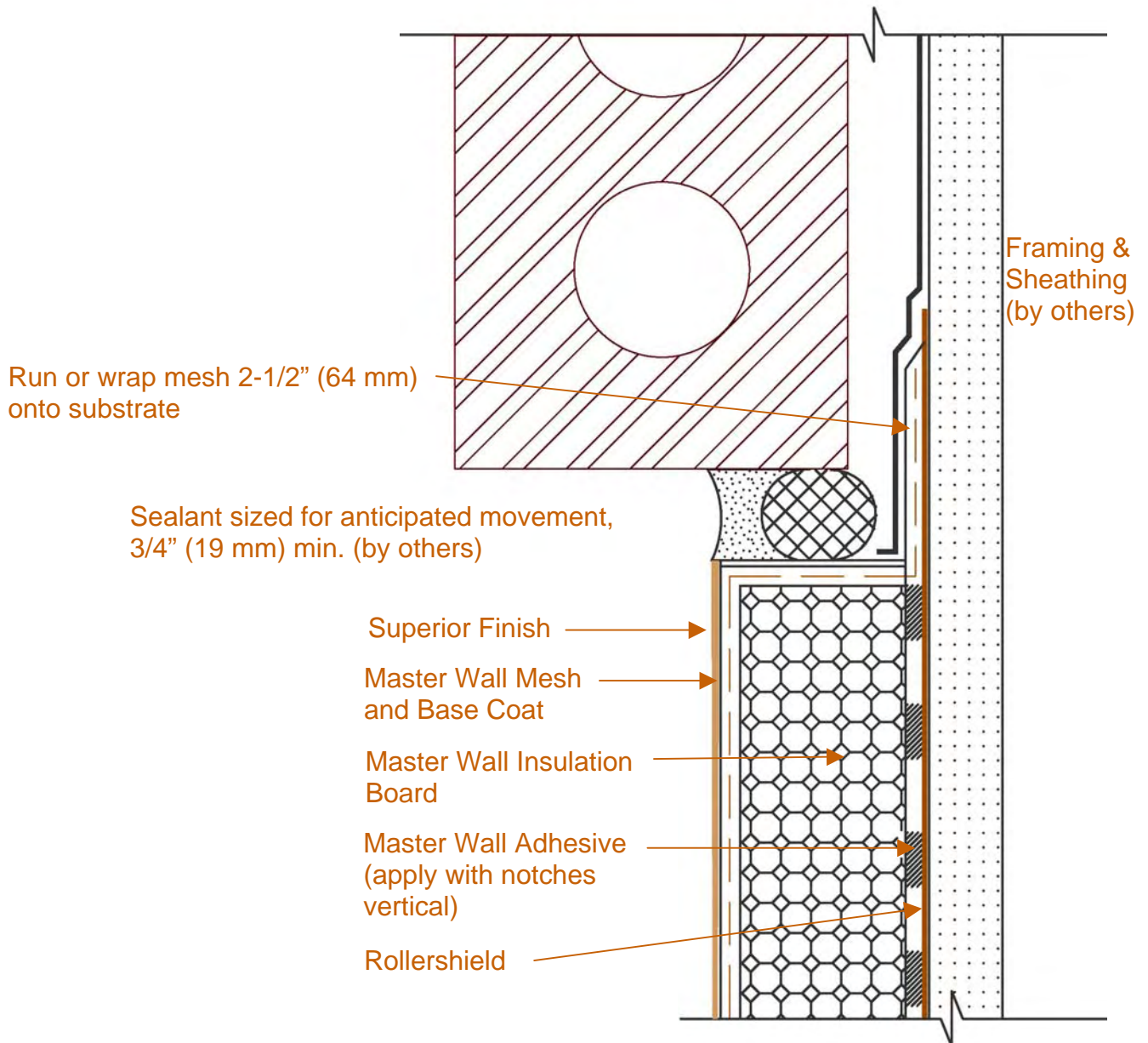


# Rollershield Drainage™ EIFS

Conceptual Details

Corporate • P.O. Box 397 • Fortson • Georgia • 31808 • 800-755-0825 • FAX 706-569-6704

Technical • 800-760-2861 • FAX 734-433-0930



## AFRS-15 Dissimilar Materials

These drawings relay the conceptual conditions of Master Wall Systems and are not the construction drawings. Ultimately the design and detailing of an entire wall system is the responsibility of a professional. These details will guide the design professional in the use of Master Wall Products. Master Wall disclaims design, warranty or construction intent or responsibility.

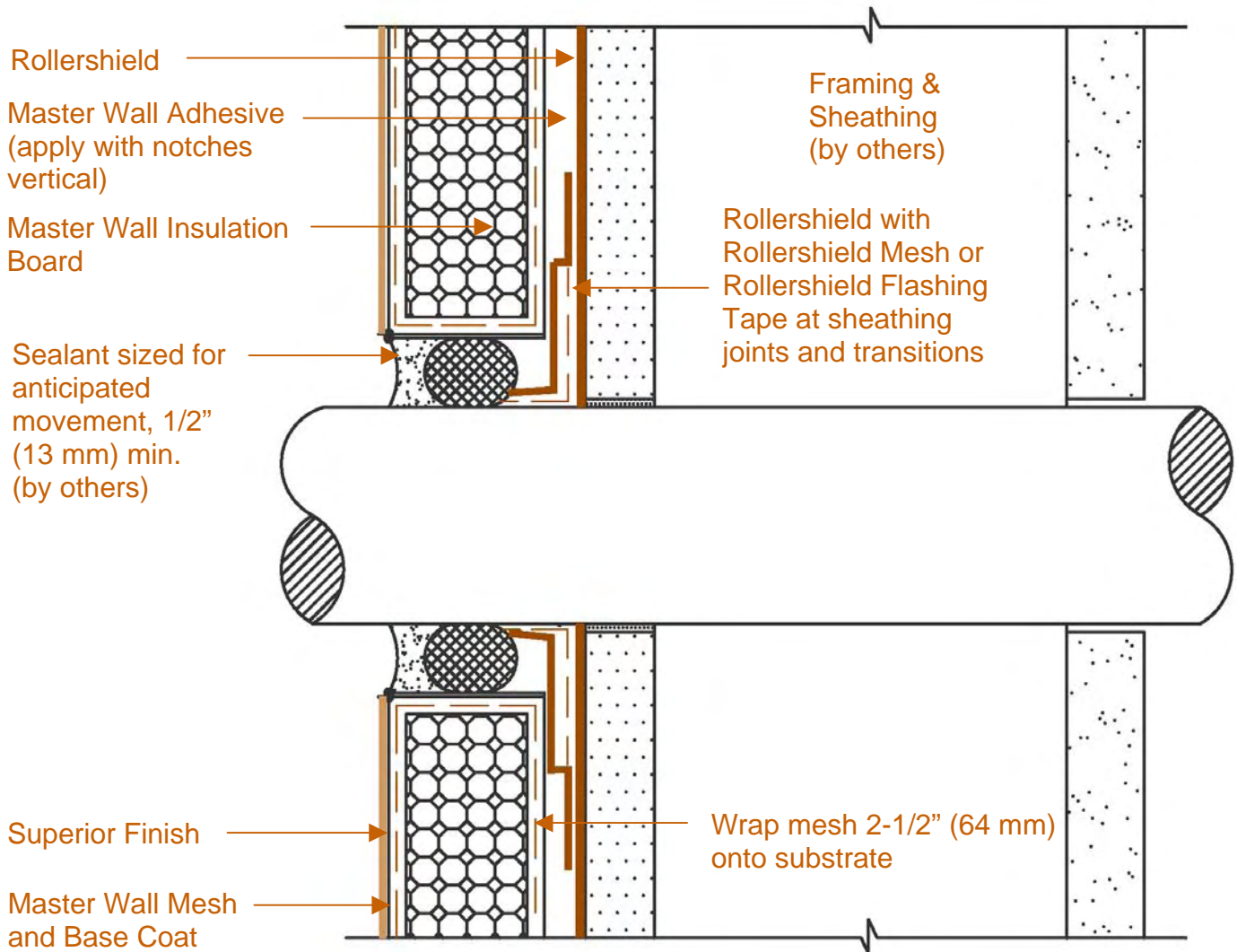


# Rollershield Drainage™ EIFS

Conceptual Details

Corporate • P.O. Box 397 • Fortson • Georgia • 31808 • 800-755-0825 • FAX 706-569-6704

Technical • 800-760-2861 • FAX 734-433-0930



## AFRS-16 Pipe Penetration Detail

These drawings relay the conceptual conditions of Master Wall Systems and are not the construction drawings. Ultimately the design and detailing of an entire wall system is the responsibility of a professional. These details will guide the design professional in the use of Master Wall Products. Master Wall disclaims design, warranty or construction intent or responsibility.

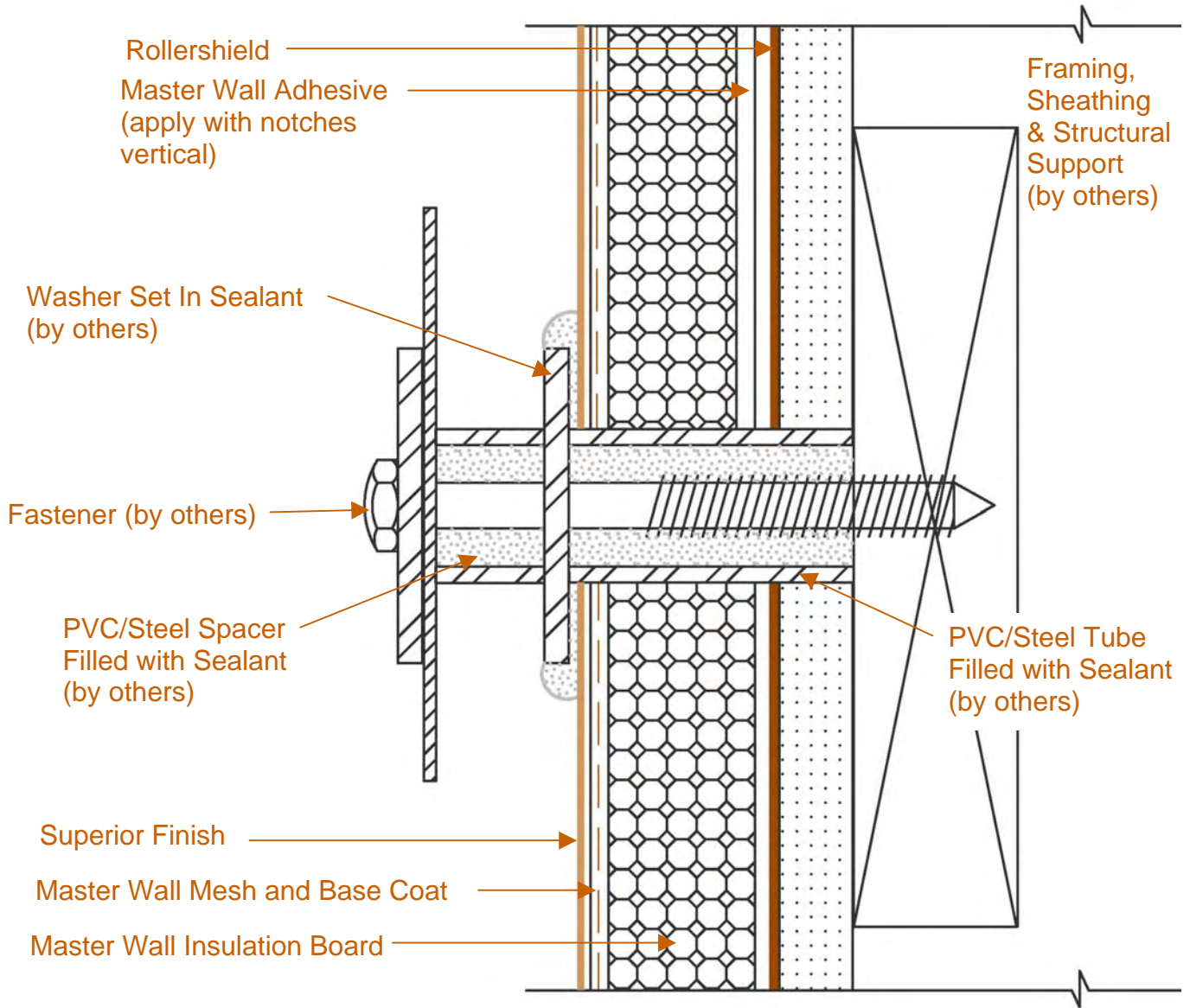


# Rollershield Drainage™ EIFS

Conceptual Details

Corporate • P.O. Box 397 • Fortson • Georgia • 31808 • 800-755-0825 • FAX 706-569-6704

Technical • 800-760-2861 • FAX 734-433-0930



## AFRS-17 Structural Fastener Detail

These drawings relay the conceptual conditions of Master Wall Systems and are not the construction drawings. Ultimately the design and detailing of an entire wall system is the responsibility of a professional. These details will guide the design professional in the use of Master Wall Products. Master Wall disclaims design, warranty or construction intent or responsibility.

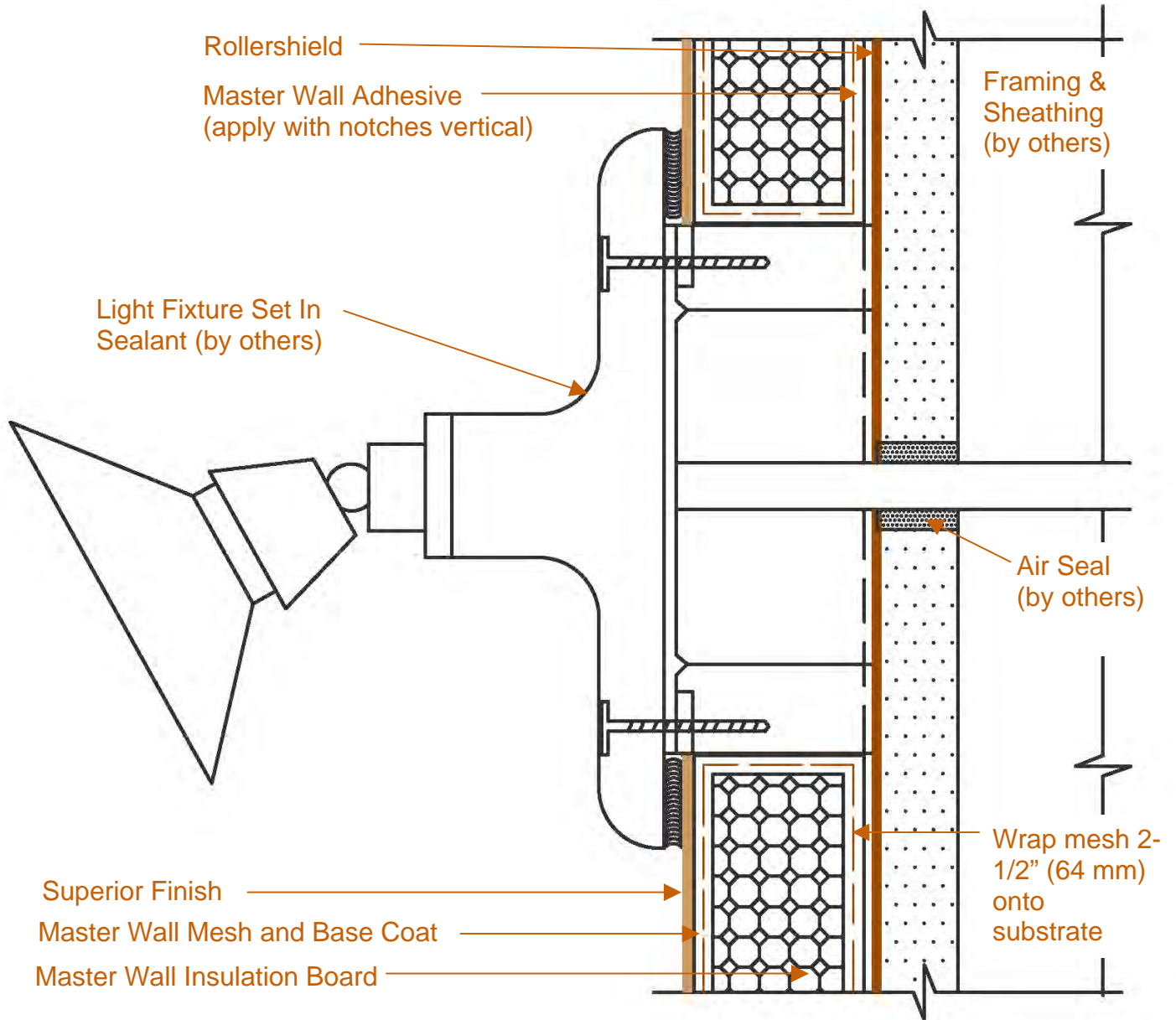


# Rollershield Drainage™ EIFS

Conceptual Details

Corporate • P.O. Box 397 • Fortson • Georgia • 31808 • 800-755-0825 • FAX 706-569-6704

Technical • 800-760-2861 • FAX 734-433-0930



## AFRS-18 Outdoor Light Fixture

These drawings relay the conceptual conditions of Master Wall Systems and are not the construction drawings. Ultimately the design and detailing of an entire wall system is the responsibility of a professional. These details will guide the design professional in the use of Master Wall Products. Master Wall disclaims design, warranty or construction intent or responsibility.

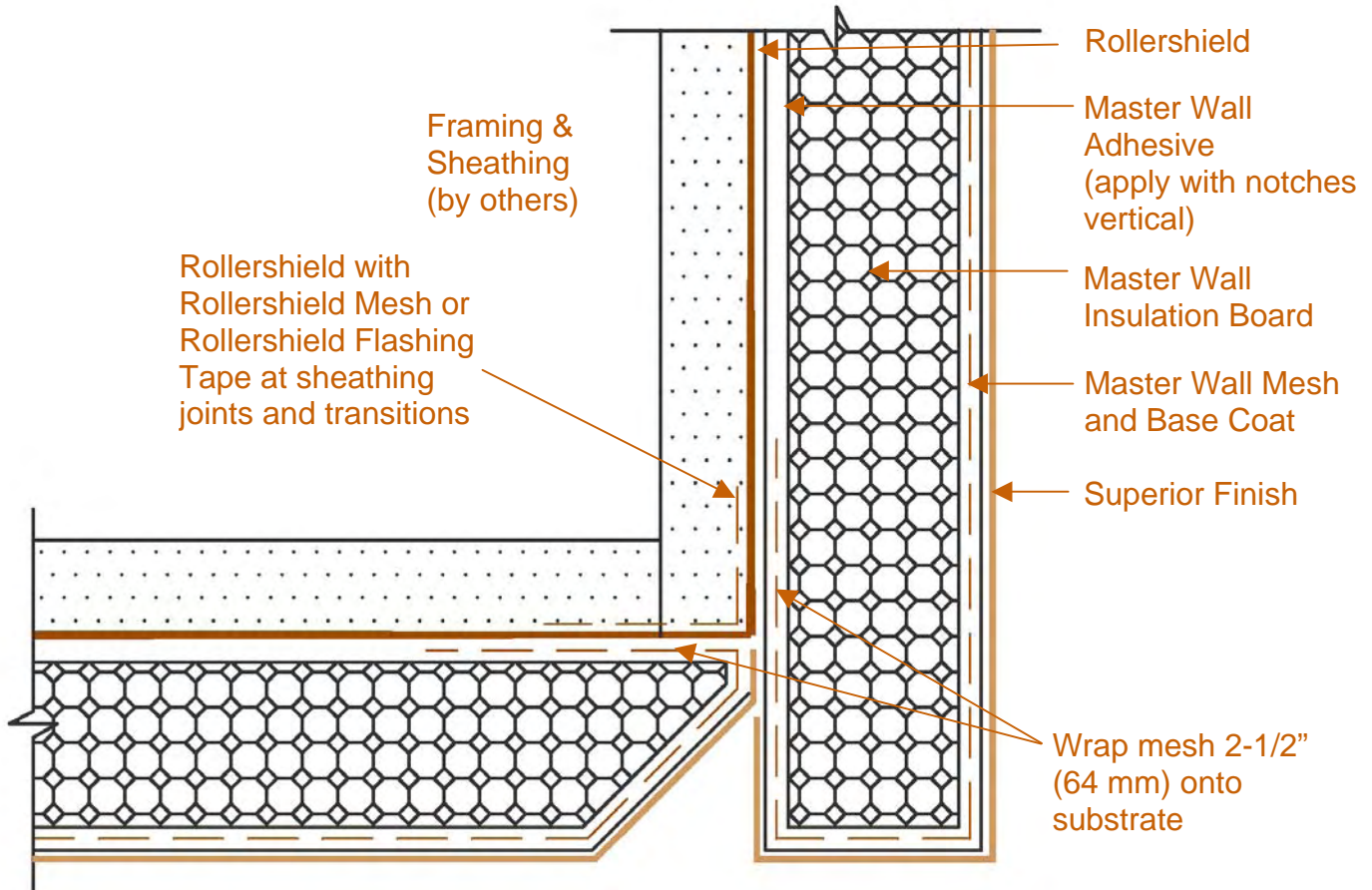


# Rollershield Drainage™ EIFS

Conceptual Details

Corporate • P.O. Box 397 • Fortson • Georgia • 31808 • 800-755-0825 • FAX 706-569-6704

Technical • 800-760-2861 • FAX 734-433-0930



## AFRS-19 Soffit/Drip Detail

These drawings relay the conceptual conditions of Master Wall Systems and are not the construction drawings. Ultimately the design and detailing of an entire wall system is the responsibility of a professional. These details will guide the design professional in the use of Master Wall Products. Master Wall disclaims design, warranty or construction intent or responsibility.

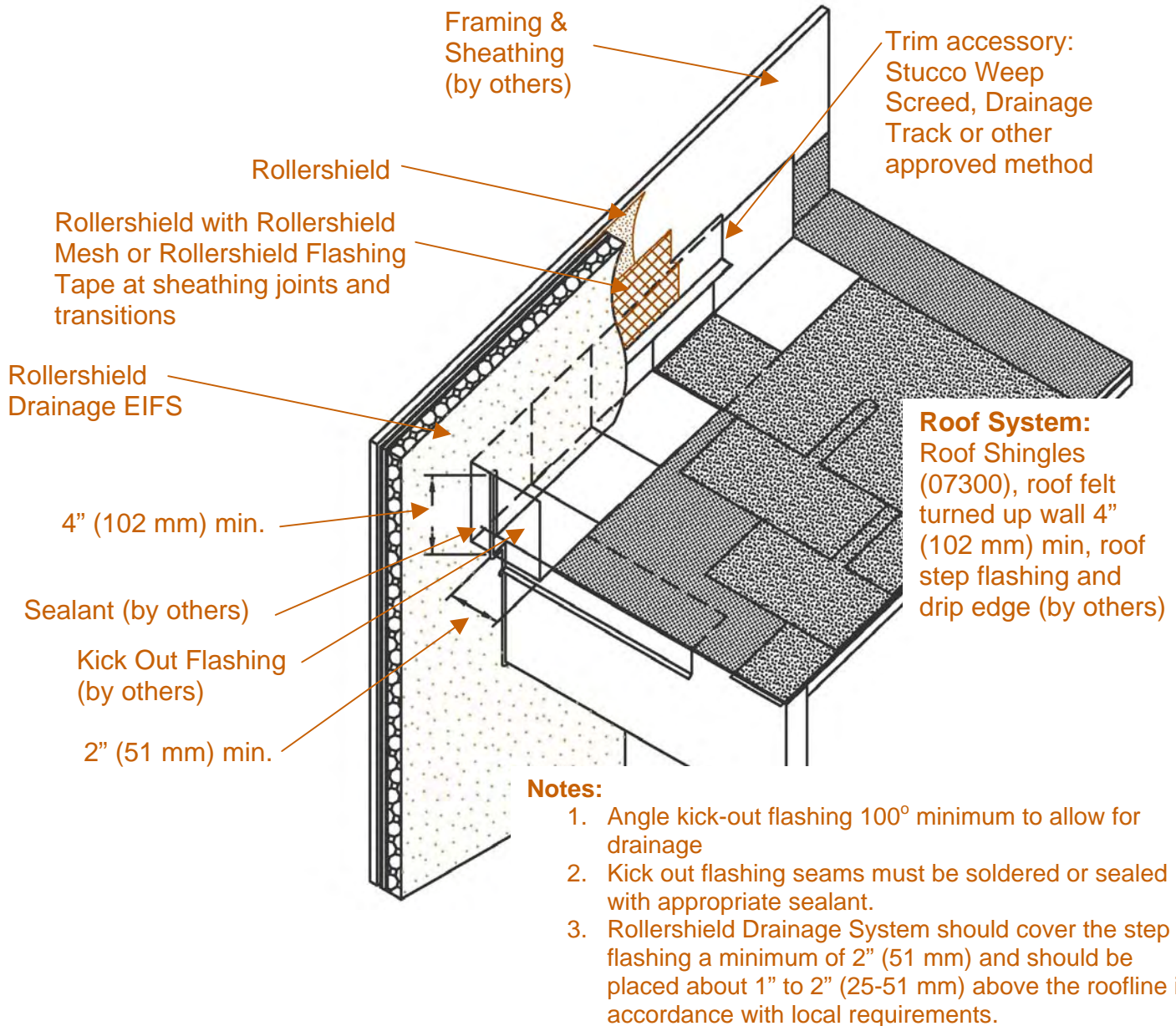


# Rollershield Drainage™ EIFS

Conceptual Details

Corporate • P.O. Box 397 • Fortson • Georgia • 31808 • 800-755-0825 • FAX 706-569-6704

Technical • 800-760-2861 • FAX 734-433-0930



## AFRS-20 Typical Roof/Wall Intersection

These drawings relay the conceptual conditions of Master Wall Systems and are not the construction drawings. Ultimately the design and detailing of an entire wall system is the responsibility of a professional. These details will guide the design professional in the use of Master Wall Products. Master Wall disclaims design, warranty or construction intent or responsibility.

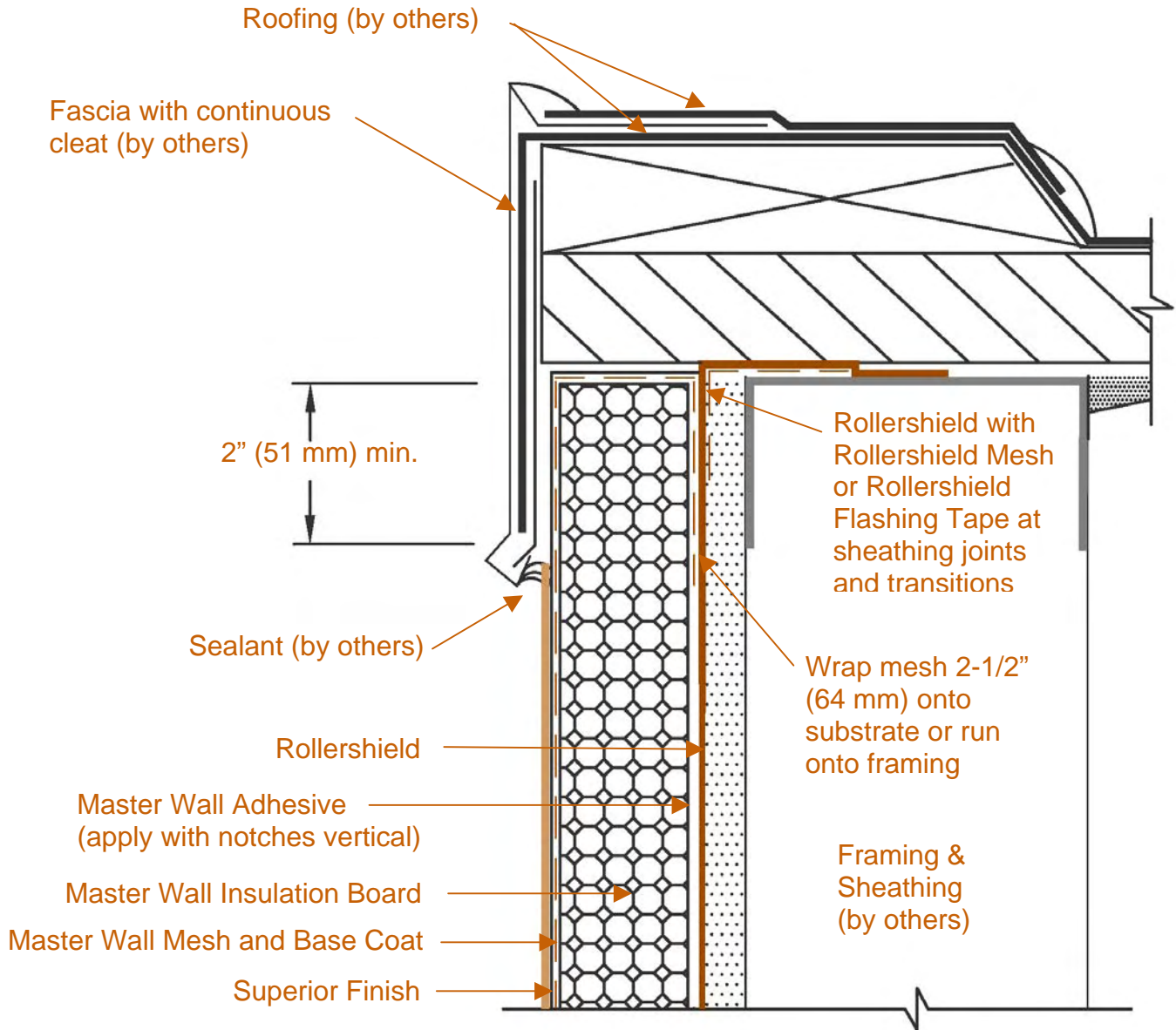


# Rollershield Drainage™ EIFS

Conceptual Details

Corporate • P.O. Box 397 • Fortson • Georgia • 31808 • 800-755-0825 • FAX 706-569-6704

Technical • 800-760-2861 • FAX 734-433-0930



## AFRS-21 Cap Detail

These drawings relay the conceptual conditions of Master Wall Systems and are not the construction drawings. Ultimately the design and detailing of an entire wall system is the responsibility of a professional. These details will guide the design professional in the use of Master Wall Products. Master Wall disclaims design, warranty or construction intent or responsibility.

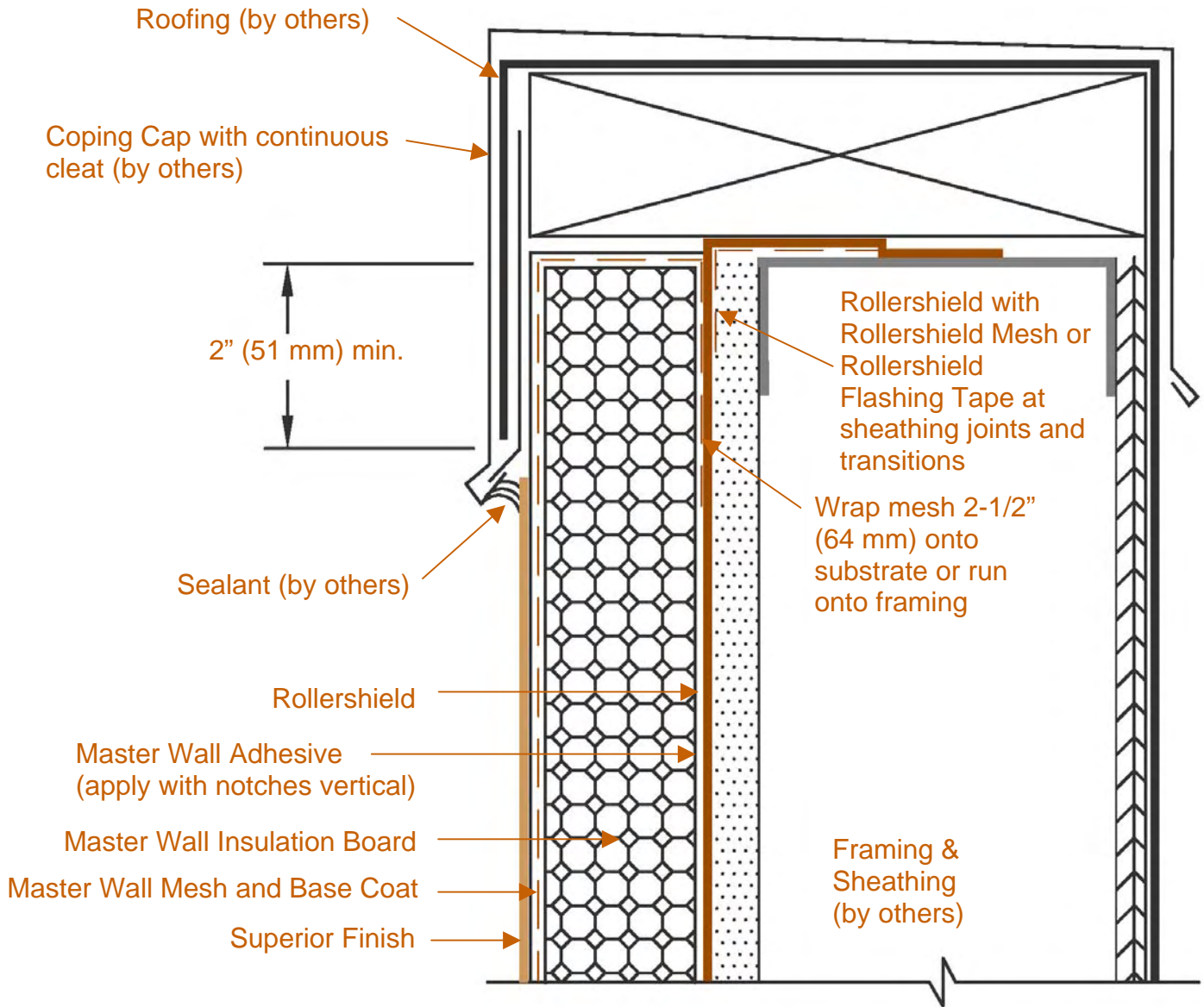


# Rollershield Drainage™ EIFS

Conceptual Details

Corporate • P.O. Box 397 • Fortson • Georgia • 31808 • 800-755-0825 • FAX 706-569-6704

Technical • 800-760-2861 • FAX 734-433-0930



## AFRS-22 Cap Detail

These drawings relay the conceptual conditions of Master Wall Systems and are not the construction drawings. Ultimately the design and detailing of an entire wall system is the responsibility of a professional. These details will guide the design professional in the use of Master Wall Products. Master Wall disclaims design, warranty or construction intent or responsibility.

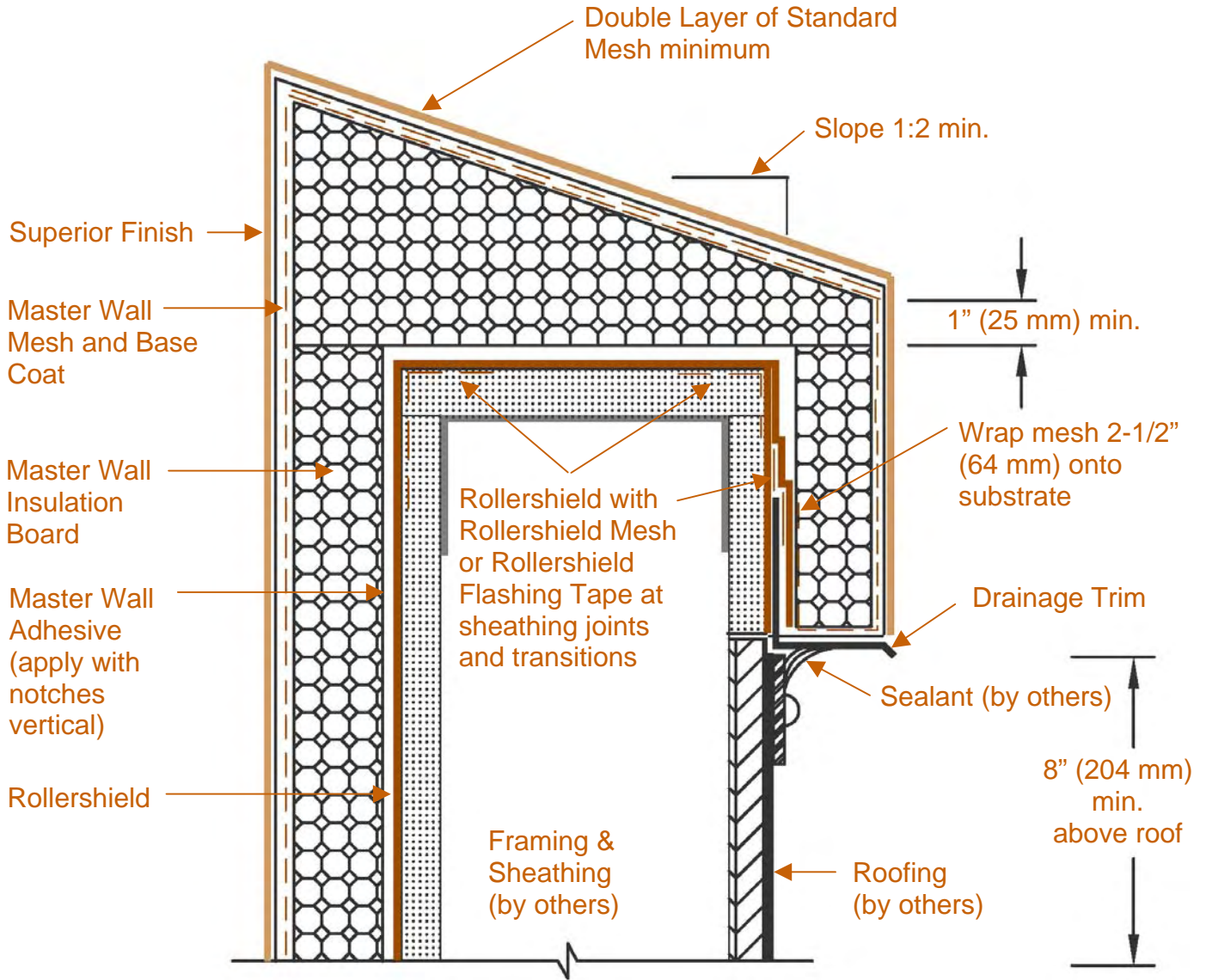


# Rollershield Drainage™ EIFS

Conceptual Details

Corporate • P.O. Box 397 • Fortson • Georgia • 31808 • 800-755-0825 • FAX 706-569-6704

Technical • 800-760-2861 • FAX 734-433-0930



## AFRS-24 Parapet Cap Detail – Max. 12" Wide

These drawings relay the conceptual conditions of Master Wall Systems and are not the construction drawings. Ultimately the design and detailing of an entire wall system is the responsibility of a professional. These details will guide the design professional in the use of Master Wall Products. Master Wall disclaims design, warranty or construction intent or responsibility.



**Master Wall, Inc**  
**Building a Culture of Excellence**

# Rollershield Drainage EIFS

## 7 Year Labor & Material Limited Warranty

Master Wall Inc. warrants the properly designed and installed Rollershield Drainage Exterior Insulation and Finish System and materials for 7 years from the date of installation. Master Wall Inc.'s exclusive liability under this warranty is to supply replacement materials and labor or corrective procedures, if it is shown that the materials supplied by Master Wall Inc., were defective when installed by the Master Wall Inc. certified applicator. Remedies shall be solely determined by Master Wall Inc. and no other warranties are expressed or implied. For a valid warranty, the system and products must be installed in accordance with Master Wall Inc.'s written recommendations, specifications, details, bulletins and other project-specific written recommendations. Master Wall Inc. must be notified in writing within 10 business days of the original discovery of the defect.

Master Wall Inc., is not responsible for structural conditions, design conditions beyond those noted in our literature, architecture, engineering or workmanship of any project. Drainage Systems are warranted to drain incidental water for the warranty period. Materials must be properly stored and applied in a timely manner. Workmanship, aesthetics and installation are beyond the scope of this warranty as are any deviations from Master Wall Inc. Documents not specifically approved in writing.

Abuse, misuse, excessive weather or environmental conditions beyond what the products or systems have been tested, designed or approved for is expressly limited. Certain colors with organic pigments are less fade-resistant than others. The building, system and products must be properly maintained in accordance with Master Wall Inc., documents, local environmental conditions and good building practices. In no case is Master Wall Inc. responsible for incidental and consequential damages.

**This warranty becomes effective only when all bills for the components of the system have been paid.**

**Except as stated, Master Wall, Inc., expressly disclaims any warranty of merchantability or fitness for a particular purpose. The above remedies are to be deemed exclusive.**

Project:

Applicator:

Warranty Date: