

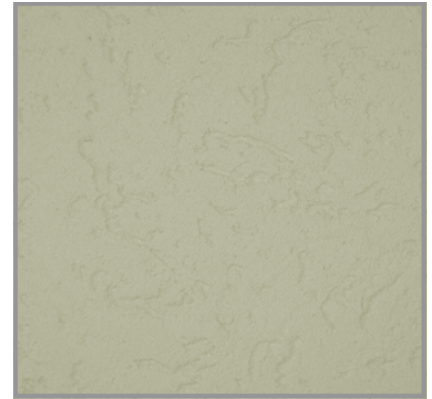


Superior Finishes



Superior Finish is Master Wall's textured finish line. Perfect West Texture is typically applied in a riled or circular pattern but can also be used vertically for a travertine look. Available in standard or custom colors, Perfect West may be applied over Master Wall Base Coats or prepared substrates including brick, masonry, concrete and stucco. Superior Finishes work great for interior applications as well. Perfect West is available in five-gallon (19L) pails and is typically troweled onto the wall surface with a stainless steel trowel.

Perfect West Texture Integrally Colored Finish



Finish Properties

Meets or Exceeds:
ASTM E84 Surface Burning
ASTM C67 Freeze/Thaw
ASTMD2247 Humidity
ASTM D3273 Mold/Mildew
ASTM D968 Abrasion
ASTM B117 Salt Spray
ASTM G53 Weathering
ASTM G23 Weathering

Approved Substrates

Master Wall Base Coats
Stucco
Prepared & Base Coated Surfaces of:
Brick
Concrete
Masonry
Others approved in writing

Application Procedure

Job Conditions - Air and substrate temperature for application of *Superior Finishes* must be 40°F (5°C) or higher and must remain 40°F (5°C) or higher for a minimum of 24 hours. Provide temporary protection to protect the wall system from damage until permanent flashings, caps and sealants are installed. Store materials within prescribed temperature limits and out of direct sunlight. High temperatures will reduce working times, Low temperatures and/or high humidity will extend working, set and dry times.

Preparation - The substrate must be approved by Master Wall Inc., clean, dry, structurally sound and free of efflorescence, oil, grease, form release agents and curing compounds or anything that would affect bond. Painted surfaces are not acceptable and must be removed. Concrete should cure for a minimum of 28 days. Stucco should be cured until clean, dry and hard—typically 14 days.

Interior drywall should be finished and made ready for paint. Prime surfaces with *Primecoat* primer prior to finishing.

Base Coats - Must be flat, dry hard, and free of efflorescence. Master Wall base coats must cure a minimum of 12 hours before application of Superior Finish. Substrates of brick, masonry or concrete should be leveled smooth using either Master Wall base coats or stucco.

Mixing - Thoroughly stir *Superior Finish* using a heavy duty 1/2" (12.7 mm) drill at 400 - 500 rpm and a heavy duty mixing paddle. Small amounts of clean, potable water may be added to obtain a workable consistency. To avoid color variations, add the same amount of water to each pail. Do not exceed 24 ounces (0.7L) of water per pail of finish.

Application — Apply a uniform thickness (about 1/16", 1.6 mm) of *Superior Finish* to the substrate using a stainless steel trowel. Spread evenly and then scrape the finish coat down to a thickness no greater than the largest aggregate in the material. Immediately float the finish coat using a plastic float to the desired texture. Always maintain a wet edge to achieve uniformity of texture and color.

For Professional Results

- Apply finish coats away from direct sunlight. Cold joints or color variations can occur if the finish dries too quickly.
- Consider priming stucco surfaces with *Primecoat* to even out finish absorption.
- Surfaces exposed to the weather must be sloped (6:12 minimum).
- Finishes are intended for the approved substrates listed above and should not be applied directly to gypsum board or insulation board products.

Statistics

Coverage (Estimated/varies)

Per Pail : 140-160 sf (13-15 sm)

Pail Weight: 70 lbs (32kg)

Working Time: 1/4 hour @ room temperature

Drying Time: 8-12 hours to set, 48-72 hours to dry @ room temperature

Application Range: 40°-110°F (5°-43°C)

Shelf Life: 2 years

Clean Up—Tools and equipment can be cleaned with soapy water while the *Superior Finish* is still wet.



Master Wall Inc.

Building a Culture of Excellence

Information contained in this product data sheet conforms to the standard detail recommendations and specifications for the installation of Master Wall Inc. products and is presented in good faith. Master Wall Inc. assumes no liability, expressed or implied as to the architecture, engineering, or workmanship of any project. This information may be concurrent with, or superseded by other applicable documents, such as specifications and details. Contact Master Wall Inc. for the most current product information.

P. O. Box 397
Fortson, GA 31808
800-755-0825
Technical 800-760-2861
www.masterwall.com