



Rollershield Drainage CIFS®

Conceptual Details with DV Roll

P.O. Box 397 • Fortson • Georgia • 31808 • 800-755-0825

Rollershield with Rollershield Mesh or Rollershield Flashing Tape at sheathing joints and transitions. Spot fasteners with Rollershield

Master Wall Adhesive (apply with notches vertical)

Application Note: Don't apply insulation adhesive where DV Roll is used. Also, it helps to notch or rasp the foam at this location to prevent bowing.

Framing & Sheathing (by others)

Superior Finish

DV Roll, attached with Staples or adhesive

Master Wall Mesh and Base Coat

Master Wall Insulation Board

Backwrap Mesh 2-1/2" (64 mm) onto DV Roll

Keep System 6" (152 mm) above grade

RSDV-01 Detail at Grade

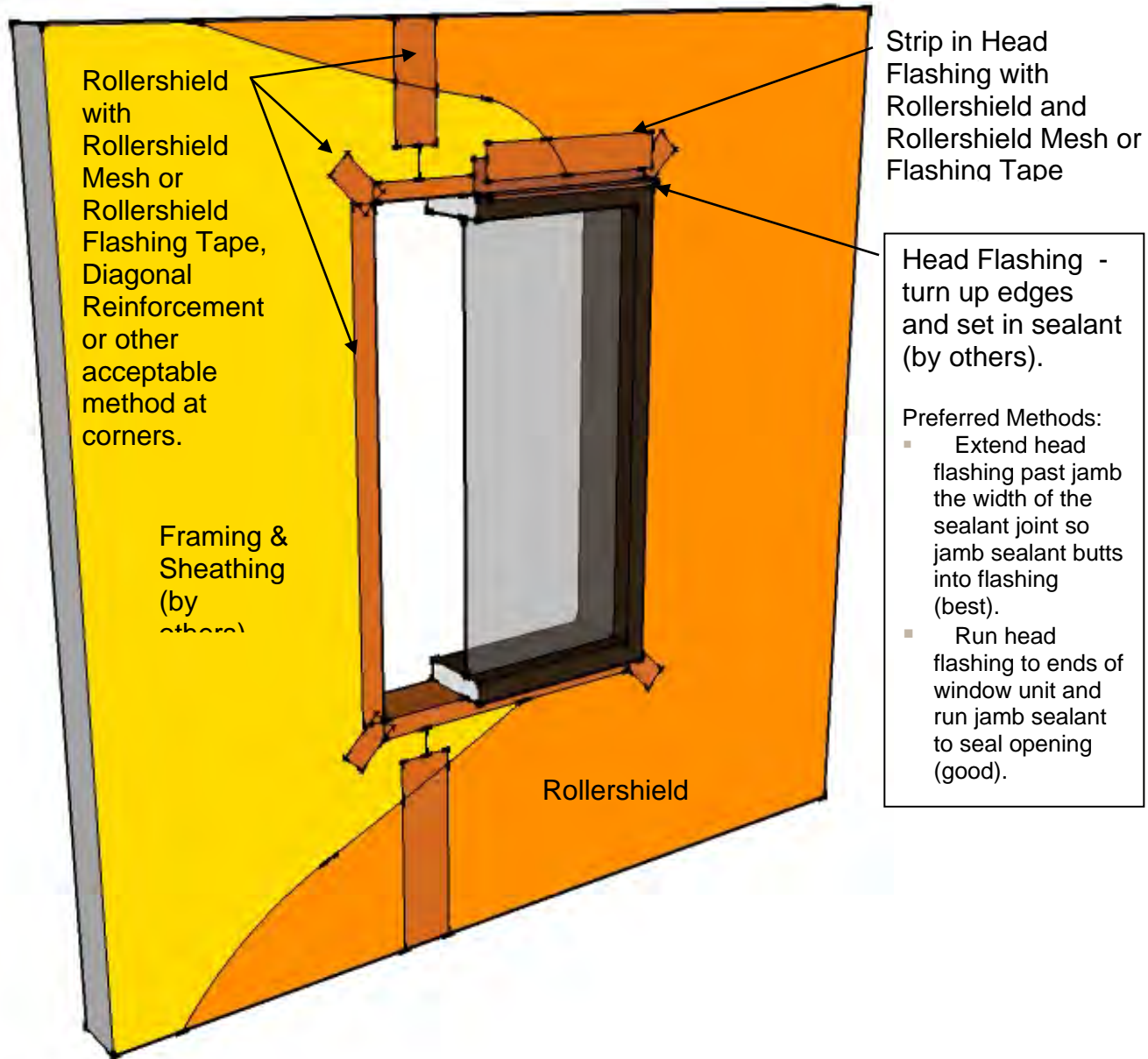
These drawings relay the conceptual conditions of Master Wall Systems and are not the construction drawings. Ultimately the design and detailing of an entire wall system is the responsibility of a professional. These details will guide the design professional in the use of Master Wall Products. Master Wall disclaims design, warranty or construction intent or responsibility.



Rollershield Drainage CIFS®

Conceptual Details with DV Roll

P.O. Box 397 • Fortson • Georgia • 31808 • 800-755-0825



RSDV-02 General Rollershield Application

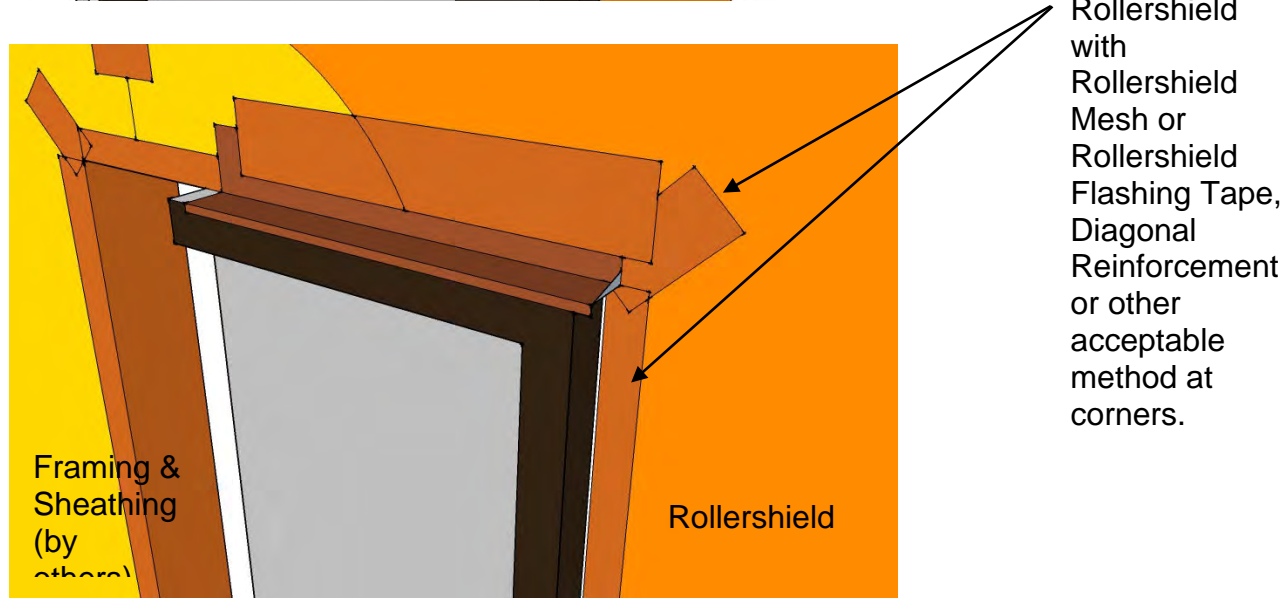
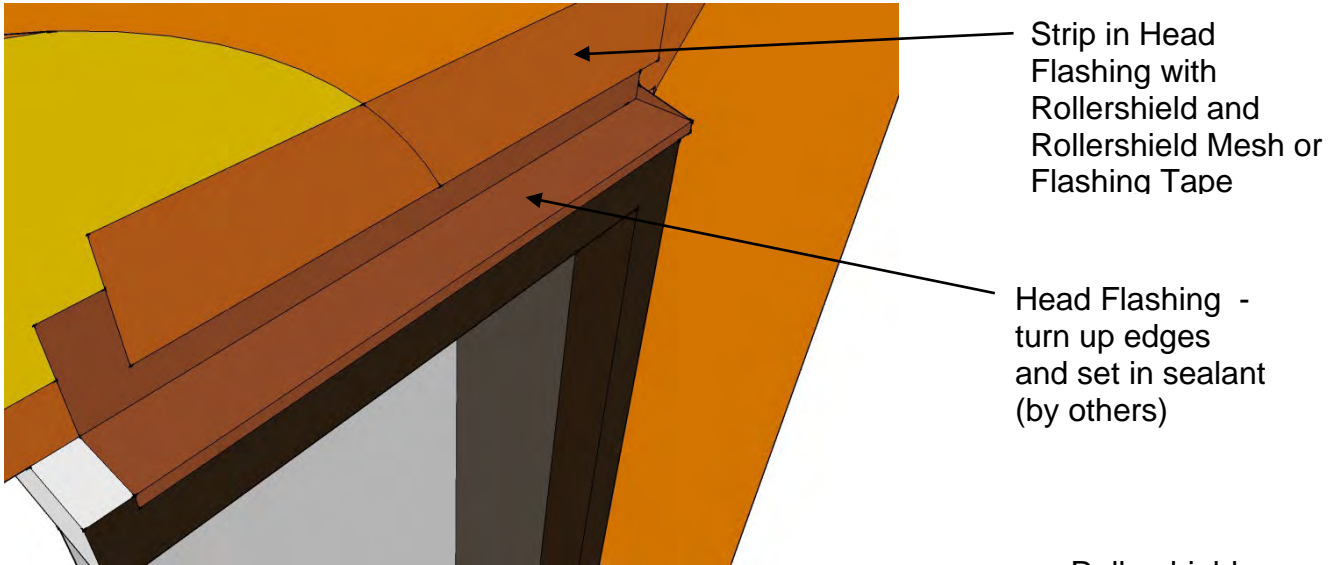
These drawings relay the conceptual conditions of Master Wall Systems and are not the construction drawings. Ultimately the design and detailing of an entire wall system is the responsibility of a professional. These details will guide the design professional in the use of Master Wall Products. Master Wall disclaims design, warranty or construction intent or responsibility.



Rollershield Drainage CIFS®

Conceptual Details with DV Roll

P.O. Box 397 • Fortson • Georgia • 31808 • 800-755-0825



RSDV-03 General Window Head Flashing

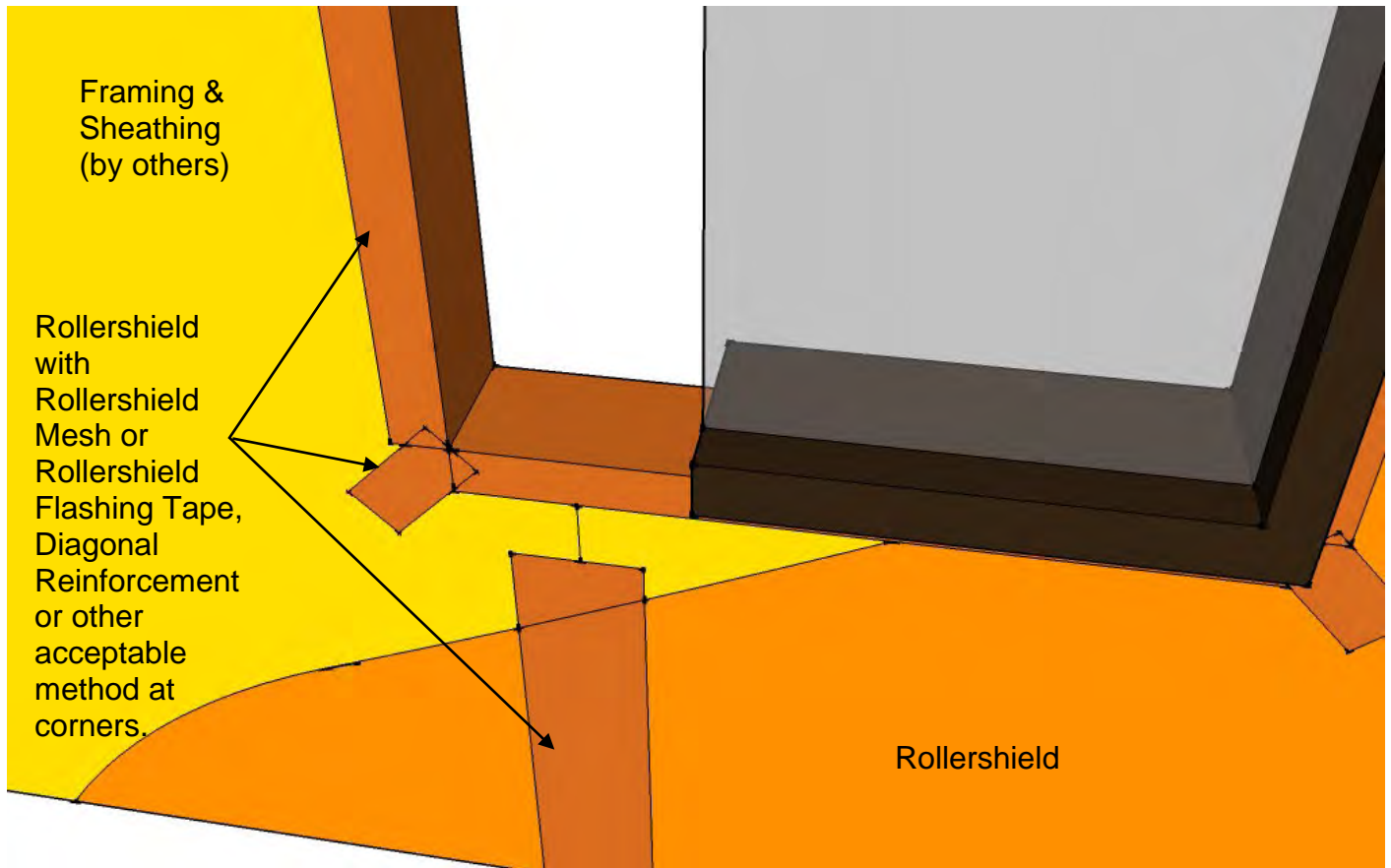
These drawings relay the conceptual conditions of Master Wall Systems and are not the construction drawings. Ultimately the design and detailing of an entire wall system is the responsibility of a professional. These details will guide the design professional in the use of Master Wall Products. Master Wall disclaims design, warranty or construction intent or responsibility.



Rollershield Drainage CIFS®

Conceptual Details with DV Roll

P.O. Box 397 • Fortson • Georgia • 31808 • 800-755-0825



RSDV-04 General Window Sill Flashing

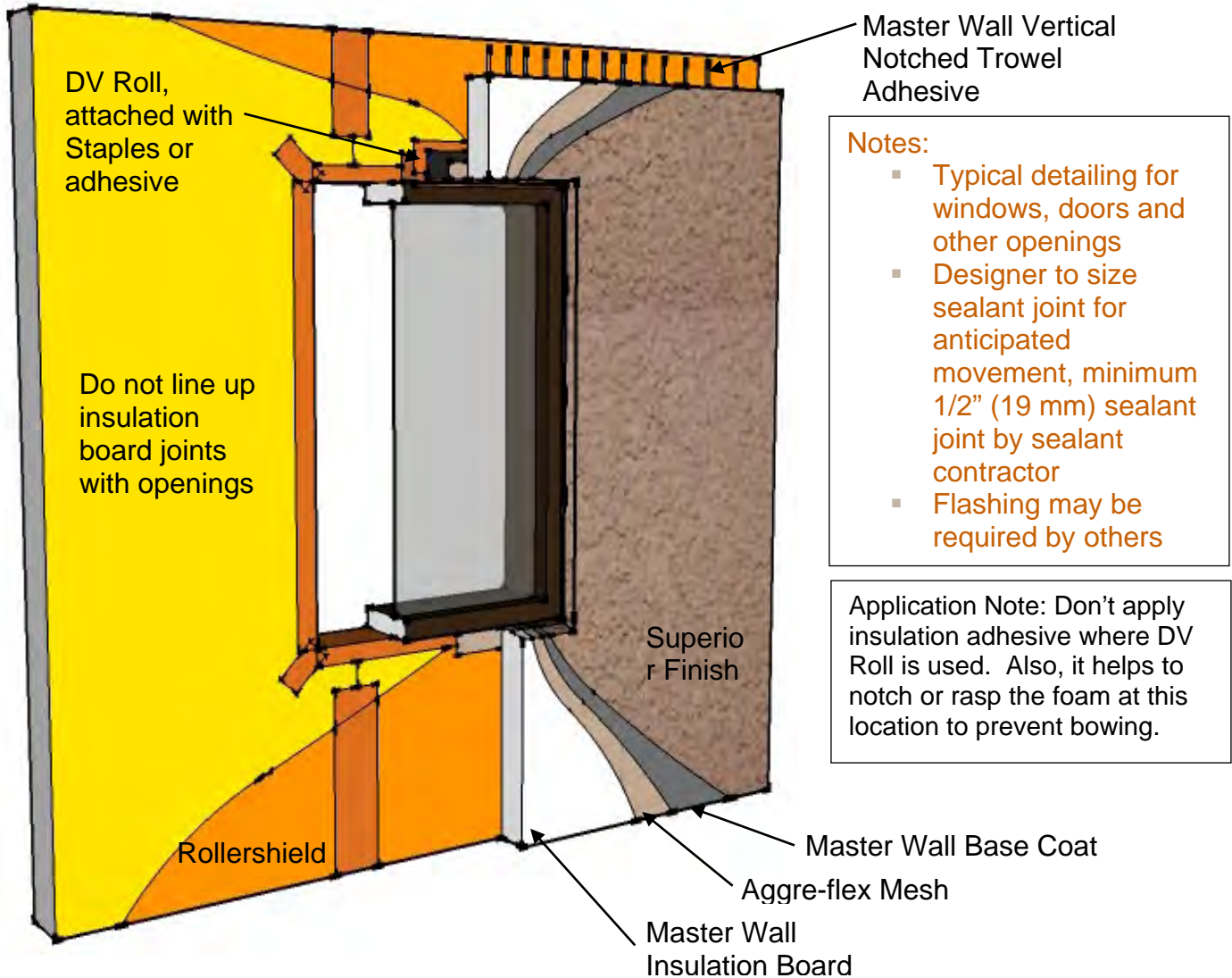
These drawings relay the conceptual conditions of Master Wall Systems and are not the construction drawings. Ultimately the design and detailing of an entire wall system is the responsibility of a professional. These details will guide the design professional in the use of Master Wall Products. Master Wall disclaims design, warranty or construction intent or responsibility.



Rollershield Drainage CIFS®

Conceptual Details with DV Roll

P.O. Box 397 • Fortson • Georgia • 31808 • 800-755-0825



RSDV-05 General Window Overview

These drawings relay the conceptual conditions of Master Wall Systems and are not the construction drawings. Ultimately the design and detailing of an entire wall system is the responsibility of a professional. These details will guide the design professional in the use of Master Wall Products. Master Wall disclaims design, warranty or construction intent or responsibility.



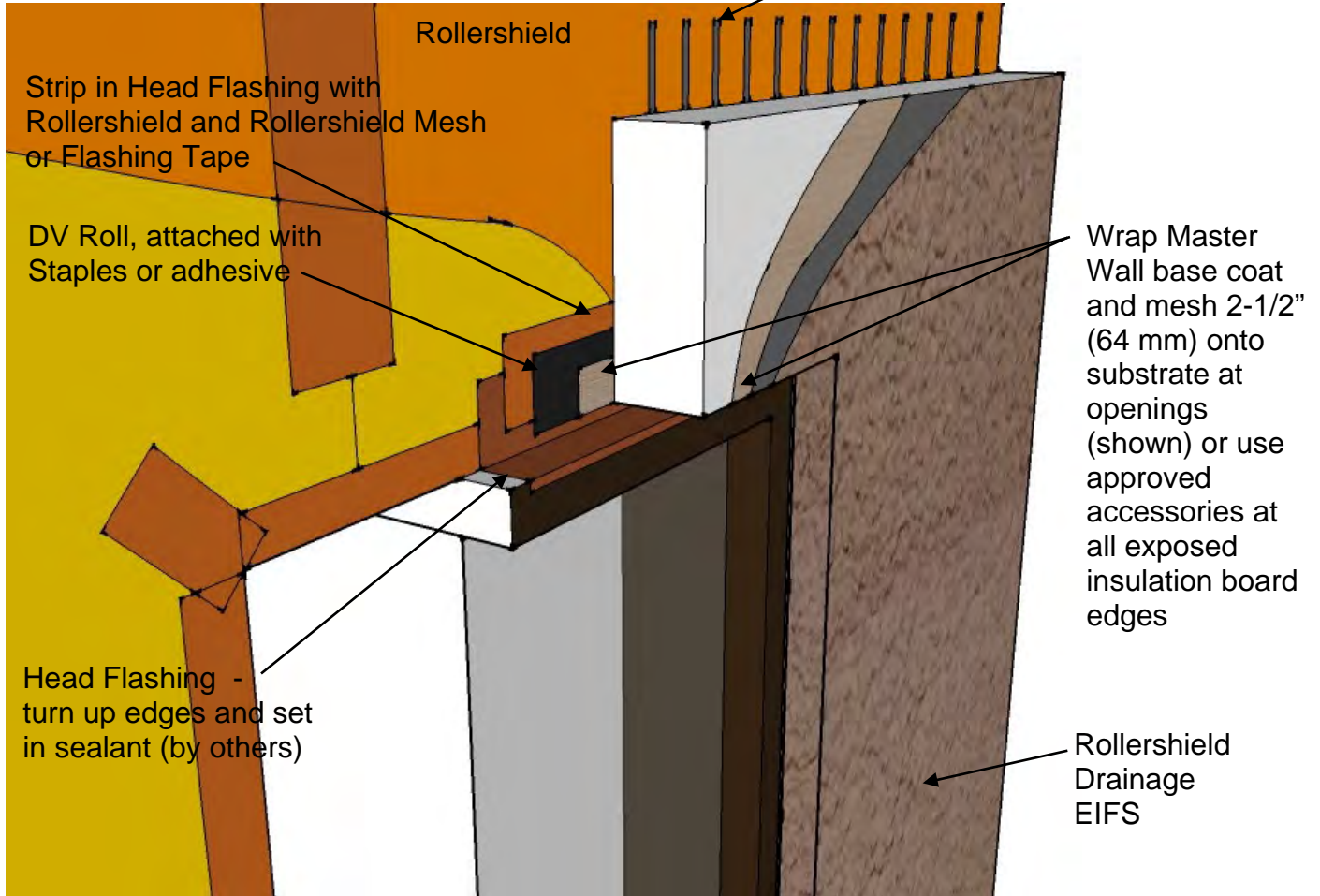
Rollershield Drainage CIFS®

Conceptual Details with DV Roll

P.O. Box 397 • Fortson • Georgia • 31808 • 800-755-0825

Application Note: Don't apply insulation adhesive where DV Roll is used. Also, it helps to notch or rasp the foam at this location to prevent bowing.

Master Wall Vertical
 Notched Trowel Adhesive



RSDV-06 Typical Window Head Flashing

These drawings relay the conceptual conditions of Master Wall Systems and are not the construction drawings. Ultimately the design and detailing of an entire wall system is the responsibility of a professional. These details will guide the design professional in the use of Master Wall Products. Master Wall disclaims design, warranty or construction intent or responsibility.



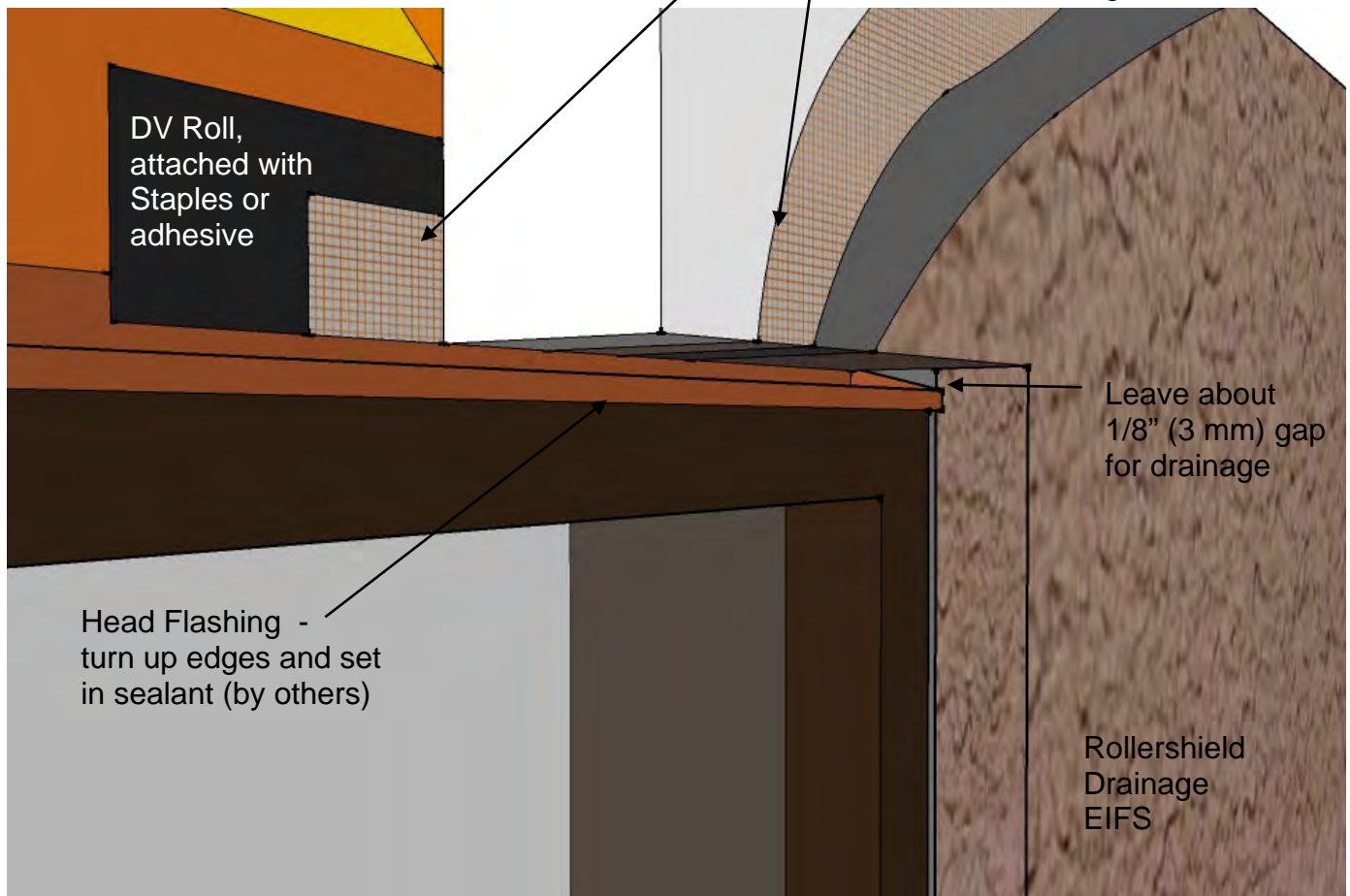
Rollershield Drainage CIFS®

Conceptual Details with DV Roll

P.O. Box 397 • Fortson • Georgia • 31808 • 800-755-0825

Application Note: Don't apply insulation adhesive where DV Roll is used. Also, it helps to notch or rasp the foam at this location to prevent bowing.

Wrap Master Wall base coat and mesh 2-1/2" (64 mm) onto substrate at openings (shown) or use approved accessories at all exposed insulation board edges



RSDV-07 Typical Window Head Flashing

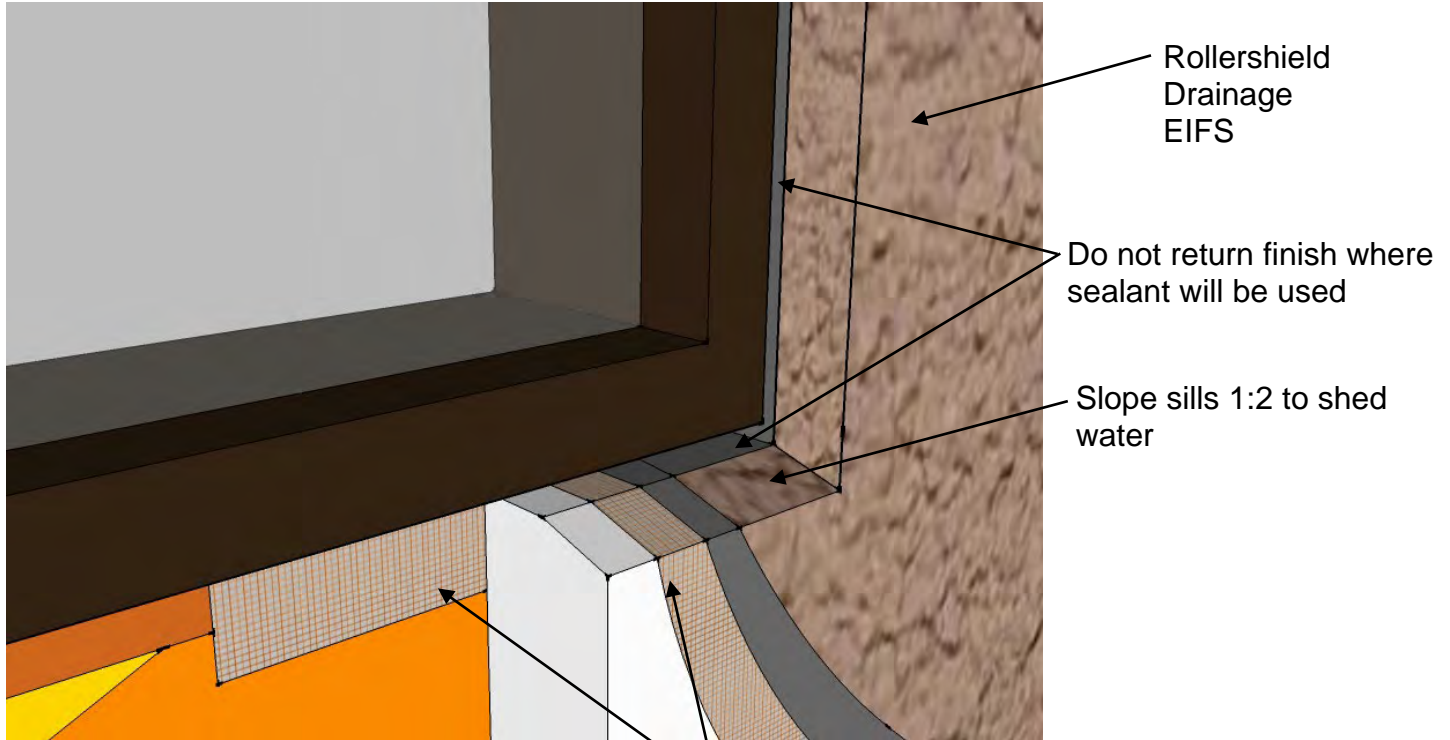
These drawings relay the conceptual conditions of Master Wall Systems and are not the construction drawings. Ultimately the design and detailing of an entire wall system is the responsibility of a professional. These details will guide the design professional in the use of Master Wall Products. Master Wall disclaims design, warranty or construction intent or responsibility.



Rollershield Drainage CIFS®

Conceptual Details with DV Roll

P.O. Box 397 • Fortson • Georgia • 31808 • 800-755-0825



Notes:

- Typical detailing for windows, doors and other openings
- Designer to size sealant joint for anticipated movement, minimum 1/2" (19 mm) sealant joint by sealant contractor
- Flashing may be required by others

Wrap Master Wall base coat and mesh 2-1/2" (64 mm) onto substrate at openings (shown) or use approved accessories at all exposed insulation board edges

RSDV-08 Typical Window Sill Detail

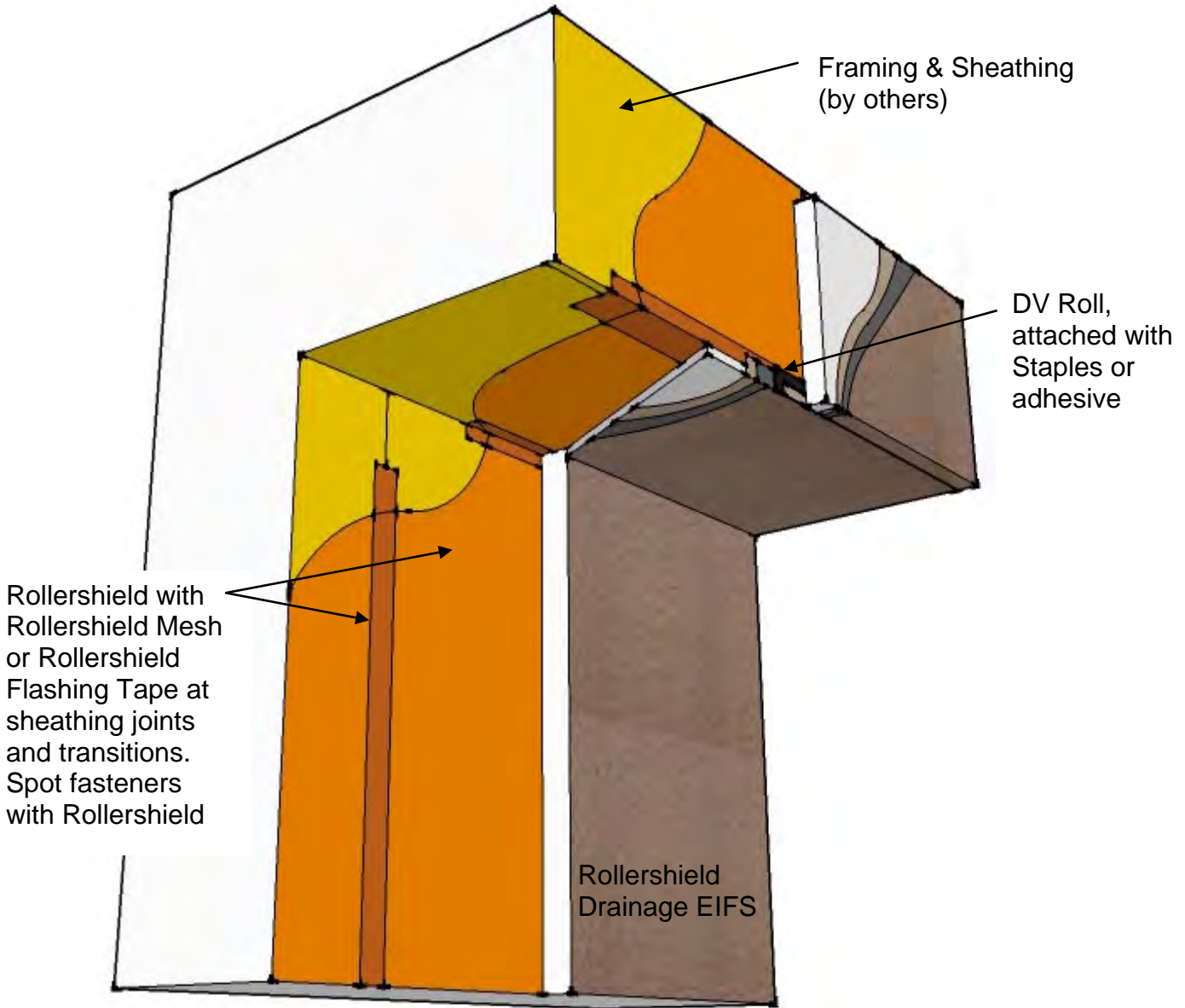
These drawings relay the conceptual conditions of Master Wall Systems and are not the construction drawings. Ultimately the design and detailing of an entire wall system is the responsibility of a professional. These details will guide the design professional in the use of Master Wall Products. Master Wall disclaims design, warranty or construction intent or responsibility.



Rollershield Drainage EIFS®

Conceptual Details with DV Roll

P.O. Box 397 • Fortson • Georgia • 31808 • 800-755-0825



RSDV-09 Typical Soffit/Drip

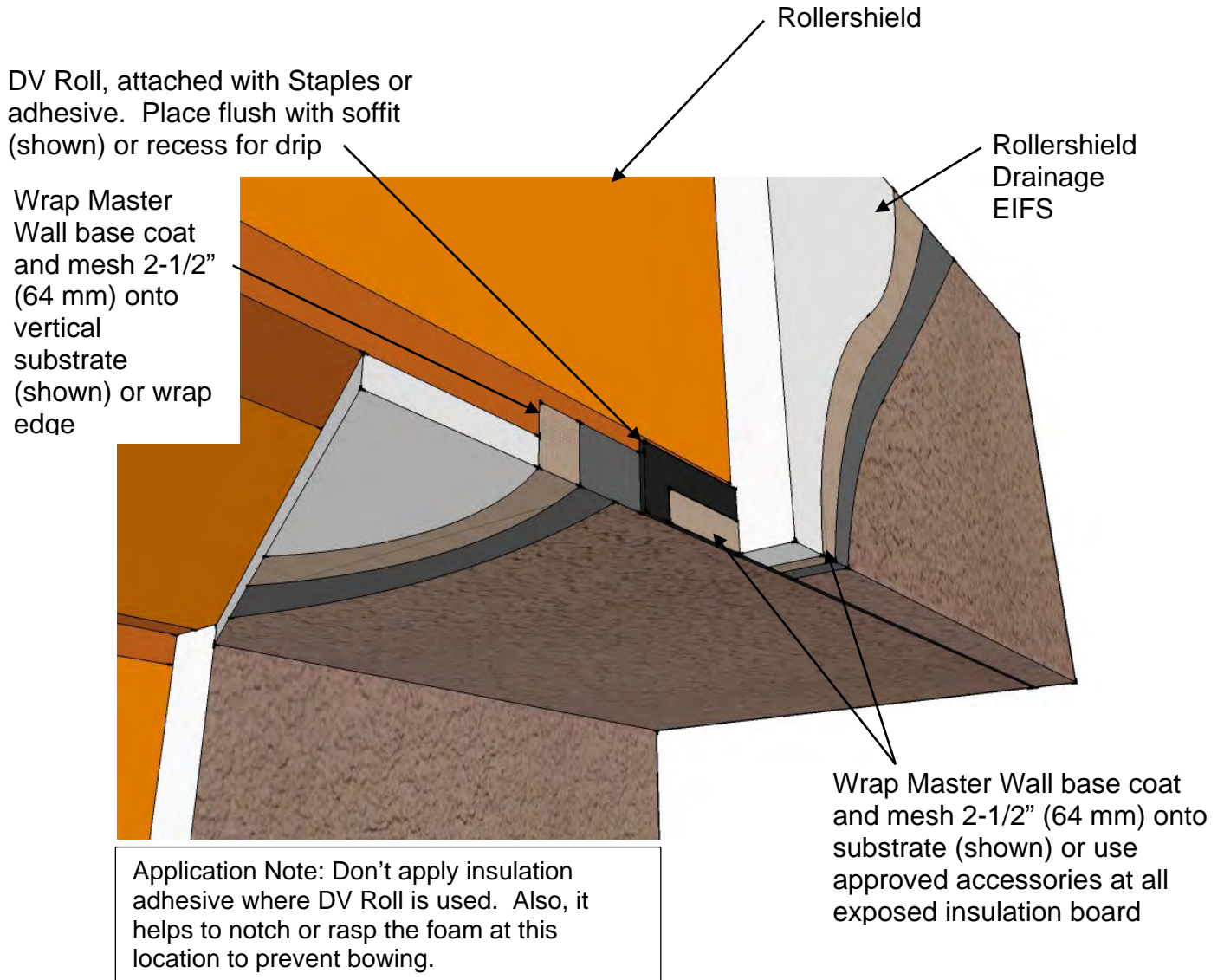
These drawings relay the conceptual conditions of Master Wall Systems and are not the construction drawings. Ultimately the design and detailing of an entire wall system is the responsibility of a professional. These details will guide the design professional in the use of Master Wall Products. Master Wall disclaims design, warranty or construction intent or responsibility.



Rollershield Drainage CIFS®

Conceptual Details with DV Roll

P.O. Box 397 • Fortson • Georgia • 31808 • 800-755-0825



RSDV-10 Typical Soffit/Drip Detail

These drawings relay the conceptual conditions of Master Wall Systems and are not the construction drawings. Ultimately the design and detailing of an entire wall system is the responsibility of a professional. These details will guide the design professional in the use of Master Wall Products. Master Wall disclaims design, warranty or construction intent or responsibility.



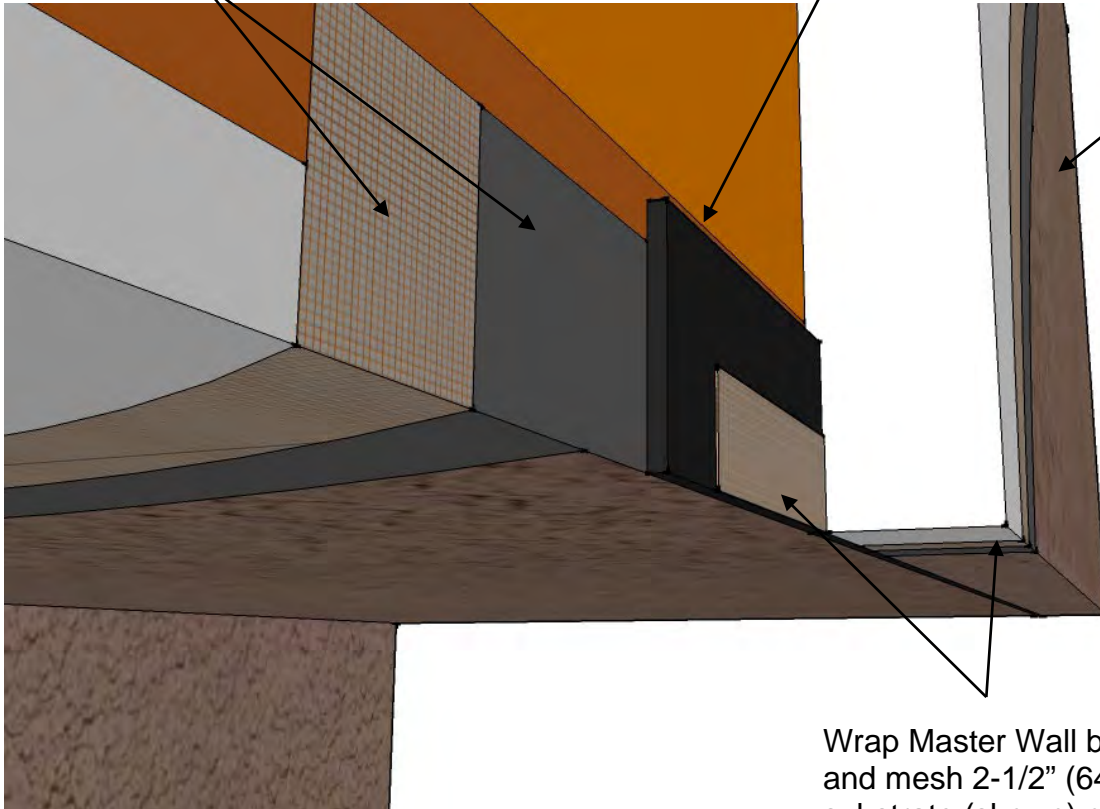
Rollershield Drainage CIFS®

Conceptual Details with DV Roll

P.O. Box 397 • Fortson • Georgia • 31808 • 800-755-0825

Wrap Master Wall base coat and mesh 2-1/2" (64 mm) onto vertical substrate (shown) or wrap edge

DV Roll, attached with Staples or adhesive. Place flush with soffit (shown) or recess for drip



Rollershield Drainage EIFS

Wrap Master Wall base coat and mesh 2-1/2" (64 mm) onto substrate (shown) or use approved accessories at all exposed insulation board

Application Note: Don't apply insulation adhesive where DV Roll is used. Also, it helps to notch or rasp the foam at this location to prevent bowing.

RSDV-11 Typical Soffit Detail

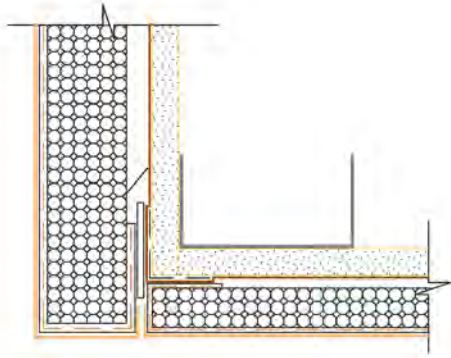
These drawings relay the conceptual conditions of Master Wall Systems and are not the construction drawings. Ultimately the design and detailing of an entire wall system is the responsibility of a professional. These details will guide the design professional in the use of Master Wall Products. Master Wall disclaims design, warranty or construction intent or responsibility.



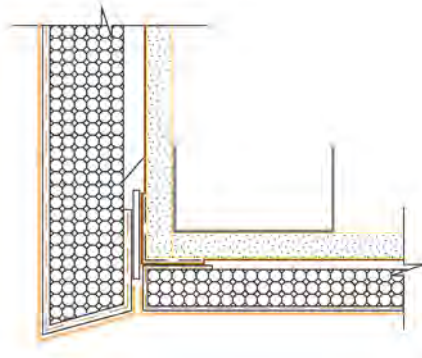
Rollershield Drainage CIFS®

Conceptual Details with DV Roll

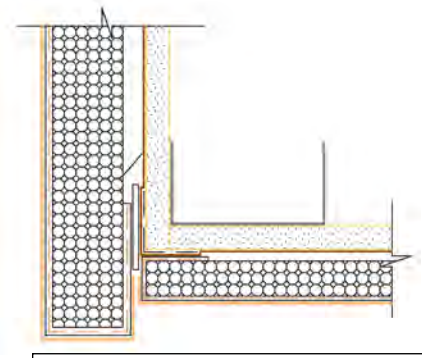
P.O. Box 397 • Fortson • Georgia • 31808 • 800-755-0825



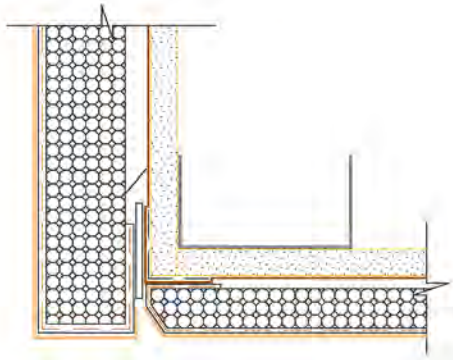
Square – Crisp edges with minimal visual focus



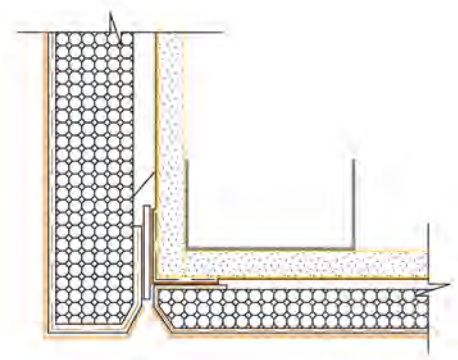
Wedge – The beveled edge creates a drip



Dropped Fascia – The fascia creates a distinct edge definition between the fascia and soffit and acts as



Modern Drip – A back bevel on the soffit creates a thin drip profile



Recessed V – A variation of the traditional drip but with drainage

RSDV-12 Common Soffit/Drip Profiles

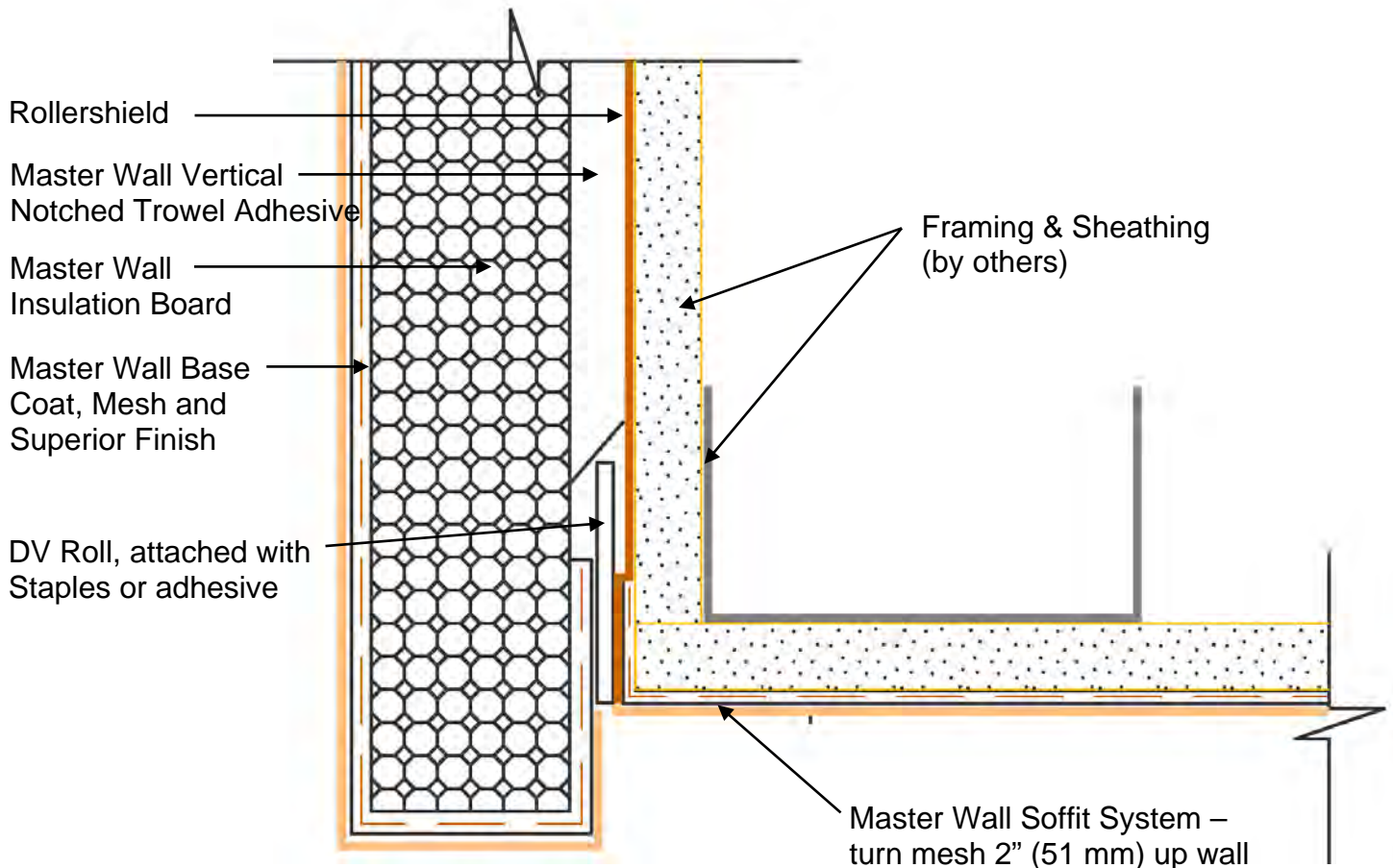
These drawings relay the conceptual conditions of Master Wall Systems and are not the construction drawings. Ultimately the design and detailing of an entire wall system is the responsibility of a professional. These details will guide the design professional in the use of Master Wall Products. Master Wall disclaims design, warranty or construction intent or responsibility.



Rollershield Drainage CIFS®

Conceptual Details with DV Roll

P.O. Box 397 • Fortson • Georgia • 31808 • 800-755-0825



Application Note: Don't apply insulation adhesive where DV Roll is used. Also, it helps to notch or rasp the foam at this location to prevent bowing.

RSDV-13 Soffit/Drip with Soffit System

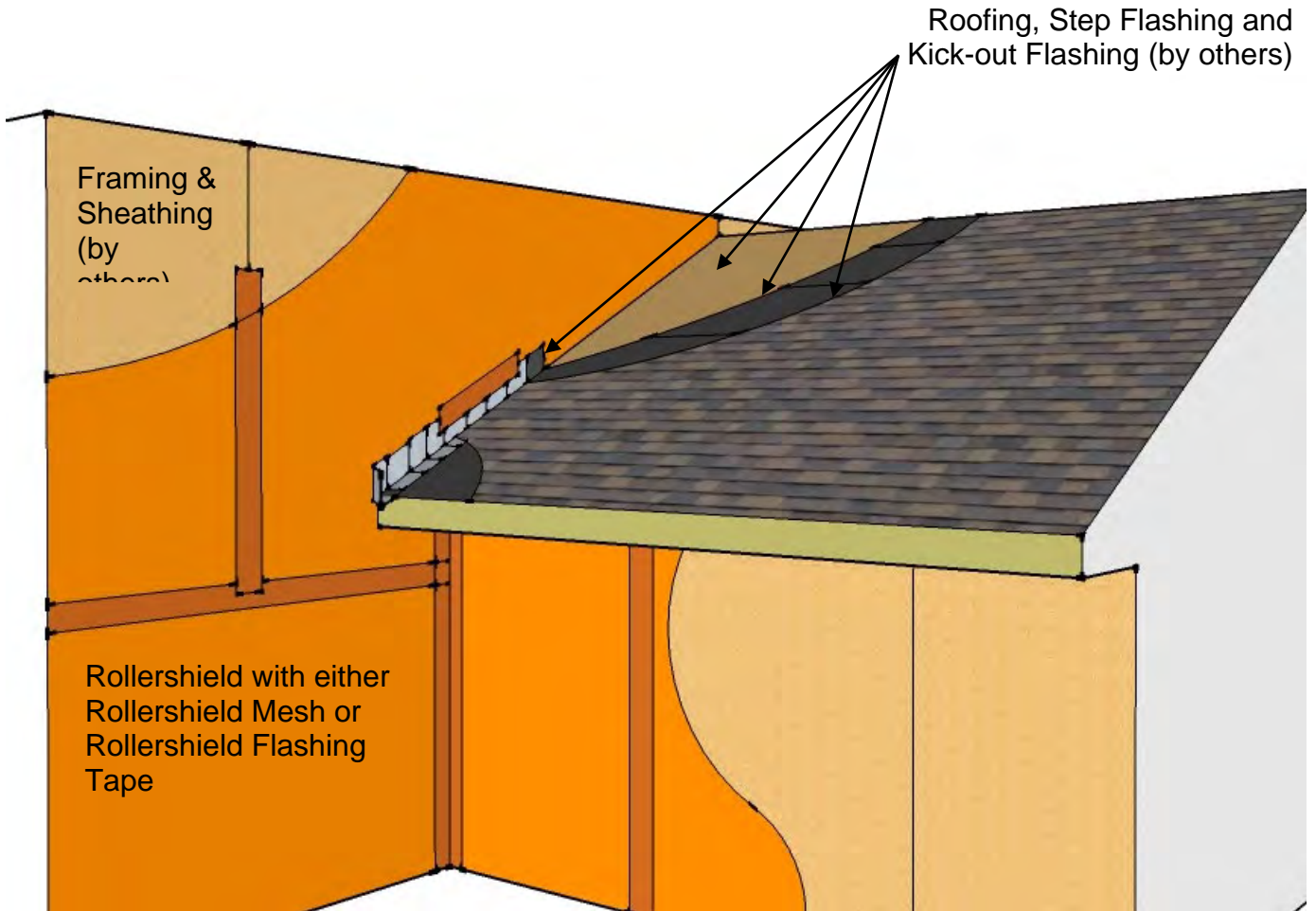
These drawings relay the conceptual conditions of Master Wall Systems and are not the construction drawings. Ultimately the design and detailing of an entire wall system is the responsibility of a professional. These details will guide the design professional in the use of Master Wall Products. Master Wall disclaims design, warranty or construction intent or responsibility.



Rollershield Drainage CIFS®

Conceptual Details with DV Roll

P.O. Box 397 • Fortson • Georgia • 31808 • 800-755-0825



RSDV-14 General Rollershield Application at Roof Edge

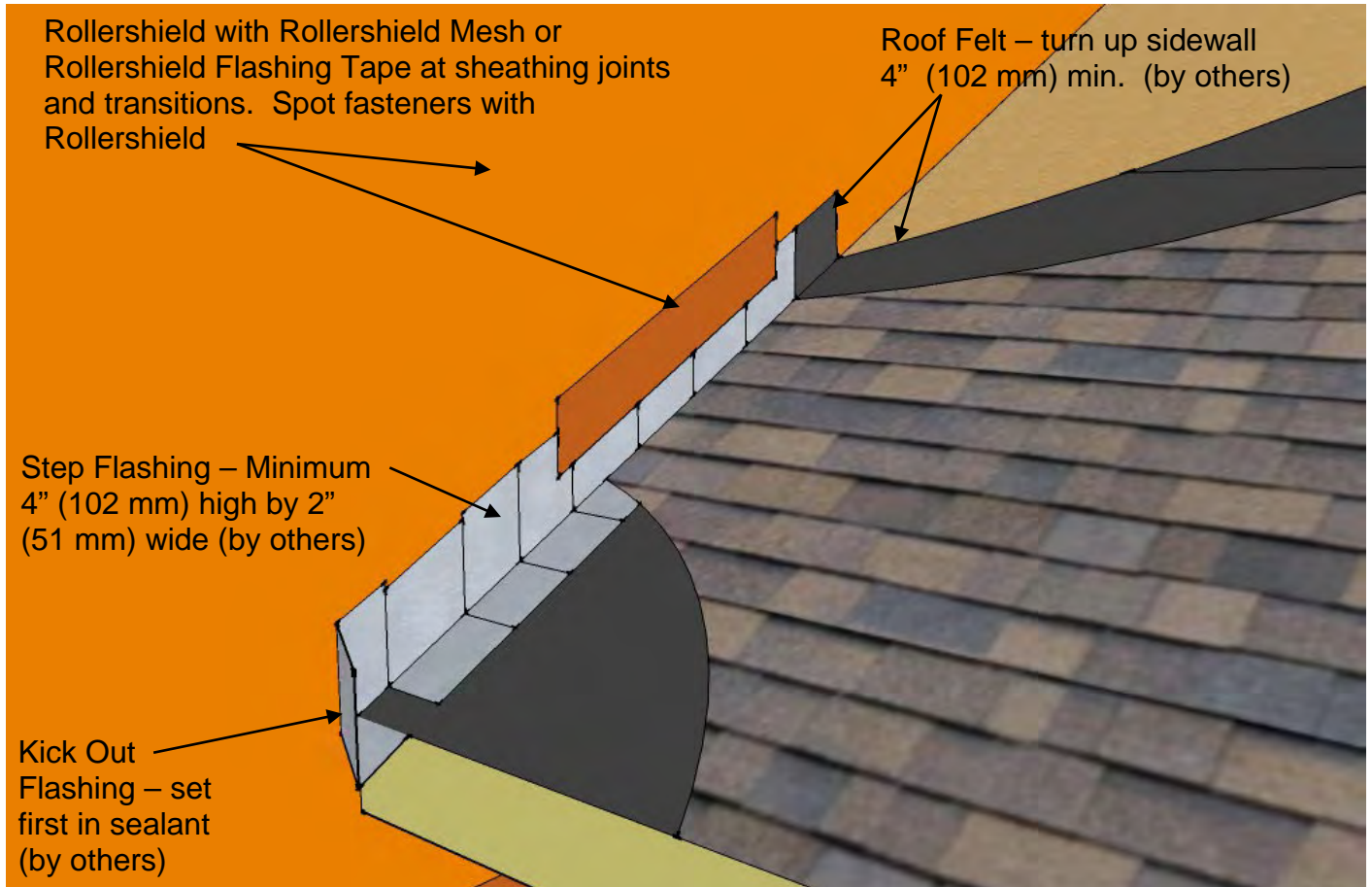
These drawings relay the conceptual conditions of Master Wall Systems and are not the construction drawings. Ultimately the design and detailing of an entire wall system is the responsibility of a professional. These details will guide the design professional in the use of Master Wall Products. Master Wall disclaims design, warranty or construction intent or responsibility.



Rollershield Drainage CIFS®

Conceptual Details with DV Roll

P.O. Box 397 • Fortson • Georgia • 31808 • 800-755-0825



RSDV-15 Typical Rollershield Application at Kick Out Flashing

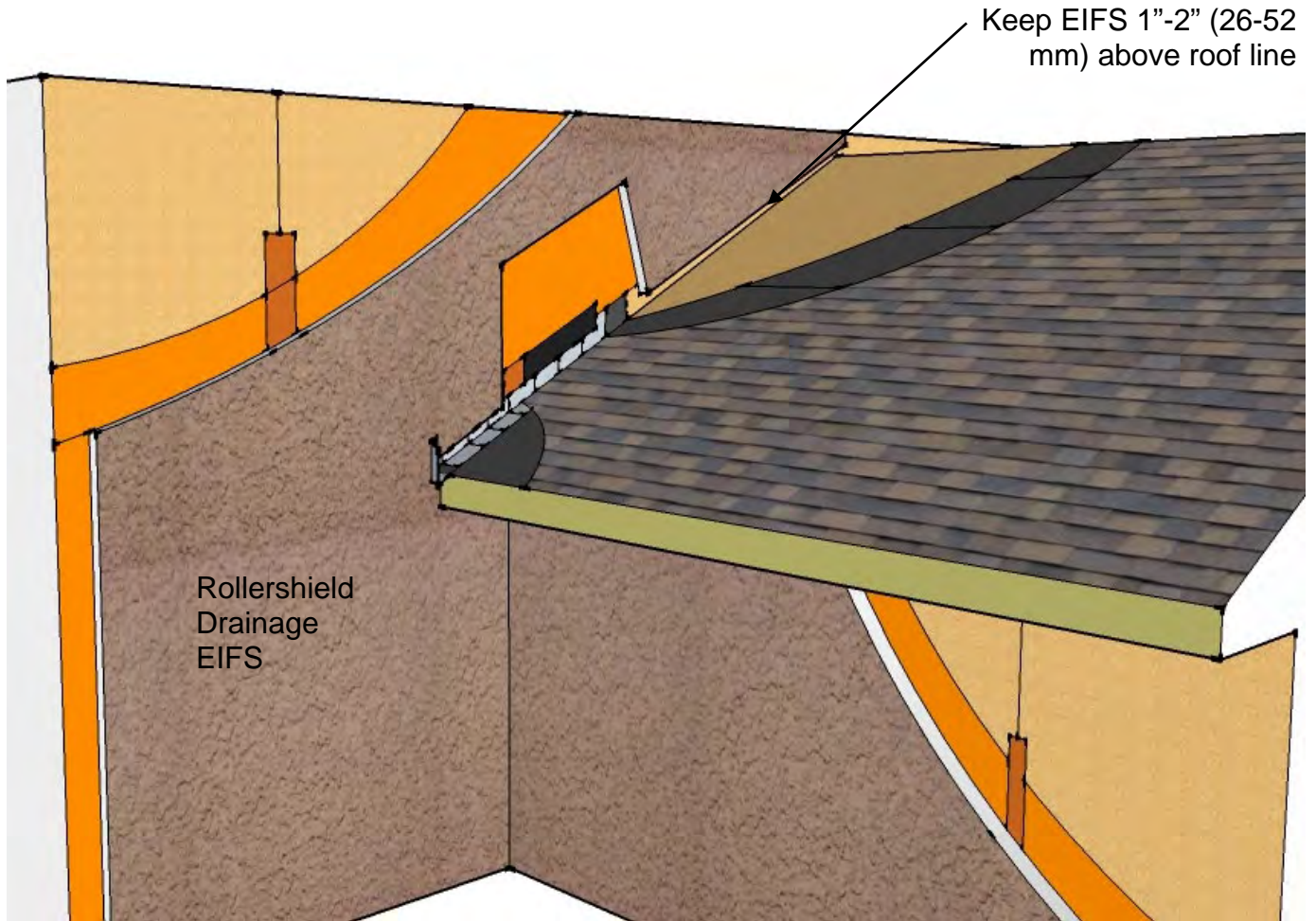
These drawings relay the conceptual conditions of Master Wall Systems and are not the construction drawings. Ultimately the design and detailing of an entire wall system is the responsibility of a professional. These details will guide the design professional in the use of Master Wall Products. Master Wall disclaims design, warranty or construction intent or responsibility.



Rollershield Drainage CIFS®

Conceptual Details with DV Roll

P.O. Box 397 • Fortson • Georgia • 31808 • 800-755-0825



RSDV-16 General Rollershield Application at Kick Out Flashing

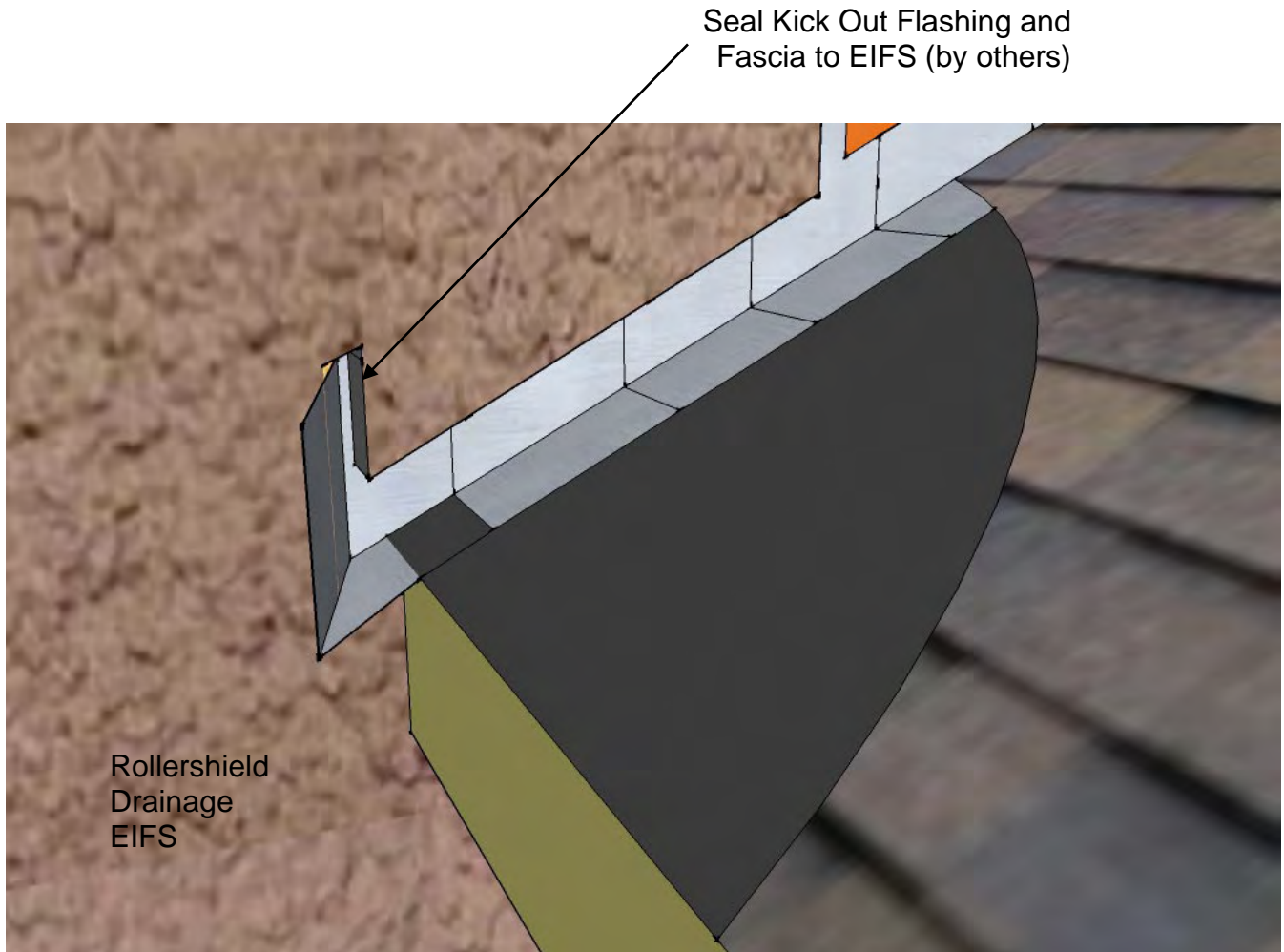
These drawings relay the conceptual conditions of Master Wall Systems and are not the construction drawings. Ultimately the design and detailing of an entire wall system is the responsibility of a professional. These details will guide the design professional in the use of Master Wall Products. Master Wall disclaims design, warranty or construction intent or responsibility.



Rollershield Drainage EIFS®

Conceptual Details with DV Roll

P.O. Box 397 • Fortson • Georgia • 31808 • 800-755-0825



RSDV-17 Detail at Kick Out Flashing

These drawings relay the conceptual conditions of Master Wall Systems and are not the construction drawings. Ultimately the design and detailing of an entire wall system is the responsibility of a professional. These details will guide the design professional in the use of Master Wall Products. Master Wall disclaims design, warranty or construction intent or responsibility.

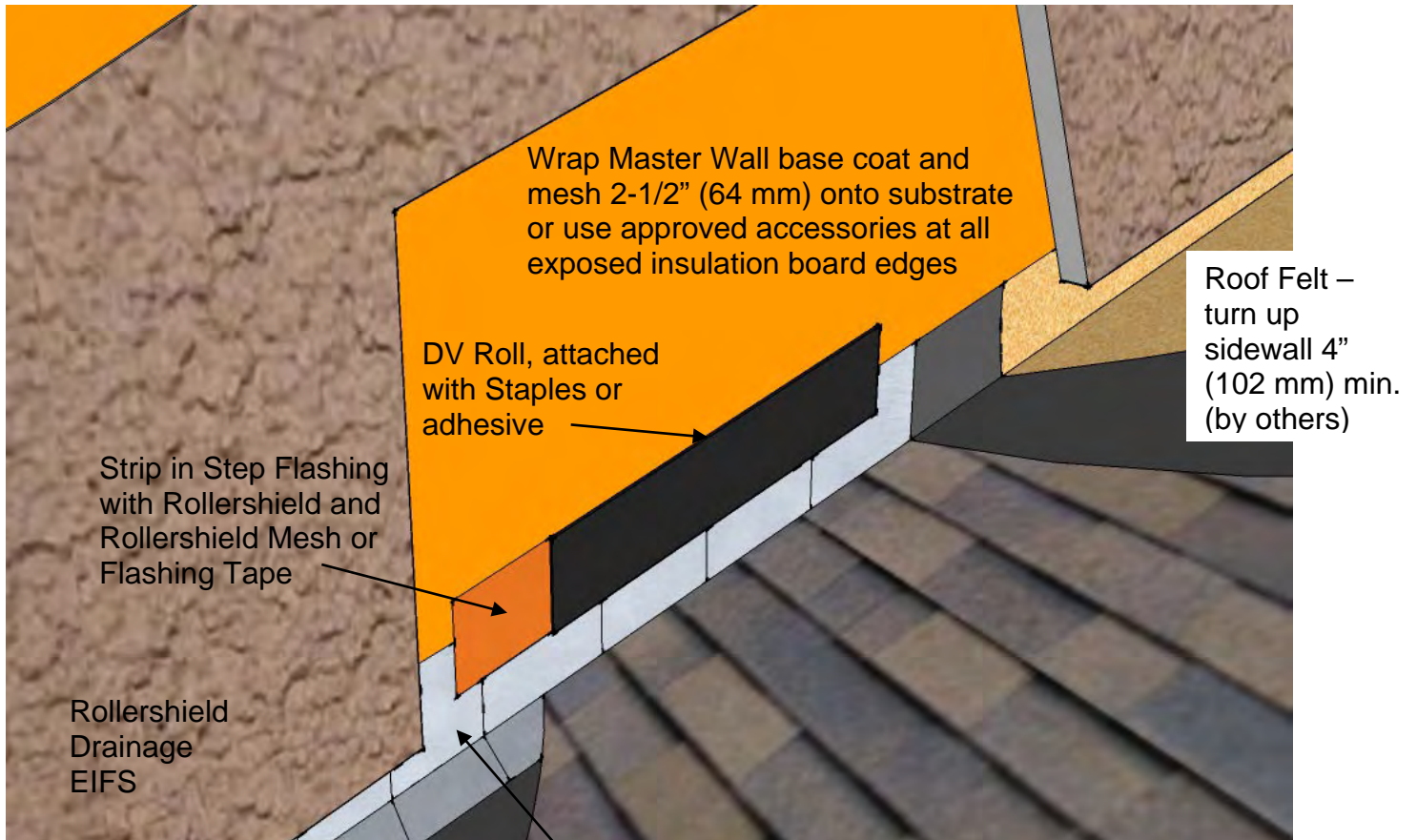


Rollershield Drainage EIFS®

Conceptual Details with DV Roll

P.O. Box 397 • Fortson • Georgia • 31808 • 800-755-0825

Keep EIFS 1"-2" (26-52 mm) above roof line



Application Note: Don't apply insulation adhesive where DV Roll is used. Also, it helps to notch or rasp the foam at this location to prevent bowing.

Step Flashing – Minimum 4" (102 mm) high by 2" (51 mm) wide (by others)

RSDV-18 Step Flashing Detail

These drawings relay the conceptual conditions of Master Wall Systems and are not the construction drawings. Ultimately the design and detailing of an entire wall system is the responsibility of a professional. These details will guide the design professional in the use of Master Wall Products. Master Wall disclaims design, warranty or construction intent or responsibility.