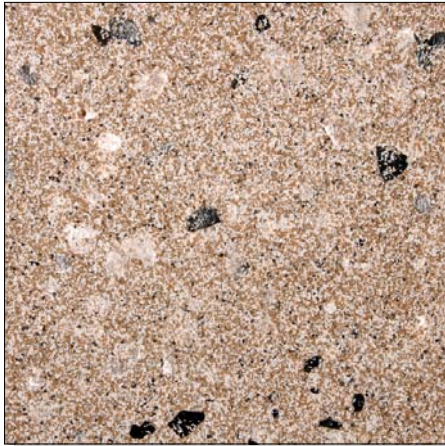
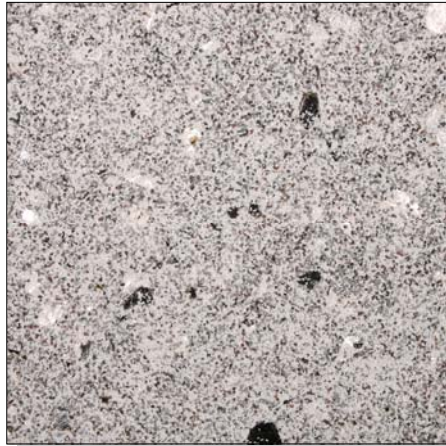


Lumina

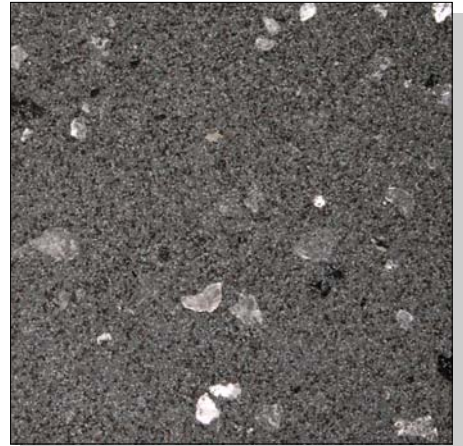
Granite Look Finishes with Sparkling Mica



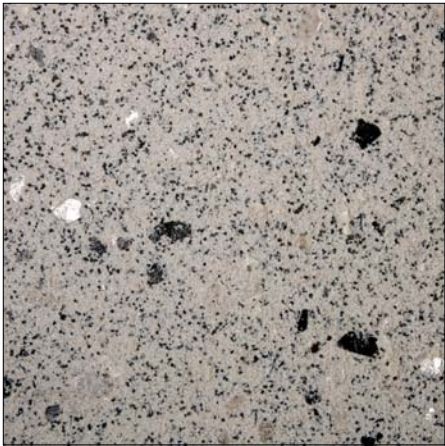
1 Pacific Sand



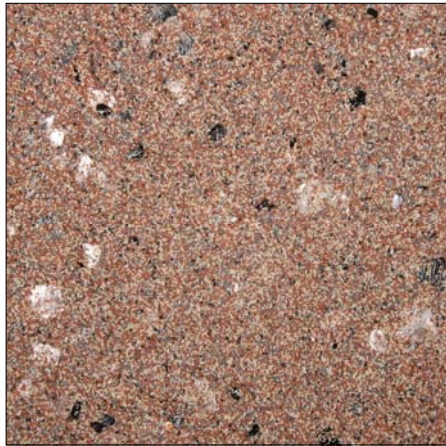
2 Silver Tone



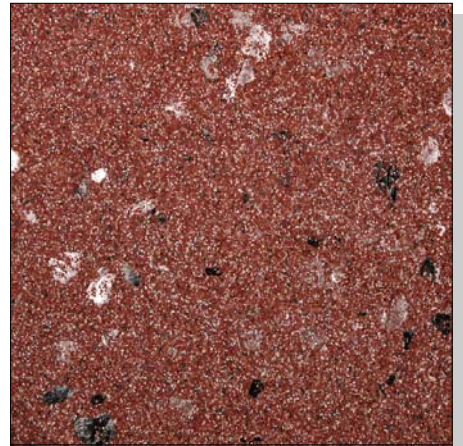
3 Grey Stone



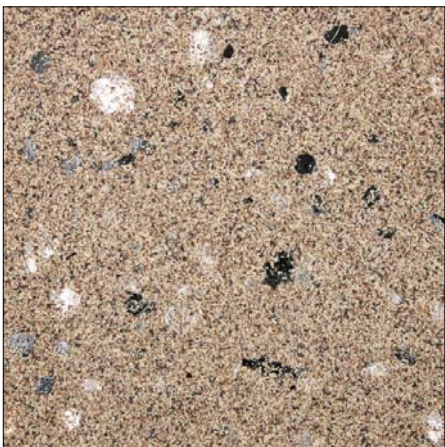
4 Salt & Pepper



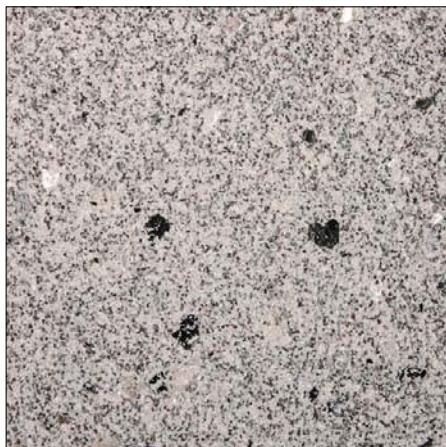
5 Pottery Clay



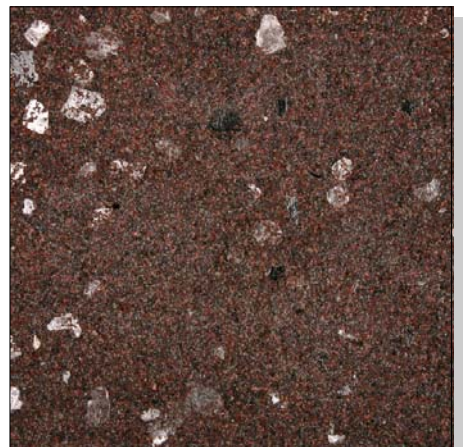
6 Red Rock



7 Saddle Tan



8 Imperial Granite



9 Chocolate Red



Master Wall Inc.
Building a Culture of Excellence



Granite Look Finish

Integrally Colored Stone with Sparkling Mica



Lumia Finishes are used as the final color and texture coat for various Master Wall Systems or interiors. Lumia Finishes is a mix of varied-sized individually colored aggregate with sparkling mica. Lumia is available in five-gallon (19L) pails and is applied over a color-coordinated Primecoat primer.

Approved Substrates

Master Wall Base Coats
Stucco
Prepared & Base Coated Surfaces of:
Brick
Concrete
Masonry
Others approved in writing

Application Procedure

General—Air and substrate temperature for application of *Lumia* must be 50°F (10°C) or higher and must remain 50°F (10°C) or higher for a minimum of 24 hours. Working and drying times are based upon normal room temperature conditions and will vary with temperature and humidity.

Preparation - The substrate must be approved by Master Wall Inc., clean, dry, structurally sound and free of efflorescence, oil, grease, form release agents and curing compounds or anything that would affect bond. Painted surfaces are not acceptable and must be removed. Concrete and surfaces should cure for a minimum of 28 days. Stucco should be cured until clean, dry and hard—typically 14 days.

Interior drywall should be finished and made ready for paint. Prime surfaces with *Sanded Primecoat* primer prior to finishing with *Lumia*.

Base Coats - Must be flat, dry hard, and free of efflorescence. Master Wall base coats must cure a minimum of 12 hours before application of Superior Finish. Substrates of brick, masonry or concrete should be leveled smooth using either Master Wall base coats or stucco.

Mixing—Thoroughly stir the *Lumia Finish* using a heavy duty 1/2" (12.7 mm) drill at 400-500 rpm and a paddle similar to a Wind-lock B-MTW mixer. Small amounts of clean, potable water may be added to obtain a workable consistency up to a maximum of 6 ounces (0.2L) but is not normally required. To avoid color inconsistencies only use product with the same batch numbers for a section or elevation.

Application—Prime the surface with Master Wall *Primecoat* or *Sanded Primecoat* tinted to match the predominate color of stone in the selected *Lumia* color. Allow Primecoat to dry a minimum of 12 hours prior to finish coat application.

Trowel Application—Apply the *Lumia Finish* to the clean, dry and cured base coat with a stainless steel trowel about 1/16" to 1/8" (1.6-3.2 mm) thick. Trowel finish uniformly onto the primed surface. Lightly float with a plastic float eliminate trowel marks and irregularities and expose the mica chips. Clean the float often during this process, making several passes to produce the final texture and appearance.

Clean Up—Tools and equipment can be cleaned with soapy water while the finish coat is still wet.

For Professional Results

Apply finish coats away from direct sunlight.

Surfaces exposed to the weather must be sloped (6:12 minimum).

Finishes are intended for the approved substrates listed above and should not be applied directly to gypsum board or insulation board products except as noted above.

Statistics

Coverage (Estimated/varies)

Per Pail : 85-100 sf (8-9.3 sm)

Pail Weight: 65 lbs (29.5 kg)

Working Time: 1 hour @ room temperature

Drying Time: 8-12 hours to set, 48-72 hours to dry@ room temperature

Application Range: 50°-110°F (10°-43°C)

Shelf Life: 2 years



Information contained in this product data sheet conforms to the standard detail recommendations and specifications for the installation of Master Wall Inc. products and is presented in good faith. Master Wall Inc. assumes no liability, expressed or implied as to the architecture, engineering, or workmanship of any project. This information may be concurrent with, or superseded by other applicable documents, such as specifications and details. Contact Master Wall Inc. for the most current product information.

P. O. Box 397
Fortson, GA 31808
800-755-0825
Technical 800-760-2861
masterwall.com