



LaCantera

Systems

Aggre-flex EIFS
Aggre-flex Drainage EIFS
Commercial Drainage EIFS
Cemplaster Stucco
ICF Coatings
OCS Fiberstucco
QRW1 Drainage EIFS
Rollershield Drainage EIFS
Soffit System
Stucco Cement Board Coatings
Trowelshield Drainage EIFS
Uninsulated Finishes

VOC: <1% by Weight

VOC: 1.4 g/l

Manufacture Locations:

30058 • 77474 • 84651

Packaging: 5 gallon (19L)

pail

Pail Weight: 65 lbs (29.5

kg)

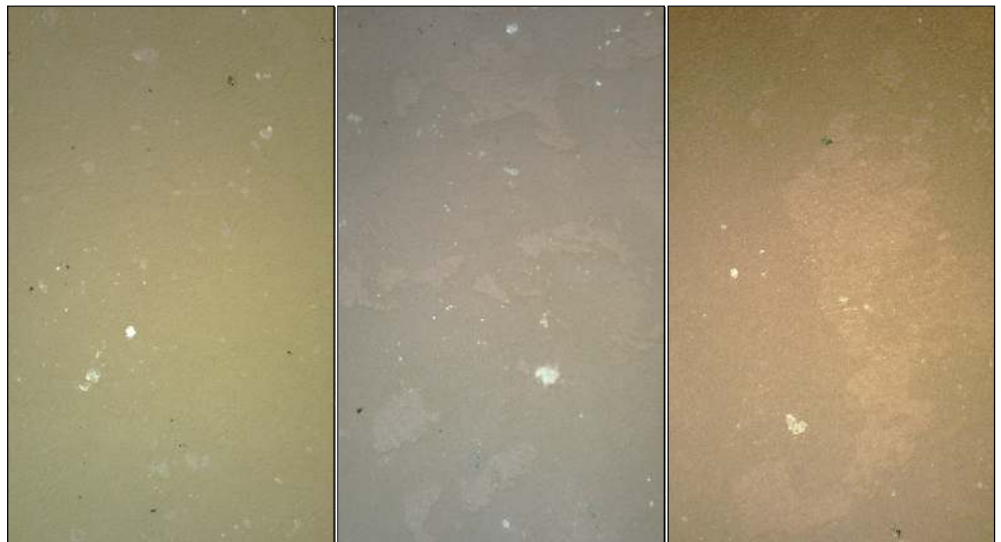
Shelf Life: 2 years

Coverage (estimated)

85-100 sf (8-9.3 sm)

Recreate the look of beautiful Cantera Stone with LaCantera. Sparkling mica aggregate adds highlights to the acrylic finish coat.

- **Available in all standard Master Wall® colors and custom colors**
- **Easily applied**
- **Dirt Pickup Resistant (DPR) Finish**



Product Test Standards

ASTM B 117, ASTM C67 modified/ICBO AC24, ASTM D968, ASTM D2247, ASTM D3273, ASTM E84, ASTM E 96, ASTM E2485 (formerly EIMA 101.01), ASTM G23 (G152 & 153), ASTM G53, ASTM G155 Cycle 1

More Information



masterwall.com



Master Wall Inc.®
Building a Culture of Excellence

masterwall.com

PO Box 397 • Fortson • GA • 31808 • 800-755-0825 • Tech: 800-760-2861



LaCantera

Temp: 50°-110°F (10°-43°C) • Working Time: 1 hr • Set Time: 8-12 hrs • Dry Time: 48-72 hrs
at room temperature, working and drying time will vary with temperature and humidity

Application Procedure

General—Air and substrate temperature for application of LaCantera must be 40°F (5°C) or higher and must remain 40°F (5°C) or higher for a minimum of 24 hours. Working and drying times are based upon normal room temperature conditions and will vary with temperature and humidity.

Preparation - The substrate must be approved by Master Wall Inc.®, clean, dry, structurally sound and free of efflorescence, oil, grease, form release agents and curing compounds or anything that would affect bond. Painted surfaces are not acceptable and must be removed. Concrete and surfaces should cure for a minimum of 28 days. Stucco should be cured until clean, dry and hard—typically 7-14 days.

Interior drywall should be finished and made ready for paint. Prime surfaces with Sanded Primecoat primer prior to finishing with LaCantera.

Base Coats - Must be flat, dry hard, and free of efflorescence. Master Wall® base coats must cure a minimum of 12 hours before application of LaCantera. Substrates of brick, masonry or concrete should be leveled smooth using either Master Wall base coats or stucco.

Mixing—Thoroughly stir the LaCantera Finish using a heavy duty 1/2" (12.7 mm) drill at 400-500 rpm and a paddle similar to a Wind-lock B-MTW mixer. Small amounts of clean, potable water may be added to obtain a workable consistency up to a maximum of 12 ounces (0.4L). To avoid color inconsistencies only use product with the same amount of water and batch numbers for a section or elevation.

Application—Techniques can vary. Apply the LaCantera Finish to the clean, dry and cured base coat or substrate with a stainless steel trowel about 1/16" to 1/8" (1.6-3.2mm) thick. Trowel finish uniformly onto the wall surface. Let take up to a firm set, firm enough that it can be cleaned with a sponge float without removing the finish entirely. Lightly float with a dampened sponge float eliminate trowel marks and irregularities and expose the mica chips. Clean the float often during this process, making several passes to produce the final texture and appearance.

Approved Substrates
Master Wall® Base Coats
Master Wall® Cemplaster
Fiberstucco
Stucco
Prepared & Base Coated
Surfaces of:
Brick
Concrete
Masonry
Primecoat Primed Interior
Drywall
Others approved in writing

Clean Up—Tools and equipment can be cleaned with soapy water while the finish coat is still wet.

For Professional Results
Apply finish coats away from direct sunlight.

Surfaces exposed to the weather must be sloped (6:12 minimum).

Finishes are intended for the listed approved substrates and should not be applied directly to gypsum board or insulation board products except as noted above.

Information contained in this product data sheet conforms to the standard detail recommendations and specifications for the installation of Master Wall Inc.® products and is presented in good faith. Master Wall Inc.® assumes no liability, expressed or implied as to the architecture, engineering, or workmanship of any project. This information may be concurrent with, or superseded by other applicable documents, such as specifications and details. Contact Master Wall Inc.® for the most current product information. ©2015 Master Wall Inc.®



PO Box 397 • Fortson • GA • 31808 • 800-755-0825 • Tech: 800-760-2861