



# Zip Wall System

## Systems

- Aggre-flex Drainage EIFS
  - Grooved Insulation
  - Drainage Mat
- Cemplaster Fiberstucco
- Stucco Cement Board Coatings
- QRW1 Drainage EIFS
  - Drainage Mat

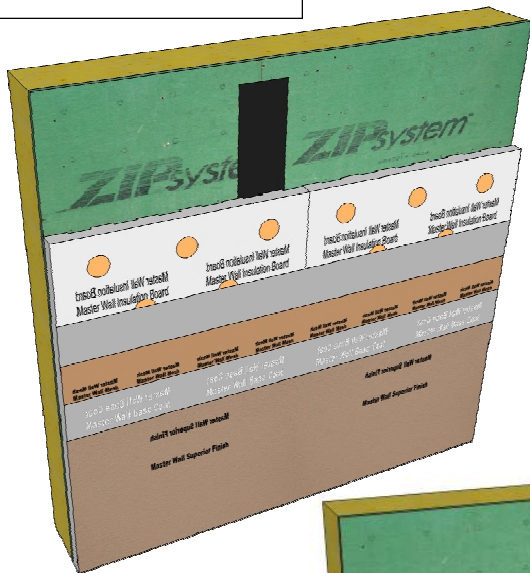
## Attachment Method

- Mechanical

**Master Wall Inc.® recognizes the use of Huber Zip System® and components as an approved substrate under the Master Wall® Systems noted. The Zip System® must be installed in accordance with the manufacturers instructions and code requirements.**

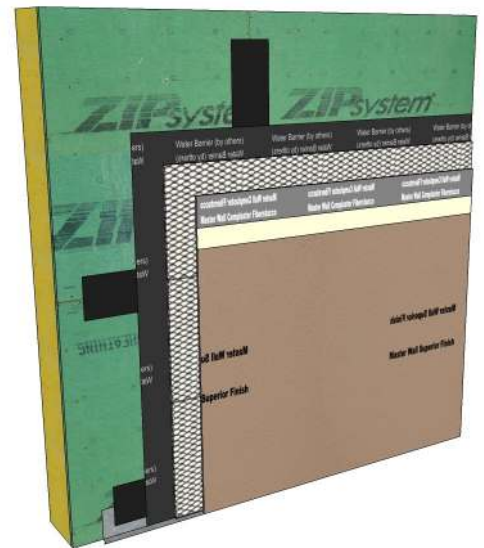
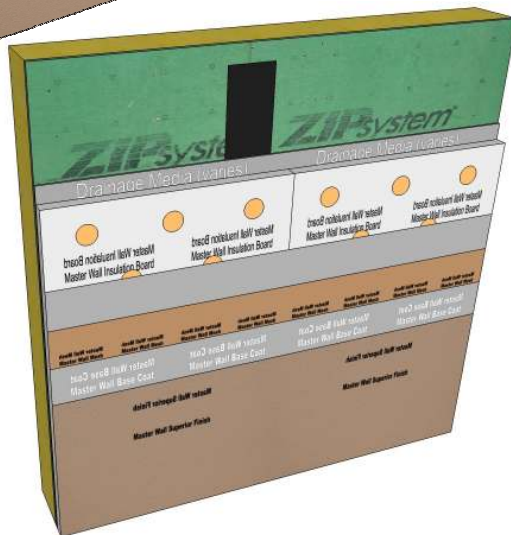
**The Zip System® is unique in that the installation complies as a code-recognized water barrier. For the Cemplaster Fiberstucco System a secondary slip sheet is required.**

**Additional information can be found at [www.huberwood.com](http://www.huberwood.com)**



**Top: Aggre-flex Drainage EIFS with grooved insulation board**

**Bottom: Aggre-flex Drainage EIFS with Drainage Mat**



**Above: Cemplaster Fiberstucco over slip sheet. Drainage Mat/slip sheet is optional**

**We finish strong.**

Information contained in this product data sheet conforms to the standard detail recommendations and specifications for the installation of Master Wall Inc.® products and is presented in good faith. Master Wall Inc.® assumes no liability, expressed or implied as to the architecture, engineering, or workmanship of any project. This information may be concurrent with, or superseded by other applicable documents, such as specifications and details. Contact Master Wall Inc.® for the most current product information. ©2017 Master Wall Inc.®



[masterwall.com](http://masterwall.com)

**PO Box 397 • Fortson • GA • 31808 • 800-755-0825 • Tech: 800-760-2861**