



Submittal Package

Superior Finishes over Stucco

Project:

Location:

Architect:

General Contractor:

Applicator:

Benefits of Master Wall

- American owned and privately managed, our focus is the customer
- 20+ year track record, projects from coast to coast
- Quality products featuring 100% pure acrylic polymers
- Dedicated to the EIFS & Stucco Markets, it's **what** we do, not part of what our company does
- Experienced Staff—100+ years of experience
- Service—we provide it!
 - Job site visits
 - Color matching
 - Architectural Support
 - Samples
 - Plan, detail and technical reviews
- Dedicated to a culture of excellence

More Information



Superior Finishes over
Stucco

Submittal Information:

- *System Data Sheets*
- *Product Data Sheets*
- *Specifications*
- *Details*
- *Sample Labor/Material Limited Warranty*

Manufactured by



P. O. Box 397
Fortson, GA 31808
800-755-0825
Technical 800-760-2861
www.masterwall.com



Superior Finishes over Stucco

Textured Acrylic Finish System

09 25 13

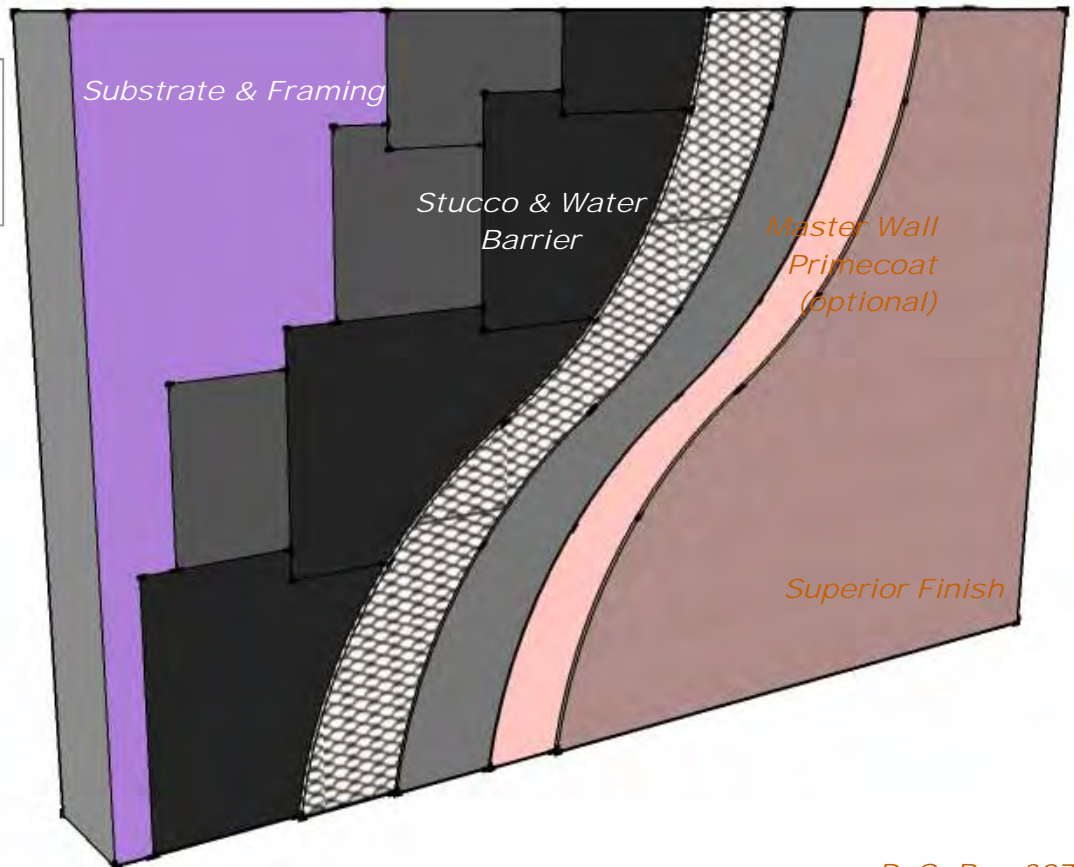
Superior Finishes applied over a traditional stucco base make projects look better. Our finishes offer better color and texture consistency compared to traditional cement textures. We suggest a Primecoat primer for even better color consistency.

To bridge minor hairline cracks in stucco specify Superior Elastomeric Plus Finish. The textured finish is designed to stretch with the minor hairline cracking common in stucco.

Features & Benefits

- Better Color Consistency
- Easy Application
- Works over all traditional stuccos

System Uses



©2011 Master Wall Inc.

P. O. Box 397
 Fortson, GA 31808
 800-755-0825
 Technical 800-760-2861
 masterwall.com

050111

Finishes over Stucco Short Form Specification

09 25 13



1.0 General

This is a short form specification. Refer to product data sheets for additional information.

1.1 System Description

Master Wall Finishes over Stucco consists of an optional primer and a textured finish.

1.2 Design Requirements:

- A. Reference architectural drawings for specific detail requirements.
- B. Slope all surfaces a minimum of 1:2 (6" in 12") to shed water, maximum 12" (305mm) wide.
- C. Maximum deflection of substrates shall not exceed L/360.
- D. Acceptable substrates include Portland cement plaster (stucco). Contact Master Wall for other approved substrates.

1.3 Quality Assurance

- A. The coatings shall be tested for: Accelerated weathering, mildew resistance, salt spray resistance and structural performance.
- B. The coatings shall have been tested for fire performance in accordance with ASTM E-84.

1.4 Job Conditions

- A. Store all materials protected from weather and direct sunlight at temperatures above 40°F (5°C).
- B. The ambient and wall temperature shall be a minimum of 40°F (5°C) and shall remain so for at least 24 hours after installation.

2.0 Products

All components of the Finish over Stucco shall be manufactured by Master Wall and supplied by an authorized distributor.

- A. Superior, Superior Elastomeric or Superior Elastomeric Plus Finish: 100% pure acrylic formulation with integral color and texture. Perfect, Spray, Desert Sand, R-Coarse and Refinish textures.
- B. Master Wall Coatings:
 1. Primecoat: A water-based primer.
 2. Sanded Primecoat: Sanded water-based primer.
 3. Roller-flex: A water-based architectural finish coating.

3.0 Installation

- A. Inspect the substrate to ensure that it is free of all foreign materials that would affect the adhesion of the Master Wall Finishes over Stucco.
- B. Apply the products in strict accordance with Master Wall product data sheets, architectural drawings and architectural specifications.

See full specifications and
details at masterwall.com

SUPERIOR *finishes*

Integrally Colored Textured Acrylic Finishes



Perfect Texture



Spray Texture



Desert Sand Texture



R-Coarse Texture



Refinish Texture



M Master Wall Inc.
Building a Culture of Excellence



Superior Finish is Master Wall's textured finish line. Available in standard or custom colors, Superior Finishes may be applied over Master Wall Base Coats or prepared substrates including brick, masonry, concrete and stucco. Superior Finishes work great for interior applications as well. Superior Finish is available in five-gallon (19L) pails and is typically troweled onto the wall surface with a stainless steel trowel.

Estimated Coverage

Perfect: 120-150 sf/pail (11-14 sm)
 Spray SS: 215-225 sf/pail (20-21 sm)
 Desert Sand SS: 130-150 sf/pail (12-14 sm)
 R-Coarse: 90-120 sf/pail (8.4-11 sm)
 Perfect West: 140-160 sf/pail (13-15 sm)
 Refinish: Varies with Texture

Coverage will vary by application, applicator skill and substrate conditions. Master Wall assumes no responsibility nor liability for coverage.

Finish Properties

Meets or Exceeds:
 ASTM E84 Surface Burning
 ASTM E108 Flame Spread
 ASTM C67 Freeze/Thaw
 ASTM E2485/2570 Freeze/Thaw
 ASTM D2247/E2570 Humidity
 ASTM D3273 Mold/Mildew
 ASTM D968 Abrasion
 ASTM B117 Salt Spray
 ASTM G53 Weathering
 ASTM G23/G154/G155 Weathering

Approved Substrates

Master Wall Base Coats
 Stucco
 Prepared & Base Coated Surfaces of:
 Brick
 Concrete
 Masonry
 Others approved in writing

Statistics

Pail Weight: 70 lbs (32 kg), Refinish 65 lbs (29.5 kg)

Working Time: 1/4 hour @ room temperature

Drying Time: 8-12 hours to set, 48-72 hours to dry @ room temperature. High pigment levels, low temperatures, high humidity extend dry times.

Application Range: 40°-110°F (5°-43°C)

Shelf Life: 2 years

Application Procedure

Job Conditions - Air and substrate temperature for application of *Superior Finishes* must be 40°F (5°C) or higher and must remain 40°F (5°C) or higher for a minimum of 24 hours. Provide temporary protection to protect the wall system from damage until permanent flashings, caps and sealants are installed. Store materials within prescribed temperature limits and out of direct sunlight. High temperatures will reduce working times, Low temperatures and/or high humidity will extend working, set and dry times.

Preparation - The substrate must be approved by Master Wall Inc., clean, dry, structurally sound and free of efflorescence, oil, grease, form release agents and curing compounds or anything that would affect bond. Painted surfaces are not acceptable and must be removed. Concrete and surfaces should cure for a minimum of 28 days. Stucco should be cured until clean, dry and hard—typically 14 days.

Interior drywall should be finished and made ready for paint. Prime surfaces with *Primecoat/Sanded Primecoat* primer prior to finishing.

Base Coats - Must be flat, dry hard, and free of efflorescence. Master Wall base coats must cure a minimum of 12 hours before application of Superior Finish. Substrates of brick, masonry or concrete should be leveled smooth using either Master Wall base coats or stucco.

Mixing - Thoroughly stir *Superior Finish* using a heavy duty 1/2" drill at 400 - 500 rpm and a heavy duty mixing paddle. Small amounts of clean, potable water may be added to obtain a workable consistency. To avoid color variations, add the same amount of water to each pail. Do not exceed 24 ounces (0.7L) of water per pail of finish.

Application — Apply a uniform thickness (about 1/16") of *Superior Finish* to the substrate using a stainless steel trowel. Spread evenly and then scrape the finish coat down to a thickness no greater than the largest aggregate in the material. Immediately float the finish coat using a plastic float to the desired texture. Always maintain a wet edge to achieve uniformity of texture and color.

For Professional Results

- Apply finish coats away from direct sunlight. Cold joints or color variations can occur if the finish dries too quickly.

- Consider priming stucco surfaces with *Primecoat/Sanded Primecoat* to even out finish absorption.
- Surfaces exposed to the weather must be sloped (6:12 minimum).
- Under certain conditions dark colors may show efflorescence on the surface during the cure process.
- Finishes are intended for the approved substrates listed above and should not be applied directly to gypsum board or insulation board products.

Clean Up—Tools and equipment can be cleaned with soapy water while the *Superior Finish* is still wet.

Available Options



Elastomeric Additive



Silicone Additive



Excel Mildew Additive



Master Wall Inc.
Building a Culture of Excellence

P. O. Box 397
 Fortson, GA 31808

800-755-0825

Technical 800-760-2861

masterwall.com

050111

Information contained in this product data sheet conforms to the standard detail recommendations and specifications for the installation of Master Wall Inc. products and is presented in good faith. Master Wall Inc. assumes no liability, expressed or implied as to the architecture, engineering, or workmanship of any project. This information may be concurrent with, or superseded by other applicable documents, such as specifications and details. Contact Master Wall Inc. for the most current product information.



Traditional stucco is a durable wall cladding. Master Wall finishes improve the looks of stucco with bold textures and colors

This guideline specification is intended for use by the design/construction professional and any user of Master Wall products to assist in developing project specifications and to provide guidance on the application of the Master Wall Stucco System (MASTER WALL FINISHES) to sound supporting construction. Besides different supporting structures, the professional may choose several options:

PART 1 GENERAL

1.01 SECTION INCLUDES

- A. Materials and installation of Master Wall finishes over stucco.

1.02 REFERENCED DOCUMENTS

- A. ASTM Standards:

1. C 847 Standard Specification for Metal Lath
2. C 897 Aggregates for Job Mixed Portland Cement-Based Plaster
3. C 926 Standard Specification for Application of Portland cement-Based Plaster
4. C 1032 Standard Specification for Woven Wire Plaster Base
5. C 1063 Installation of Lathing and furring for Portland Cement-Based Plaster

1.03 TERMS/DEFINITIONS

- A. Stucco – traditional stucco mix and application (by others), mixed and applied in accordance with the reference documents, above.
- B. Accessories/Trims – The closure trims, control joints metal reinforcement and mechanical fasteners used in the installation of stucco.
- C. Applicator – The contractor that applies the finishes.
- D. Building Expansion Joint – A joint through the entire building structure designed to accommodate structural movement.
- E. Control Joint – a joint in the stucco wall designed to reduce and control thermal and shrinkage cracking.
- F. Elastomeric – Factory mixed acrylic designed to bridge minor cracking in stucco.
- G. Designer – The person or firm that is responsible to create the plans and specifications for the entire project.
- H. Finish Coat – An acrylic based, factory mixed decorative and protective coating that is applied to the base coat.
- I. Insulation Board – Molded Expanded Polystyrene Board, manufactured in accordance with the EIFS manufacturer's specifications, attached to the substrate and covered with the reinforced base coat and finish.



1.04 DESIGN REQUIREMENTS

- A. Stucco Substrates
 - 1. Provide surface plane tolerance not to exceed ¼ inch in 10 feet (6.4 mm in 3.05 m).
 - 2. Deflection shall be limited to L/360.

1.05 SUBMITTALS

- A. The Applicator shall submit a list of completed projects of like size and complexity.
- B. The Applicator shall submit a certificate of training indicating that they have been given instructions on the proper installation of the Master Wall Finishes.
- C. The Applicator shall submit Manufacturer's current literature, brochures, specifications, and details.
- D. The Applicator shall submit sufficient samples of each finish texture and color selected. The samples shall be prepared with the same tools and techniques required for the actual project. Color and texture should be approved based on the job site mock-up samples.
- E. The Applicator shall provide any shop drawings that may be applicable to the project for approval by the project architect.

1.06 DELIVERY, STORAGE AND HANDLING

- A. Deliver all materials in original unopened packages with labels intact. Verify all quantities, colors, and textures against bill of lading.
- B. Store all materials protected from direct exposure to weather conditions and at temperatures not less than 40° F (5° C) or greater than 110° F (43° C).
- C. Material safety data sheets (MSDS) shall be supplied for the components of the MASTER WALL FINISHES and be available at the job site.

1.07 JOB CONDITIONS

- A. Ambient air temperatures shall be 40° F (5° C) or greater and rising at the time of installation of the Master Wall Inc. products and shall remain at 40° F (5° C) or greater for at least 24 hours after application.
- B. Provide supplemental heat and protection as required when the temperature and conditions are not in accordance with installation requirements. Sufficient ventilation and time shall be provided to ensure that materials have sufficiently dried prior to removing supplemental heat.
- C. Adequate protection shall be provided to prevent weather conditions (humidity, temperature, and precipitation) from having an affect on the curing or drying time of **Master Wall Inc.** materials.
- D. Adjacent materials and the Master Wall Finishes shall be protected during installation and while curing from weather and shall be protected from site damage.
- E. Coordinate installation of the Master Wall Finishes with related work specified in other sections to ensure that the wall assembly is protected to prevent water from getting behind the system. The cap flashing shall be installed as soon as possible after the finish coat has been applied. When this is not possible, temporary protection shall be provided immediately in this area.



- F. All sealants shall be installed in a timely manner. Protect open joints from water intrusion during construction with backer rod, or temporary covering, until permanently sealed.
- G. Sufficient manpower and equipment shall be employed to ensure a continuous operation, free of cold joints, scaffolding lines, and texture variations, etc.
- H. Stucco substrates shall be allowed to cure long enough to support the finish work.

1.08 LIMITED MATERIALS WARRANTY

- A. A Limited Materials Warranty shall be issued upon the receipt of a properly completed warranty request form.

PART 2 PRODUCTS

2.01 MANUFACTURERS

- A. **Master Wall Inc.**

2.02 PRIMER (optional)

- A. **Master Wall Primecoat:** acrylic-based tinted primer.
(Note: priming equalizes substrate absorption for a better-looking project)

2.03 FINISH COAT

- A. **Superior Finish:** Master Wall Inc.'s Superior Finishes are acrylic-based wall coatings available in a variety of colors and textures. The following textures are available:
 - 1. Perfect - riled texture
 - 2. Spray – sand type texture
 - 3. R-Coarse – coarse riled texture
 - 4. Desert Sand – coarse sand texture
 - 5. Refinish – Fine texture used to create numerous finishes
 - 6. Superior Stone & Aggrestone Finishes – clear acrylic matrix filled with colored ceramic beads
- A. **Superior Elastomeric Finish:** Master Wall Inc.'s Superior Finishes using elastomeric polymers to bridge minor cracking. The following textures are available:
 - 1. Perfect - riled texture
 - 2. Spray – sand type texture
 - 3. R-Coarse – coarse riled texture
 - 4. Desert Sand – coarse sand texture
 - 5. Refinish – Fine texture used to create numerous finishes

(Note: The above textures excluding Superior Stone & Aggrestone Finishes are also available in the Aggre-flex Superior Silicone Coat product line. Aggre-flex Superior Silicone Coat combines acrylic and the siloxane polymers to provide the maximum resistance to moisture.)



2.04 JOB MIXED INGREDIENTS

- A. Water: Clear, clean and potable without any foreign matter in the solution that may affect the color and setting qualities of the cement, adhesive, base or finish coat.

2.05 MIXING

- A. **Superior Finishes:** Mix the finish coat with a Wind-lock B-MTW using a ½", 400-500 RPM drill motor. Small amounts of water can be added for workability. Mix until reaching a uniform consistency. (It is important that the same amount of water be added to each pail to ensure a consistent color.)
- B. Additives shall not be added to Master Wall Inc.'s materials unless written approval has been received from Master Wall Inc.
- C. Mix only as much material as can readily be used.
- D. Do not use anti-freeze compounds or other additives.

PART 3 EXECUTION

3.01 EXAMINATION

- A. Prior to installation of the Finishes over Stucco, the contractor shall verify that the substrate:
1. Is of a type listed in Section 1.04.C.1.
 2. Is flat within 6.4 mm (1/4 in) in a 3.05 m (10 ft) radius.
 3. Is sound, dry, connections are tight, has no surface voids, projections or other conditions that may interfere with the Finishes over Stucco installation or performance.
- B. Prior to the installation of the Finishes over Stucco, the architect or general contractor shall insure that all needed flashings and other waterproofing details have been completed, if such completion is required prior to the finish application. Additionally, the Contractor shall ensure that:
1. Metal roof flashing has been installed in accordance with Asphalt Roofing Manufacturers Association (ARMA) Standards.
 2. Openings are flashed as necessary to prevent water penetration.
 3. Chimneys, Balconies, and Decks have been properly flashed.
 4. Windows, Doors, etc. are installed and flashed per manufacturer's requirements.
- C. Prior to the installation of the Finishes over Stucco, the contractor shall notify the general contractor, and/or architect, and/or owner of all discrepancies.

3.02 PREPARATION

- A. The finish materials shall be protected by permanent or temporary means from inclement weather and other sources of damage prior to, during, and following application until completely dry.
- B. Protect adjoining work and property during finish installation.
- C. The substrate shall be prepared as to be free of foreign materials, such as, oil, dust, dirt, form release agents, efflorescence, paint, wax, water repellents, moisture, frost and any other condition that inhibit adhesion.



3.03 INSTALLATION

- A. The system shall be installed in accordance with the current Master Wall Inc. Finishes over Stucco Application Instructions.
- B. The overall minimum base coat thickness shall be sufficient to fully embed the mesh.
- C. Sealant shall not be applied directly to textured finishes.
- D. When installing the Finishes over Stucco, adhere according to Master Wall Inc. and local requirements.
- E. High impact meshes shall be installed as specified at ground level, high traffic areas and other areas exposed to or susceptible to impact damage.

3.04 FIELD QUALITY CONTROL

- A. The contractor shall be responsible for the proper application of the finish materials.
- B. Master Wall Inc. assumes no responsibility for on-site inspections or application of its products.
- C. If required, the contractor shall certify in writing the quality of work performed relative to the substrate system, details, installation procedures, workmanship and as to the specific products used.
- D. If required, the sealant contractor shall certify in writing that the sealant application is in accordance with the sealant manufacturer's and Master Wall Inc.'s recommendations.

3.05 CLEANING

- A. All excess Finishes over Stucco materials shall be removed from the job site by the contractor in accordance with contract provisions and as required by applicable law.
- B. All surrounding areas, where the Finishes over Stucco has been installed, shall be left free of debris and foreign substances resulting from the contractor's work.

3.06 PROTECTION

- A. The Finishes over Stucco shall be protected from inclement weather and other sources of damage until dry and permanent protection in the form of flashings, sealants, etc. are installed.

Disclaimer

This Specification is published for general informational purposes only and is not intended to imply that these are the only materials, procedures, or methods, which are available or suitable. Materials, procedures, or methods may vary according to the particular circumstances, local building code requirements, design conditions, or statutory and regulatory requirements. While the information in this specification is believed to be accurate and reliable, it is presented without guarantee or responsibility on the part of Master Wall Inc.

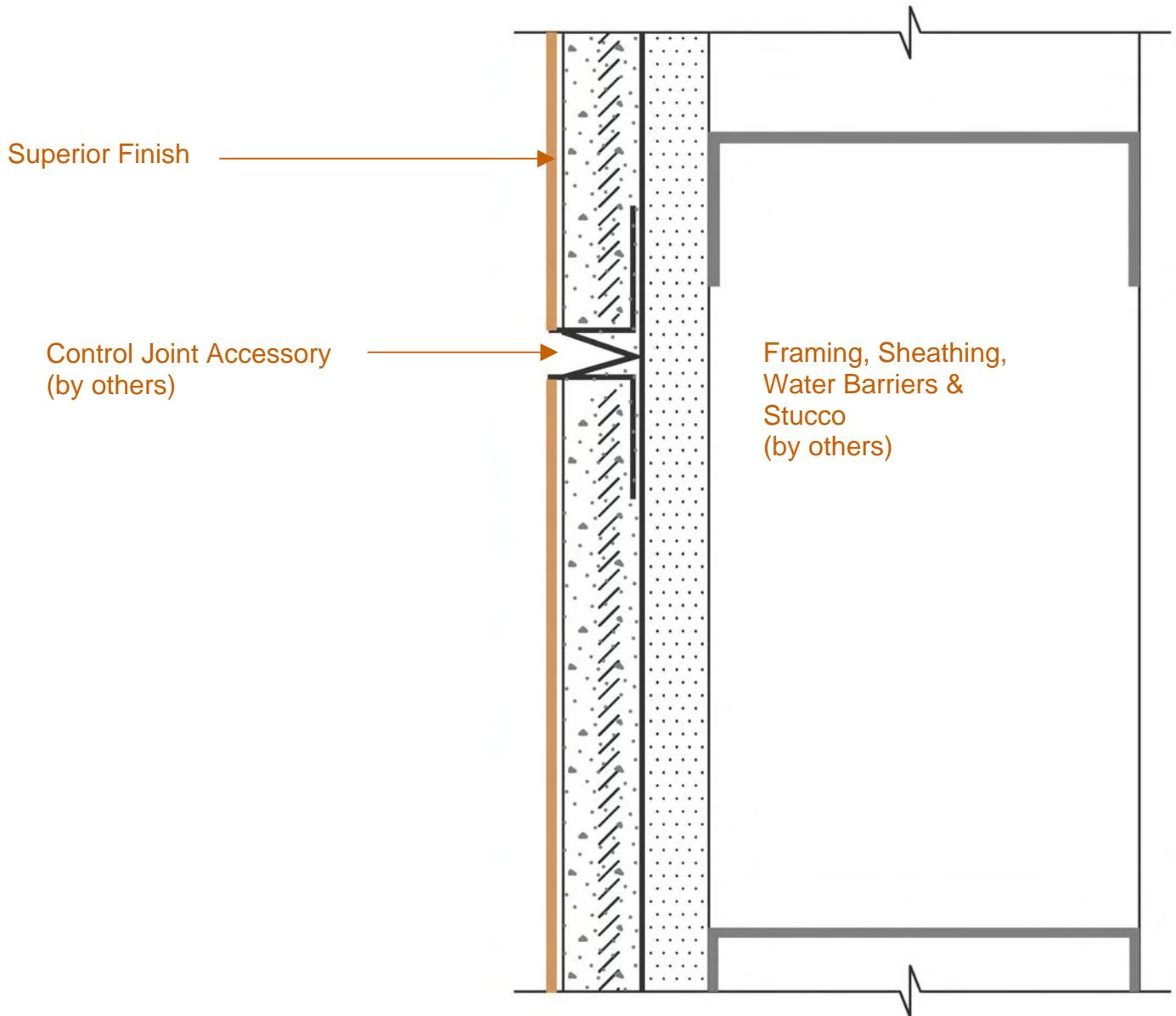


Superior Finishes over Stucco

Conceptual Details

Corporate • P.O. Box 397 • Fortson • Georgia • 31808 • 800-755-0825 • FAX 706-569-6704

Technical • 800-760-2861 • FAX 734-433-0930



FIN-01 Cross-Section

These drawings relay the conceptual conditions of Master Wall Systems and are not the construction drawings. Ultimately the design and detailing of an entire wall system is the responsibility of a professional. These details will guide the design professional in the use of Master Wall Products. Master Wall disclaims design, warranty or construction intent or responsibility.

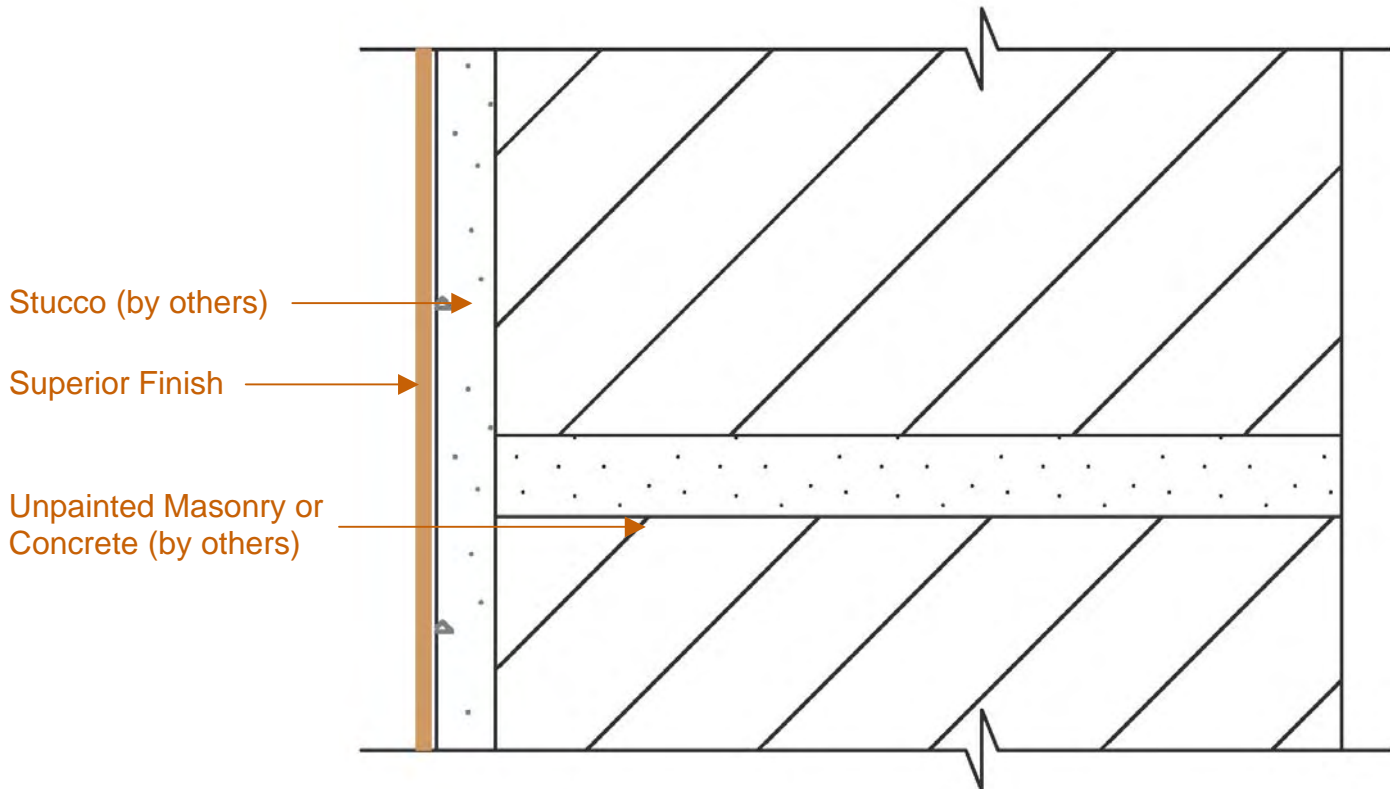


Superior Finishes over Stucco

Conceptual Details

Corporate • P.O. Box 397 • Fortson • Georgia • 31808 • 800-755-0825 • FAX 706-569-6704

Technical • 800-760-2861 • FAX 734-433-0930



FIN-02 Cross-Section

These drawings relay the conceptual conditions of Master Wall Systems and are not the construction drawings. Ultimately the design and detailing of an entire wall system is the responsibility of a professional. These details will guide the design professional in the use of Master Wall Products. Master Wall disclaims design, warranty or construction intent or responsibility.

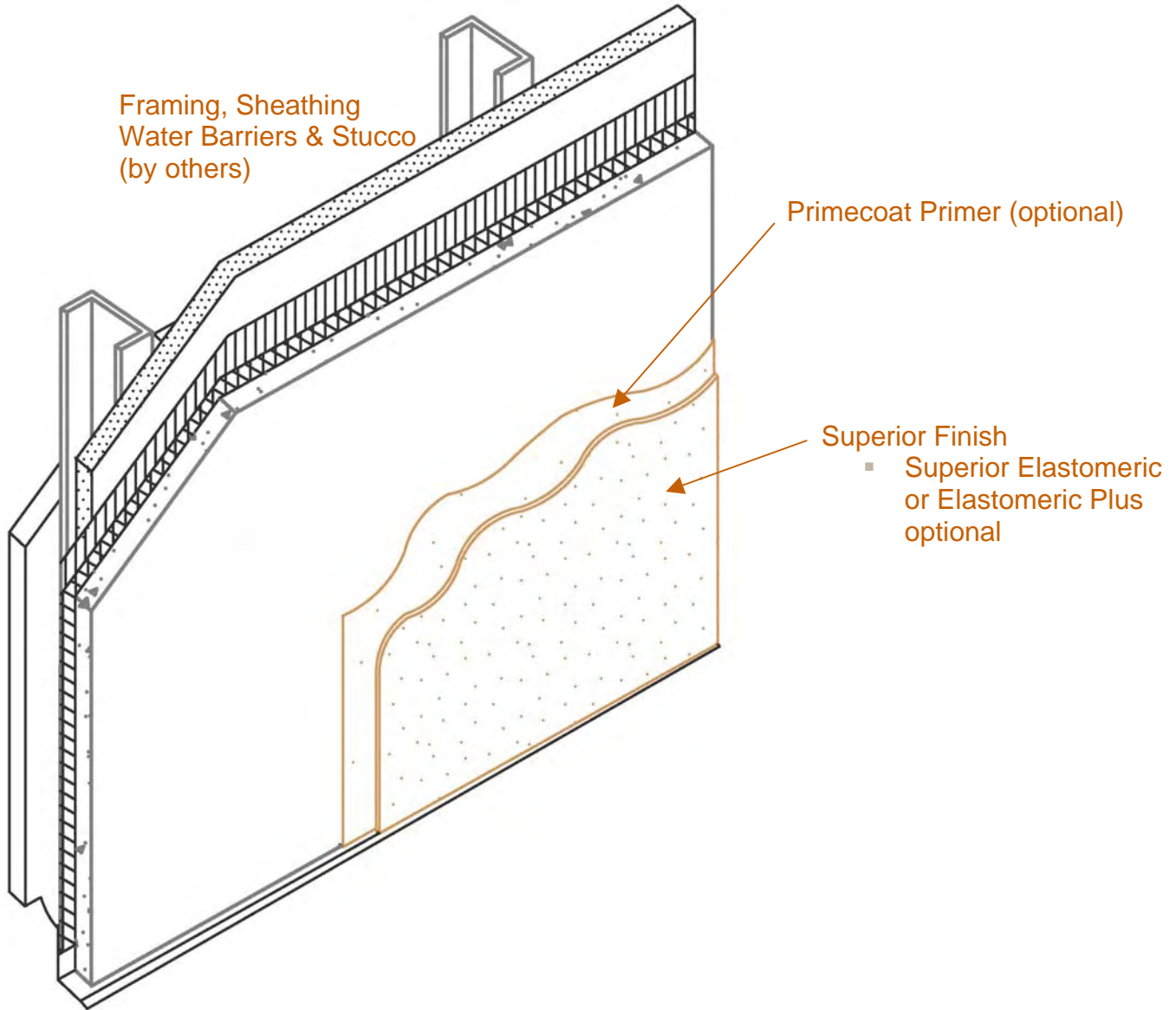


Superior Finishes over Stucco

Conceptual Details

Corporate • P.O. Box 397 • Fortson • Georgia • 31808 • 800-755-0825 • FAX 706-569-6704

Technical • 800-760-2861 • FAX 734-433-0930



FIN-03 Cross-Section Isometric

These drawings relay the conceptual conditions of Master Wall Systems and are not the construction drawings. Ultimately the design and detailing of an entire wall system is the responsibility of a professional. These details will guide the design professional in the use of Master Wall Products. Master Wall disclaims design, warranty or construction intent or responsibility.



Superior Finishes over Stucco

1 Year Labor & Material Limited Warranty

Master Wall Inc. warrants the properly designed and installed Superior Finishes and materials for 1 year from the date of installation. Master Wall Inc.'s exclusive liability under this warranty is to supply replacement materials and labor or corrective procedures, if it is shown that the materials supplied by Master Wall Inc., were defective when installed by the Master Wall Inc. certified applicator. Remedies shall be solely determined by Master Wall Inc. and no other warranties are expressed or implied. For a valid warranty, the system and products must be installed in accordance with Master Wall Inc.'s written recommendations, specifications, details, bulletins and other project-specific written recommendations. Master Wall Inc. must be notified in writing within 10 business days of the original discovery of the defect.

Master Wall Inc., is not responsible for structural conditions, design conditions beyond those noted in our literature, architecture, engineering or workmanship of any project. Stucco and direct-applied coatings/systems may have hairline cracks, spalling, fastener popping or efflorescence, which are not considered product defects. Materials must be properly stored and applied in a timely manner. Workmanship, aesthetics and installation are beyond the scope of this warranty as are any deviations from Master Wall Inc. Documents not specifically approved in writing.

Abuse, misuse, excessive weather or environmental conditions beyond what the products or systems have been tested, designed or approved for is expressly limited. Certain colors with organic pigments are less fade-resistant than others. The building, system and products must be properly maintained in accordance with Master Wall Inc., documents, local environmental conditions and good building practices. In no case is Master Wall Inc. responsible for incidental and consequential damages.

This warranty becomes effective only when all bills for the components of the system have been paid.

Except as stated, Master Wall, Inc., expressly disclaims any warranty of merchantability or fitness for a particular purpose. The above remedies are to be deemed exclusive.

Project:

Applicator:

Warranty Date: