



# Superior Finishes over Stucco

Textured Acrylic Finish System

09 25 13

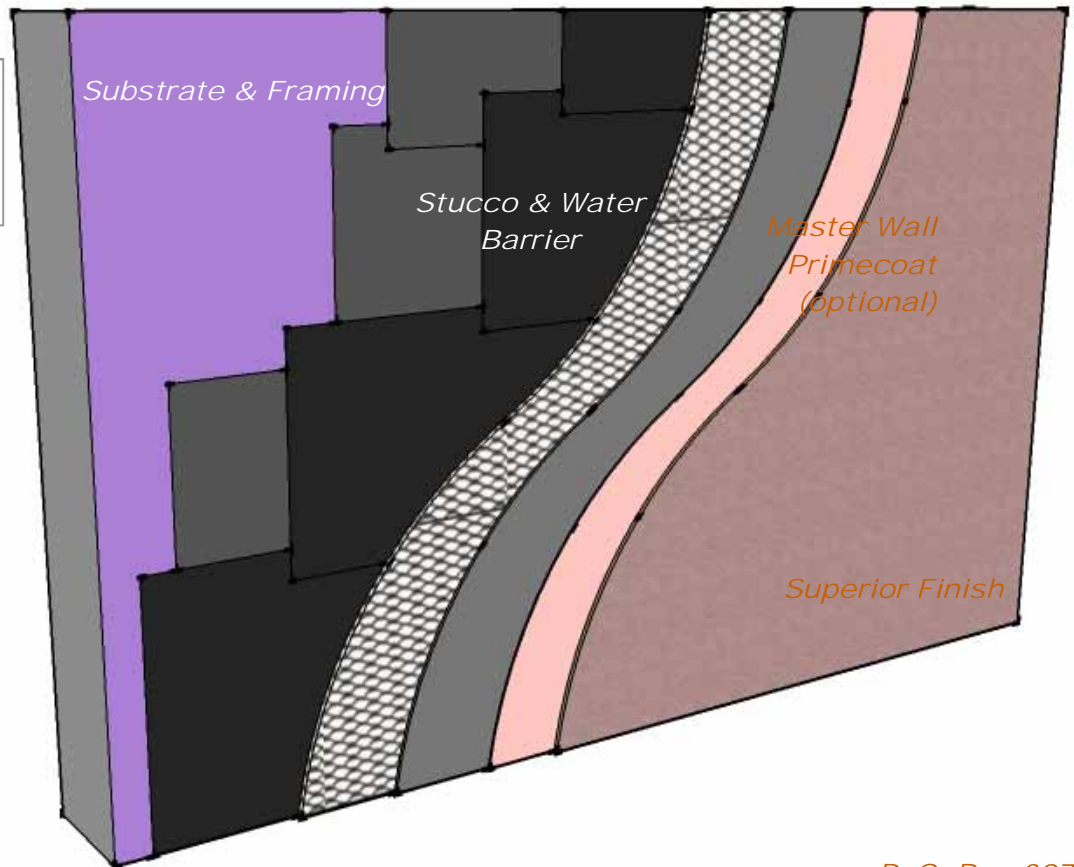
*Superior Finishes applied over a traditional stucco base make projects look better. Our finishes offer better color and texture consistency compared to traditional cement textures. We suggest a Primecoat primer for even better color consistency.*

*To bridge minor hairline cracks in stucco specify Superior Elastomeric Plus Finish. The textured finish is designed to stretch with the minor hairline cracking common in stucco.*

## Features & Benefits

- *Better Color Consistency*
- *Easy Application*
- *Works over all traditional stuccos*

### System Uses



©2011 Master Wall Inc.

P. O. Box 397  
 Fortson, GA 31808  
 800-755-0825  
 Technical 800-760-2861  
 masterwall.com

050111

### 1.0 General

This is a short form specification. Refer to product data sheets for additional information.

#### 1.1 System Description

Master Wall Finishes over Stucco consists of an optional primer and a textured finish.

#### 1.2 Design Requirements:

- A. Reference architectural drawings for specific detail requirements.
- B. Slope all surfaces a minimum of 1:2 (6" in 12") to shed water, maximum 12" (305mm) wide.
- C. Maximum deflection of substrates shall not exceed L/360.
- D. Acceptable substrates include Portland cement plaster (stucco). Contact Master Wall for other approved substrates.

#### 1.3 Quality Assurance

- A. The coatings shall be tested for: Accelerated weathering, mildew resistance, salt spray resistance and structural performance.
- B. The coatings shall have been tested for fire performance in accordance with ASTM E-84.

#### 1.4 Job Conditions

- A. Store all materials protected from weather and direct sunlight at temperatures above 40°F (5°C).
- B. The ambient and wall temperature shall be a minimum of 40°F (5°C) and shall remain so for at least 24 hours after installation.

### 2.0 Products

All components of the Finish over Stucco shall be manufactured by Master Wall and supplied by an authorized distributor.

- A. Superior, Superior Elastomeric or Superior Elastomeric Plus Finish: 100% pure acrylic formulation with integral color and texture. Perfect, Spray, Desert Sand, R-Coarse and Refinish textures.
- B. Master Wall Coatings:
  1. Primecoat: A water-based primer.
  2. Sanded Primecoat: Sanded water-based primer.
  3. Roller-flex: A water-based architectural finish coating.

### 3.0 Installation

- A. Inspect the substrate to ensure that it is free of all foreign materials that would affect the adhesion of the Master Wall Finishes over Stucco.
- B. Apply the products in strict accordance with Master Wall product data sheets, architectural drawings and architectural specifications.

See full specifications and  
details at [masterwall.com](http://masterwall.com)

More Information



Superior Finishes over  
Stucco