



07 24 13/07 24 19

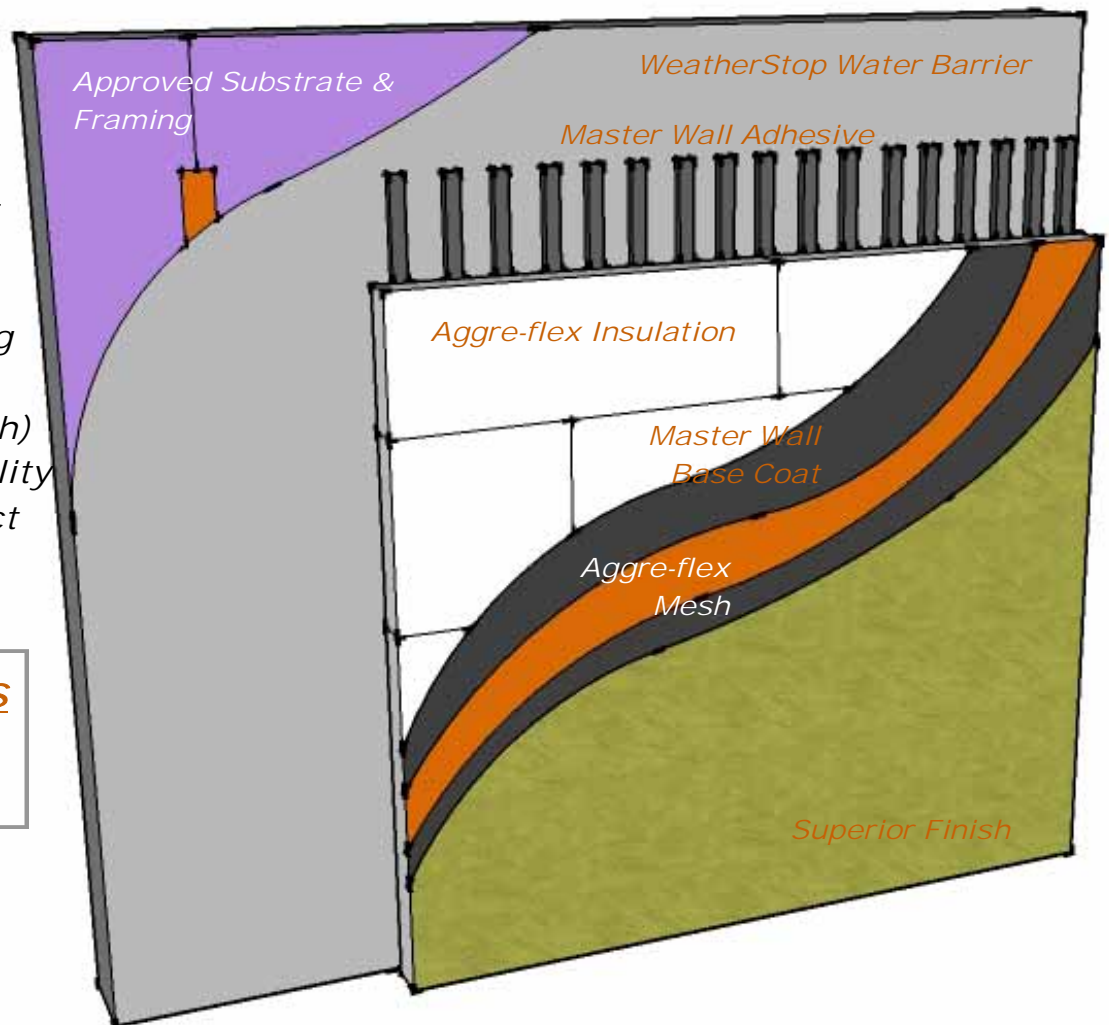
Commercial Drainage EIFS

Drainage Type Exterior Insulation and Finish System

Master Wall's Aggre-flex Commercial Drainage EIFS is a polymer-based (Class PB) Exterior Insulation and Finish System (EIFS) with a trowel-applied water barrier. The system is applied with vertical drainage channels that help drain any incidental water entering the system and uses WeatherStop Flashing Tape at openings and penetrations.

Features & Benefits

- 97% Drainage Efficiency
- Heavy, trowel-applied water barrier
- High Insulating Value (R-4 per inch)
- Design Flexibility
- Medium Impact Resistance is standard



System Uses



©2011 Master Wall Inc.

P. O. Box 397
Fortson, GA 31808
800-755-0825
Technical 800-760-2861
masterwall.com

050111

Aggre-flex Commercial Drainage Short Form Specification

07 24 13 / 07 24 19



1.0 General

This is a short form specification. Refer to *Aggre-flex Commercial Drainage* specifications and details for additional information.

1.1 System Description

The Master Wall *Aggre-flex Commercial Drainage* Exterior Insulation and Finish System (EIFS) is a Class PB (Polymer Based) EIF System consisting of a trowel-applied water barrier, adhesive attachment, insulation board, reinforcing mesh and a textured finish.

1.2 Design Requirements:

- A. Reference Master Wall suggested details and architectural drawings for specific detail requirements.
- B. Slope all surfaces a minimum of 1:2 (6" in 12") to shed water, maximum 12" (305mm) wide.
- C. Maximum deflection of substrates shall not exceed L/240.
- D. Typical acceptable substrates include unpainted brick, masonry, concrete, Dens Glass Gold® (ASTM C-1177). Contact Master Wall for other approved substrates.
- E. Expansion joints are required at building expansion joints, panel joints, floor lines in wood framed construction, and other areas where significant movement occurs.

1.3 Quality Assurance

- A. The system shall be tested for: Accelerated weathering, mildew resistance, salt spray resistance and structural performance.
- B. The system shall have been tested for fire performance in accordance with ASTM E-108, ASTM E-84, UBC 26-9, and Radiant Heat.
- C. The system shall have been tested for water resistance in accordance with ASTM E-331.

1.4 Job Conditions

- A. Store all materials protected from weather and direct sunlight at temperatures above 40°F (5°C).
- B. The ambient and wall temperature shall be a minimum of 40°F (5°C) and shall remain so for at least 24 hours after installation.

2.0 Products

All components of the Aggre-flex System shall be manufactured by Master Wall and supplied by an authorized distributor.

A. Water Barrier & Flashing Tapes:

1. WeatherStop: A 100% pure acrylic-based adhesive that is field mixed with Type I Portland cement.
2. WeatherStop Tape: A self-adhesive flashing tape.

B. Master Wall Adhesives:

1. Foam & Mesh Adhesive (F&M): A 100% pure acrylic-based adhesive that is field mixed with Portland cement.
2. F&M Plus: A high-build 100% pure acrylic-based fiber reinforced adhesive that is field mixed with Portland cement.
3. Master Wall Bagged Base (MBB): A ready to use dry base that is field mixed with water.

C. Master Wall Insulation Board: Molded Expanded Polystyrene insulation board manufactured to Master Wall specifications.

D. Aggre-flex Mesh: Available in Standard, Detail, Hi-Tech, Medium, Strong and Ultra.

E. Master Wall Base Coats:

1. Foam & Mesh Adhesive (F&M).
2. F&M Plus.
3. Master Wall Bagged Base (MBB).
4. Guardian: A waterproof 100% pure acrylic-based fiber reinforced adhesive that is field mixed with Portland cement.

E. Superior Finish: 100% pure acrylic formulation with integral color and texture. Perfect, Spray, Desert Sand, R-Coarse and Refinish textures.

F. Master Wall Coatings:

1. Primecoat: A water-based primer.
2. Sanded Primecoat: Sanded water-based primer.
3. Roller-flex: A water-based architectural finish coating.

3.0 Installation

A. Inspect the substrate to ensure that it is free of all foreign materials that would affect the adhesion of the *Aggre-flex Commercial Drainage* System.

B. Apply the system in strict accordance with Master Wall specifications, product data sheets, architectural drawings and architectural specifications.

More Information



See full specifications
and
details at
masterwall.com

Commercial Drainage EIFS