



Master Wall Inc.
Building a Culture of Excellence

AIRSTOP FOR CMU

SYSTEM DETAIL



1. CMU/CONCRETE/MASONRY SUBSTRATE
2. AIRSTOP SKIM COAT
3. AIRSTOP SCRATCH COAT
4. CEMPLASTER FIBERSTUCCO OR APPROVED COBRAND STUCCO
5. PRIMECOAT (OPTIONAL)
6. SUPERIOR FINISH

MWAS-01 CROSS SECTION

M Master Wall Inc.
Building a Culture of Excellence

PO Box 397 · Fortson · GA · 31808 · 800-755-0825 · masterwall.com

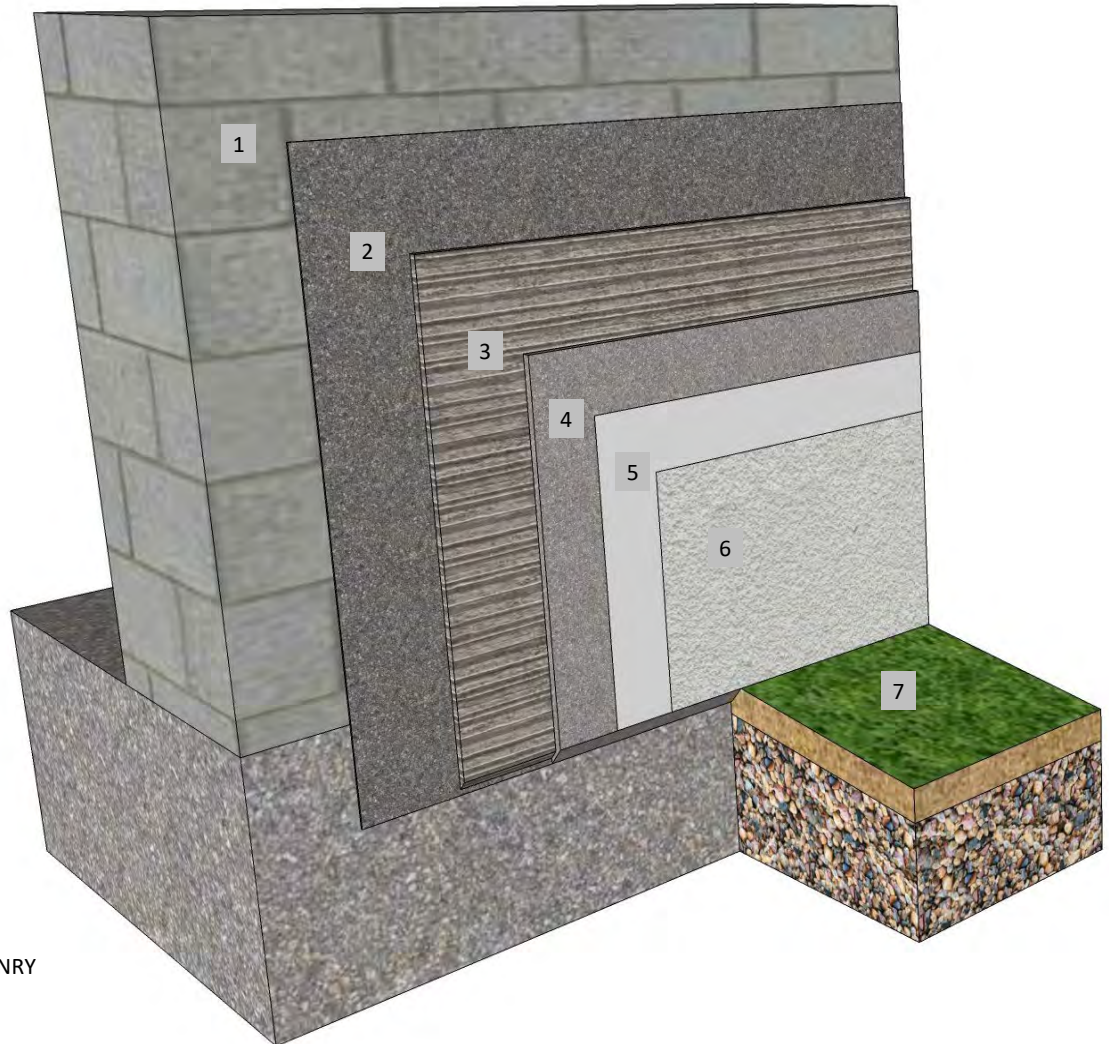
These drawings relay the conceptual conditions of Master Wall® Systems and are not the construction drawings. Ultimately the design and detailing of an entire wall system is the responsibility of a professional. These details will guide the design professional in the use of Master Wall® Products. Master Wall disclaims design, warranty or construction intent or responsibility. Bold or Brand Name = Master Wall® Product. ©2025 Master Wall Inc.®



Master Wall Inc.
Building a Culture of Excellence

AIRSTOP FOR CMU

SYSTEM DETAIL



1. CMU/CONCRETE/MASONRY SUBSTRATE
2. AIRSTOP SKIM COAT
3. AIRSTOP SCRATCH COAT
4. CEMPLASTER FIBERSTUCCO OR APPROVED COBRAND STUCCO
5. PRIMECOAT (OPTIONAL)
6. SUPERIOR FINISH
7. DRAINED SOIL, SLOPE TO DRAIN

MWAS-02 DETAIL AT GRADE

M Master Wall Inc.
Building a Culture of Excellence

PO Box 397 · Fortson · GA · 31808 · 800-755-0825 · masterwall.com

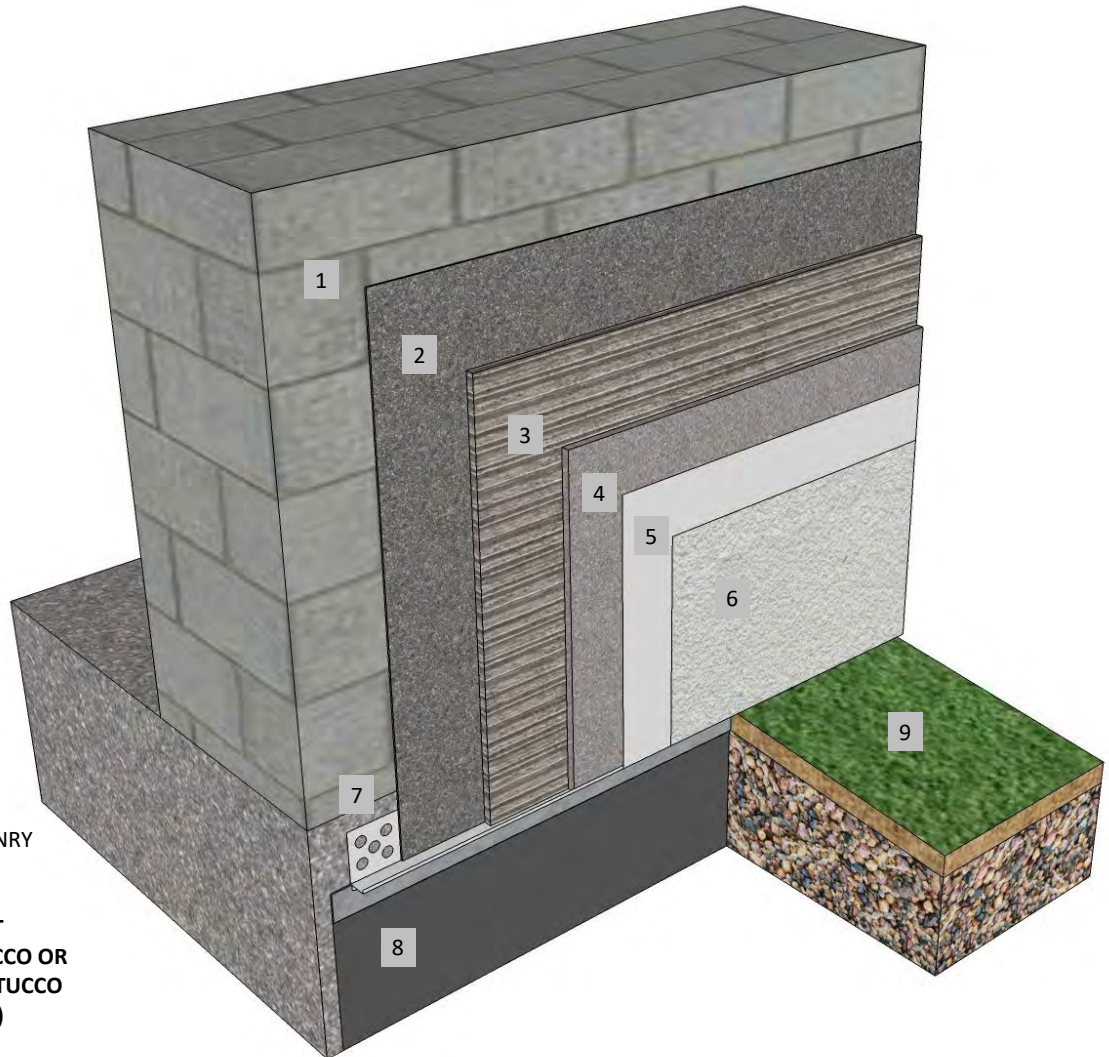
These drawings relay the conceptual conditions of Master Wall® Systems and are not the construction drawings. Ultimately the design and detailing of an entire wall system is the responsibility of a professional. These details will guide the design professional in the use of Master Wall® Products. Master Wall disclaims design, warranty or construction intent or responsibility. Bold or Brand Name = Master Wall® Product. ©2025 Master Wall Inc.®



Master Wall Inc.
Building a Culture of Excellence

AIRSTOP FOR CMU

SYSTEM DETAIL



1. CMU/CONCRETE/MASONRY SUBSTRATE
2. AIRSTOP SKIM COAT
3. AIRSTOP SCRATCH COAT
4. CEMPLASTER FIBERSTUCCO OR APPROVED COBRAND STUCCO
5. PRIMECOAT (OPTIONAL)
6. SUPERIOR FINISH
7. CASING BEAD ACCESSORY
8. WATERPROOFING WITH TERMINATION, SEAL TO CASING BEAD IF ALLOWED BY MANUFACTURER
9. DRAINED SOIL, SLOPE TO DRAIN

MWAS-03 DETAIL AT GRADE WITH WATERPROOFING

M Master Wall Inc.
Building a Culture of Excellence

PO Box 397 · Fortson · GA · 31808 · 800-755-0825 · masterwall.com

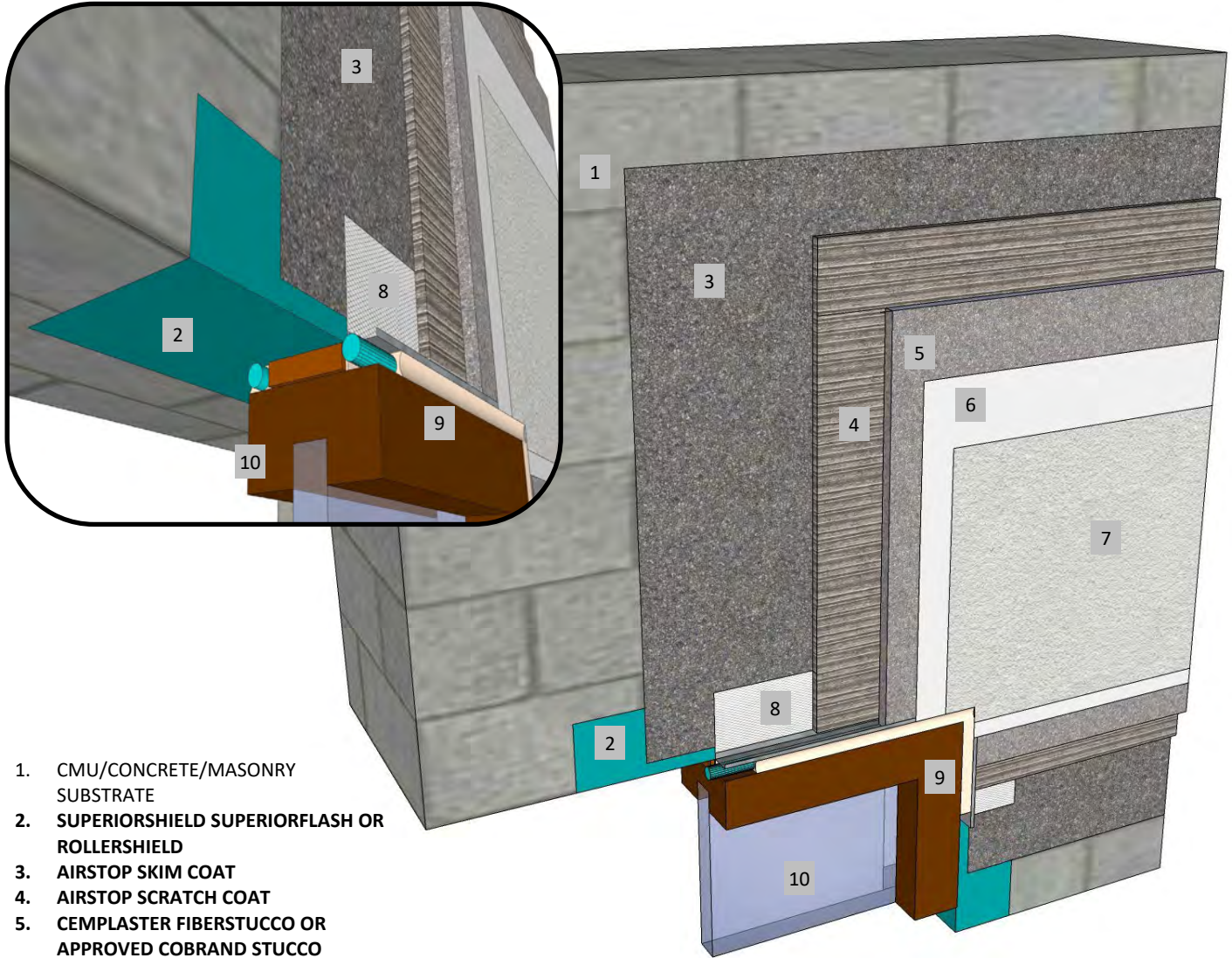
These drawings relay the conceptual conditions of Master Wall® Systems and are not the construction drawings. Ultimately the design and detailing of an entire wall system is the responsibility of a professional. These details will guide the design professional in the use of Master Wall® Products. Master Wall disclaims design, warranty or construction intent or responsibility. Bold or Brand Name = Master Wall® Product. ©2025 Master Wall Inc.®



Master Wall Inc.
Building a Culture of Excellence

AIRSTOP FOR CMU

SYSTEM DETAIL



1. CMU/CONCRETE/MASONRY SUBSTRATE
2. SUPERIORSHIELD SUPERIORFLASH OR ROLLERSHIELD
3. AIRSTOP SKIM COAT
4. AIRSTOP SCRATCH COAT
5. CEMPLASTER FIBERSTUCCO OR APPROVED COBRAND STUCCO
6. PRIMECOAT (OPTIONAL)
7. SUPERIOR FINISH
8. STUCCO CASING BEAD
9. SEALANT, 3/8" MINIMUM SUGGESTED
10. WINDOW

MWAS-04 TYPICAL WINDOW HEAD

M Master Wall Inc.
Building a Culture of Excellence

PO Box 397 · Fortson · GA · 31808 · 800-755-0825 · masterwall.com

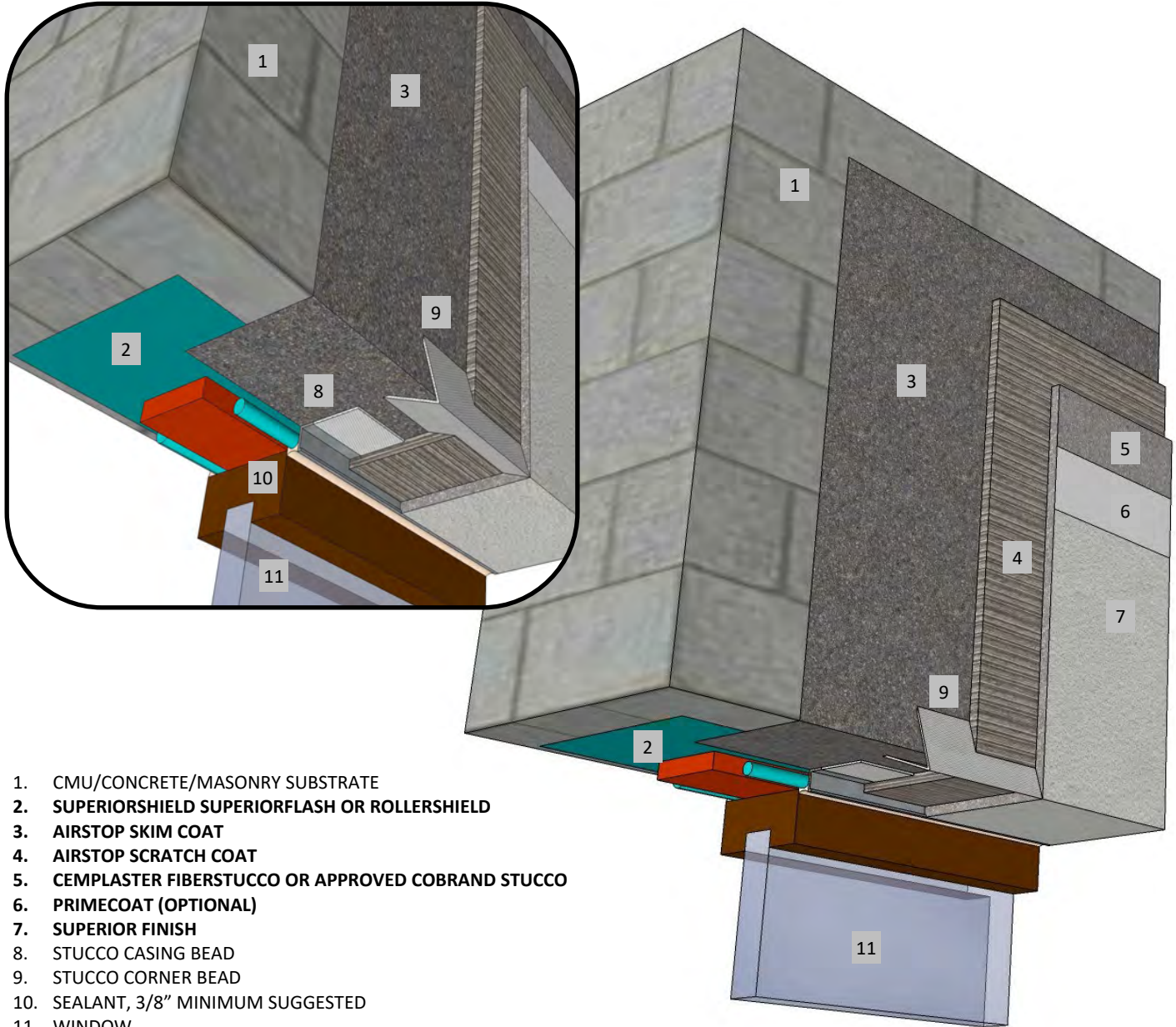
These drawings relay the conceptual conditions of Master Wall® Systems and are not the construction drawings. Ultimately the design and detailing of an entire wall system is the responsibility of a professional. These details will guide the design professional in the use of Master Wall® Products. Master Wall disclaims design, warranty or construction intent or responsibility. Bold or Brand Name = Master Wall® Product. ©2025 Master Wall Inc.®



Master Wall Inc.
Building a Culture of Excellence

AIRSTOP FOR CMU

SYSTEM DETAIL



1. CMU/CONCRETE/MASONRY SUBSTRATE
2. SUPERIORSHIELD SUPERIORFLASH OR ROLLERSHIELD
3. AIRSTOP SKIM COAT
4. AIRSTOP SCRATCH COAT
5. CEMPLASTER FIBERSTUCCO OR APPROVED COBRAND STUCCO
6. PRIMECOAT (OPTIONAL)
7. SUPERIOR FINISH
8. STUCCO CASING BEAD
9. STUCCO CORNER BEAD
10. SEALANT, 3/8" MINIMUM SUGGESTED
11. WINDOW

MWAS-05 RECESSED WINDOW HEAD



PO Box 397 · Fortson · GA · 31808 · 800-755-0825 · masterwall.com

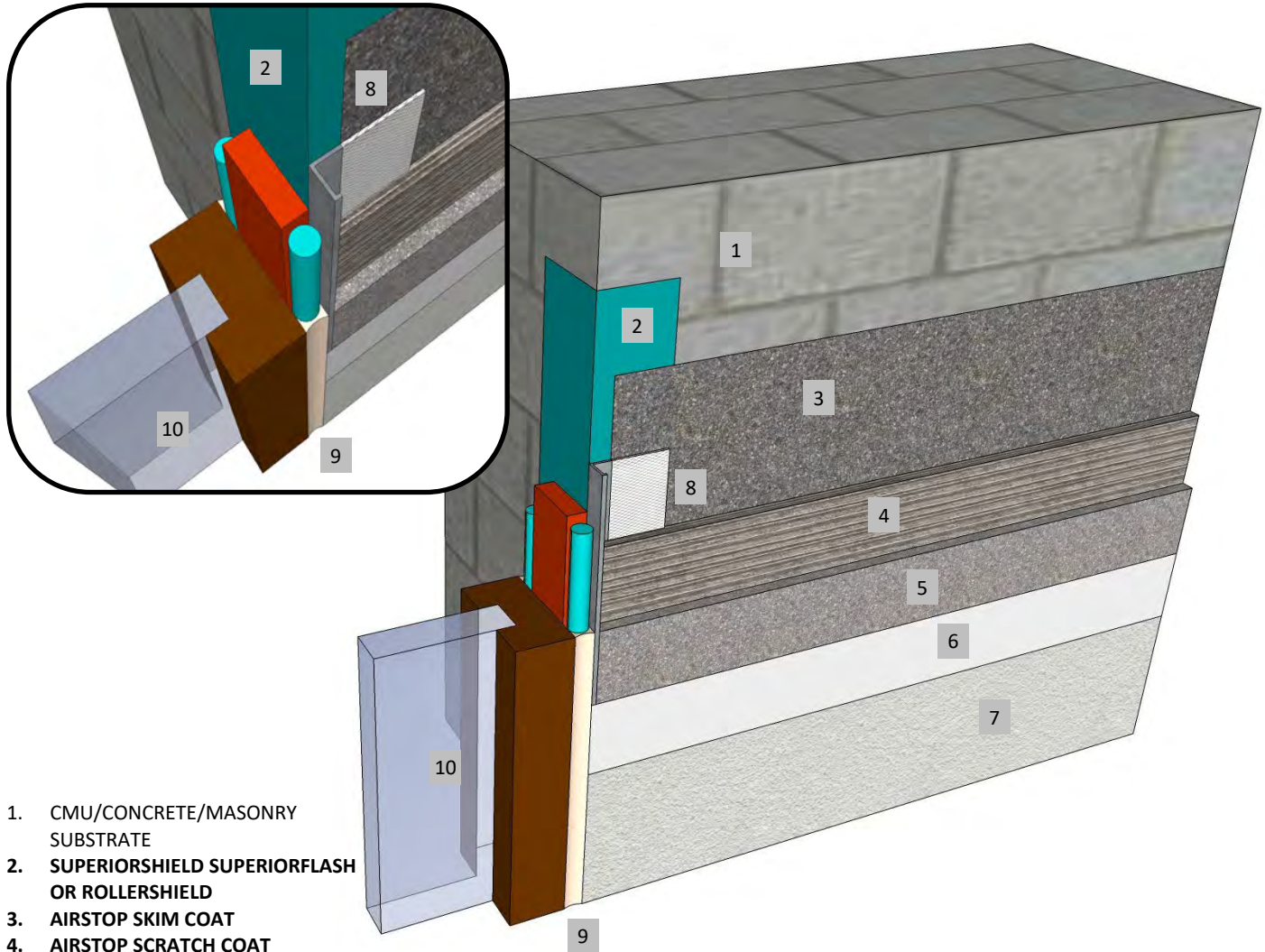
These drawings relay the conceptual conditions of Master Wall® Systems and are not the construction drawings. Ultimately the design and detailing of an entire wall system is the responsibility of a professional. These details will guide the design professional in the use of Master Wall® Products. Master Wall disclaims design, warranty or construction intent or responsibility. Bold or Brand Name = Master Wall® Product. ©2025 Master Wall Inc.®



Master Wall Inc.
Building a Culture of Excellence

AIRSTOP FOR CMU

SYSTEM DETAIL



1. CMU/CONCRETE/MASONRY SUBSTRATE
2. SUPERIORSHIELD SUPERIORFLASH OR ROLLERSHIELD
3. AIRSTOP SKIM COAT
4. AIRSTOP SCRATCH COAT
5. CEMPLASTER FIBERSTUCCO OR APPROVED COBRAND STUCCO
6. PRIMECOAT (OPTIONAL)
7. SUPERIOR FINISH
8. STUCCO CASING BEAD
9. SEALANT JOINT – 3/8" MINIMUM SUGGESTED
10. WINDOW

MWAS-06 WINDOW JAMB

M Master Wall Inc.
Building a Culture of Excellence

PO Box 397 · Fortson · GA · 31808 · 800-755-0825 · masterwall.com

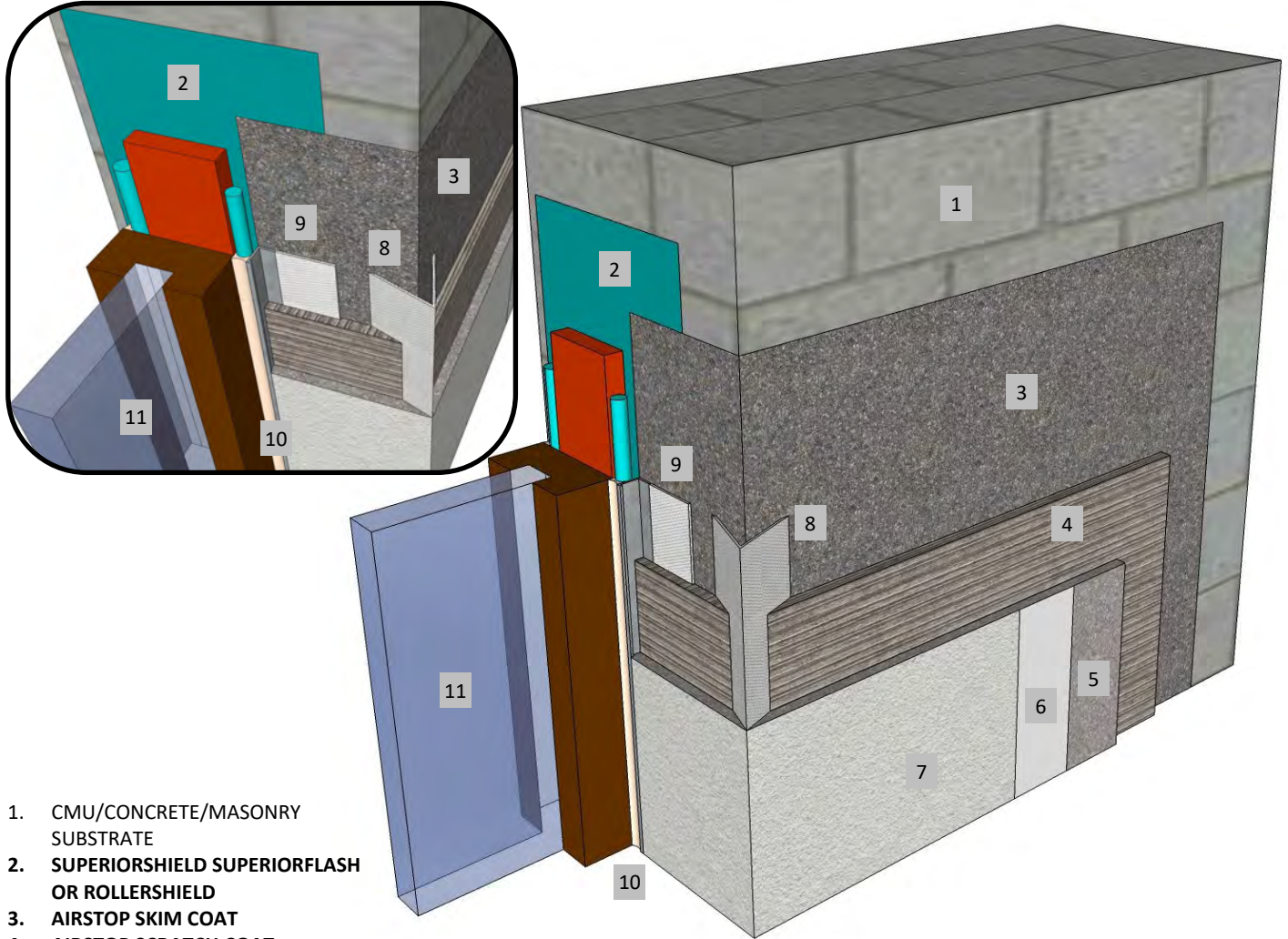
These drawings relay the conceptual conditions of Master Wall® Systems and are not the construction drawings. Ultimately the design and detailing of an entire wall system is the responsibility of a professional. These details will guide the design professional in the use of Master Wall® Products. Master Wall disclaims design, warranty or construction intent or responsibility. Bold or Brand Name = Master Wall® Product. ©2025 Master Wall Inc.®



Master Wall Inc.®
Building a Culture of Excellence

AIRSTOP FOR CMU

SYSTEM DETAIL



1. CMU/CONCRETE/MASONRY SUBSTRATE
2. SUPERIORSHIELD SUPERIORFLASH OR ROLLERSHIELD
3. AIRSTOP SKIM COAT
4. AIRSTOP SCRATCH COAT
5. CEMPLASTER FIBERSTUCCO OR APPROVED COBRAND STUCCO
6. PRIMECOAT (OPTIONAL)
7. SUPERIOR FINISH
8. STUCCO CORNER BEAD
9. STUCCO CASING BEAD
10. SEALANT JOINT – 3/8" MINIMUM SUGGESTED
11. WINDOW

MWAS-07 RECESSED WINDOW JAMB



PO Box 397 · Fortson · GA · 31808 · 800-755-0825 · masterwall.com

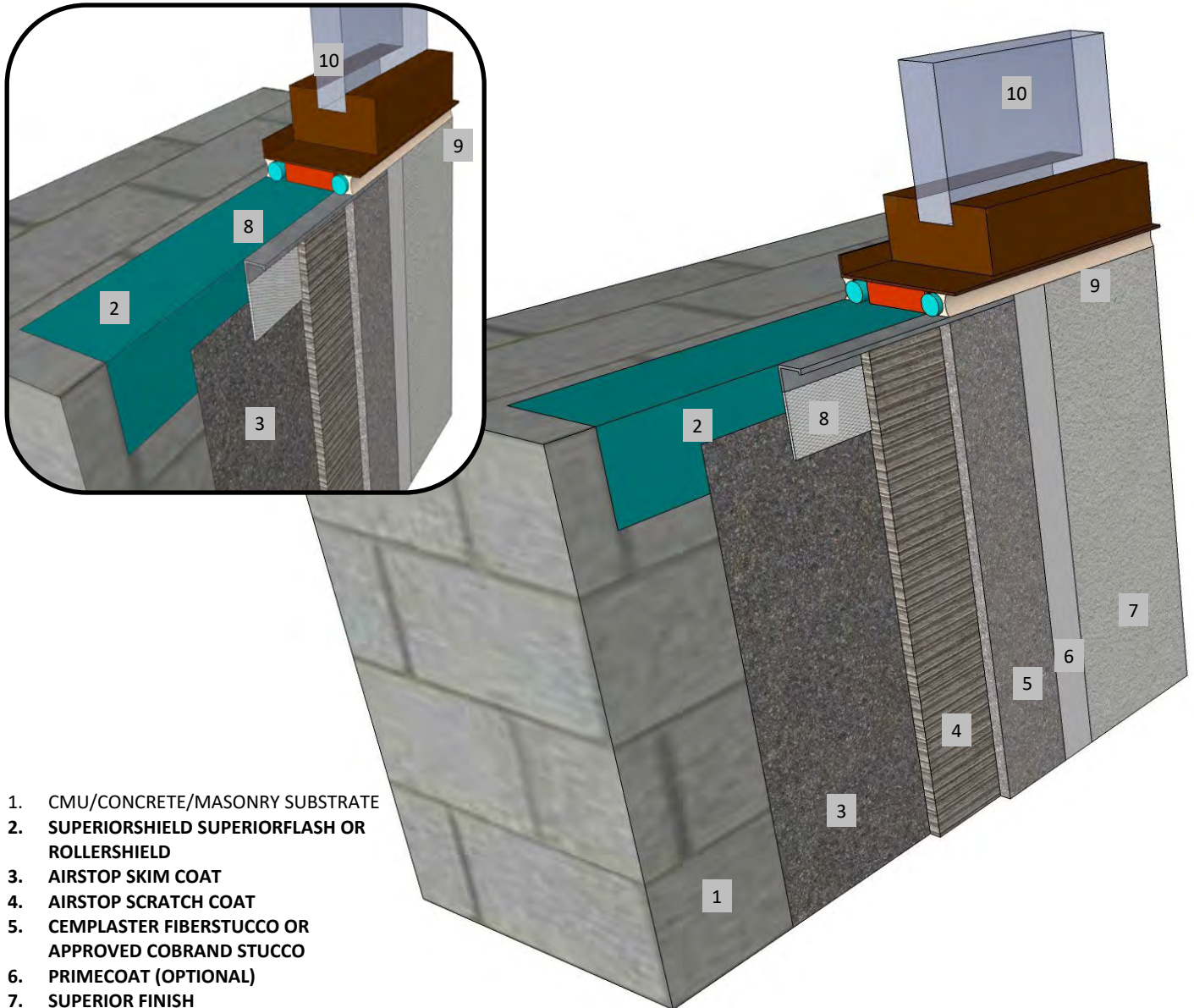
These drawings relay the conceptual conditions of Master Wall® Systems and are not the construction drawings. Ultimately the design and detailing of an entire wall system is the responsibility of a professional. These details will guide the design professional in the use of Master Wall® Products. Master Wall disclaims design, warranty or construction intent or responsibility. Bold or Brand Name = Master Wall® Product. ©2025 Master Wall Inc.®



Master Wall Inc.
Building a Culture of Excellence

AIRSTOP FOR CMU

SYSTEM DETAIL



1. CMU/CONCRETE/MASONRY SUBSTRATE
2. SUPERIORSHIELD SUPERIORFLASH OR ROLLERSHIELD
3. AIRSTOP SKIM COAT
4. AIRSTOP SCRATCH COAT
5. CEMPLASTER FIBERSTUCCO OR APPROVED COBRAND STUCCO
6. PRIMECOAT (OPTIONAL)
7. SUPERIOR FINISH
8. STUCCO CASING BEAD
9. SEALANT JOINT – 3/8" MINIMUM SUGGESTED
10. WINDOW – WITH SILL PAN SHOWN

MWAS-08 WINDOW SILL

M Master Wall Inc.
Building a Culture of Excellence

PO Box 397 · Fortson · GA · 31808 · 800-755-0825 · masterwall.com

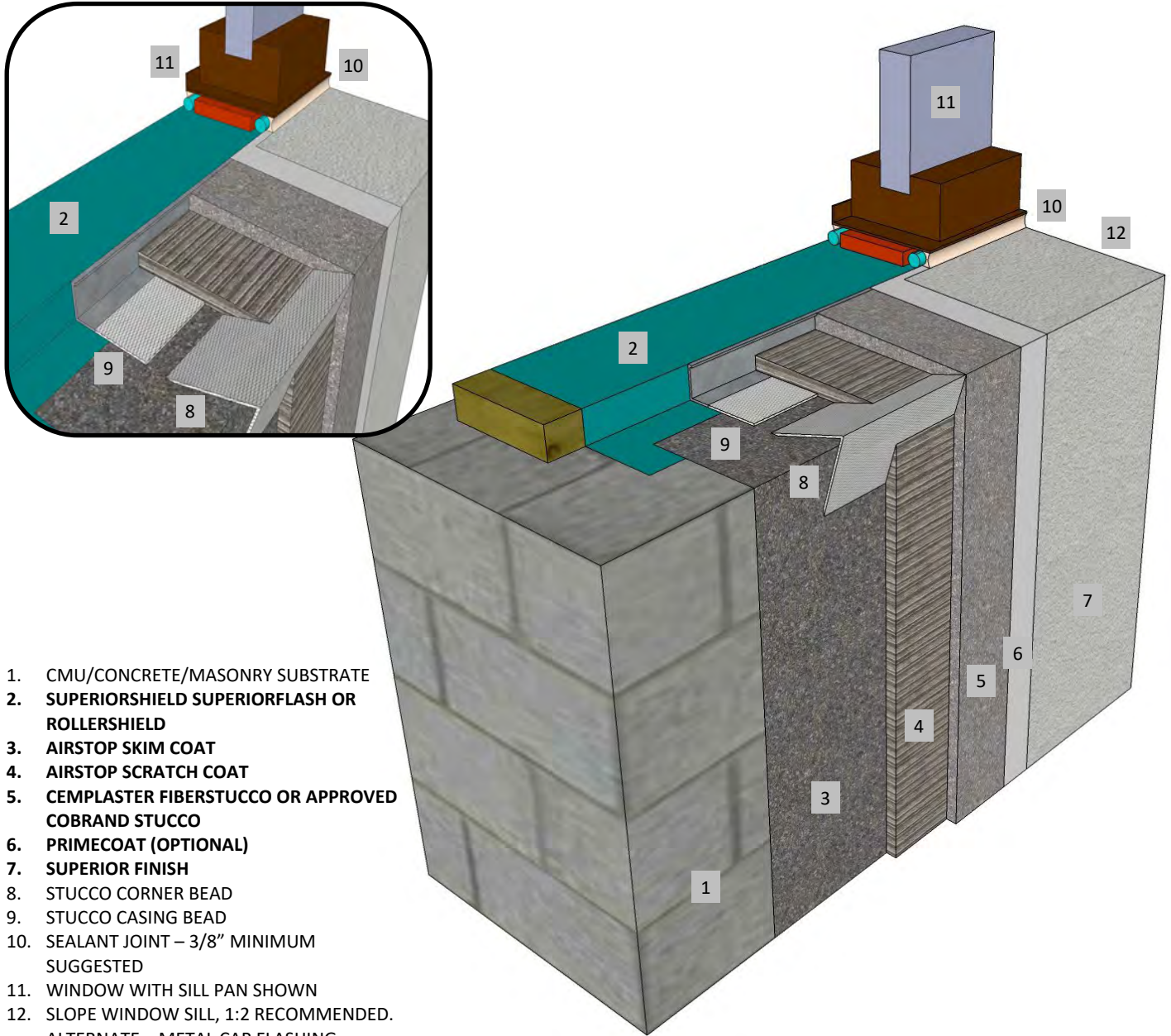
These drawings relay the conceptual conditions of Master Wall® Systems and are not the construction drawings. Ultimately the design and detailing of an entire wall system is the responsibility of a professional. These details will guide the design professional in the use of Master Wall® Products. Master Wall disclaims design, warranty or construction intent or responsibility. Bold or Brand Name = Master Wall® Product. ©2025 Master Wall Inc.®



Master Wall Inc.
Building a Culture of Excellence

AIRSTOP FOR CMU

SYSTEM DETAIL



1. CMU/CONCRETE/MASONRY SUBSTRATE
2. SUPERIORSHIELD SUPERIORFLASH OR ROLLERSHIELD
3. AIRSTOP SKIM COAT
4. AIRSTOP SCRATCH COAT
5. CEMPLASTER FIBERSTUCCO OR APPROVED COBRAND STUCCO
6. PRIMECOAT (OPTIONAL)
7. SUPERIOR FINISH
8. STUCCO CORNER BEAD
9. STUCCO CASING BEAD
10. SEALANT JOINT – 3/8" MINIMUM SUGGESTED
11. WINDOW WITH SILL PAN SHOWN
12. SLOPE WINDOW SILL, 1:2 RECOMMENDED. ALTERNATE – METAL CAP FLASHING

MWAS-09 RECESSED WINDOW SILL

M Master Wall Inc.
Building a Culture of Excellence

PO Box 397 · Fortson · GA · 31808 · 800-755-0825 · masterwall.com

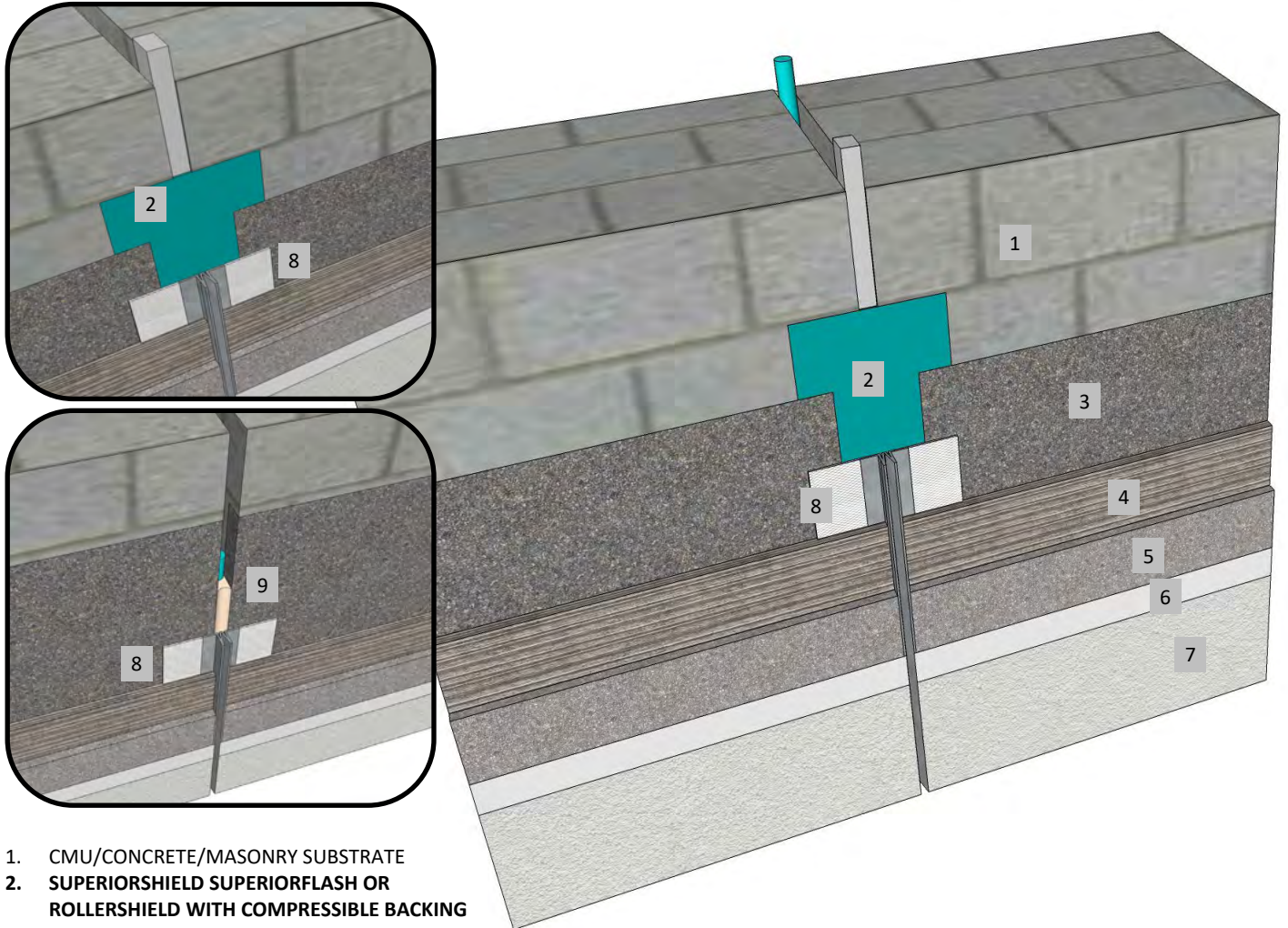
These drawings relay the conceptual conditions of Master Wall® Systems and are not the construction drawings. Ultimately the design and detailing of an entire wall system is the responsibility of a professional. These details will guide the design professional in the use of Master Wall® Products. Master Wall disclaims design, warranty or construction intent or responsibility. Bold or Brand Name = Master Wall® Product. ©2025 Master Wall Inc.®



Master Wall Inc.
Building a Culture of Excellence

AIRSTOP FOR CMU

SYSTEM DETAIL



1. CMU/CONCRETE/MASONRY SUBSTRATE
2. SUPERIORSHIELD SUPERIORFLASH OR ROLLERSHIELD WITH COMPRESSIBLE BACKING
3. AIRSTOP SKIM COAT
4. AIRSTOP SCRATCH COAT
5. CEMPLASTER FIBERSTUCCO OR APPROVED COBRAND STUCCO
6. PRIMECOAT (OPTIONAL)
7. SUPERIOR FINISH
8. STUCCO CONTROL JOINT
9. ALTERNATE: AIRSTOP RETURNED INTO JOINT WITH SUPERIORSHIELD SMP SEALANT OR OTHER SEALANT

MWAS-10 MASONRY CONTROL JOINT



PO Box 397 · Fortson · GA · 31808 · 800-755-0825 · masterwall.com

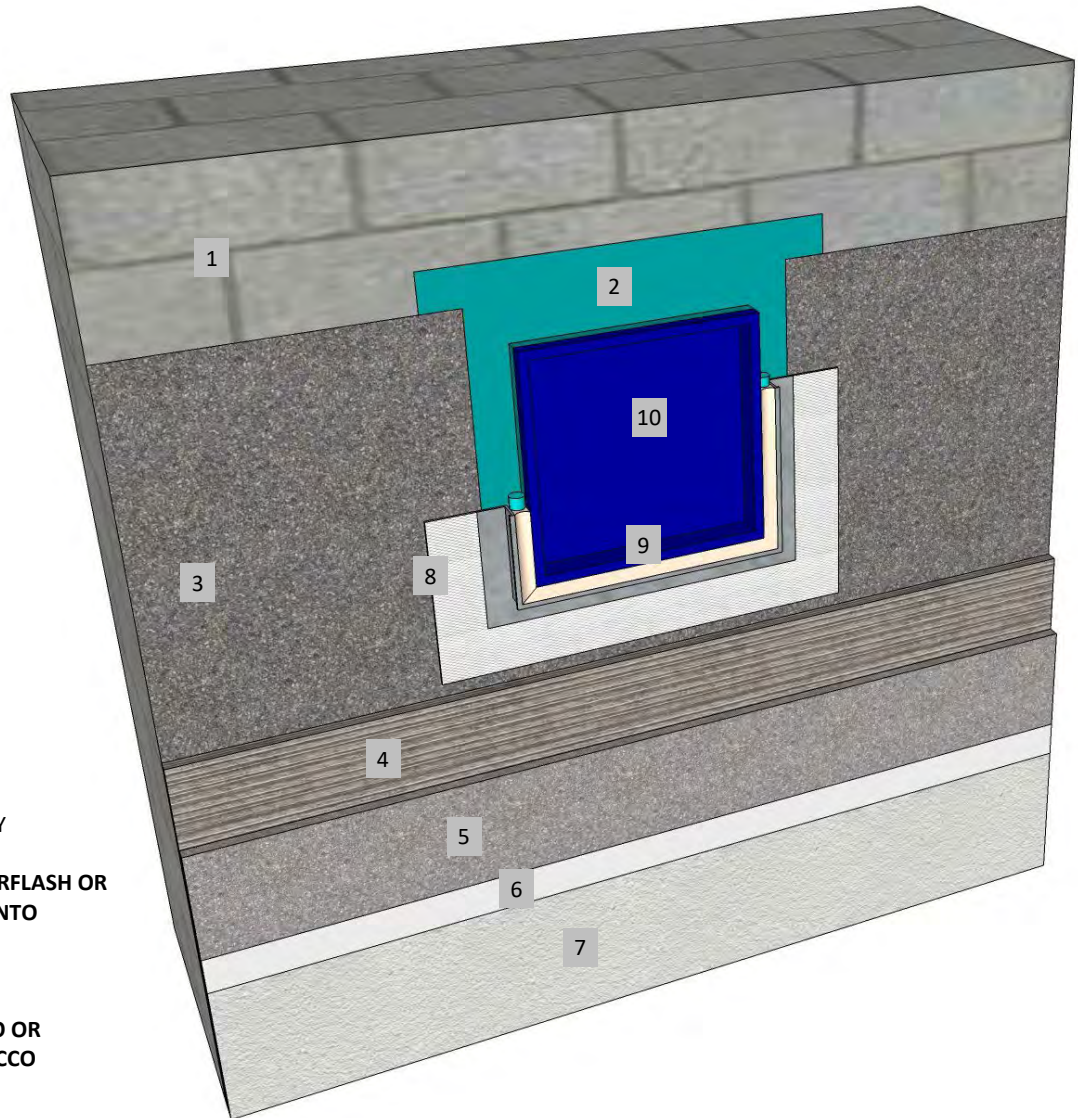
These drawings relay the conceptual conditions of Master Wall® Systems and are not the construction drawings. Ultimately the design and detailing of an entire wall system is the responsibility of a professional. These details will guide the design professional in the use of Master Wall® Products. Master Wall disclaims design, warranty or construction intent or responsibility. Bold or Brand Name = Master Wall® Product. ©2025 Master Wall Inc.®



Master Wall Inc.
Building a Culture of Excellence

AIRSTOP FOR CMU

SYSTEM DETAIL



1. CMU/CONCRETE/MASONRY SUBSTRATE
2. SUPERIORSHIELD SUPERIORFLASH OR ROLLERSHIELD FLASHED ONTO PENETRATION
3. AIRSTOP SKIM COAT
4. AIRSTOP SCRATCH COAT
5. CEMPLASTER FIBERSTUCCO OR APPROVED COBRAND STUCCO
6. PRIMECOAT (OPTIONAL)
7. SUPERIOR FINISH
8. STUCCO CASING BEAD AS NEEDED FOR LARGER PENETRATIONS
9. SEALANT JOINT – 3/8" MINIMUM SUGGESTED
10. PENETRATION

MWAS-11 PENETRATION

M Master Wall Inc.
Building a Culture of Excellence

PO Box 397 · Fortson · GA · 31808 · 800-755-0825 · masterwall.com

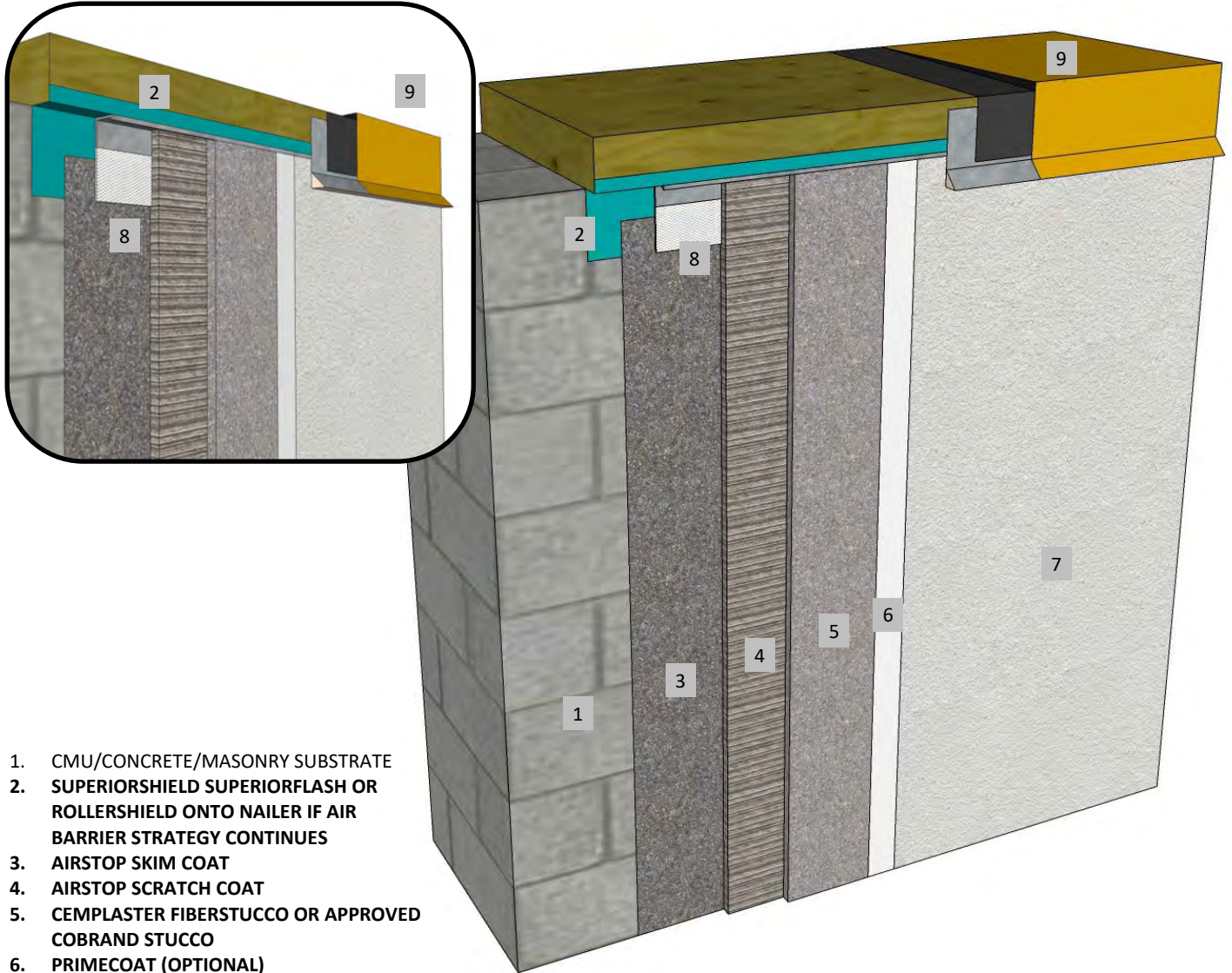
These drawings relay the conceptual conditions of Master Wall® Systems and are not the construction drawings. Ultimately the design and detailing of an entire wall system is the responsibility of a professional. These details will guide the design professional in the use of Master Wall® Products. Master Wall disclaims design, warranty or construction intent or responsibility. Bold or Brand Name = Master Wall® Product. ©2025 Master Wall Inc.®



Master Wall Inc.
Building a Culture of Excellence

AIRSTOP FOR CMU

SYSTEM DETAIL



1. CMU/CONCRETE/MASONRY SUBSTRATE
2. SUPERIORSHIELD SUPERIORFLASH OR ROLLERSHIELD ONTO NAILER IF AIR BARRIER STRATEGY CONTINUES
3. AIRSTOP SKIM COAT
4. AIRSTOP SCRATCH COAT
5. CEMPLASTER FIBERSTUCCO OR APPROVED COBRAND STUCCO
6. PRIMECOAT (OPTIONAL)
7. SUPERIOR FINISH
8. STUCCO CASING BEAD
9. ROOF CAP WITH CONTINUOUS CLEAT, EXTEND 2-1/2" MIN. OVER STUCCO, SEAL LOWER EDGE

MWAS-12 ROOF CAP

M Master Wall Inc.
Building a Culture of Excellence

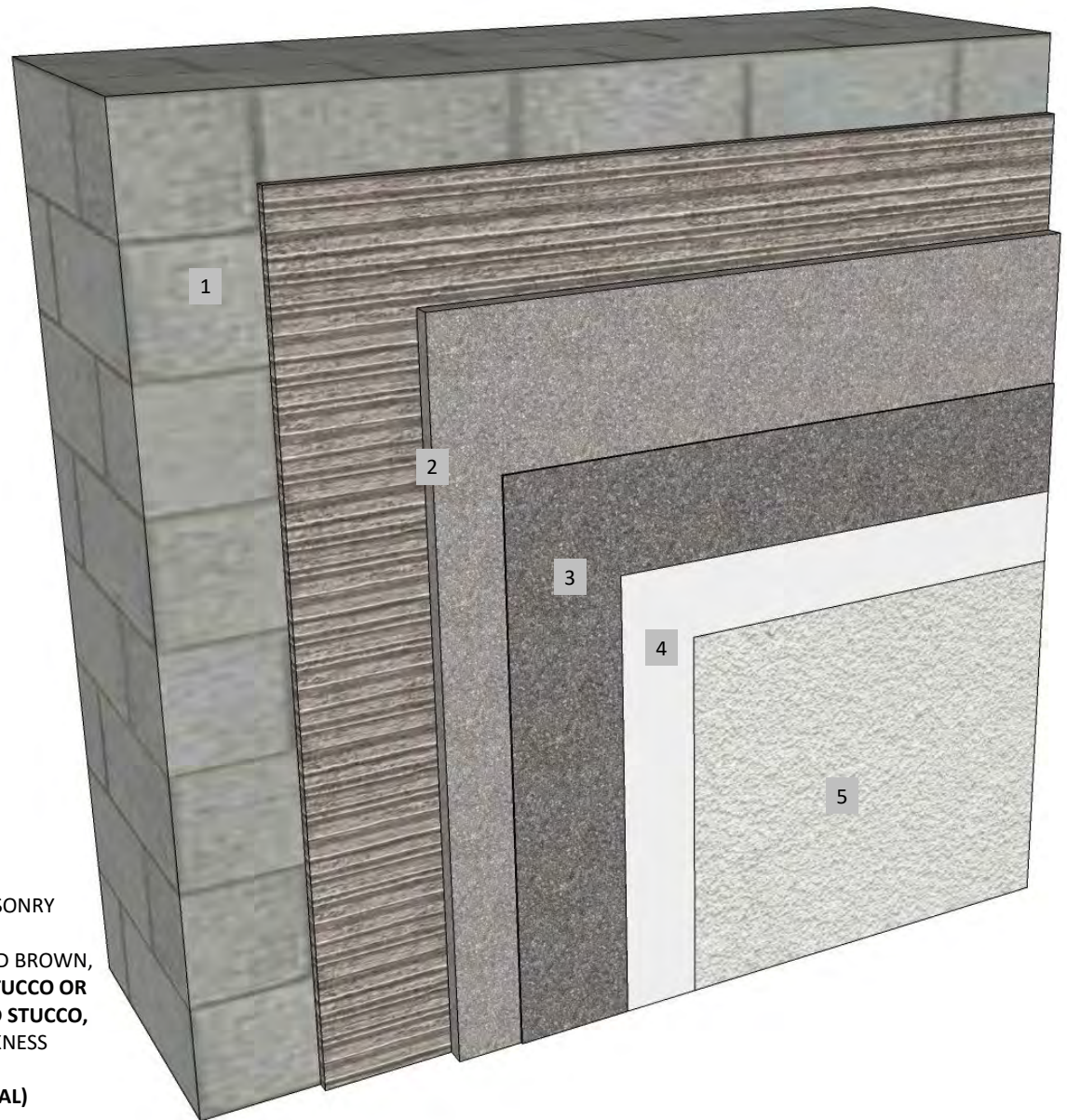
These drawings relay the conceptual conditions of Master Wall® Systems and are not the construction drawings. Ultimately the design and detailing of an entire wall system is the responsibility of a professional. These details will guide the design professional in the use of Master Wall® Products. Master Wall disclaims design, warranty or construction intent or responsibility. Bold or Brand Name = Master Wall® Product. ©2025 Master Wall Inc.®



Master Wall Inc.
Building a Culture of Excellence

AIRSTOP FOR CMU

SYSTEM DETAIL



1. CMU/CONCRETE/MASONRY SUBSTRATE
2. STUCCO SCRATCH AND BROWN, CEMPLASTER FIBERSTUCCO OR APPROVED COBRAND STUCCO, 5/8" MINIMUM THICKNESS
3. AIRSTOP SKIM COAT
4. PRIMECOAT (OPTIONAL)
5. SUPERIOR FINISH

MWAS-13 AIRSTOP OVERLAY

M Master Wall Inc.
Building a Culture of Excellence

PO Box 397 · Fortson · GA · 31808 · 800-755-0825 · masterwall.com

These drawings relay the conceptual conditions of Master Wall® Systems and are not the construction drawings. Ultimately the design and detailing of an entire wall system is the responsibility of a professional. These details will guide the design professional in the use of Master Wall® Products. Master Wall disclaims design, warranty or construction intent or responsibility. Bold or Brand Name = Master Wall® Product. ©2025 Master Wall Inc.®