

Aggre-Stone

Bold Granite Look Finishes



Coastal Plains



Fallen Snow



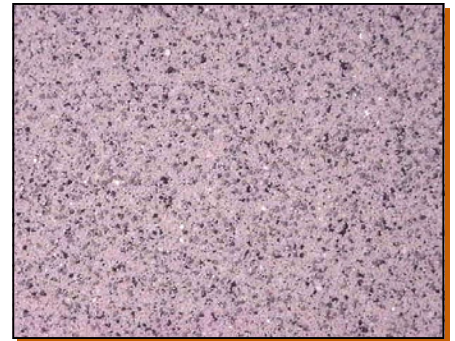
Georgia Clay



Highland Green



Rugged Peak



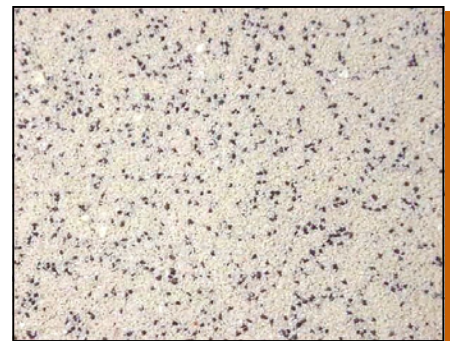
Smokey Mountain



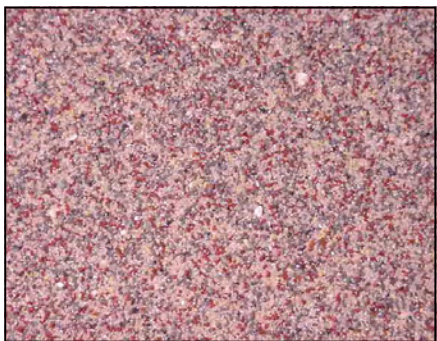
Storm Cloud



Sunset Blush



Upland Fawn



White Wash



Granite Look Finish

Integrally Colored Stone with Varied Size

Aggre-stone Finish is a bolder multi-colored textured surface that resembles cut granite. Applied over Primecoat primer, it may be used as the final color and texture coat for various Master Wall systems or other approved substrates. Aggre-stone Finishes are available in five-gallon (19L) pails and can be custom colored for specific needs. The coatings can also be used in interior applications.

Application Procedure

Job Conditions - Air and substrate temperature for application of *Aggre-stone* must be 50°F (10°C) or higher and must remain 50°F (10°C) or higher for a minimum of 24 hours. Dry time will vary by temperature and humidity. Provide temporary protection to protect the wall system from damage until permanent flashings, caps and sealants are installed. Store materials within prescribed temperature limits and out of direct sunlight. All exterior surfaces must be sloped a minimum of 1:2. Working and drying times are based upon normal room temperature conditions and will vary with temperature and humidity.

Preparation - The substrate must be approved by Master Wall Inc., clean, dry, structurally sound and free of efflorescence, oil, grease, form release agents and curing compounds or anything that would affect bond. Painted surfaces are not acceptable and must be removed. Brick, masonry and concrete should be leveled either with stucco or Master Wall base coats prior to application.

Priming - As the *Aggre-stone* binder is translucent, priming with *Primecoat* or *Sanded Primecoat* is recommended. *Primecoat* should be tinted to the predominant color of the *Aggre-stone*. See *Primecoat* Data Sheet for additional information, allow to dry a minimum of 12 hours before applying *Aggre-stone*.

Mixing - Thoroughly stir the *Aggre-stone finish* for one minute using a heavy duty 1/2" (12.7 mm) drill at 400 - 500 rpm and a heavy duty mixing paddle. Do not over mix. Small amounts of clean, potable water may be added to obtain a workable consistency. Do not exceed 24 ounces (0.7L) of water per pail. Do not add accelerators or retarders to the mixture.

Application

Over the primed surface—*Aggre-stone* Finish is typically applied in two coats, both are spray applied. *Aggre-stone* should be applied by a skilled mechanic experienced in the spraying of aggregate finishes.

Using a conventional plaster hopper gun or a proven pump, spray two coats of the finish over the primed base coat to achieve the desired texture. Apply one coat horizontally and the other vertically to achieve uniform coverage. Apply to a minimum thickness of 1/8" (3.2 mm) and a maximum thickness of 3/16" (4.8 mm). Keep the spray gun at a 90 angle to the surface maintaining the same distance to the wall at all times. The first coat should dry a minimum of one hour prior to the application of the second coat. Be cautious of flooding an area with too much finish as it may appear shinier when it dries.

Alternatively a highly skilled applicator may apply *Aggre-stone* in a single-layer application using a stainless steel trowel. Finish results may vary.

Clean Up—Tools and equipment can be cleaned with soapy water while the *Aggre-stone* is still wet.

Approved Substrates

(Prime all with Primecoat)

- Master Wall Base Coats
- Prepared Brick
- Prepared Masonry
- Prepared Concrete
- Stucco
- Interior Drywall
- Others approved in writing

Statistics

Coverage (Estimated/varies)

Per Pail : 67-80 sf (6-7.5 sm)

Pail Weight: 65 lbs (29.5kg)

Working Time: 1 hour @ room temperature

Drying Time: 48 hours @ room temperature

Application Range: 50°-110°F (10°-43°C)

Shelf Life: 2 years



Master Wall Inc.

Building a Culture of Excellence

Information contained in this product data sheet conforms to the standard detail recommendations and specifications for the installation of Master Wall Inc. products and is presented in good faith. Master Wall Inc. assumes no liability, expressed or implied as to the architecture, engineering, or workmanship of any project. This information may be concurrent with, or superseded by other applicable documents, such as specifications and details. Contact Master Wall Inc. for the most current product information.

P. O. Box 397
Fortson, GA 31808

800-755-0825

Technical 800-760-2861

masterwall.com