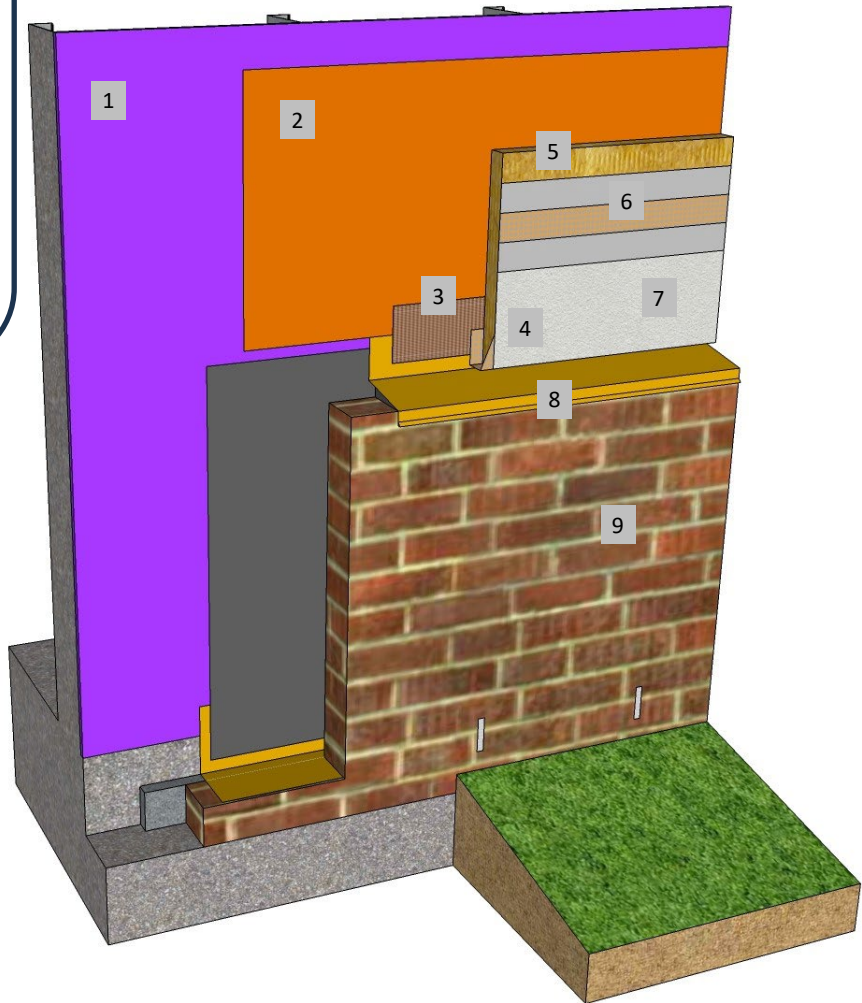
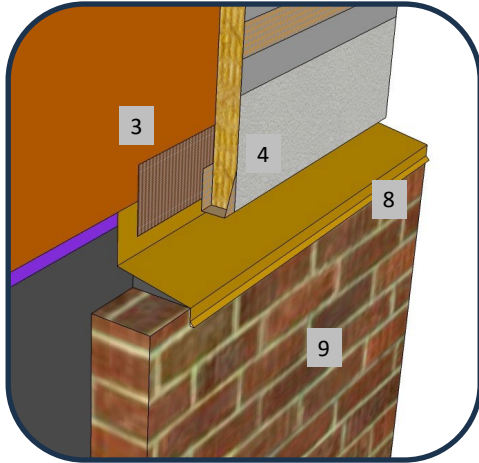




Master Wall Inc.
Building a Culture of Excellence

**ROLLERSHIELD DRAINAGE
CIFS® TYPE MW**

SYSTEM DETAIL



1. FRAMING & APPROVED SUBSTRATE
2. ROLLERSHIELD AIR/WATER BARRIER
3. SUPERIORSHIELD FLASHING TAPE
FLASHED ONTO FLASHING
4. BACKWRAPPING SHOWN, DV ROLL &
EIFS PLASTIC ACCESSORIES ARE
OPTIONAL
5. MINERAL WOOL INSULATION BOARD
ADHERED WITH CHANNELED ADHESIVE
6. MASTER WALL BASE COAT AND MESH
7. SUPERIOR FINISH
8. FLASHING, SLOPE TO DRAIN
9. DISSIMILAR MATERIAL (BRICK, STONE,
SIDING, ETC.)

NOTE: LEAVE A 1/8" (3 MM) MINIMUM GAP TO ALLOW
FOR DRAINAGE BETWEEN THE CIFS® AND FLASHING

RDCIFSMW-35 DISSIMILAR CLADDING TRANSITION WITH FLASHING

Master Wall Inc.
Building a Culture of Excellence

PO Box 397 · Fortson · GA · 31808 · 800-755-0825 · masterwall.com

These drawings relay the conceptual conditions of Master Wall® Systems and are not the construction drawings. Ultimately the design and detailing of an entire wall system is the responsibility of a professional. These details will guide the design professional in the use of Master Wall® Products. Master Wall disclaims design, warranty or construction intent or responsibility. **Bold or Brand Name = Master Wall® Product.** ©2025 Master Wall Inc.®