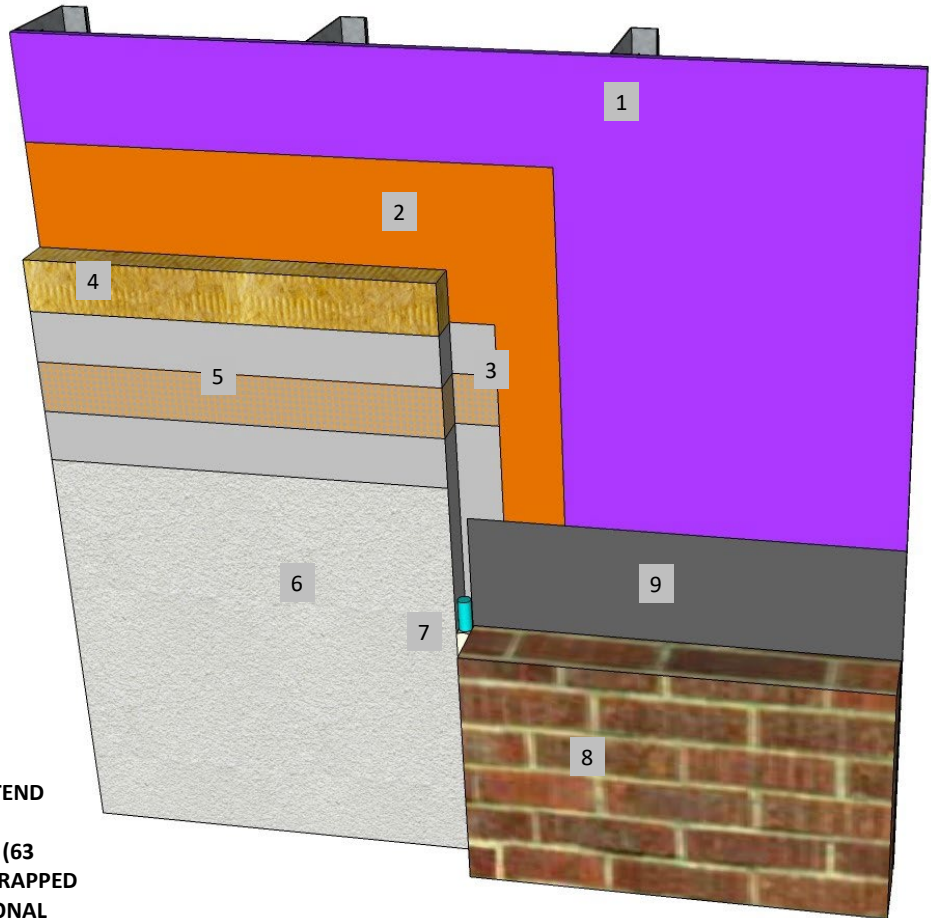
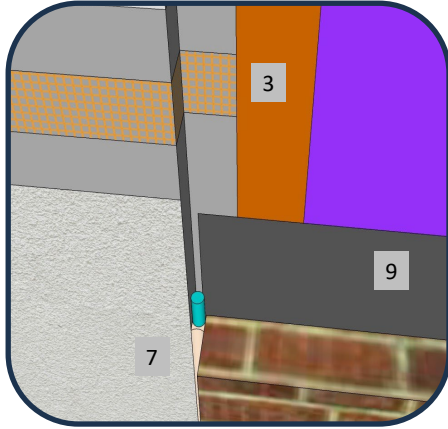




**Master Wall Inc.**  
Building a Culture of Excellence

**ROLLERSHIELD DRAINAGE  
CIFS® TYPE MW**

**SYSTEM DETAIL**



1. FRAMING & APPROVED SUBSTRATE
2. ROLLERSHIELD AIR/WATER BARRIER, EXTEND PAST SYSTEM IF POSSIBLE
3. BASE COAT AND MESH WRAPPED 2-1/2" (63 MM) MIN. ONTO WALL SHOWN, BACKWRAPPED OR EIFS PLASTIC ACCESSORIES ARE OPTIONAL
4. MINERAL WOOL INSULATION BOARD ADHERED WITH CHanneled ADHESIVE
5. MASTER WALL BASE COAT AND MESH
6. SUPERIOR FINISH
7. SEALANT JOINT SIZED FOR ANTICIPATED MOVEMENT, 3/4" (19 MM) MIN.
8. DISSIMILAR MATERIAL (BRICK, STONE, SIDING, ETC.)
9. WEATHER RESISTIVE BARRIER

BEST PRACTICE: EXTEND ROLLERSHIELD 6" (15 CM) PAST TRANSITION LOCATION AND ENCAPSULATE WITH MESH AND BASE COAT EXTENDED 2-1/2" (63 MM) ONTO THE ROLLERSHIELD.

ALTERNATE PRACTICE: BACKWRAP EIFS, THEN SEAL THE OTHER MATERIAL WATER BARRIER TO THE CIFS® WITH AN APPROVED SEALANT (BY OTHERS)

### **RDCIFSMW-33 DISSIMILAR MATERIALS**

**M Master Wall Inc.**  
Building a Culture of Excellence

PO Box 397 · Fortson · GA · 31808 · 800-755-0825 · masterwall.com

These drawings relay the conceptual conditions of Master Wall® Systems and are not the construction drawings. Ultimately the design and detailing of an entire wall system is the responsibility of a professional. These details will guide the design professional in the use of Master Wall® Products. Master Wall disclaims design, warranty or construction intent or responsibility. **Bold or Brand Name = Master Wall® Product.** ©2025 Master Wall Inc.®