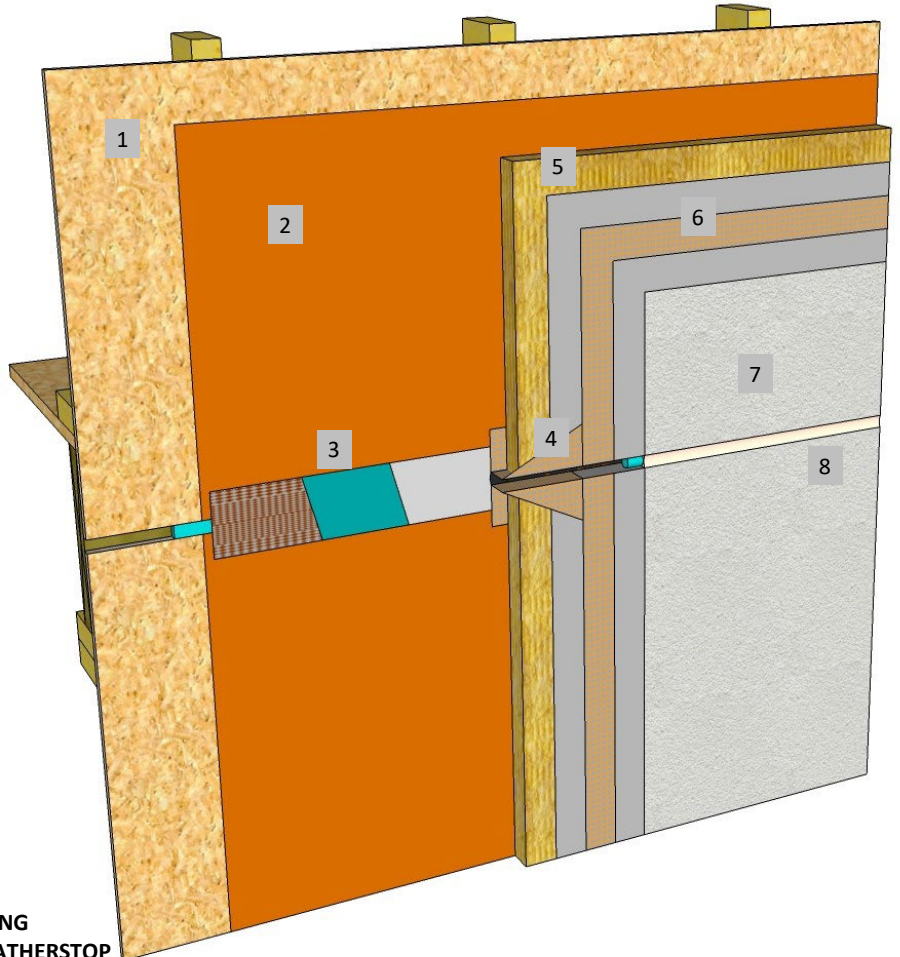
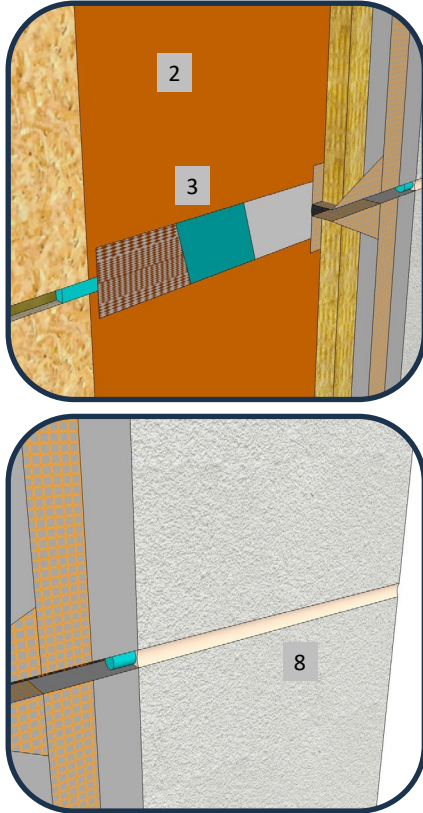




Master Wall Inc.
Building a Culture of Excellence

**ROLLERSHIELD DRAINAGE
CIFS® TYPE MW**

SYSTEM DETAIL



1. FRAMING & APPROVED SUBSTRATE
2. ROLLERSHIELD AIR/WATER BARRIER
3. EXPANSION BRIDGE: SUPERIORSHIELD FLASHING TAPE/SUPERIORFLASH WITH BACKING OR WEATHERSTOP TAPE
4. BACKWRAPPED CIFS® SHOWN, EIFS PLASTIC ACCESSORIES ARE OPTIONAL
5. MINERAL WOOL INSULATION BOARD ADHERED WITH CHANNELED ADHESIVE
6. MASTER WALL BASE COAT AND MESH
7. SUPERIOR FINISH
8. SEALANT JOINT SIZED FOR ANTICIPATED MOVEMENT, 3/4" (19 MM) MIN.

NOTE: DETAIL NEEDED WHEN 2X FRAMING MEMBERS ARE USED AS FLOOR FRAMING DUE TO CROSS-GRAIN SHRINKAGE. LIKELY NOT NEEDED WITH ENGINEERED FRAMING (VERIFY WITH MFR. & SEE TECHNICAL BULLETIN)

RDCIFSMW-29 HORIZONTAL EXPANSION JOINT - WOOD FRAME

Master Wall Inc.
Building a Culture of Excellence

PO Box 397 · Fortson · GA · 31808 · 800-755-0825 · masterwall.com

These drawings relay the conceptual conditions of Master Wall® Systems and are not the construction drawings. Ultimately the design and detailing of an entire wall system is the responsibility of a professional. These details will guide the design professional in the use of Master Wall® Products. Master Wall disclaims design, warranty or construction intent or responsibility. **Bold or Brand Name = Master Wall® Product.** ©2025 Master Wall Inc.®