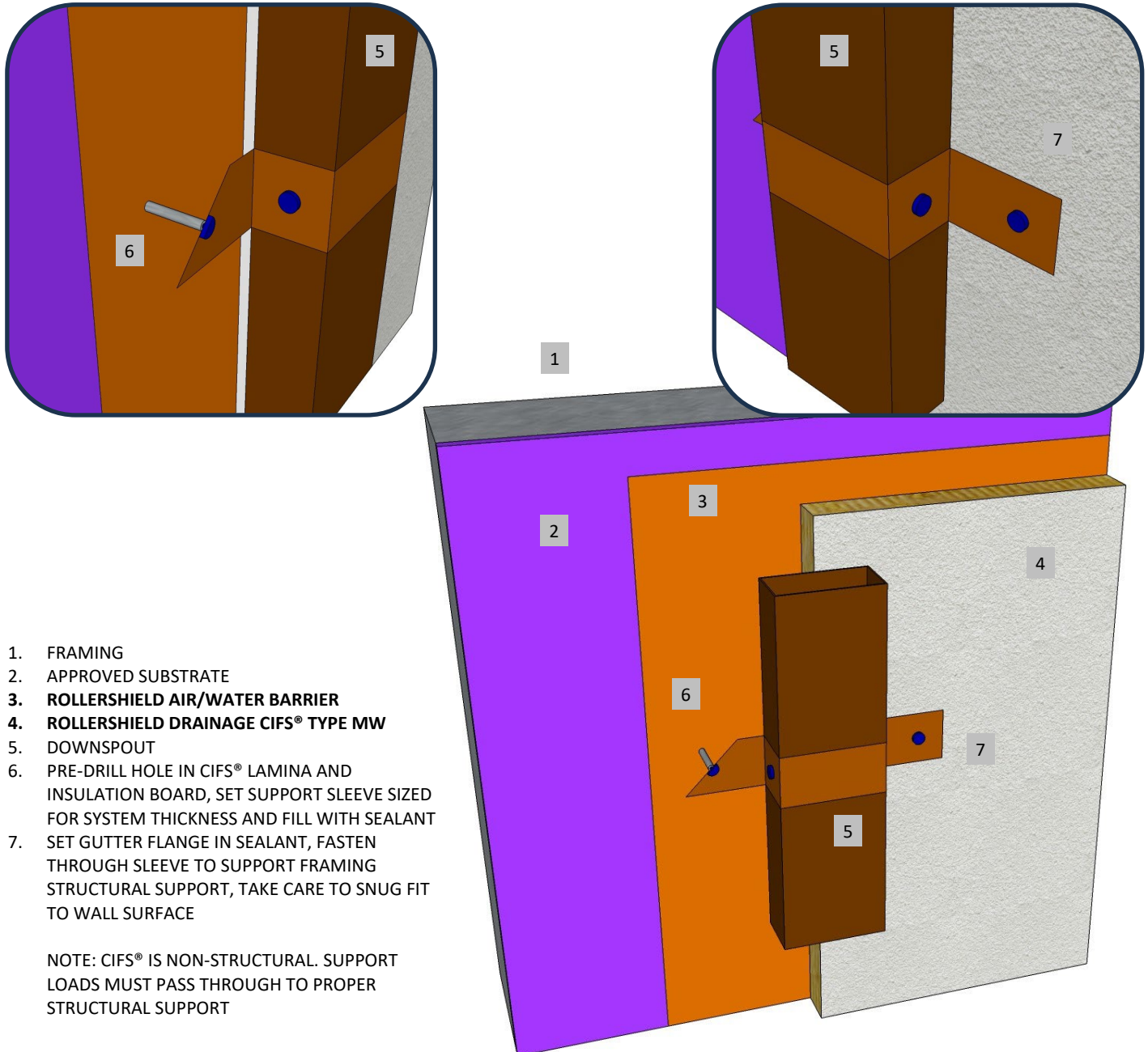




**Master Wall Inc.**  
Building a Culture of Excellence

**ROLLERSHIELD DRAINAGE  
CIFS® TYPE MW**

**SYSTEM DETAIL**



1. FRAMING
2. APPROVED SUBSTRATE
3. **ROLLERSHIELD AIR/WATER BARRIER**
4. **ROLLERSHIELD DRAINAGE CIFS® TYPE MW**
5. DOWNSPOUT
6. PRE-DRILL HOLE IN CIFS® LAMINA AND INSULATION BOARD, SET SUPPORT SLEEVE SIZED FOR SYSTEM THICKNESS AND FILL WITH SEALANT
7. SET GUTTER FLANGE IN SEALANT, FASTEN THROUGH SLEEVE TO SUPPORT FRAMING STRUCTURAL SUPPORT, TAKE CARE TO SNUG FIT TO WALL SURFACE

NOTE: CIFS® IS NON-STRUCTURAL. SUPPORT LOADS MUST PASS THROUGH TO PROPER STRUCTURAL SUPPORT

**RDCIFSMW-23 TYPICAL DOWNSPOUT ATTACHMENT**

**M Master Wall Inc.**  
Building a Culture of Excellence

These drawings relay the conceptual conditions of Master Wall® Systems and are not the construction drawings. Ultimately the design and detailing of an entire wall system is the responsibility of a professional. These details will guide the design professional in the use of Master Wall® Products. Master Wall disclaims design, warranty or construction intent or responsibility. **Bold or Brand Name = Master Wall® Product.** ©2025 Master Wall Inc.®