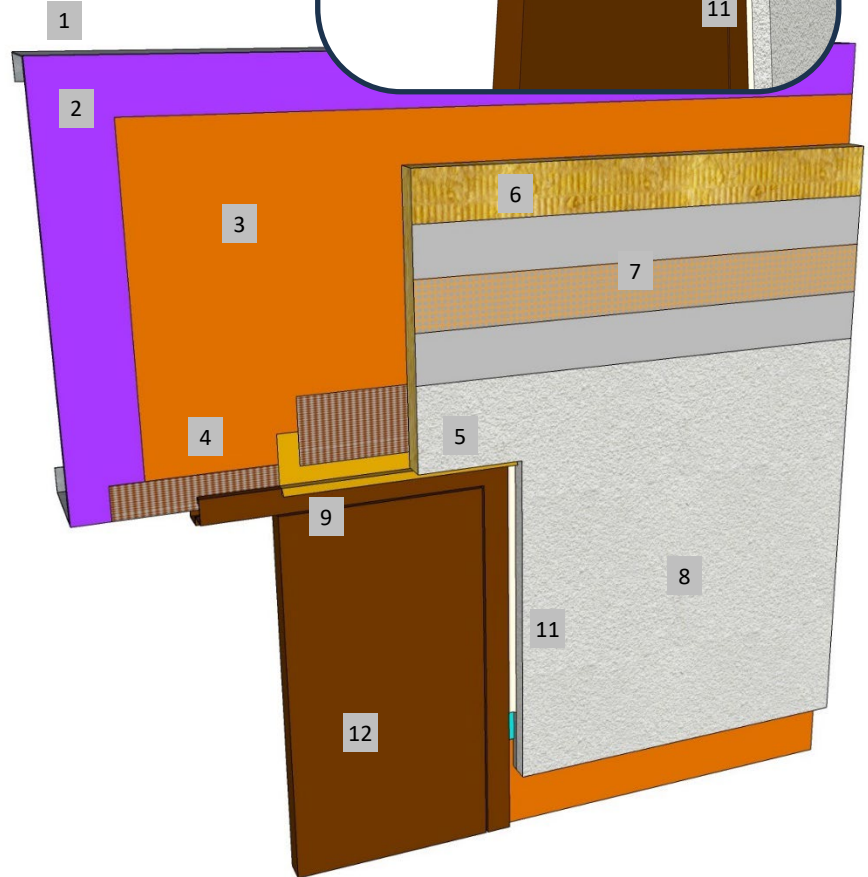
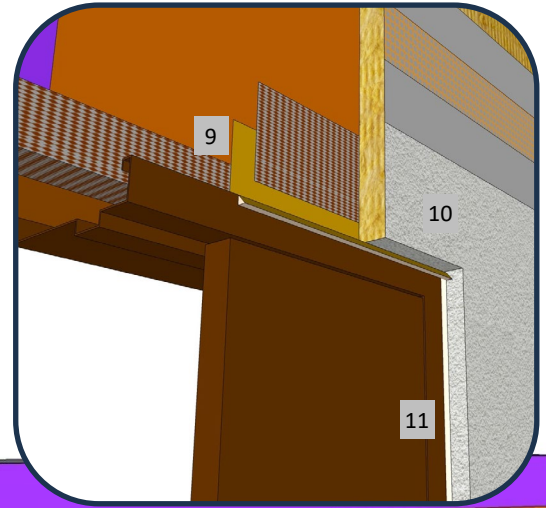
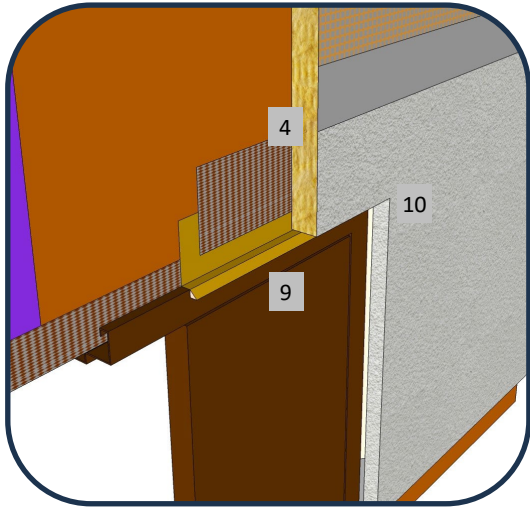




Master Wall Inc.
Building a Culture of Excellence

**ROLLERSHIELD DRAINAGE
CIFS® TYPE MW**

SYSTEM DETAIL



1. FRAMING
2. APPROVED SUBSTRATE
3. ROLLERSHIELD AIR/WATER BARRIER
4. SUPERIORSHIELD FLASHING TAPE FLASHED INTO OPENING AND ONTO DOOR FLASHING
5. BACKWRAPPED CIFS® SHOWN, DRAINAGE TRACK WITH SEALANT IS OPTIONAL.
6. MINERAL WOOL INSULATION BOARD ADHERED WITH CHANNELED ADHESIVE
7. MASTER WALL BASE COAT AND MESH
8. SUPERIOR FINISH
9. HEAD FLASHING, EXTENDED 1/2" (12.7 MM) BEYOND JAMBS WITH END DAM, SEAL FLASHING TO DOOR FRAME
10. KEEP CIFS® APPROX. 1/8" (3 MM) ABOVE HEAD FLASHING FOR DRAINAGE
11. 1/2" (12.7 MM) MIN. SEALANT JOINT & BACKER ROD @ JAMB
12. HOLLOW METAL DOOR SHOWN, INSTALL PER MANUFACTURER'S INSTRUCTIONS.

RDCIFSMW-17 TYPICAL HOLLOW METAL DOOR HEAD

Master Wall Inc.
Building a Culture of Excellence

PO Box 397 · Fortson · GA · 31808 · 800-755-0825 · masterwall.com

These drawings relay the conceptual conditions of Master Wall® Systems and are not the construction drawings. Ultimately the design and detailing of an entire wall system is the responsibility of a professional. These details will guide the design professional in the use of Master Wall® Products. Master Wall disclaims design, warranty or construction intent or responsibility. **Bold or Brand Name = Master Wall® Product.** ©2025 Master Wall Inc.®