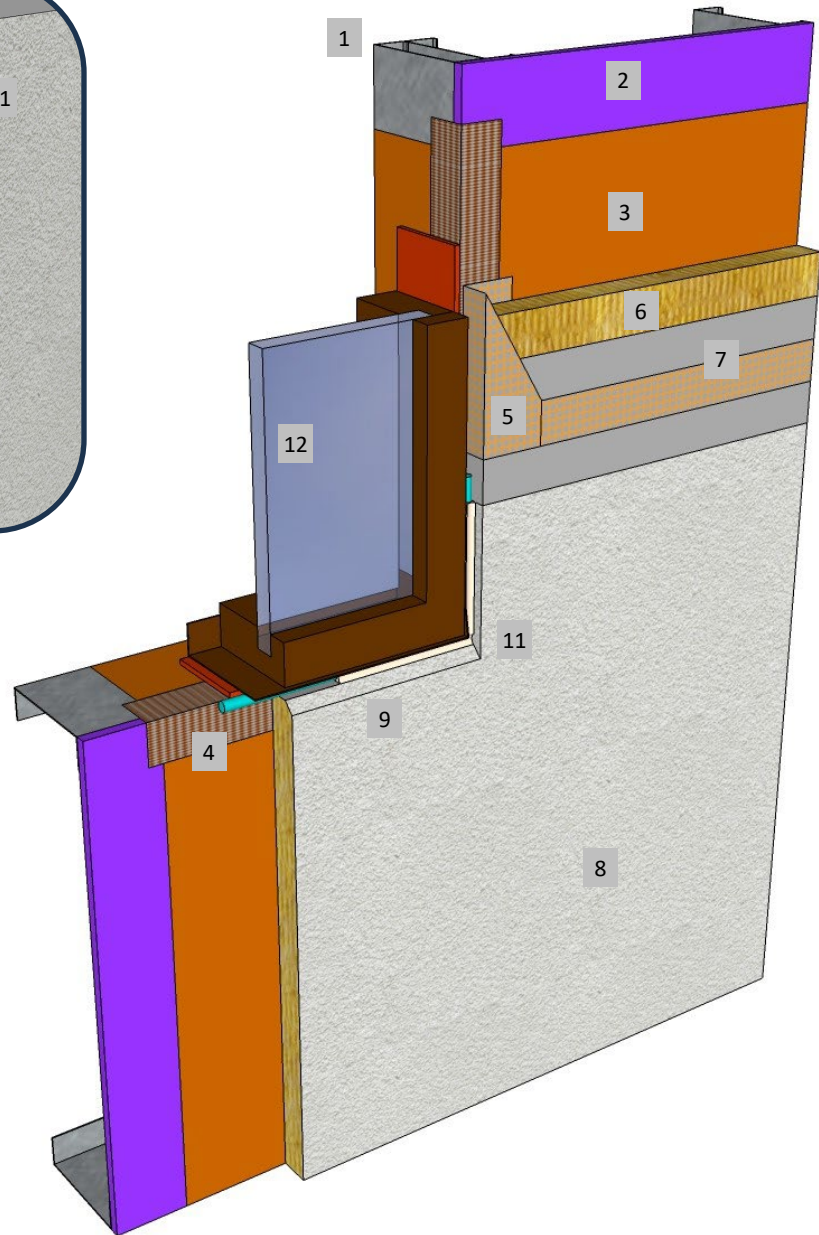
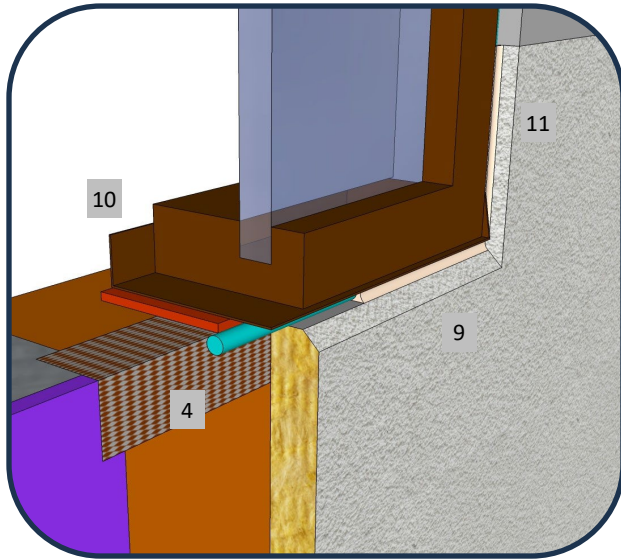




Master Wall Inc.
Building a Culture of Excellence

**ROLLERSHIELD DRAINAGE
CIFS® TYPE MW**

SYSTEM DETAIL



1. FRAMING
2. APPROVED SUBSTRATE
3. ROLLERSHIELD AIR/WATER BARRIER
4. SUPERIORSHIELD FLASHING TAPE INTO OPENING
5. BACKWRAPPED CIFS® SHOWN, EIFS PLASTIC ACCESSORIES ARE OPTIONAL.
6. MINERAL WOOL INSULATION BOARD ADHERED WITH CHANNELED ADHESIVE
7. MASTER WALL BASE COAT AND MESH
8. SUPERIOR FINISH
9. SLOPE SILLS, 1:2 RECOMMENDED
10. SILL PAN (IF REQUIRED) NOTE: IF SILL PAN DESIGN EXTENDS OVER EIFS IT SHOULD RUN DOWN FACE 2" (51 MM) MIN. WITH LOWER EDGE SEALED
11. 1/2" (12.7 MM) MIN. JAMB SEALANT JOINT & BACKER ROD
12. STOREFRONT WINDOW

RDCIFSMW-13 TYPICAL STOREFRONT WINDOW SILL

M Master Wall Inc.
Building a Culture of Excellence

PO Box 397 · Fortson · GA · 31808 · 800-755-0825 · masterwall.com

These drawings relay the conceptual conditions of Master Wall® Systems and are not the construction drawings. Ultimately the design and detailing of an entire wall system is the responsibility of a professional. These details will guide the design professional in the use of Master Wall® Products. Master Wall disclaims design, warranty or construction intent or responsibility. **Bold or Brand Name = Master Wall® Product.** ©2025 Master Wall Inc.®