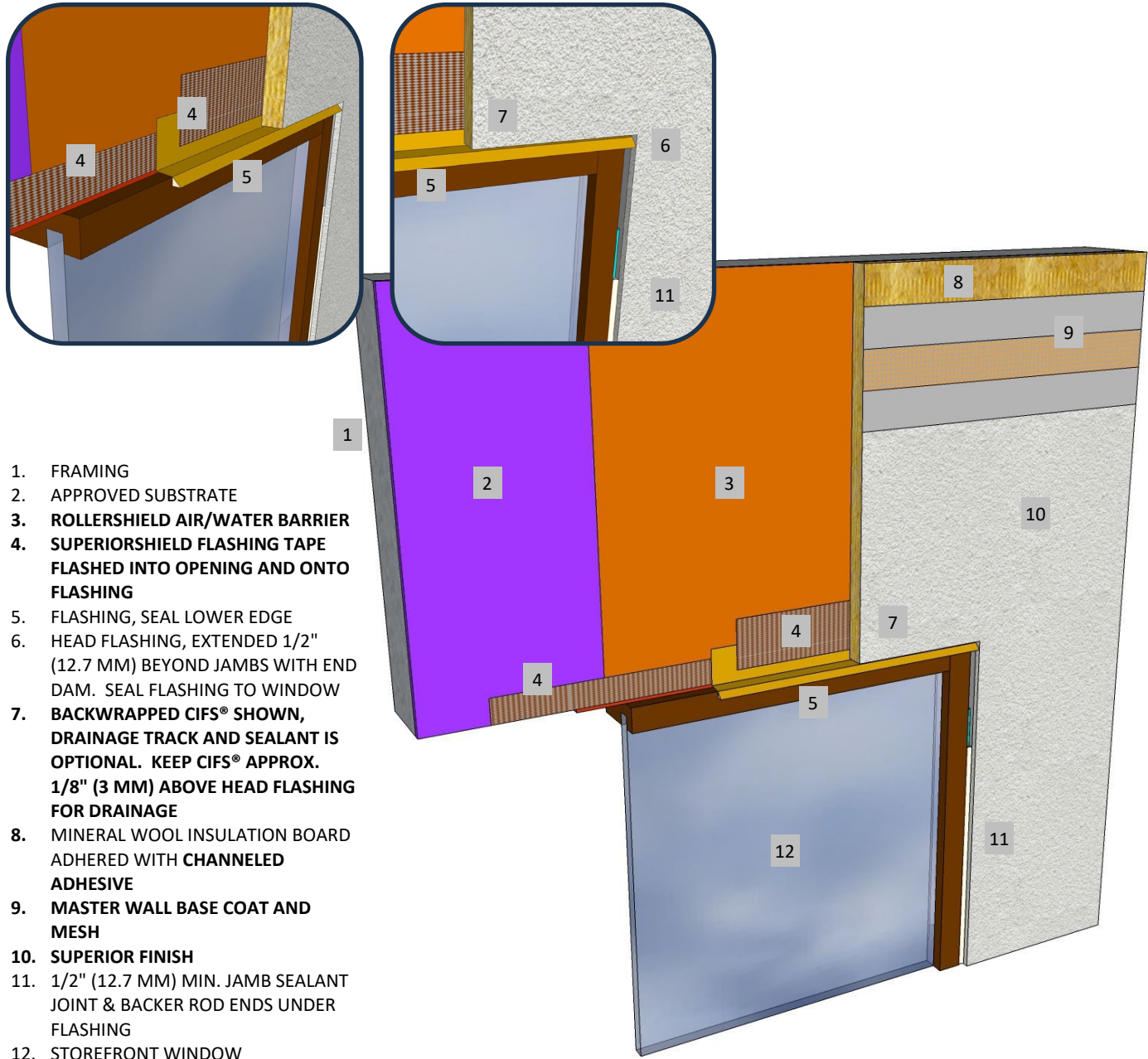




Master Wall Inc.
Building a Culture of Excellence

**ROLLERSHIELD DRAINAGE
CIFS® TYPE MW**

SYSTEM DETAIL



1. FRAMING
2. APPROVED SUBSTRATE
3. **ROLLERSHIELD AIR/WATER BARRIER**
4. **SUPERIORSHIELD FLASHING TAPE
FLASHED INTO OPENING AND ONTO
FLASHING**
5. FLASHING, SEAL LOWER EDGE
6. HEAD FLASHING, EXTENDED 1/2"
(12.7 MM) BEYOND JAMBS WITH END
DAM. SEAL FLASHING TO WINDOW
7. **BACKWRAPPED CIFS® SHOWN,
DRAINAGE TRACK AND SEALANT IS
OPTIONAL. KEEP CIFS® APPROX.
1/8" (3 MM) ABOVE HEAD FLASHING
FOR DRAINAGE**
8. MINERAL WOOL INSULATION BOARD
ADHERED WITH **CHANNELED
ADHESIVE**
9. **MASTER WALL BASE COAT AND
MESH**
10. **SUPERIOR FINISH**
11. 1/2" (12.7 MM) MIN. JAMB SEALANT
JOINT & BACKER ROD ENDS UNDER
FLASHING
12. STOREFRONT WINDOW

RDCIFSMW-11 TYPICAL STOREFRONT WINDOW HEAD

M Master Wall Inc.
Building a Culture of Excellence

PO Box 397 · Fortson · GA · 31808 · 800-755-0825 · masterwall.com

These drawings relay the conceptual conditions of Master Wall® Systems and are not the construction drawings. Ultimately the design and detailing of an entire wall system is the responsibility of a professional. These details will guide the design professional in the use of Master Wall® Products. Master Wall disclaims design, warranty or construction intent or responsibility. **Bold or Brand Name = Master Wall® Product.** ©2025 Master Wall Inc.®