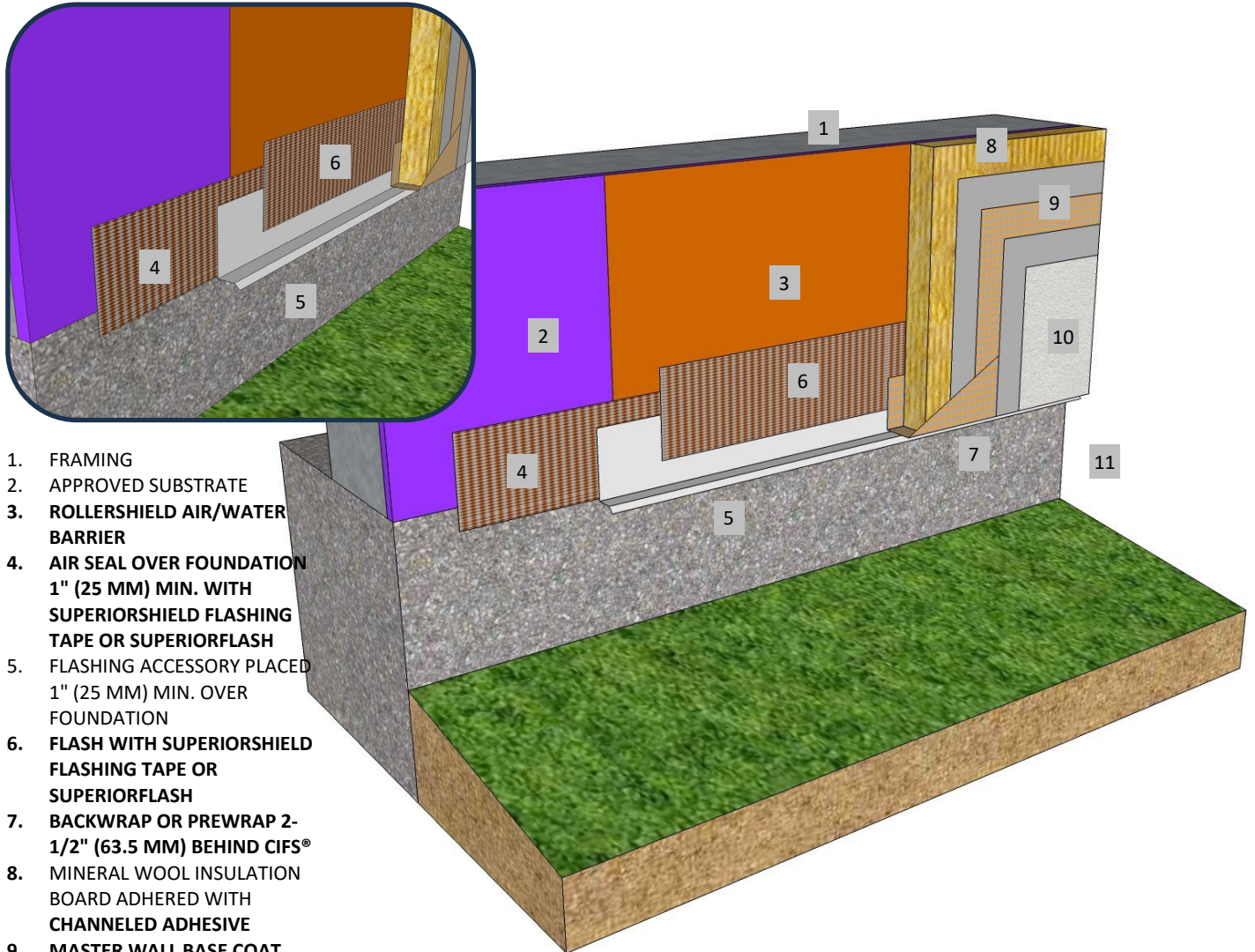




**Master Wall Inc.**  
Building a Culture of Excellence

**ROLLERSHIELD DRAINAGE  
CIFS® TYPE MW**

**SYSTEM DETAIL**



1. FRAMING
2. APPROVED SUBSTRATE
3. ROLLERSHIELD AIR/WATER BARRIER
4. AIR SEAL OVER FOUNDATION 1" (25 MM) MIN. WITH SUPERIORSHIELD FLASHING TAPE OR SUPERIORFLASH
5. FLASHING ACCESSORY PLACED 1" (25 MM) MIN. OVER FOUNDATION
6. FLASH WITH SUPERIORSHIELD FLASHING TAPE OR SUPERIORFLASH
7. BACKWRAP OR PREWRAP 2-1/2" (63.5 MM) BEHIND CIFS®
8. MINERAL WOOL INSULATION BOARD ADHERED WITH CHanneled ADHESIVE
9. MASTER WALL BASE COAT AND MESH
10. SUPERIOR FINISH
11. KEEP CIFS® 6" (152 MM) MIN. ABOVE GRADE

**RDCIFSMW-06 FLASHING ANGLE TERMINATION**

**M Master Wall Inc.**  
Building a Culture of Excellence

PO Box 397 · Fortson · GA · 31808 · 800-755-0825 · masterwall.com

These drawings relay the conceptual conditions of Master Wall® Systems and are not the construction drawings. Ultimately the design and detailing of an entire wall system is the responsibility of a professional. These details will guide the design professional in the use of Master Wall® Products. Master Wall disclaims design, warranty or construction intent or responsibility. **Bold or Brand Name = Master Wall® Product.** ©2025 Master Wall Inc.®