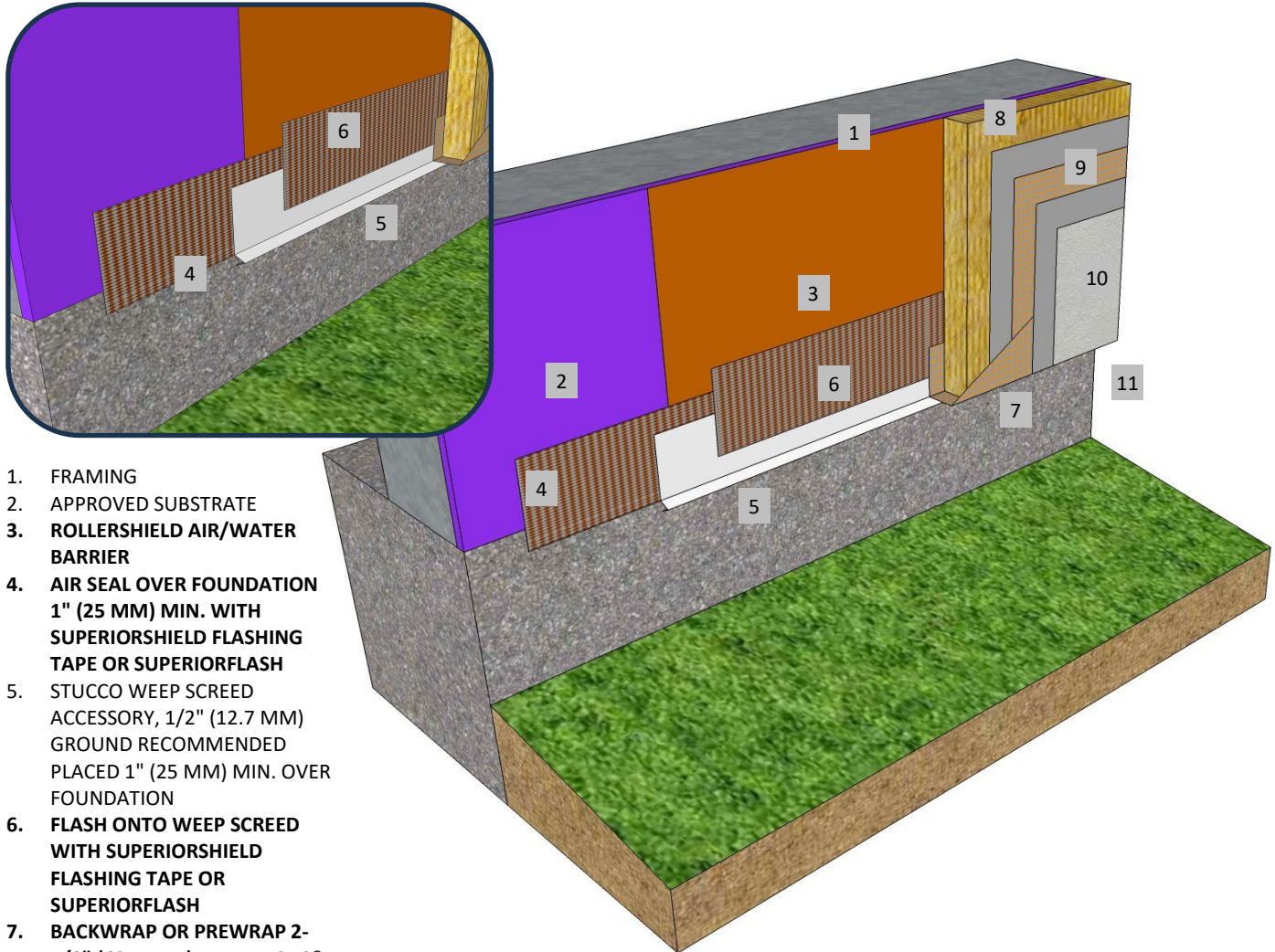




Master Wall Inc.
Building a Culture of Excellence

**ROLLERSHIELD DRAINAGE
CIFS® TYPE MW**

SYSTEM DETAIL



1. FRAMING
2. APPROVED SUBSTRATE
3. ROLLERSHIELD AIR/WATER BARRIER
4. AIR SEAL OVER FOUNDATION 1" (25 MM) MIN. WITH SUPERIORSHIELD FLASHING TAPE OR SUPERIORFLASH
5. STUCCO WEEP SCREED ACCESSORY, 1/2" (12.7 MM) GROUND RECOMMENDED PLACED 1" (25 MM) MIN. OVER FOUNDATION
6. FLASH ONTO WEEP SCREED WITH SUPERIORSHIELD FLASHING TAPE OR SUPERIORFLASH
7. BACKWRAP OR PREWRAP 2-1/2" (63.5 MM) BEHIND CIFS®
8. MINERAL WOOL INSULATION BOARD ADHERED WITH CHANNELED ADHESIVE
9. MASTER WALL BASE COAT AND MESH
10. SUPERIOR FINISH
11. KEEP CIFS® 6" (152 MM) MIN. ABOVE GRADE

RDCIFSMW-05 STUCCO WEEP SCREED TERMINATION

M Master Wall Inc.
Building a Culture of Excellence

PO Box 397 · Fortson · GA · 31808 · 800-755-0825 · masterwall.com

These drawings relay the conceptual conditions of Master Wall® Systems and are not the construction drawings. Ultimately the design and detailing of an entire wall system is the responsibility of a professional. These details will guide the design professional in the use of Master Wall® Products. Master Wall disclaims design, warranty or construction intent or responsibility. **Bold or Brand Name = Master Wall® Product.** ©2025 Master Wall Inc.®