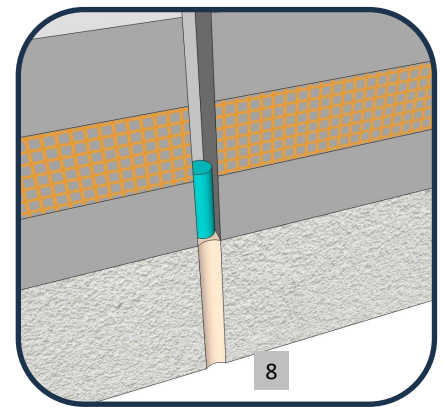
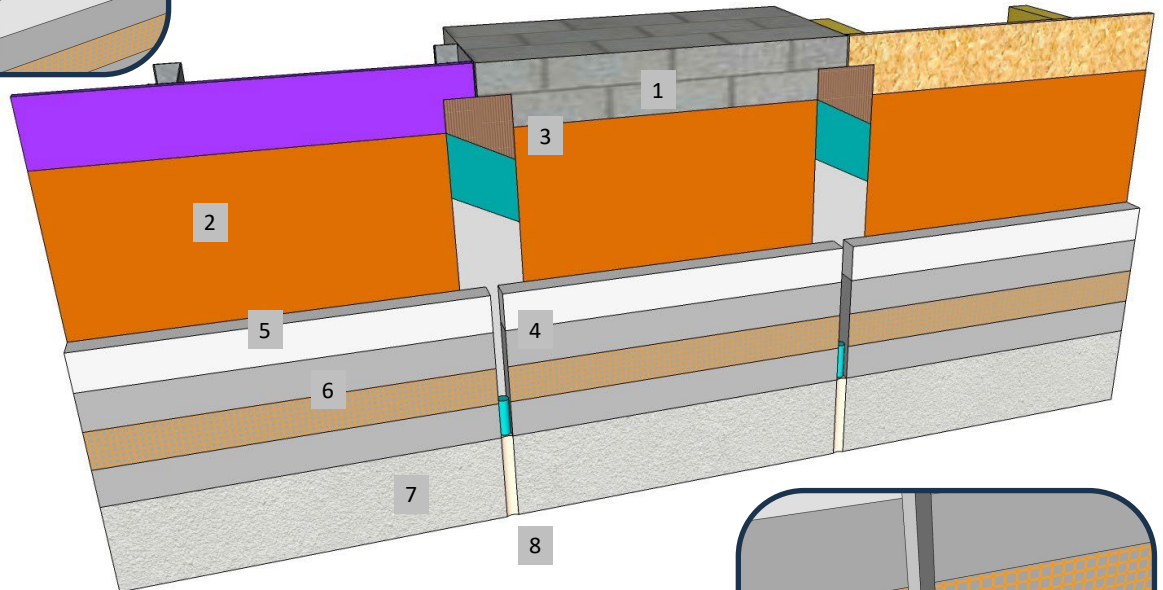
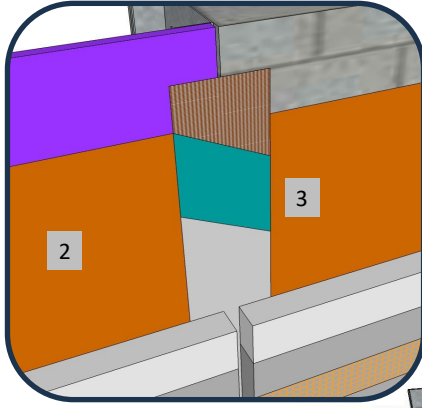




**Master Wall Inc.**  
Building a Culture of Excellence

**ROLLERSHIELD  
DRAINAGE CIFS®**

**SYSTEM DETAIL**



1. FRAMING & APPROVED SUBSTRATE
2. ROLLERSHIELD AIR/WATER BARRIER
3. MATERIAL BRIDGE: SUPERIORSHIELD FLASHING TAPE/SUPERIORFLASH WITH BACKING AS NEEDED OR WEATHERSTOP TAPE
4. BACKWRAPPED CIFS® SHOWN, EIFS PLASTIC ACCESSORIES ARE OPTIONAL
5. MASTER WALL INSULATION BOARD ADHERED WITH CHANNELED ADHESIVE
6. MASTER WALL BASE COAT AND MESH
7. SUPERIOR FINISH
8. SEALANT JOINT SIZED FOR ANTICIPATED MOVEMENT, 3/4" (19 MM) MIN.

***RDCIFS-32 DISSIMILAR SUBSTRATES/SUBSTRATE CHANGE***

**M Master Wall Inc.**  
Building a Culture of Excellence

PO Box 397 · Fortson · GA · 31808 · 800-755-0825 · masterwall.com

These drawings relay the conceptual conditions of Master Wall® Systems and are not the construction drawings. Ultimately the design and detailing of an entire wall system is the responsibility of a professional. These details will guide the design professional in the use of Master Wall® Products. Master Wall disclaims design, warranty or construction intent or responsibility. **Bold or Brand Name = Master Wall® Product.** ©2024 Master Wall Inc.®