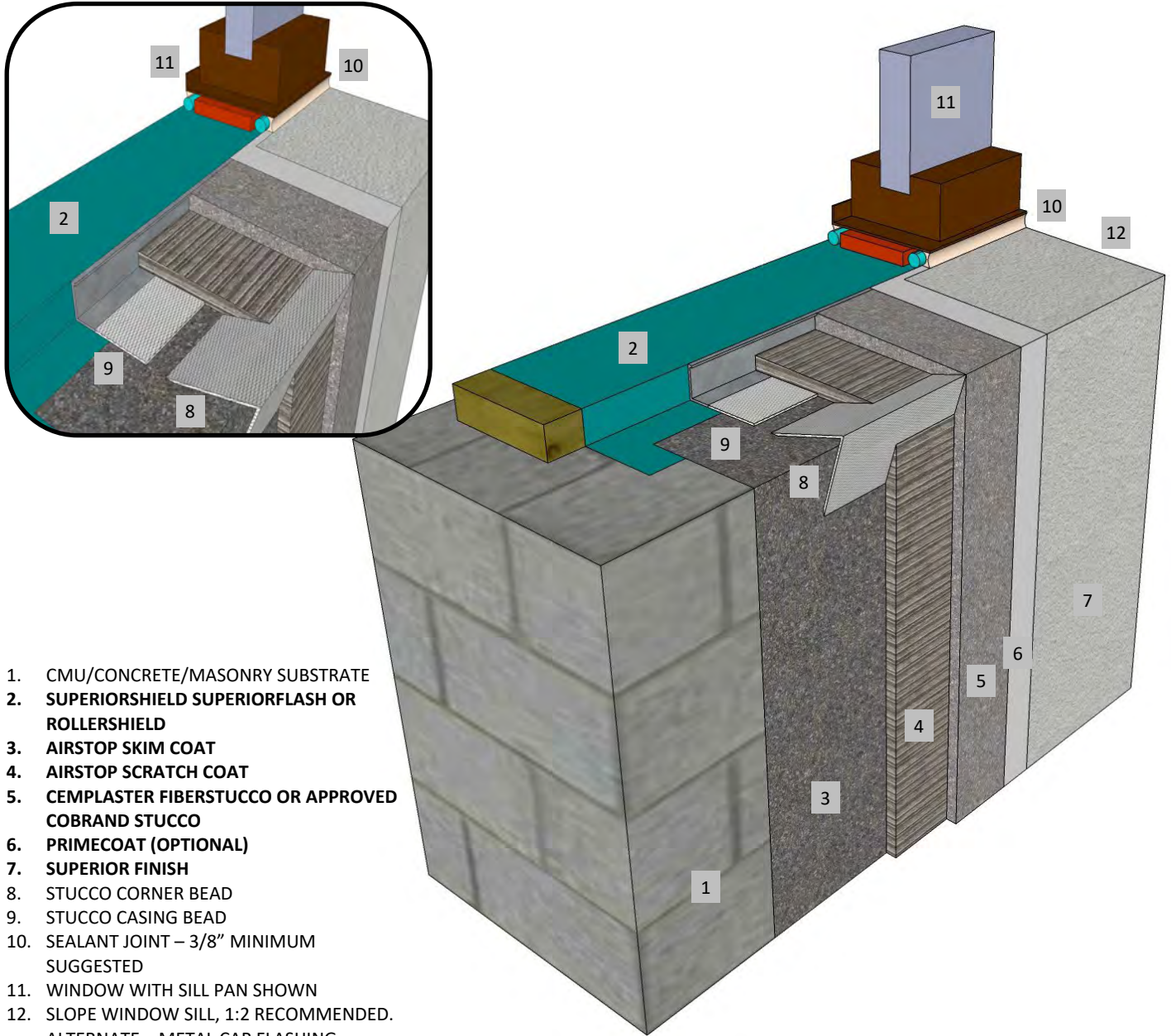




Master Wall Inc.
Building a Culture of Excellence

AIRSTOP FOR CMU

SYSTEM DETAIL



1. CMU/CONCRETE/MASONRY SUBSTRATE
2. SUPERIORSHIELD SUPERIORFLASH OR ROLLERSHIELD
3. AIRSTOP SKIM COAT
4. AIRSTOP SCRATCH COAT
5. CEMPLASTER FIBERSTUCCO OR APPROVED COBRAND STUCCO
6. PRIMECOAT (OPTIONAL)
7. SUPERIOR FINISH
8. STUCCO CORNER BEAD
9. STUCCO CASING BEAD
10. SEALANT JOINT – 3/8" MINIMUM SUGGESTED
11. WINDOW WITH SILL PAN SHOWN
12. SLOPE WINDOW SILL, 1:2 RECOMMENDED. ALTERNATE – METAL CAP FLASHING

MWAS-09 RECESSED WINDOW SILL

M Master Wall Inc.
Building a Culture of Excellence

PO Box 397 · Fortson · GA · 31808 · 800-755-0825 · masterwall.com

These drawings relay the conceptual conditions of Master Wall® Systems and are not the construction drawings. Ultimately the design and detailing of an entire wall system is the responsibility of a professional. These details will guide the design professional in the use of Master Wall® Products. Master Wall disclaims design, warranty or construction intent or responsibility. Bold or Brand Name = Master Wall® Product. ©2025 Master Wall Inc.®