

**We finish-
strong.**



Why EIFS?

Your home is one of your most precious investments. Exterior building systems are no longer simply about aesthetics. The cladding you choose for your home plays an integral role in the efficiency, durability, affordability, and long-term stability of your investment.

masterwall.com

With Master Wall® EIFS, homeowners can trust that their home is covered by a manufacturer that offers quality products and services that exceed industry standards and expectations.

Master Wall Inc.
6975 Flat Rock Road
Midland, GA 31820

Phone: 800-755-0825
Fax: 706-569-6704
E-mail: tech@masterwall.com

No matter the look you desire for your home, Master Wall® Exterior Insulation and Finish Systems (EIFS) will allow you to use your imagination to create a home that is perfect for you and your family.



We finish strong.

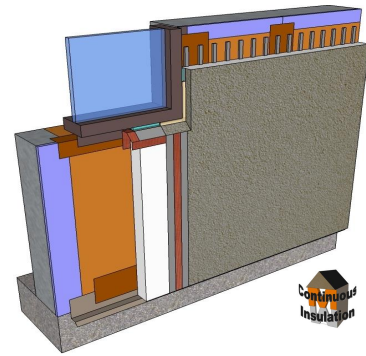
We finish strong-

Continuous Insulation (CI) is part of the system, not an upgrade or extra cost.

CI is a vital component of the building envelope. CI stops thermal bridging found in cavity insulation.

CI reduces heat loss and increases the R-value of the wall system. Standard EPS Foam offer an R-value of 4 per inch of thickness.

In EIFS, CI is combined with a moisture barrier and drainage plain which better protects against water intrusion.



The weather and moisture barrier is an integral part of the system, and it is included in the Master Wall® Warranty.

Rollershield LAB is applied as a continuous weather barrier. Joints and openings are treated and sealed, and the entire substrate surface receives a monolithic coating. Rollershield can be used behind multiple claddings including brick, stone, and siding.

There are no breaks, taping, staples, or fasteners that are required with building paper barriers.

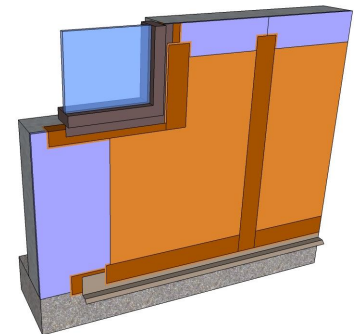
Unlike with paper barriers, the contractor installing the EIFS cladding is also responsible for the weather barrier. One warranty. One contractor. One manufacturer.



Master Wall® EIFS have been put through rigorous testing to prove durability and long-term performance quality.

Master Wall® EIFS successfully passed multiple fire tests for both commercial and residential construction, including NFPA-285, which is the industry's highest standard fire testing.

All component of the Master Wall® EIFS must meet all ASTM standards and building codes. Owners can trust that our systems have passed the highest threshold for quality and performance.



With EIFS, the design possibilities are nearly endless. Unlimited colors, multiple textures, custom shapes, and specialty finishes offer the most versatility of any cladding system.

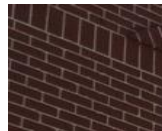
Textures can range from coarse to sand to smooth. Master Wall® offers multiple textures to satisfy the most demanding owners.

Color options are virtually infinite. From light to dark, you pick your color, and we can make it happen.

Specialty products can replicate the look of Brick, Granite, Limestone, Venetian Plaster, and even Metallic panels.



Granite



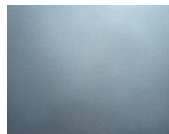
Custom Brick



Limestone



Venetian Plaster



Metallic



We finish strong.